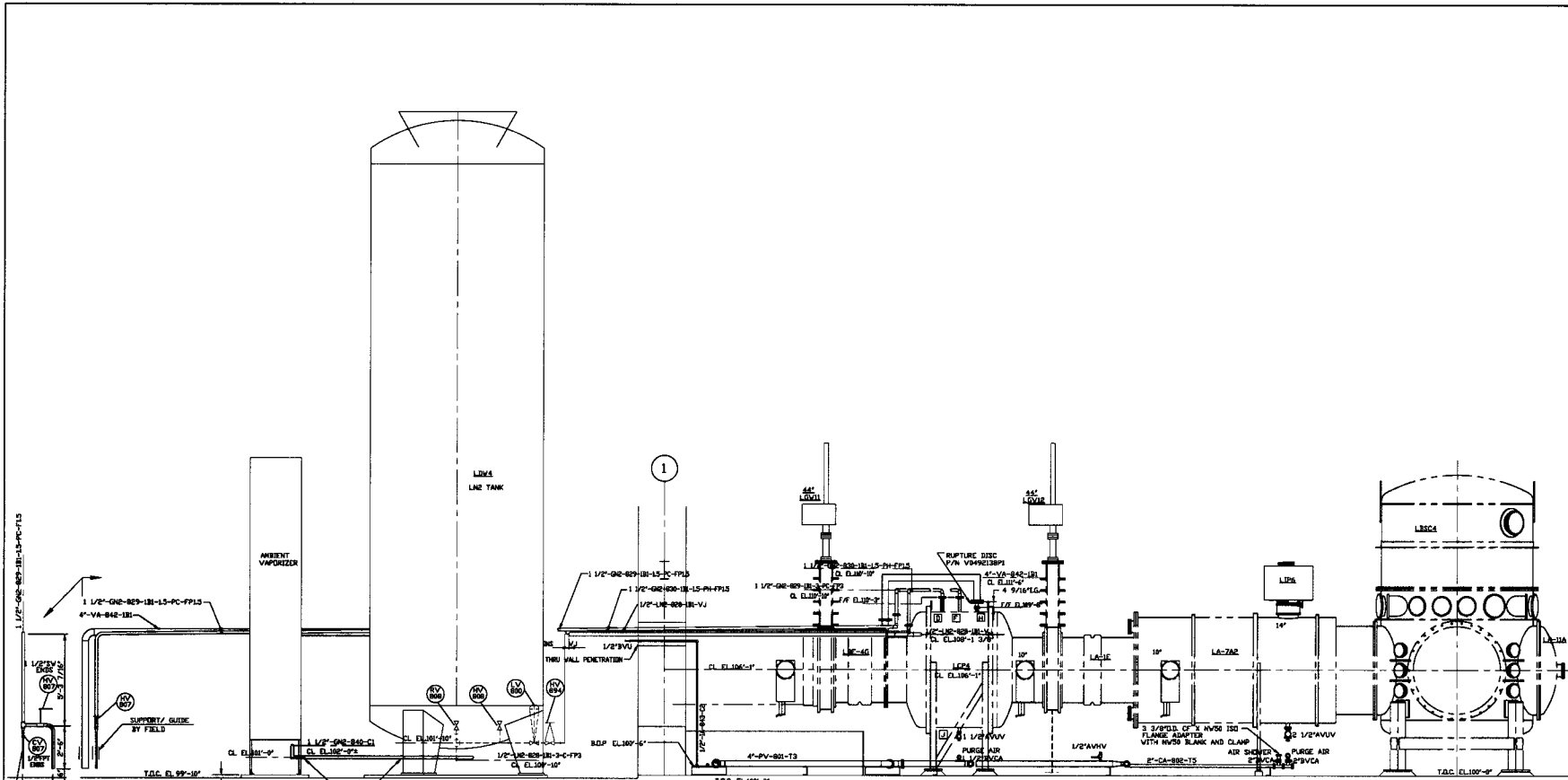


ELEVATION VIEWING - NOT FOR COMMERCIAL USE



ELEVATION  
DWG. NO V049-5-0043, SHT.2

DWG. NO.	DESCRIPTION	DWG. NO.	DESCRIPTION
V049-0-025	P & ID RIGHT END STATION		
V049-0-026	P & ID BOK CRYOLUMP		
V049-0-043	PIPING ARRANGEMENT PLAN RIGHT END STATION		
V049-0-048	EQUIPMENT ARRANGEMENT RIGHT END STATION		
118118	LIGO VACUUM EQUIPMENT END STATION		

UNLESS OTHERWISE SPECIFIED	UNLESS OTHERWISE SPECIFIED	UNLESS OTHERWISE SPECIFIED	UNLESS OTHERWISE SPECIFIED	UNLESS OTHERWISE SPECIFIED	UNLESS OTHERWISE SPECIFIED	UNLESS OTHERWISE SPECIFIED	UNLESS OTHERWISE SPECIFIED	UNLESS OTHERWISE SPECIFIED	UNLESS OTHERWISE SPECIFIED
1	ISSUED FOR CONSTRUCTION	SH	DMV	RDC	REC	REC	REC	REC	REC
2	ISSUED FOR P&R								
3	AS BUILT								
4	ISSUED FOR CONSTRUCTION								
5	ISSUED FOR P&R								
6	AS BUILT								
7	ISSUED FOR CONSTRUCTION								
8	ISSUED FOR P&R								
9	AS BUILT								
10	ISSUED FOR CONSTRUCTION								
11	ISSUED FOR P&R								
12	AS BUILT								
13	ISSUED FOR CONSTRUCTION								
14	ISSUED FOR P&R								
15	AS BUILT								
16	ISSUED FOR CONSTRUCTION								
17	ISSUED FOR P&R								
18	AS BUILT								
19	ISSUED FOR CONSTRUCTION								
20	ISSUED FOR P&R								
21	AS BUILT								
22	ISSUED FOR CONSTRUCTION								
23	ISSUED FOR P&R								
24	AS BUILT								
25	ISSUED FOR CONSTRUCTION								
26	ISSUED FOR P&R								
27	AS BUILT								
28	ISSUED FOR CONSTRUCTION								
29	ISSUED FOR P&R								
30	AS BUILT								
31	ISSUED FOR CONSTRUCTION								
32	ISSUED FOR P&R								
33	AS BUILT								
34	ISSUED FOR CONSTRUCTION								
35	ISSUED FOR P&R								
36	AS BUILT								
37	ISSUED FOR CONSTRUCTION								
38	ISSUED FOR P&R								
39	AS BUILT								
40	ISSUED FOR CONSTRUCTION								
41	ISSUED FOR P&R								
42	AS BUILT								
43	ISSUED FOR CONSTRUCTION								
44	ISSUED FOR P&R								
45	AS BUILT								
46	ISSUED FOR CONSTRUCTION								
47	ISSUED FOR P&R								
48	AS BUILT								
49	ISSUED FOR CONSTRUCTION								
50	ISSUED FOR P&R								
51	AS BUILT								
52	ISSUED FOR CONSTRUCTION								
53	ISSUED FOR P&R								
54	AS BUILT								
55	ISSUED FOR CONSTRUCTION								
56	ISSUED FOR P&R								
57	AS BUILT								
58	ISSUED FOR CONSTRUCTION								
59	ISSUED FOR P&R								
60	AS BUILT								
61	ISSUED FOR CONSTRUCTION								
62	ISSUED FOR P&R								
63	AS BUILT								
64	ISSUED FOR CONSTRUCTION								
65	ISSUED FOR P&R								
66	AS BUILT								
67	ISSUED FOR CONSTRUCTION								
68	ISSUED FOR P&R								
69	AS BUILT								
70	ISSUED FOR CONSTRUCTION								
71	ISSUED FOR P&R								
72	AS BUILT								
73	ISSUED FOR CONSTRUCTION								
74	ISSUED FOR P&R								
75	AS BUILT								
76	ISSUED FOR CONSTRUCTION								
77	ISSUED FOR P&R								
78	AS BUILT								
79	ISSUED FOR CONSTRUCTION								
80	ISSUED FOR P&R								
81	AS BUILT								
82	ISSUED FOR CONSTRUCTION								
83	ISSUED FOR P&R								
84	AS BUILT								
85	ISSUED FOR CONSTRUCTION								
86	ISSUED FOR P&R								
87	AS BUILT								
88	ISSUED FOR CONSTRUCTION								
89	ISSUED FOR P&R								
90	AS BUILT								
91	ISSUED FOR CONSTRUCTION								
92	ISSUED FOR P&R								
93	AS BUILT								
94	ISSUED FOR CONSTRUCTION								
95	ISSUED FOR P&R								
96	AS BUILT								
97	ISSUED FOR CONSTRUCTION								
98	ISSUED FOR P&R								
99	AS BUILT								
100	ISSUED FOR CONSTRUCTION								

PROCESS SYSTEMS INTERNATIONAL, INC.  
30 WINDUP DR. METTERVILLE, MISSOURI 63090 USA

PIPING ARRANGEMENT, ELEVATION  
RIGHT END STATION  
LOUISIANA SITE  
LIGO VACUUM EQUIPMENT

DWG. NO. V049-5-044  
REV. 2

DATE: 05/22/98  
BY: 11297  
CHKD: 11297  
DATE: 05/22/98  
BY: 11297

SCALE: 1/8"=1'-0"

SHEET 1 OF 1