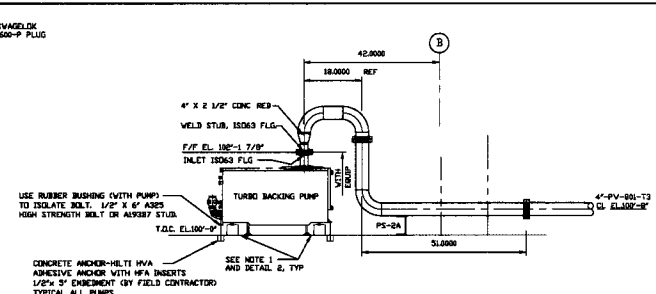
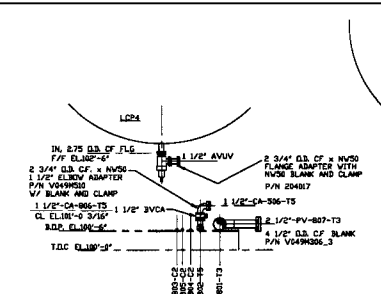


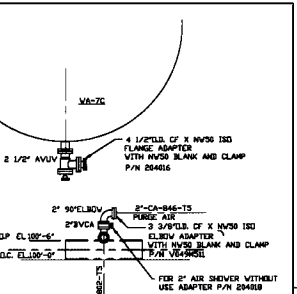
SECTION F  
SCALE: 3/8"=1'-0" V049-5-043, SHT 2



SECTION C  
SCALE: 3/4"=1'-0" V049-5-043, SHT 1

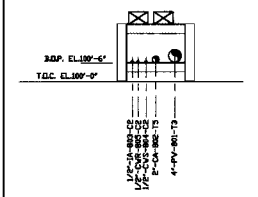


SECTION D  
SCALE: 3/4"=1'-0" V049-5-043, SHT 1

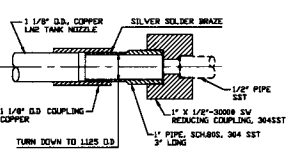


SECTION E  
SCALE: 3/4"=1'-0" V049-5-043, SHT 1

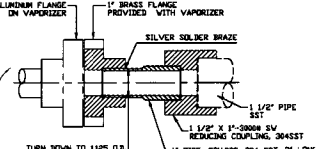
NOTES  
1) ADJUST PUMP CART LEVELING LEGS TO RAISE CART WHEELS OFF THE FLOOR. THE LEGS ARE TO REST ON THE 1/2\"/>



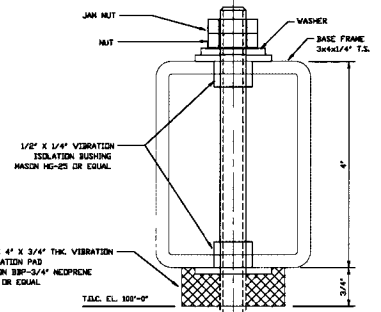
SECTION A  
SCALE: 3/4"=1'-0" V049-5-043, SHT 1



DETAIL 6  
SCALE: HALF

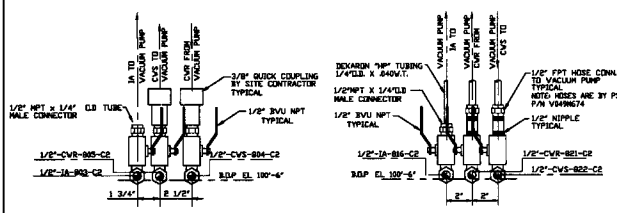


DETAIL 5  
SCALE: HALF V049-5-043, SHT 2



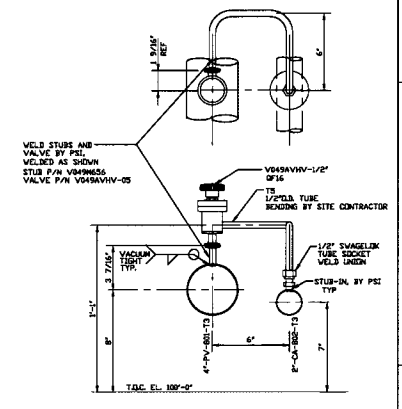
VIBRATION ISOLATION PAD  
TYPICAL

NOTE: THIS TYPE OF VIBRATION PAD ASSEMBLY IS TO BE USED UNDER AIR COMPRESSOR SKID AND ELECTRICAL CABINETS FOR 50 CFM AIR COMPRESSOR USE 4 BOLTED POINTS. USE 2\"/>



DETAIL 1  
SCALE: 3/4"=1'-0" V049-5-043, SHT 1

DETAIL 4  
SCALE: 3/4"=1'-0" V049-5-043, SHT 1



DETAIL 3  
SCALE: 3/4"=1'-0" V049-5-043, SHT 1

REV	DESCRIPTION	DATE	BY	CHKD	DRWN	DATE	DESK
1	ISSUED FOR CONSTRUCTION	05/22/98	LD				
2	AS BUILT	01/08/99	0443				

REV	DESCRIPTION	DATE	BY	CHKD	DRWN	DATE	DESK
1	ISSUED FOR CONSTRUCTION	05/22/98	LD				
2	AS BUILT	01/08/99	0443				

PROCESS SYSTEMS INTERNATIONAL INC. 20 WILLOW DR. WESTBOROUGH, MASSACHUSETTS 01581 USA	
PIPING ARRANGEMENT, SECTIONS RIGHT END STATION - AREA 800 LOUISIANA SITE LIGO VACUUM EQUIPMENT	
DWG FILE V0495045	SHEET NO. V049-5-045
SCALE: AS NOTED	REV. 2

EDUCATION VERSION - NOT FOR COMMERCIAL USE