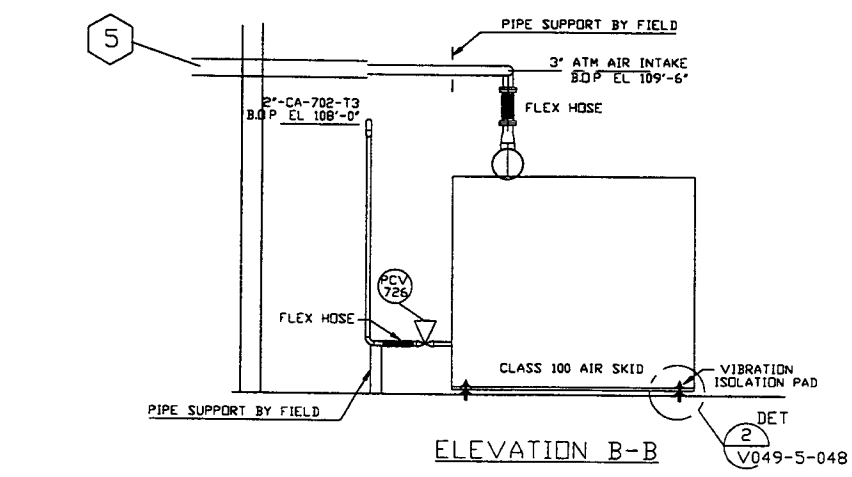
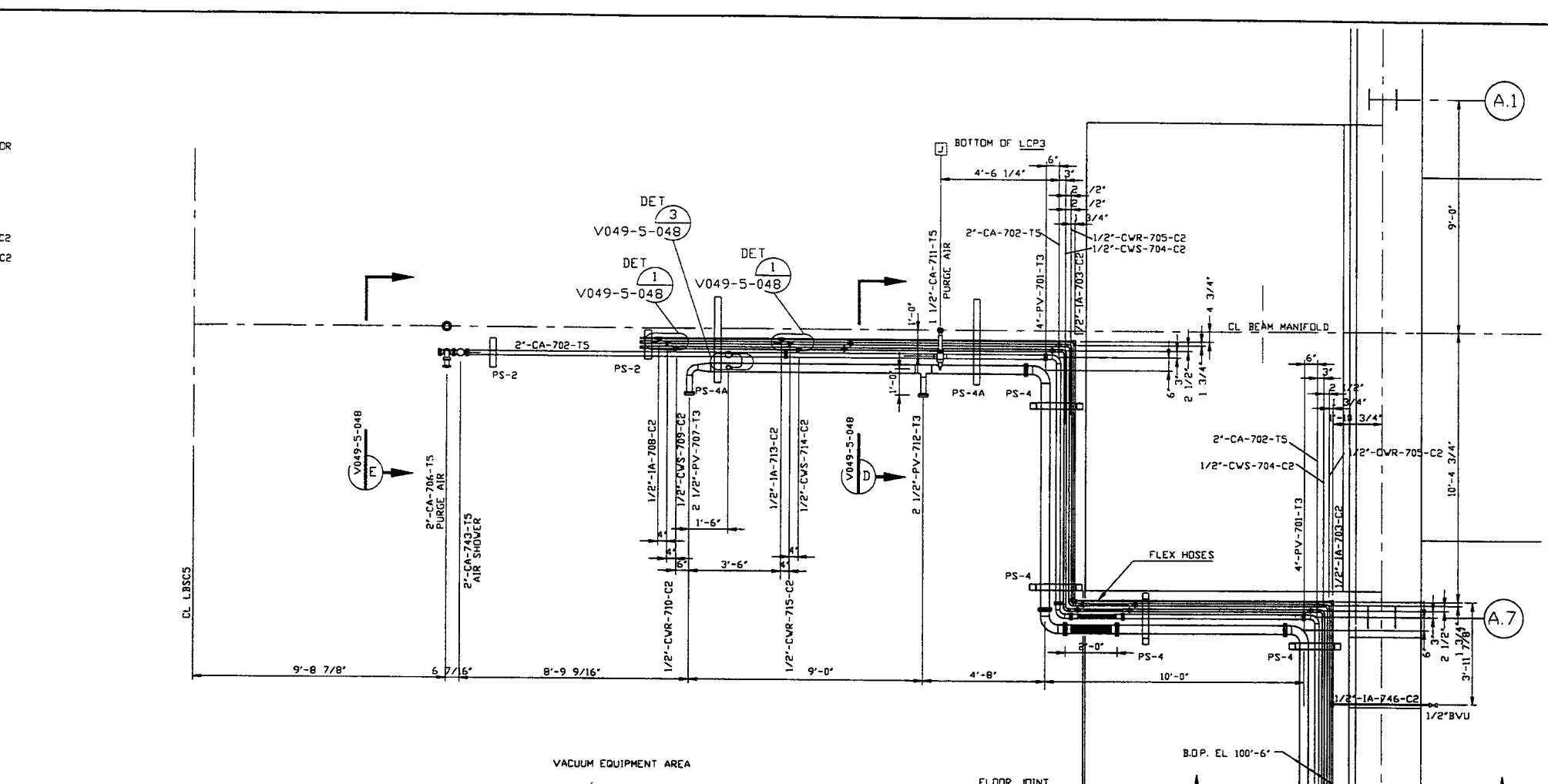


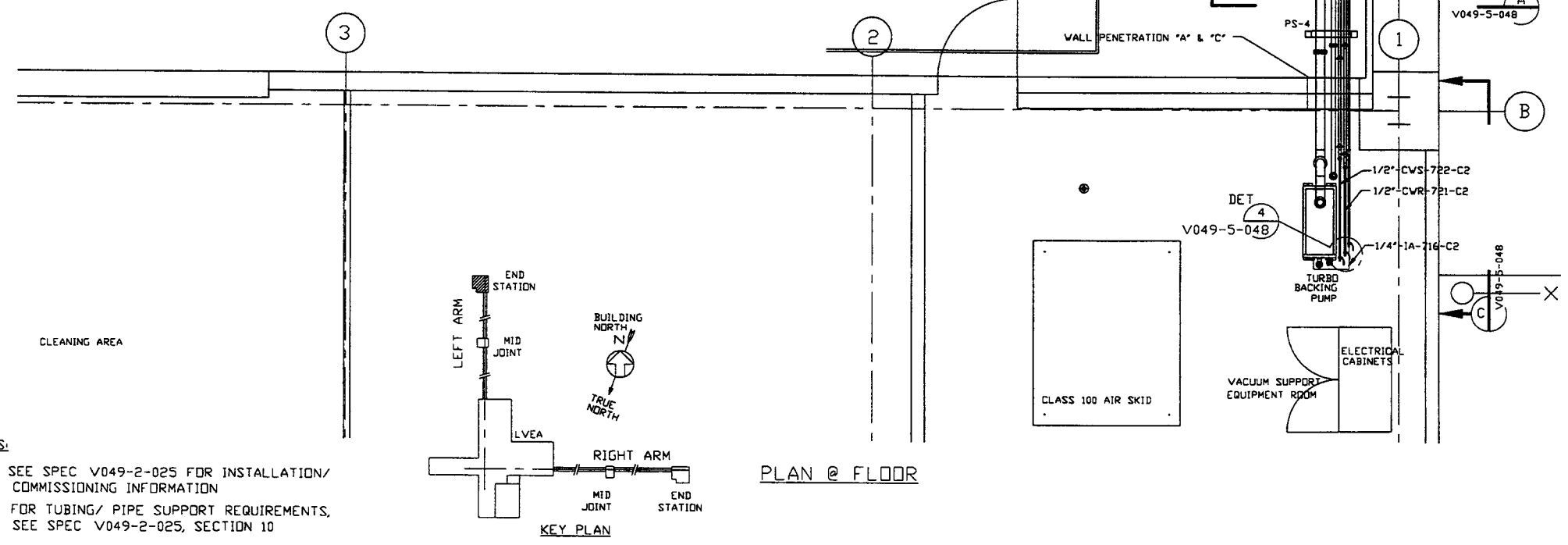
PLAN @ EL 110'-0"



ELEVATION B-B



VACUUM EQUIPMENT AREA



KEY PLAN

- NOTES:
- SEE SPEC V049-2-025 FOR INSTALLATION/ COMMISSIONING INFORMATION
 - FOR TUBING/ PIPE SUPPORT REQUIREMENTS, SEE SPEC V049-2-025, SECTION 10

DWG NO	DESCRIPTION	DWG NO	DESCRIPTION
V049-0-020	P & ID LEFT END STATION	110102	LIGO VACUUM EQUIPMENT END STATION
V049-0-006	P & ID 80K CRYOPUMP		
V049-5-009	EQUIPMENT ARRANGEMENT LEFT END STATION		
REFERENCE DRAWINGS			

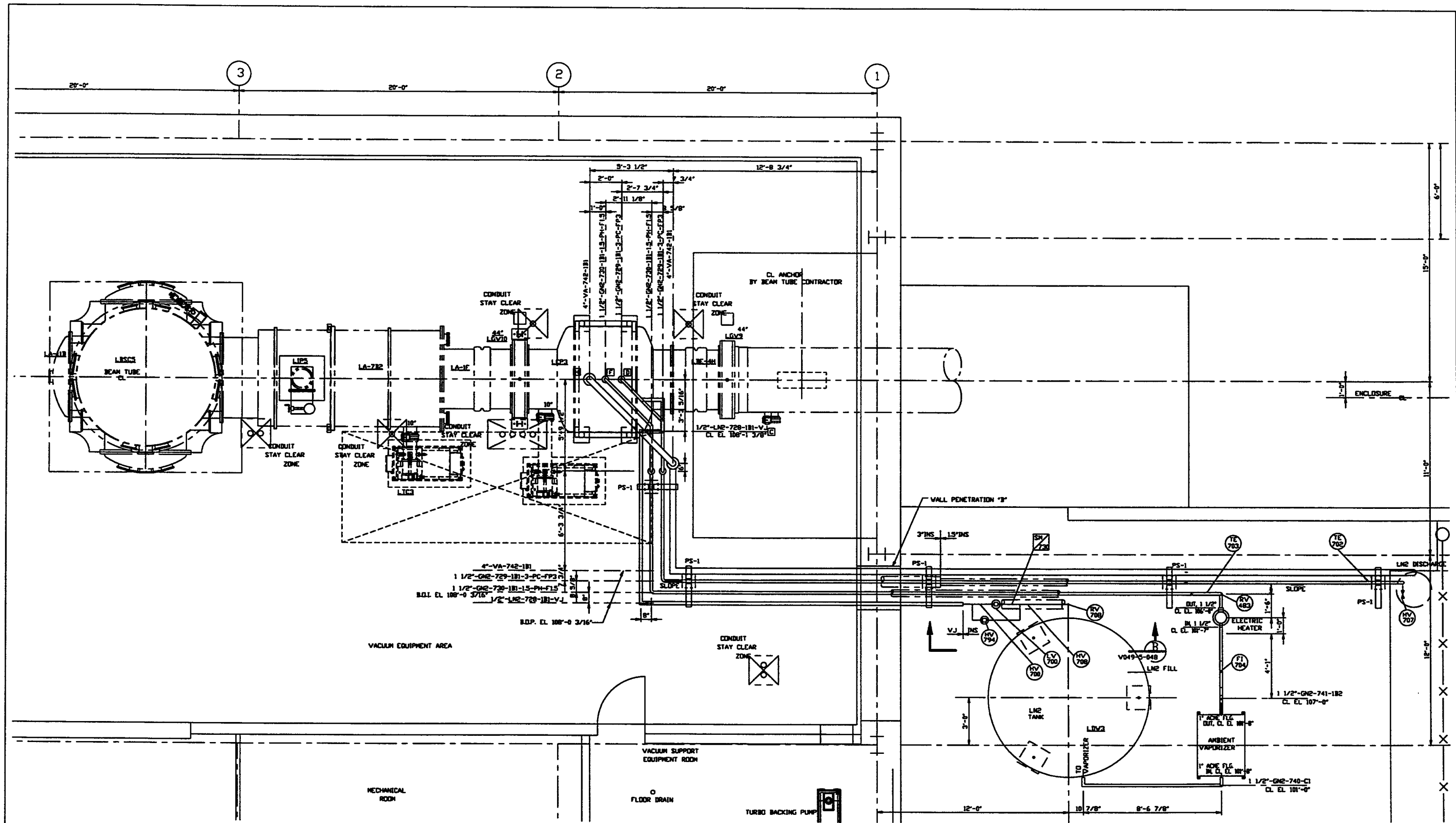
USED ON	REV	DESCRIPTION	CHKD	DRWN	DATE	DECD
DO NOT SCALE THIS DRAWING	0	ISSUED FOR FDR			113 97	D406
NEXT ASS'Y						

PROCESS SYSTEMS INTERNATIONAL INC.
20 WALKUP DR. WESTBOROUGH, MASSACHUSETTS 01581 USA

PIPING ARRANGEMENT PLAN
LEFT END STATION
LOUISIANA SITE
LIGO VACUUM EQUIPMENT

CAR FILE: V0495046/5046S1
SIZE: D
DWG NO: V049-5-046
REV: 0

SCALE: 3/8"=1'-0"
SHEET: 1 OF 2



PLAN @ EL. 112'-6"

PROCESS SYSTEMS INTERNATIONAL INC. 20 WILLOW DR. WESTBOROUGH, MASSACHUSETTS 01581 USA			
PIPING ARRANGEMENT, PLAN LEFT END STATION LOUISIANA SITE LIGO VACUUM EQUIPMENT			
CAD FILE	SIZE	ENG. NO.	REV.
V0495046/304652	D	V049-5-046	0
SCALE 3/8"=1'-0"		SHEET 2 OF 2	

05/15/1997 - 05/15/1997