

DWG. NO.	DESCRIPTION	DWG. NO.	DESCRIPTION
V049-0-020	P & ID LEFT END STATION		
V049-0-024	P & ID BOX CRITERIA		
V049-5-009	EQUIPMENT ARRANGEMENT LEFT END STATION		
V049-5-048	LIGO VACUUM EQUIPMENT END STATION		

NO	REV	DESCRIPTION	ISSUE DESCRIPTION
0		ISSUED FOR CONSTRUCTION	
1		ISSUED FOR FBR	

NO	REV	DESCRIPTION	ISSUE DESCRIPTION
0		ISSUED FOR CONSTRUCTION	
1		ISSUED FOR FBR	

PROCESS SYSTEMS INTERNATIONAL INC.
 20 WILSON ST. WESTBOROUGH, MASSACHUSETTS 01581

PIPING ARRANGEMENT, PLAN LEFT END STATION - 700 AREA LOUISIANA SITE LIGO VACUUM EQUIPMENT

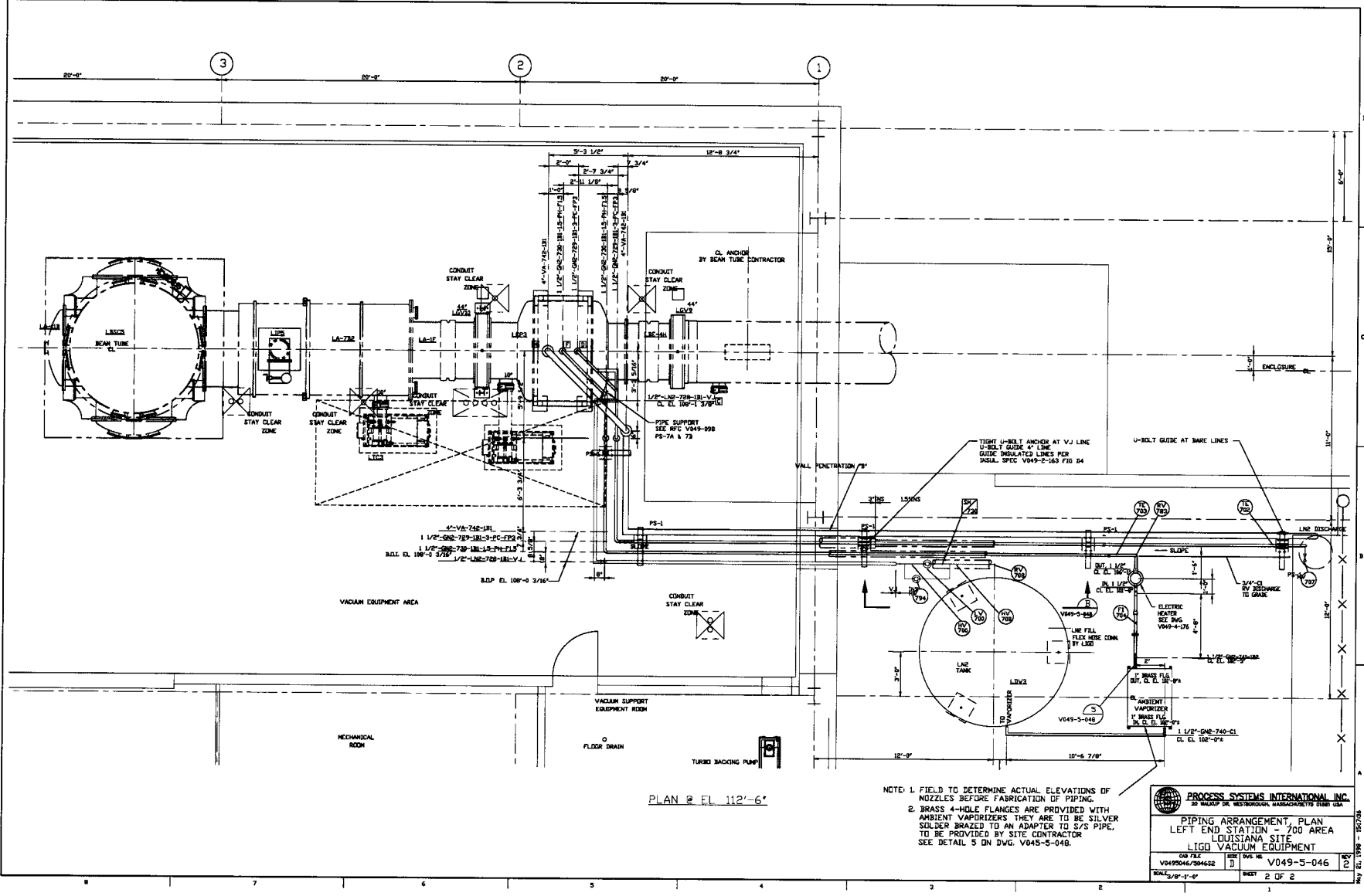
CW FILE: V0495046/504651
 DESIGNED BY: []
 CHECKED BY: []
 DATE: 05/22/99
 0877
 0466
 11297
 0466

SCALE: 3/8" = 1'-0"

SHEET 1 OF 2

LIGO-D970397-02-V

REPRODUCTION FOR COMMERCIAL USE



PLAN @ EL. 112'-6"

NOTE: 1. FIELD TO DETERMINE ACTUAL ELEVATIONS OF NOZZLES BEFORE FABRICATION OF PIPING.
 2. BRASS 4-HOLE FLANGES ARE PROVIDED WITH AMBIENT VAPORIZERS THEY ARE TO BE SILVER SOLDER BRAZED TO AN ADAPTER TO S/S PIPE, TO BE PROVIDED BY SITE CONTRACTOR SEE DETAIL 5 ON DWG. V045-5-04B.

PROCESS SYSTEMS INTERNATIONAL INC. 20 WOOD LAKE METROPLEX, WASHINGTON DC	
PIPING ARRANGEMENT, PLAN LEFT END STATION - 700 AREA LOUISIANA SITE LIGO VACUUM EQUIPMENT	
DWG FILE V0495046/204622	ISSUE NO. D V049-5-046
SCALE 1/8" = 1'-0"	SHEET 2 OF 2

EVALUATION VERSION - NOT FOR COMMERCIAL USE