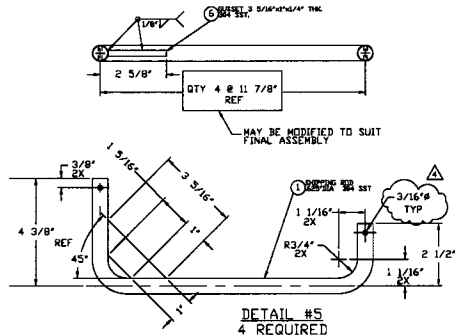
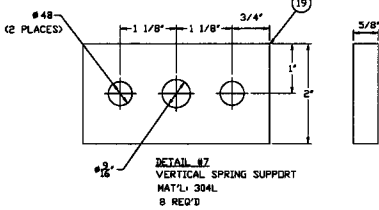


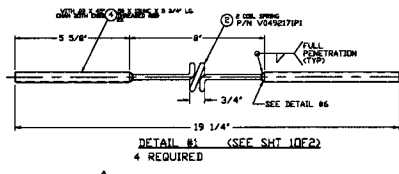
DETAIL #3  
4 REQUIRED



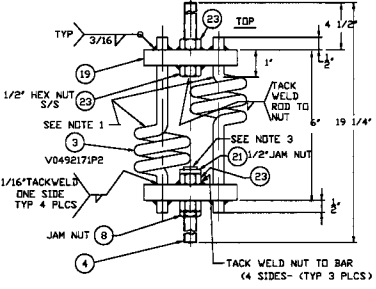
DETAIL #5  
4 REQUIRED



DETAIL #7  
VERTICAL SPRING SUPPORT  
MATERIAL: 304L  
8 REQUIRED

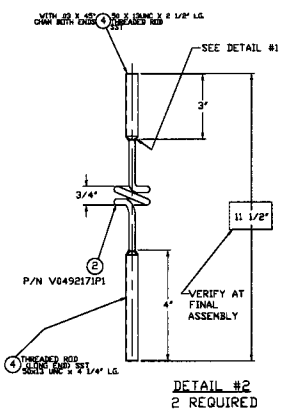


DETAIL #8 (SEE SHT 10E2)  
4 REQUIRED

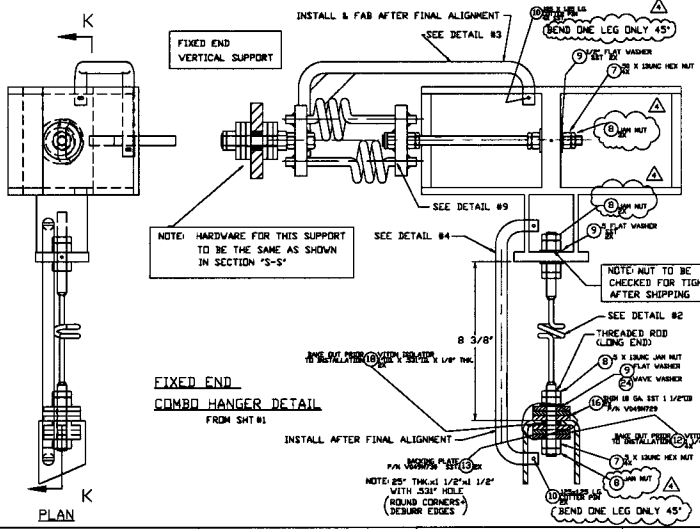


DETAIL #9

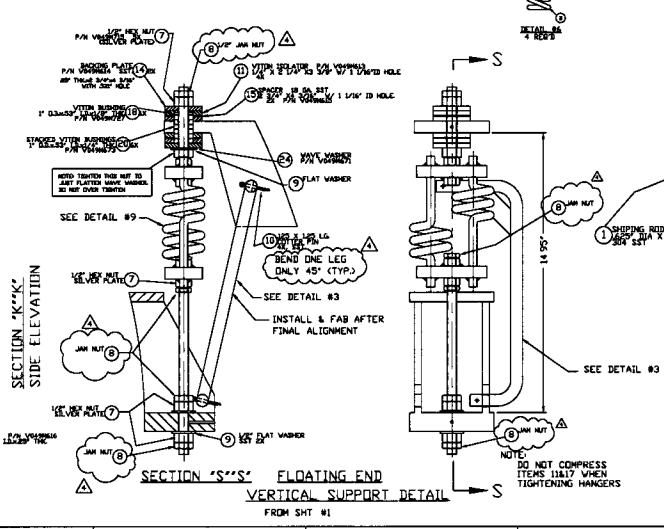
- NOTES
- 1) POSITION FIRST BENDS AWAY FROM EACH OTHER FOR MAXIMUM CLEARANCE
  - 2) BEFORE WELDING SPRINGS INTO BAR ASSEMBLIES, THE TWO SPRINGS MUST BE MATCHED FOR SIMILAR SPRING RATES. ALL SPRINGS MUST BE CHECKED AND PAIRED-OFF WITH SIMILAR SPRING RATES AND RECORDED FOR ENGINEERING TO VERIFY USE BEFORE WELDING INTO BARS.
  - 3) NO THREADS BEYOND END OF NUT



DETAIL #2  
2 REQUIRED

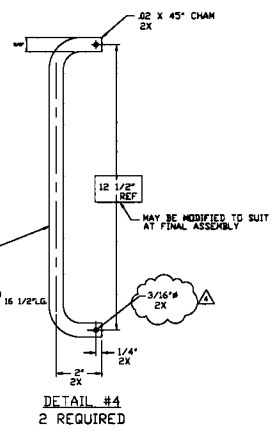


FIXED END  
COMBO HANGER DETAIL  
FROM SHT #1



SECTION 'K-K'  
SIDE ELEVATION

SECTION 'S-S'  
FLOATING END  
VERTICAL SUPPORT DETAIL  
FROM SHT #1



DETAIL #4  
2 REQUIRED

PROCESS SYSTEMS INTERNATIONAL INC.  
20 WALKER DR. WESTBOROUGH, MASSACHUSETTS 01581 USA

NOTE: DO NOT COMPRESS ITEMS THAT WHEN TIGHTENING HANGERS

BOK PUMP RESERVOIR SUPPORT ASSY  
LONG - LEFT & RIGHT -  
LIGO VACUUM EQUIPMENT

SCALE: NONE

REV	4
DATE	04/09/95
BY	J
APP'D	V049-4-095
REV	4

SCALE: NONE SHEET: 2 OF 2