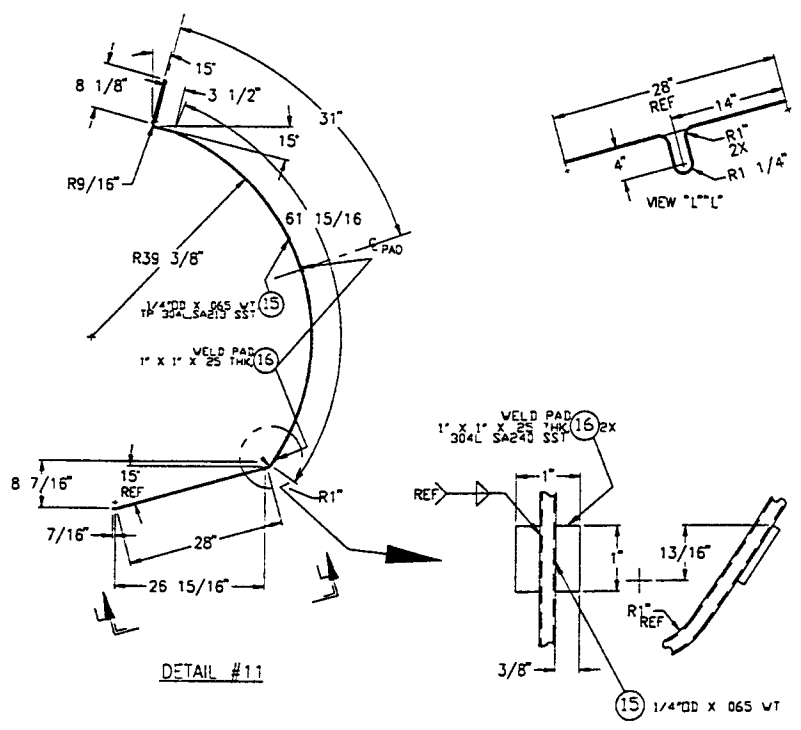
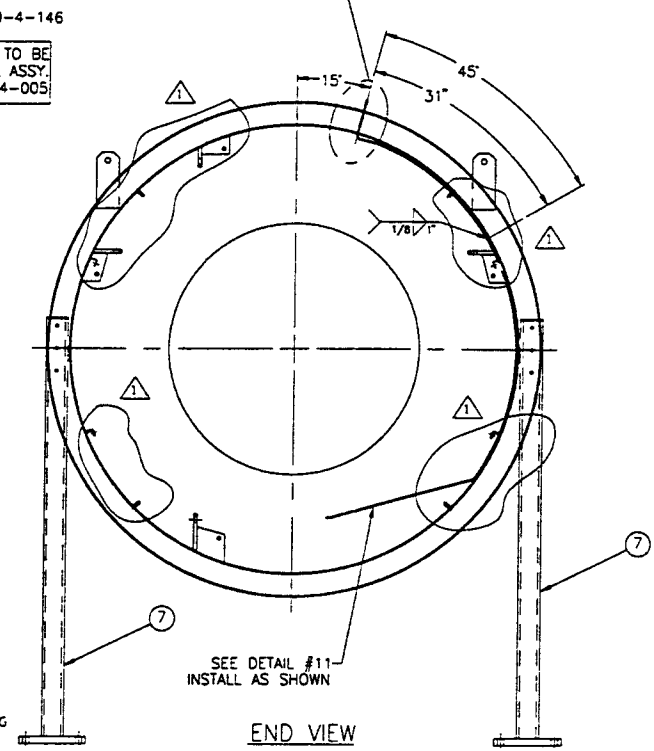
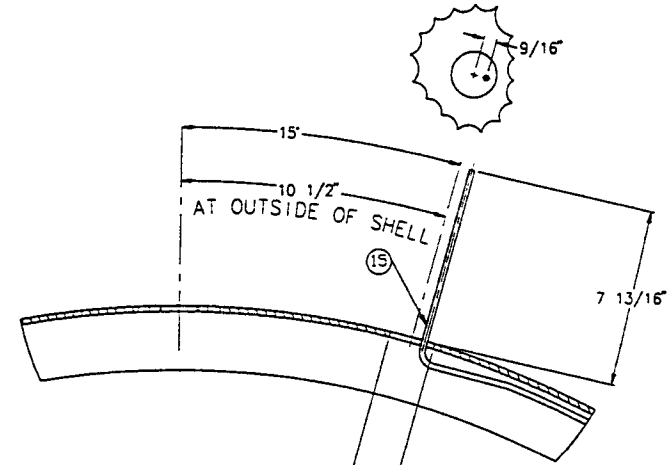
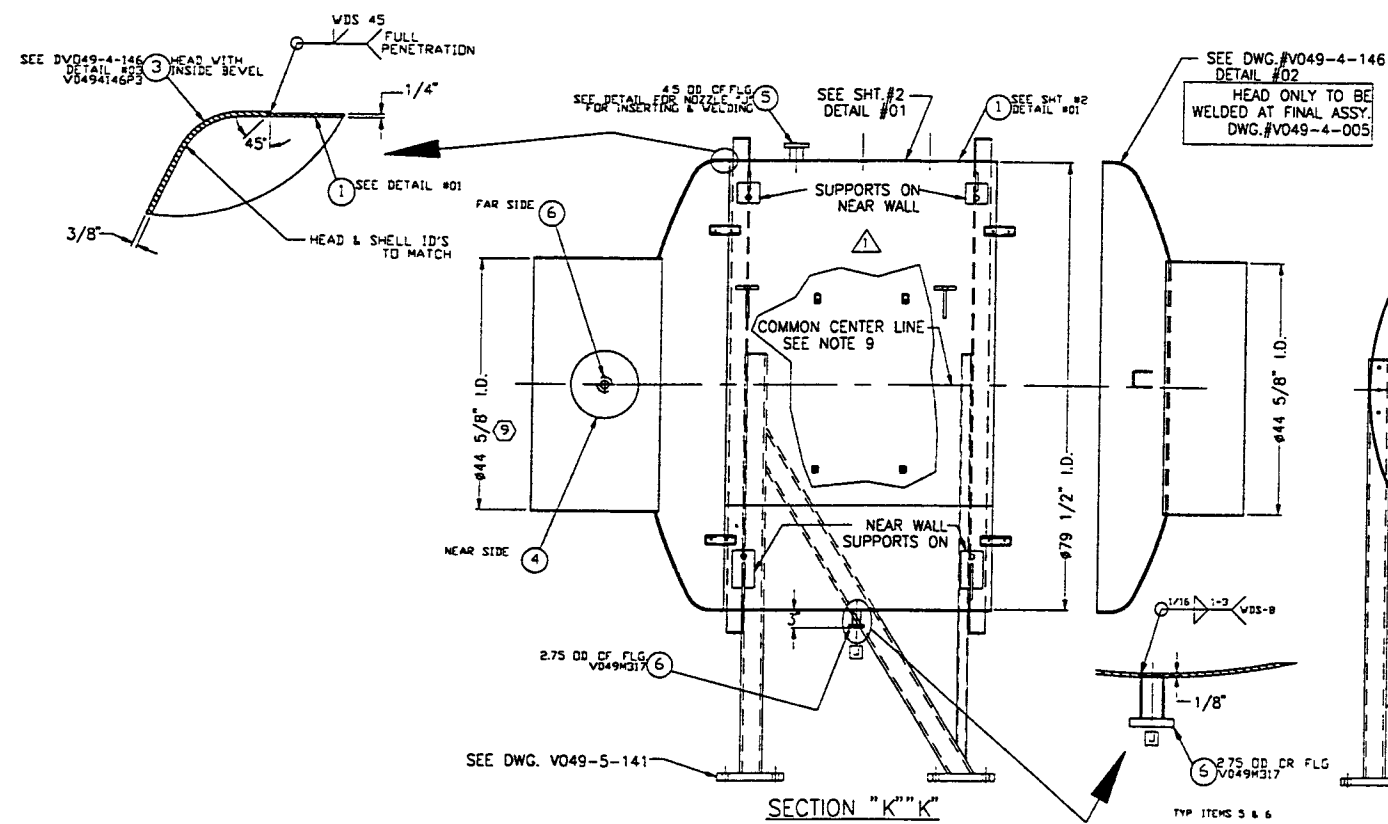
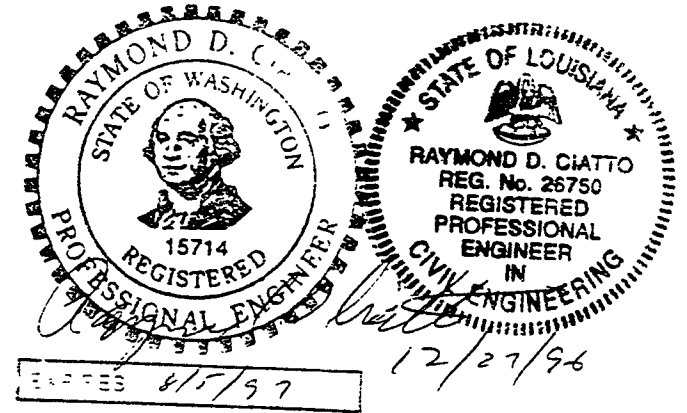


- 11 WDS NO'S REFER TO WELD DATA SPEC V049-2-084
- 10 USE LEG ASSEMBLY FOR STIFFENER ALIGNMENT SPACING
- 9 ID'S ARE TO BE ALIGNED ALONG THEIR COMMON CENTER LINE TO WITHIN ±0.06
- 8 LEAK TEST & METHOD PER PSI SPEC V049-2-014, BY PSI.
- 7 CERTIFIED MANUFACTURER'S MATERIAL TEST REPORTS REQUIRED, AS NOTED.
- 6 FLANGE BOLT HOLES TO STRADDLE NATURAL CENTERLINES OF VESSEL UNLESS NOTED
- 5 CLEAN PER SPEC V049-2-015
- 4 NOZZLES 'B' TO BE CONTOURED TO INSIDE DIAMETER OF SHELL OR TO CURVATURE OF HEAD, UNLESS OTHERWISE NOTED
- 3 DO NOT USE CARBON STEEL BRUSHES OR BRUSHES CONTAMINATED WITH CARBON STEEL ON STAINLESS OR ALUMINUM MATERIAL GRINDING TO INTERNAL VACUUM BOUNDARY SURFACES IS NOT ALLOWED
- 2 HEADS ARE ASME F&D
- 1 CHAMBER FABRICATION TO BE IN ACCORDANCE WITH SPEC V049-2-096

WEIGHTS: SHELL ASSY. = 3100 LBS  
SUPPORTS = 600 LBS  
TOTAL = 3700 LBS



<p>PROPRIETARY AND CONFIDENTIAL</p> <p>THIS DOCUMENT CONTAINS PROPRIETARY INFORMATION BELONGING TO PROCESS SYSTEMS INTERNATIONAL, INC OR ITS AFFILIATED COMPANIES AND SHALL BE USED ONLY FOR THE PURPOSE FOR WHICH IT WAS SUPPLIED. IT SHALL NOT BE COPIED, REPRODUCED OR OTHERWISE USED, NOR SHALL SUCH INFORMATION BE FURNISHED IN WHOLE OR IN PART TO OTHERS EXCEPT IN ACCORDANCE WITH THE TERMS OF ANY AGREEMENT UNDER WHICH IT WAS SUPPLIED OR WITH THE PRIOR WRITTEN CONSENT OF PROCESS SYSTEMS INTERNATIONAL, INC AND SHALL BE RETURNED UPON REQUEST.</p>		<p>SYMBOL CHARACTERISTIC UNLESS OTHERWISE SPECIFIED DIMENSIONS ARE IN INCHES</p> <p>□ FLATNESS TOLERANCES: FRACTIONAL ± 1 ANGULAR APPROX 10°-30° BEND 10° TWO PLACE DECIMAL ± 0.03 THREE PLACE DECIMAL ± 0.015 FINISHED SURFACE RMS 6.3 BREAK CORNERS IN OUT REMOVE ALL BURRS</p>	<p>1 ISSUED FOR FABRICATION</p> <p>0 ISSUED FOR FABRICATION</p>	<p>GS REF DWG R DOLZEC</p> <p>PV 12/9/96 0379</p>	
DWG NO	DESCRIPTION	DWG NO	DESCRIPTION	<p>DO NOT SCALE THIS DRAWING</p> <p>USED ON:</p> <p>REV DESCRIPTION</p>	<p>DMW GS PEF DM RDC REC JT 11/8/96 0341</p>
REFERENCE DRAWINGS				<p>ISSUE DESCRIPTION</p>	<p>CHKD DRWN DATE DECD</p>
				<p>SCALE NONE</p>	<p>SHEET 1 OF 2</p>

**PROCESS SYSTEMS INTERNATIONAL INC.**  
20 WALKUP DR WESTBOROUGH, MASSACHUSETTS 01581 USA

**80K PUMP WELDMENT-SHORT-RIGHT**

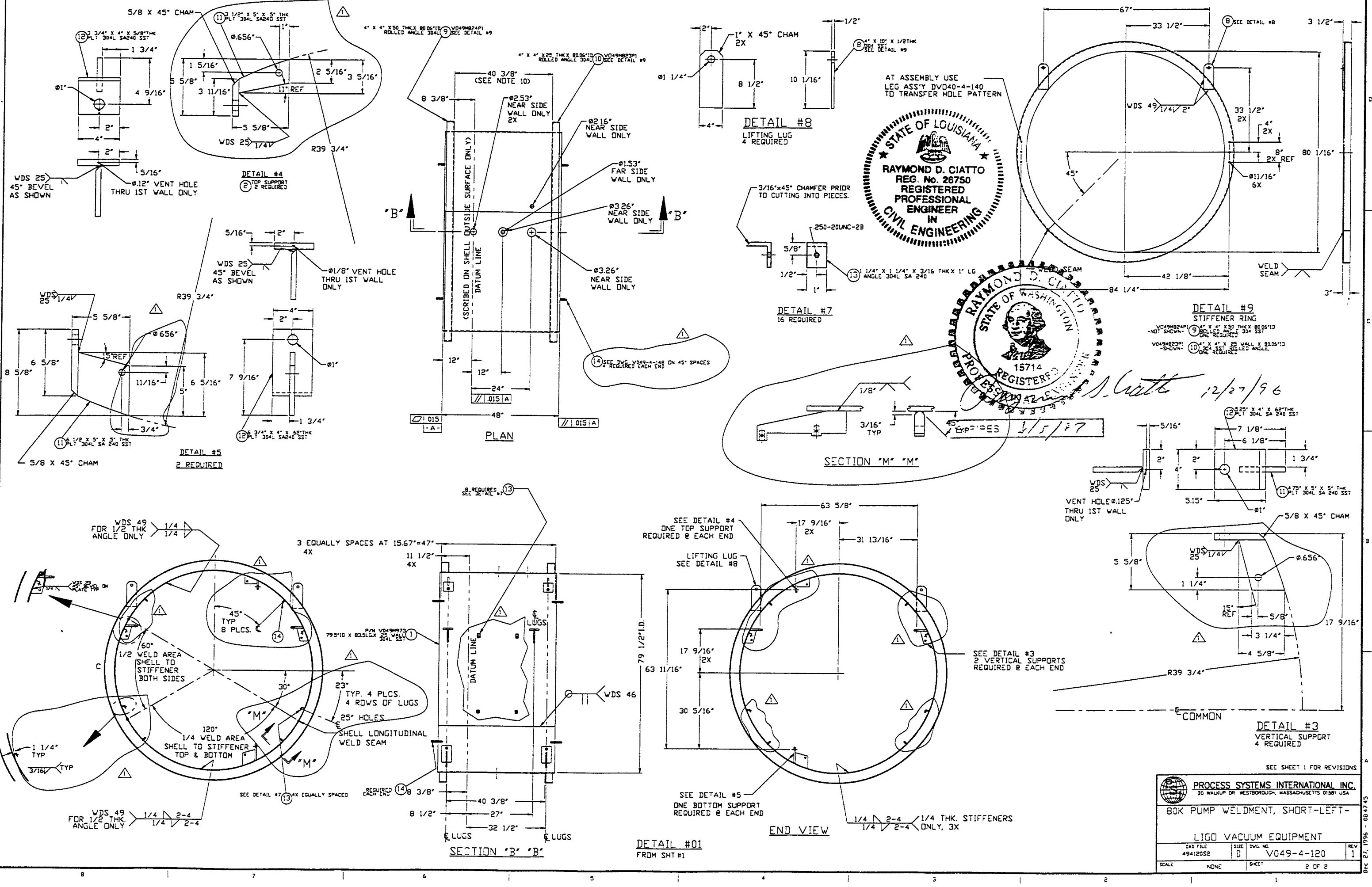
**LIGO VACUUM EQUIPMENT**

CAD FILE: 49412051 | SIZE: D | DWG NO: V049-4-120 | REV: 1

SCALE: NONE | SHEET: 1 OF 2

LIGO-D970422-01-V

DEC 27, 1996 - 08:42:17



STATE OF LOUISIANA  
 RAYMOND D. CIATTO  
 REG. No. 26750  
 REGISTERED PROFESSIONAL ENGINEER IN CIVIL ENGINEERING

STATE OF WASHINGTON  
 RAYMOND D. CIATTO  
 REGISTERED PROFESSIONAL ENGINEER  
 15714

*Raymond D. Ciatto* 12/27/96

PROCESS SYSTEMS INTERNATIONAL INC. 20 WALKUP DR WESTBOROUGH, MASSACHUSETTS 01581 USA			
80K PUMP WELDMENT, SHORT-LEFT-			
LIGD VACUUM EQUIPMENT			
CAD FILE 49412052	SIZE D	DWG NO. V049-4-120	REV 1
SCALE NONE	SHEET 2	OF 2	

DEC 27, 1996 - 004745