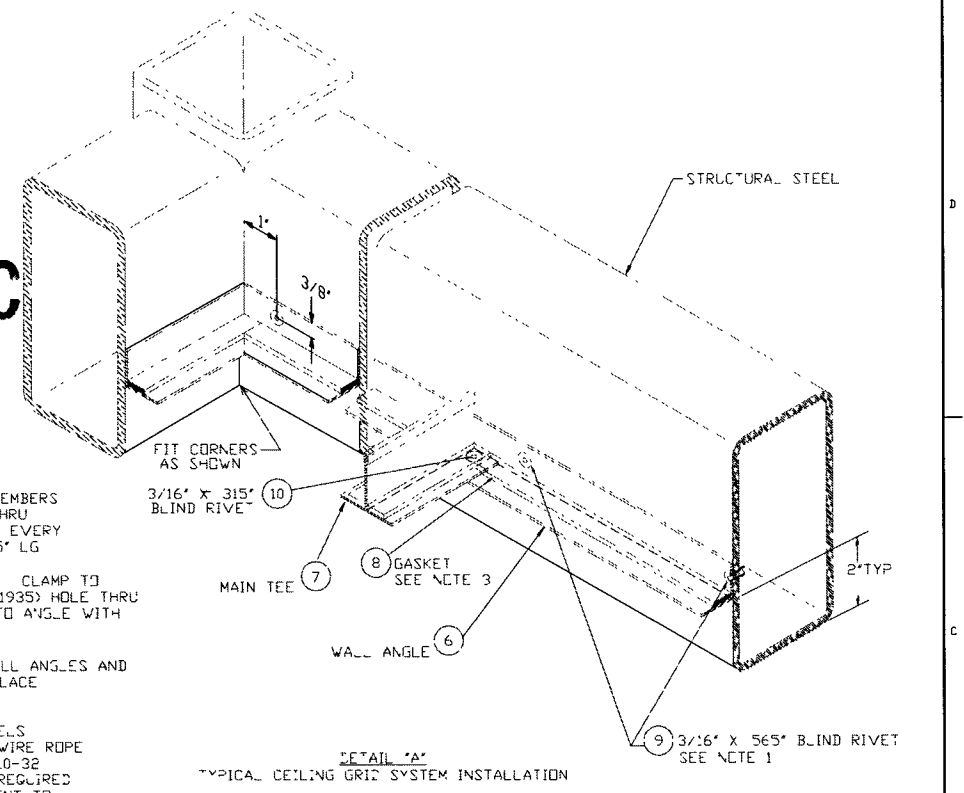


ELECTRONIC COPY

- NOTES**
- 1) CLAMP WALL ANGLE TO STRUCTURAL MEMBERS AS SHOWN. DRILL #10 (1935) HOLE THRU WALL ANGLE AND STRUCTURAL MEMBER EVERY 8" ATTACH ANGLE WITH 3/16" X 565" LG BLIND RIVET.
 - 2) LOCATE MAIN TEE'S & CUT TO LENGTH. CLAMP TO WALL ANGLE AS SHOWN. DRILL #10 (1935) HOLE THRU WALL ANGLE AND TEE ATTACH TEE TO ANGLE WITH 3/16" X .315" LG BLIND RIVET.
 - 3) INSTALL GASKET AS SHOWN AFTER WALL ANGLES AND MAIN TEE'S HAVE BEEN RIVETED IN PLACE.



- GENERAL NOTES**
- 1) ATTACH ALL FILTERS AND LIGHTING PANELS TO STRUCTURAL STEEL WITH ITEM #26 WIRE ROPE ASSEMBLIES PROVIDED. DRILL & TAP #10-32 HOLE IN FILTER & LIGHTING PANEL AS REQUIRED TO ATTACH WIRE ROPE SEAL ATTACHMENT TO FILTER WITH RTV SEALANT.
 - 2) SUPPORT 3/4" IMC CONDUIT FROM STRUCTURAL STEEL AS REQUIRED USING ITEM #25 3/4" CONDUIT HANGER.
 - 3) LOCATE AND INSTALL ITEM #32 DISCONNECT SWITCH AT ASSEMBLY. LOCATE AND DRILL AT ASSEMBLY (3) 1/4-20 HOLES FOR INSTALLATION OF DISCONNECT SWITCH.

*=PARTS SUPPLIED BY PSI, ALL OTHER PARTS BY CONTRACTOR

APPROX. WT = 4100#

ITEM	PSI PART NUMBER	QTY	U/M	DESCRIPTION
33	V049E110	3	EA	FUSE, 20A, LITTLEFUSE #FLSR20
32	V049E108	1	EA	DISCONNECT SWITCH, FUSED, 60A, 600VAC CUTLER HAMMER DH362NGK
31	BY FIELD	12	EA	FLUORESCENT BULB, 4100K, 25 WATT SYLVANIA OCTRON F025/741
30	V0492142-P3	4	EA	2' X 3' LIGHTING PANEL, 277VAC PER SPEC V049-2-142
29	V0492142-P2	4	EA	2' X 3' HEPA FILTER/BLOWER, 277VAC PER SPEC V049-2-142
28	V0492142-P1	8	EA	2' X 4' HEPA FILTER/BLOWER, 277VAC PER SPEC V049-2-142
27	B0529852	64	EA	SCREW #10-32 X 1/2" LG
26	V049E033	16	EA	WIRE ROPE ASSY, 1/16" DIA EYE BOTH ENDS 18" LG, 96 LBS CAP
25	0829437	7	EA	CONDUIT, 3/4" HANGER
24	V049E041	9	EA	COVER, DEVICE BOX, DUPLEX RECEPTACLE SINGLE GANG
23	V049E040	9	EA	RECEPTACLE, DUPLEX, 15A 277VAC NEMA L7-15R, TWIST-LOCK
22	V049E039	1	EA	DEVICE BOX, SINGLE GANG, (1) 3/4" HUBS ALUMINUM W/ MNTG LUGS
21	V049E032	8	EA	DEVICE BOX, SINGLE GANG, (2) 3/4" HUBS ALUMINUM W/ MNTG LUGS
20	0829432	44	FT	CONDUIT, 3/4", IMC
19	300578	1	EA	CONDUIT HUB, 3/4"
18	202190	25	FT	CABLE, 5/C #8 AWG, TYPE SD 90° B, 600VAC
17	V049E030	1	EA	MALE PLUG, TWIST-LOCK, 60A 3 PH *Y* 277/480VAC
16	V049E031	1	EA	CORD GRIP, 1" NPT, ALUMINUM 875 - 100 DIA GRIP

ITEM	PSI PART NUMBER	QTY	U/M	DESCRIPTION
37	B0521043	37	EA	SCREW S/S, 1/4-20 X 3/4" LG
14	V0493039	1	EA	ASSY, JUNCTION FUSE BOX, CLEAN ROOM HORIZONTAL ACCESS MODULE
13	V049E029	16	EA	CLEAN ROOM GRID, HOLD DOWN CLIP CEILING PANEL
12	V049E028	11	EA	CEILING PANEL, 2' X 4' X 1/2", WHITE CLASS 100 CLEAN ROOM
11	V0492144P1	1	EA	CLEAN ROOM SOFTWALL PANEL SET, HAM PER SPEC V049-2-144
10	V049E027	72	EA	RIVET, BLIND, 3/16" X .315, ST STEEL 063 TO 125 GRIP RANGE
9	V049E026	192	EA	RIVET, BLIND, 3/16" X .565, ST STEEL 251 TO 375 GRIP RANGE
8	V049E025	210	FT	GASKET, ADHESIVE, 1/2" X 1/4" THK BLACK NEOPRENE
7	V049E024	130	FT	CLEAN ROOM GRID, 1 1/2" MAIN TEE NO GASKET, WHITE
6	V049E023	140	FT	CLEAN ROOM GRID, 1" WALL ANGLE NO GASKET, WHITE
5	B0520654	16	EA	1/2"-13 HEX NUT S/S
4	B0521632	16	EA	1/2" FLAT WASHER S/S
3	B0521063	16	EA	SCREW, 1/2"-13 X 2" LG S/S
2	V049E022	4	EA	CASTER, 6" DIA X 3" W/BRAKE 1800 LBS CAP
1	V0494137	1	EA	STRUCTURE WELDMENT, CLEAN ROOM HORIZONTAL ACCESS MODULE

DWG NO	DESCRIPTION	DWG NO	DESCRIPTION
V049-3-040	HAM CLEAN ROOM ELECTRICAL SCHEMATIC		
V049-4-137	HAM CLEAN ROOM STRUCTURE WELDMENT		

REV	DESCRIPTION	CHKD	DRWN	DATE	DEDR
3	ADDED DISCONNECT SWITCH			8/31/98	0629
2	REISSUED FOR FAB AS NOTED	PEF	DMW	RV	REC 08/18/97 0540
1	REISSUED FOR FAB AS NOTED	PEF	DMW	RV	PV 4/8/97 0466
0	ISSUED FOR FAB	PEF	DMW	RV	BAR 10/17/96 0276

PROCESS SYSTEMS INTERNATIONAL INC.
20 WALKUP DR WESTBOROUGH, MASSACHUSETTS 01581 USA

CLEAN ROOM ASSEMBLY--HAM HORIZONTAL ACCESS MODULE

LIGO VACUUM EQUIPMENT

CAD FILE: V0494136
SIZE: D
DWG NO: V049-4-136
REV: 3
SCALE: 1"=2'
SHEET: 1 OF 1

PROPRIETARY AND CONFIDENTIAL
THIS DOCUMENT CONTAINS PROPRIETARY INFORMATION BELONGING TO PROCESS SYSTEMS INTERNATIONAL INC OR ITS AFFILIATED COMPANIES AND SHALL BE USED ONLY FOR THE PURPOSE FOR WHICH IT WAS SUPPLIED. IT SHALL NOT BE COPIED, REPRODUCED OR OTHERWISE USED, NOR SHALL SUCH INFORMATION BE FURNISHED IN WHOLE OR IN PART TO OTHERS EXCEPT IN ACCORDANCE WITH THE TERMS OF ANY AGREEMENT UNDER WHICH IT WAS SUPPLIED OR WITH THE PRIOR WRITTEN CONSENT OF PROCESS SYSTEMS INTERNATIONAL, INC AND SHALL BE RETURNED UPON REQUEST.

AUG 31 11:59 AM '98