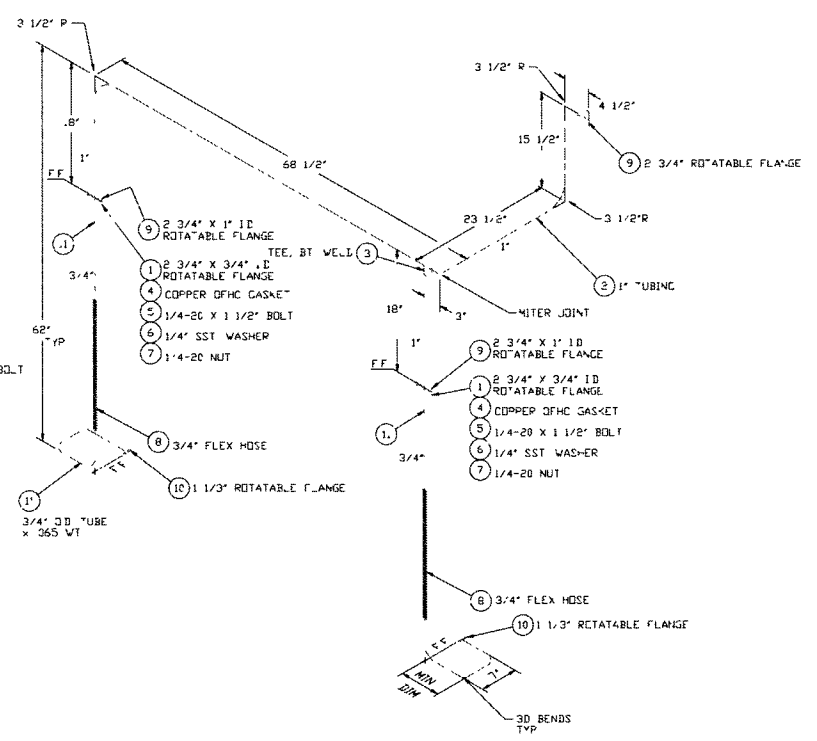
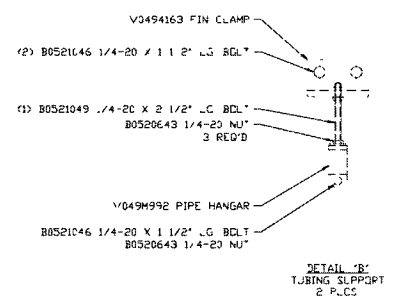
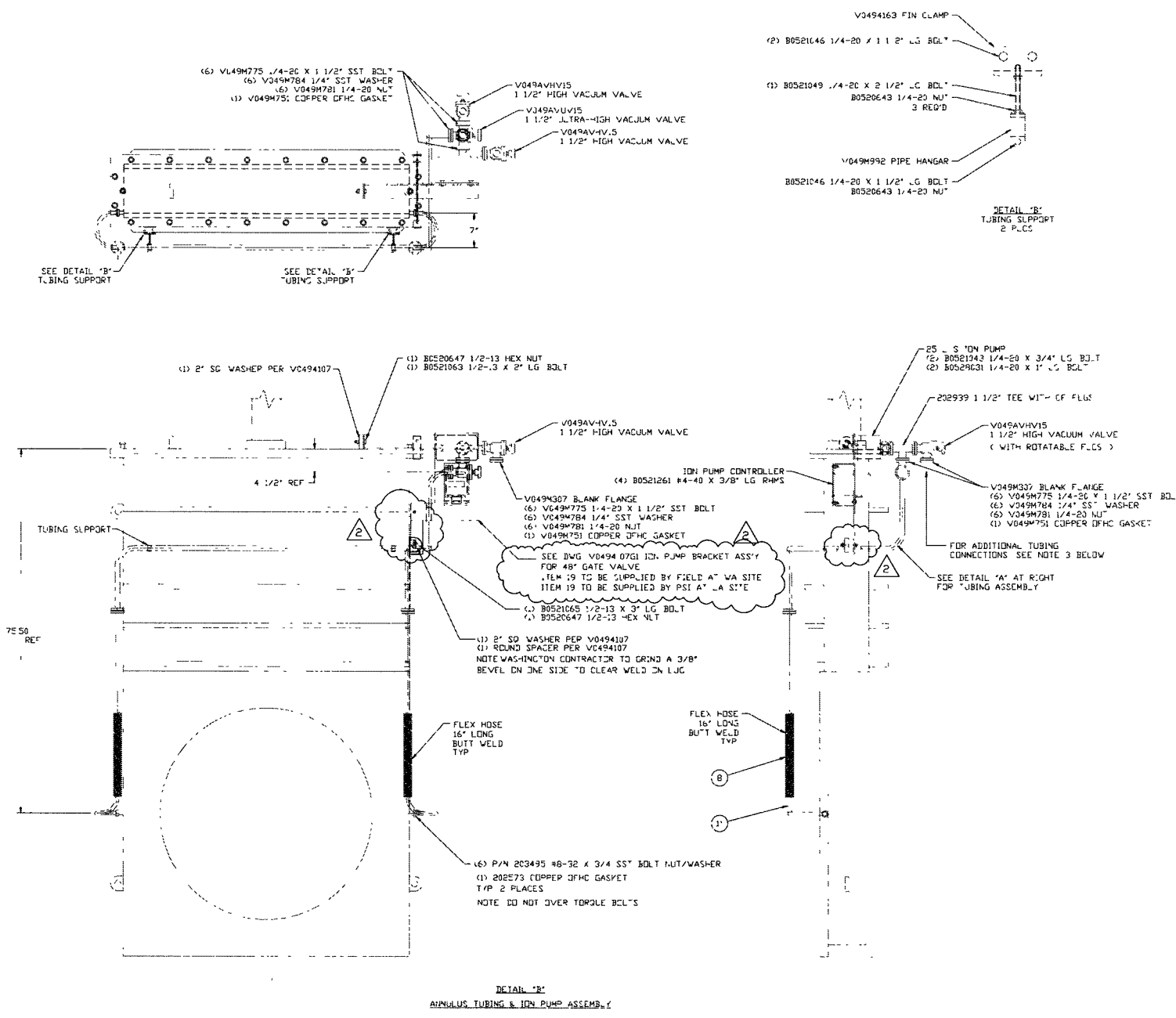


# ELECTRONIC COPY



DETAIL 'A' P/N V0494165  
 48\"/>

**NOTES**

- FOR MOUNTING / ORIENTATION OF ASSEMBLY ON 48\"/>
  - TABLE OF ASSEMBLIES SHIPPED BY PSI
- | SITE                     | BILL OF MATERIAL                        | QTY | INSTALLER      |
|--------------------------|---|-----|----------------|
| WASHINGTON CORNER STA    | V0491151G1 (WITHOUT DETAIL 'A' SPOOL)   | 4   | PSI CONTRACTOR |
| LOUISIANA MID-JOINT      | V0491156G1                              | 2   | LIGO           |
| LOUISIANA MID-JOINT      | V0494165 (DETAIL 'A' SPOOL)             | 2   | LIGO           |
| LOUISIANA MID-JOINT      | V0494167 (GV TOP BONNET ANNULUS TUBING) | 2   | LIGO           |
| LOUISIANA CORNER STATION | V0491151G1 (WITHOUT DETAIL 'A' SPOOL)   | 2   | PSI CONTRACTOR |
- THE ABOVE ASSEMBLIES ARE ALSO USED WITH THE FOLLOWING DRAWINGS  
 ANNULUS TUBING - TYPE I DWG BV049-4-108 WA + LA CORNER STATION RIGHT & LEFT MAIN ARMS  
 TYPE II DWG BV049-4-110 WA CORNER STATION DIAGONAL BEAM SPOOLS  
 DWG BV049-4-167 LA MID-JOINT BONNET

LIGO-D970450-01-V

LIGO-D970450-01-V

PROPRIETARY AND CONFIDENTIAL  
 THIS DOCUMENT CONTAINS PROPRIETARY INFORMATION BELONGING TO PROCESS SYSTEMS INTERNATIONAL, INC. OR ITS AFFILIATED COMPANIES AND SHALL BE USED ONLY FOR THE PURPOSE FOR WHICH IT WAS SUPPLIED. IT SHALL NOT BE COPIED, REPRODUCED OR OTHERWISE DISSEMINATED IN WHOLE OR IN PART TO OTHERS EXCEPT IN ACCORDANCE WITH THE TERMS OF ANY AGREEMENT UNDER WHICH IT WAS SUPPLIED OR WITH THE PRIOR WRITTEN CONSENT OF PROCESS SYSTEMS INTERNATIONAL, INC. AND SHALL BE RETURNED UPON REQUEST.

DWG NO	DESCRIPTION	DWG NO	DESCRIPTION
V049-4-107	25 L/S ION PUMP SUPPORT ASSY		
V049-0-100	DRAWING TREE / BOM STRUCTURE		
V049-2-021	SPEC INSTALLATION / COMMISSIONING		

UNLESS OTHERWISE SPECIFIED  
 DIMENSIONS ARE IN INCHES  
 TOLERANCES:  
 FRACTIONAL ±  
 ANGULAR APPROX 1/4°-30° BOND 12°  
 TWO PLACE DECIMAL ± .01  
 THREE PLACE DECIMAL ± .005  
 FINISHED SURFACE AND BREAK CORNERS IN  
 OUT.  
 REMOVE ALL BURRS

DO NOT SCALE THIS DRAWING	REV	DESCRIPTION	ISSUE DESCRIPTION	RDC	DW	REC	BAR	CHKD	DRWN	DATE	DEGR
	2	REISSUED FOR CONSTRUCTION AS NOTED								11/24/97	0560
	1	ISSUED FOR CONSTRUCTION								05/09/97	0490
	0	ISSUED FOR RELEASE/BIDS								11/21/96	0358

**PROCESS SYSTEMS INTERNATIONAL, INC.**  
 20 WALKUP DR WESTBOROUGH, MASSACHUSETTS 01581 USA

**ANNULUS TUBING & ION PUMP ASSY  
 48\"/>**

LIGO VACUUM EQUIPMENT

CAD FILE	SIZE	DWG NO	REV
V0494165	D	V049-4-165	2

SCALE NONE SHEET 1 OF 1

PROPRIETARY AND CONFIDENTIAL  
 THIS DOCUMENT CONTAINS PROPRIETARY INFORMATION BELONGING TO PROCESS SYSTEMS INTERNATIONAL, INC. OR ITS AFFILIATED COMPANIES AND SHALL BE USED ONLY FOR THE PURPOSE FOR WHICH IT WAS SUPPLIED. IT SHALL NOT BE COPIED, REPRODUCED OR OTHERWISE DISSEMINATED IN WHOLE OR IN PART TO OTHERS EXCEPT IN ACCORDANCE WITH THE TERMS OF ANY AGREEMENT UNDER WHICH IT WAS SUPPLIED OR WITH THE PRIOR WRITTEN CONSENT OF PROCESS SYSTEMS INTERNATIONAL, INC. AND SHALL BE RETURNED UPON REQUEST.