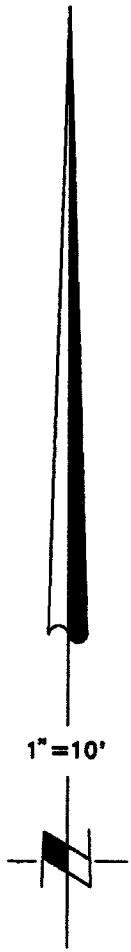
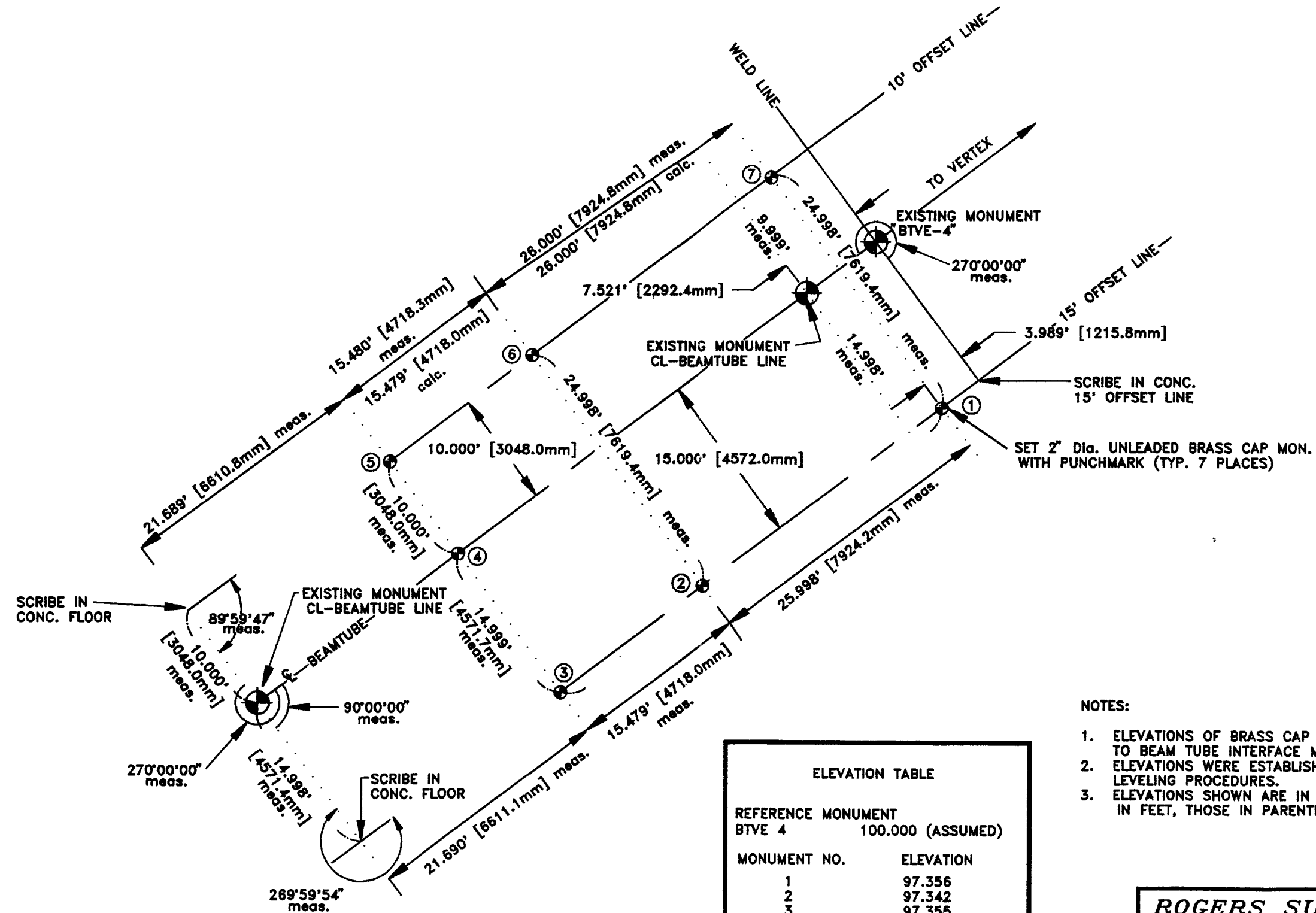


LIGO PROJECT-HANFORD SITE

VACUUM EQUIPMENT MONUMENTS END-STATION SOUTHWEST ARM



NOTES:

1. ELEVATIONS OF BRASS CAP MONUMENTS ARE RELATIVE TO BEAM TUBE INTERFACE MONUMENT (BTVE) NO. 4.
2. ELEVATIONS WERE ESTABLISHED BY "3 WIRE" LEVELING PROCEDURES.
3. ELEVATIONS SHOWN ARE IN FEET, DIMENSIONS ARE SHOWN IN FEET, THOSE IN PARENTHESES ARE MILLIMETERS.

| ELEVATION TABLE | |
|--------------------|-------------------|
| REFERENCE MONUMENT | |
| BTVE 4 | 100.000 (ASSUMED) |
| MONUMENT NO. | ELEVATION |
| 1 | 97.356 |
| 2 | 97.342 |
| 3 | 97.355 |
| 4 | 97.373 |
| 5 | 97.359 |
| 6 | 97.366 |
| 7 | 97.361 |

| | |
|------------------------------|--|
| ROGERS SURVEYING INC. | |
| SCALE 1"=10' | |
| RICHLAND, WASHINGTON | |
| SHEET 1 OF 1 | CLIENT: PARSONS INFRASTRUCTURE & TECHNOLOGY GROUP INC. |
| DATE 09/08/97 | PROJECT: S.W. ARM END STATION SURVEY MONUMENT INSTALLATION |
| DRN. BY M.F.H. | FILE: END-SW.DWG JOB: NO. 15597 |