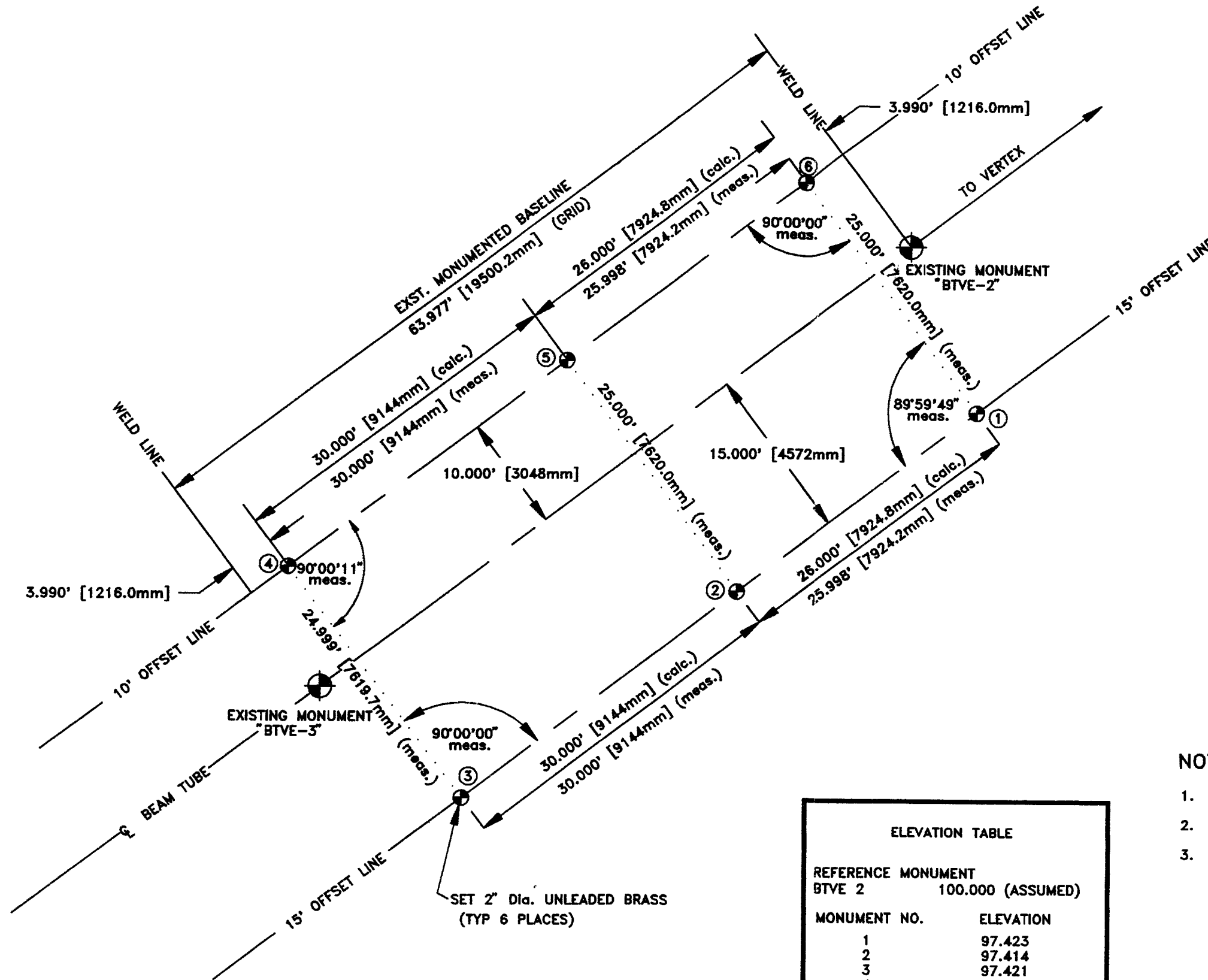


LIGO PROJECT—HANFORD SITE

VACUUM EQUIPMENT MONUMENTS MID-STATION SOUTHWEST ARM



ELEVATION TABLE	
REFERENCE MONUMENT BTVE 2 100.000 (ASSUMED)	
MONUMENT NO.	ELEVATION
1	97.423
2	97.414
3	97.421
4	97.420
5	97.427
6	97.426
BTVE 3	100.026

NOTES:

- ELEVATIONS OF BRASS CAP MONUMENTS ARE RELATIVE TO BEAM TUBE INTERFACE MONUMENT (BTVE) NO. 2.
- ELEVATIONS WERE ESTABLISHED BY "3 WIRE" LEVELING PROCEDURES.
- ELEVATIONS SHOWN ARE IN FEET, DIMENSIONS ARE SHOWN IN FEET, THOSE IN PARENTHESES ARE MILLIMETERS.

ROGERS SURVEYING INC., PS	
SCALE 1"=10'	
RICHLAND, WASHINGTON	
SHEET 1 OF 1	CLIENT: PARSONS INFRASTRUCTURE & TECHNOLOGY GROUP INC.
DATE 09/10/97	PROJECT: S.W. ARM MID STATION SURVEY MONUMENT INSTALLATION
DRN. BY M.F.H.	FILE: MID-SW.DWG JOB: NO. 15597

L190-D970513-00-V