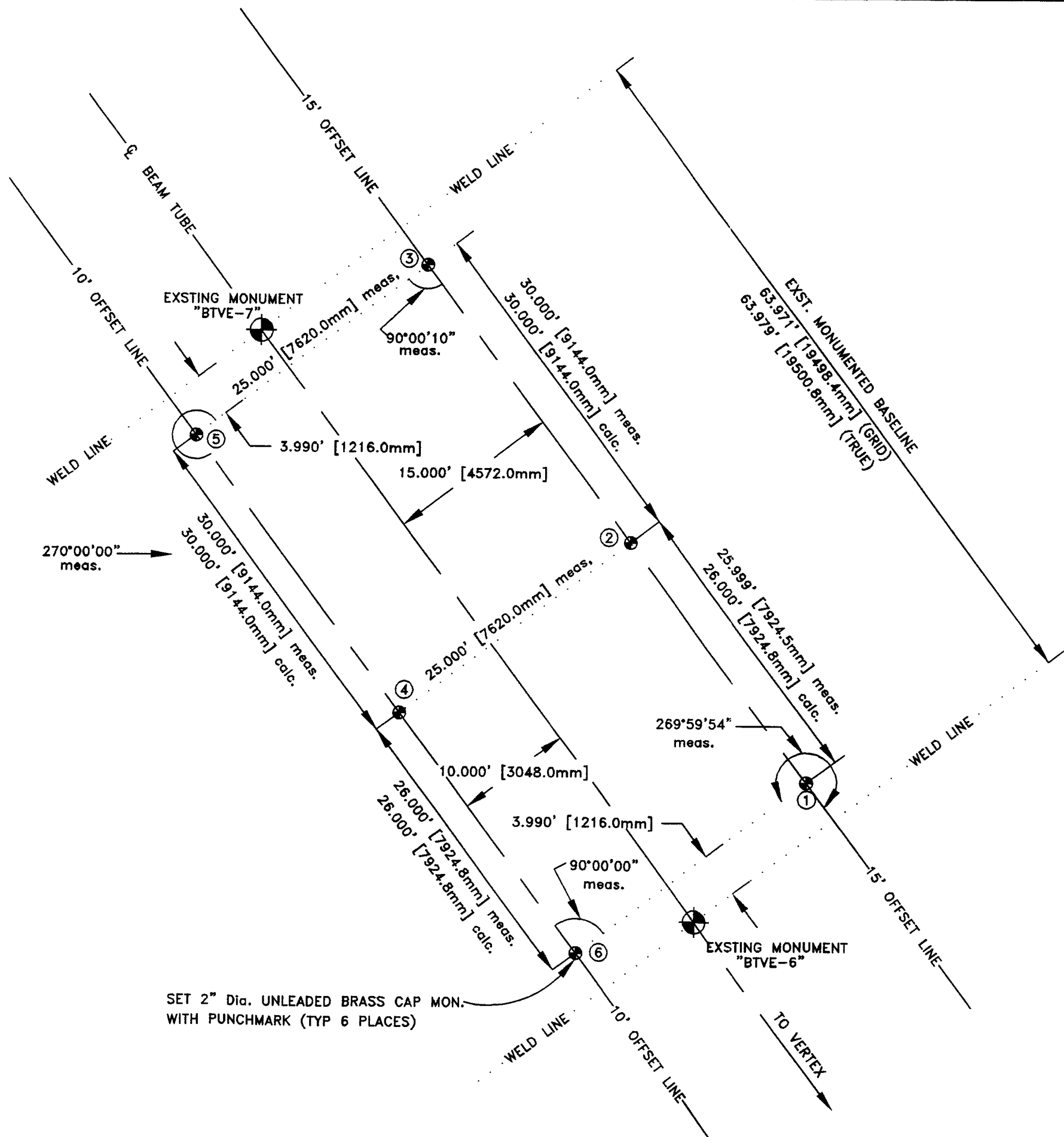


LIGO PROJECT-HANFORD SITE

VACCUM EQUIPMENT MONUMENTS MID-STATION NORTHWEST ARM



SET 2" Dia. UNLEADED BRASS CAP MON.
WITH PUNCHMARK (TYP 6 PLACES)

MONUMENT NO.	ELEVATION
REFERENCE MONUMNET	
BTVE 6	100.000 (ASSUMED)
1	97.369
2	97.373
3	97.365
4	97.361
5	97.361
6	97.373
BTVE 7	99.994



NOTES:

- ELEVATIONS OF BRASS CAP MONUMENTS ARE RELATIVE TO BEAM TUBE INTERFACE MONUMENT (BTVE) NO. 6.
- ELEVATIONS WERE ESTABLISHED BY "3 WIRE" LEVELING PROCEDURES.

LIGO-D970514-00-V

ROGERS SURVEYING INC., PS		
RICHLAND, WASHINGTON		
SCALE 1"=10'	CLIENT: PARSONS INFRASTRUCTURE & TECHNOLOGY GROUP INC.	
SHEET 1 OF 1	PROJECT: N.W. ARM MID STATION SURVEY MONUMENT INSTALLATION	
DATE 09/16/97	FILE: MID-NW.DWG	JOB: NO. 15597
DRN. BY M.F.H.		