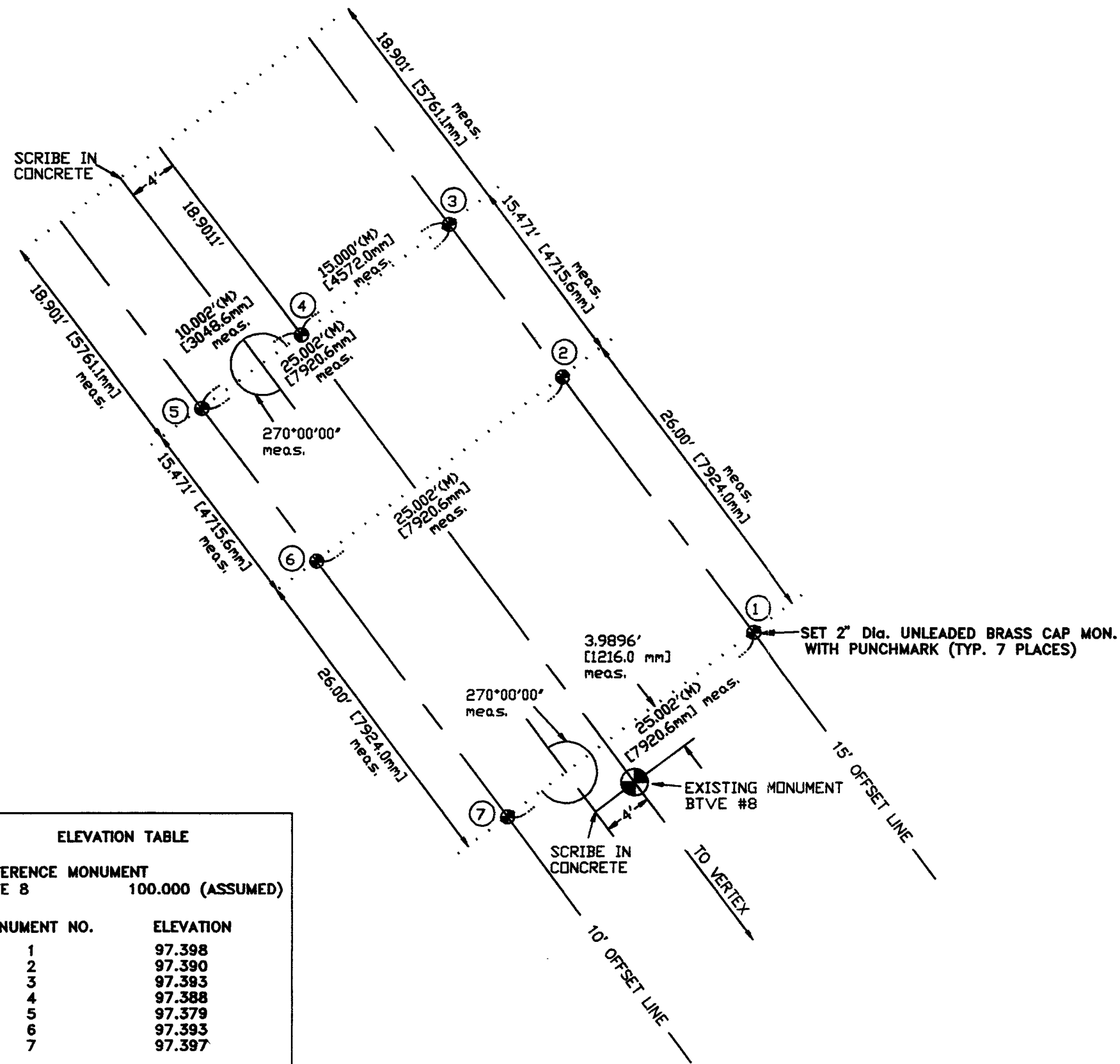


LIGO PROJECT-HANFORD SITE

VACUUM EQUIPMENT MONUMENTS END-STATION NORTHWEST ARM



ELEVATION TABLE	
REFERENCE MONUMENT	
BTVE 8	100.000 (ASSUMED)
MONUMENT NO.	ELEVATION
1	97.398
2	97.390
3	97.393
4	97.388
5	97.379
6	97.393
7	97.397

NOTES:

1. ELEVATIONS OF BRASS CAP MONUMENTS ARE RELATIVE TO BEAM TUBE INTERFACE MONUMENT (BTVE) NO. 8.
2. ELEVATIONS WERE ESTABLISHED BY "3 WIRE" LEVELING PROCEDURES.
3. ELEVATIONS SHOWN ARE IN FEET, DIMENSIONS ARE SHOWN IN FEET, THOSE IN PARENTHESES ARE MILLIMETERS.

ROGERS SURVEYING INC., PS		
RICHLAND, WASHINGTON		
SCALE 1"=10'	CLIENT: PARSONS INFRASTRUCTURE & TECHNOLOGY GROUP INC.	
SHEET 1 OF 1	PROJECT: N.W. ARM END STATION SURVEY MONUMENT INSTALLATION	
DATE 9/11/97	DRN. BY M.F.H.	FILE: END-NW.DWG
	JOB:	NO. 15597