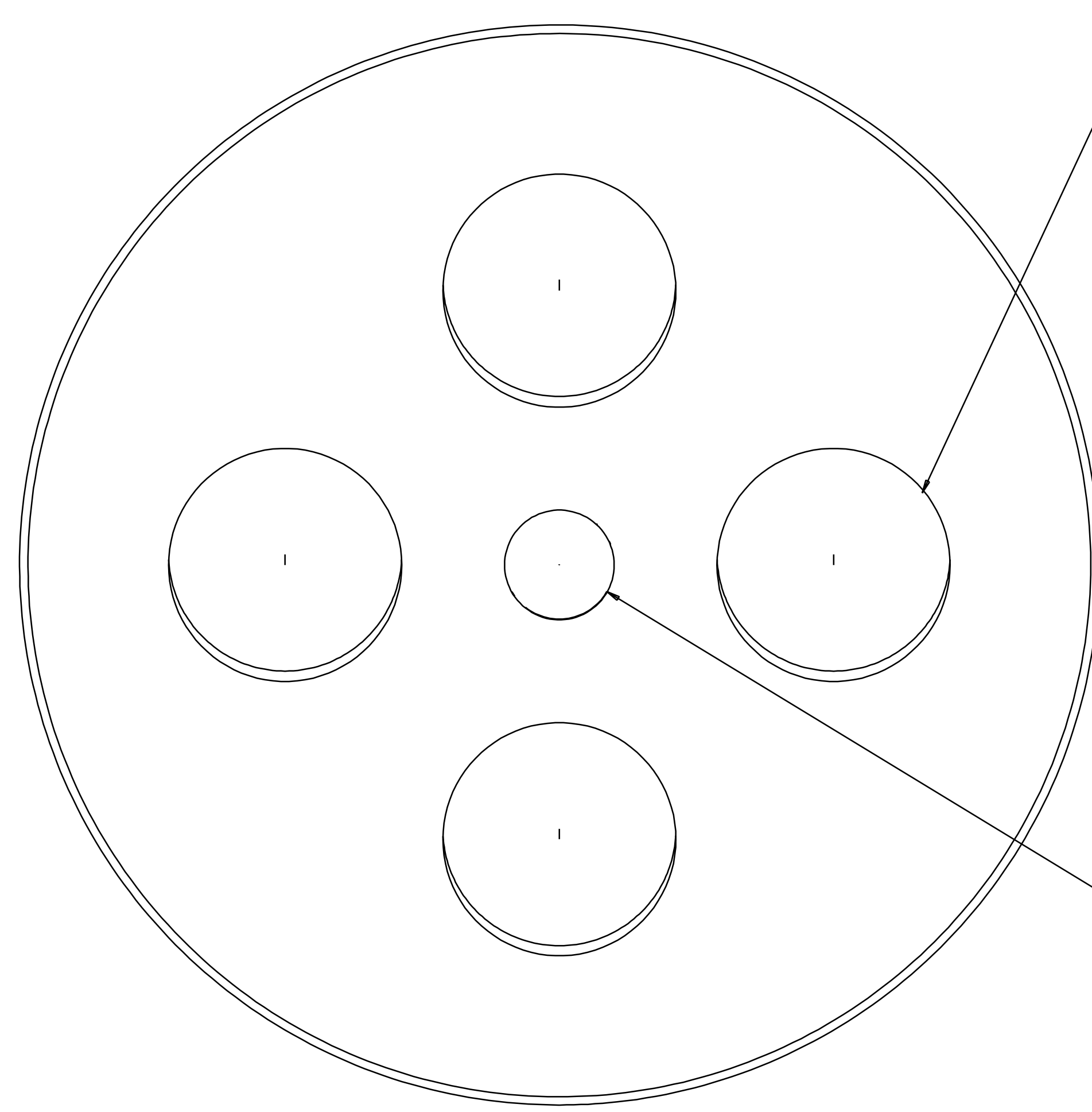
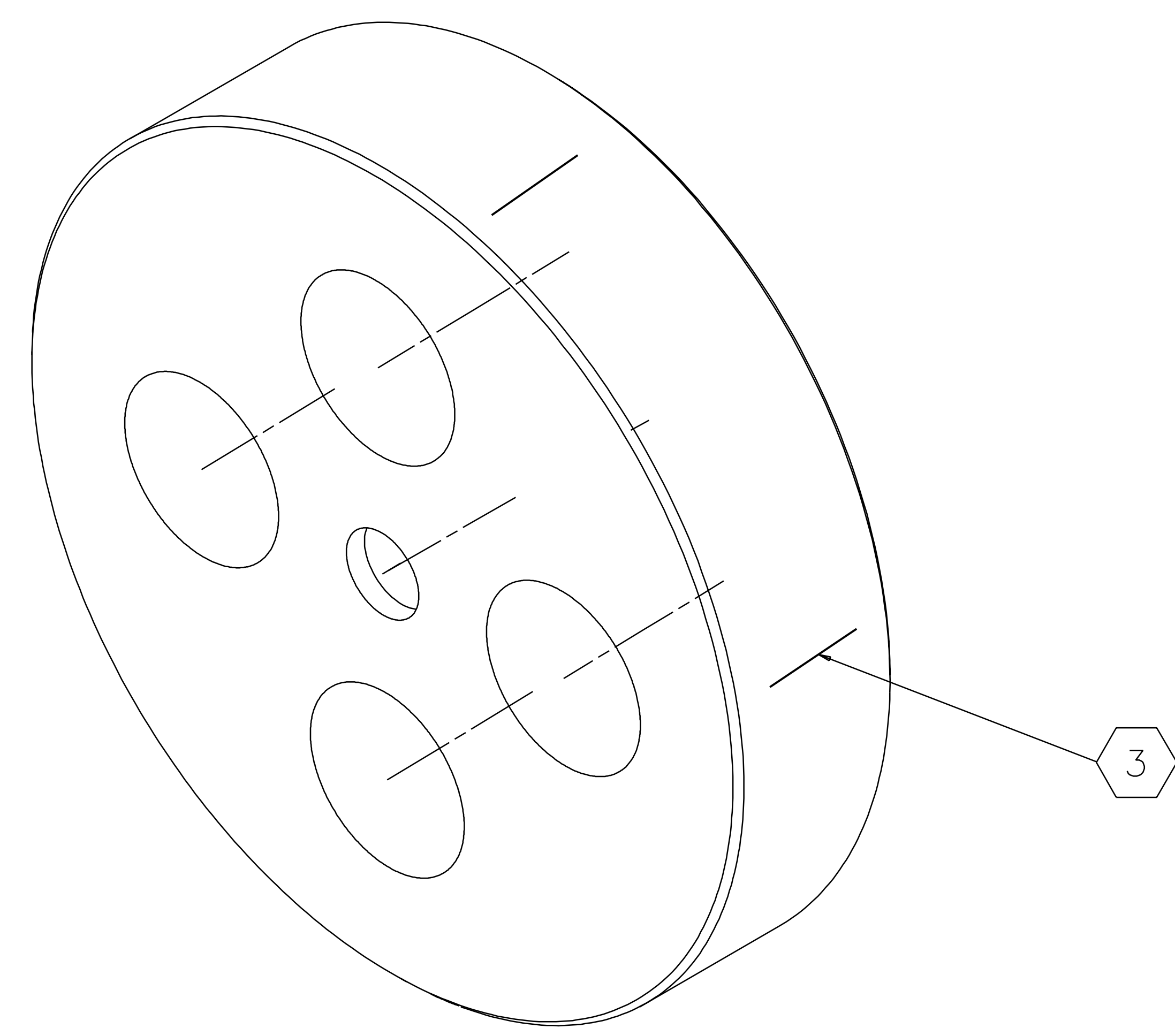
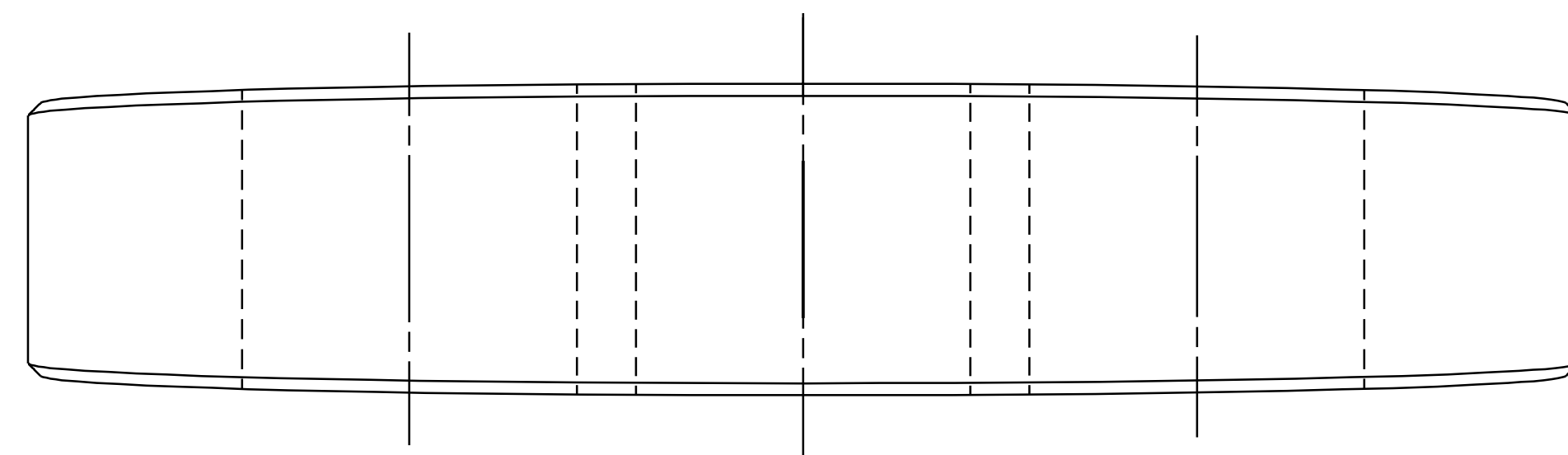


1 2 3 4 5 6 7 8

NOTES: (UNLESS OTHERWISE SPECIFIED)

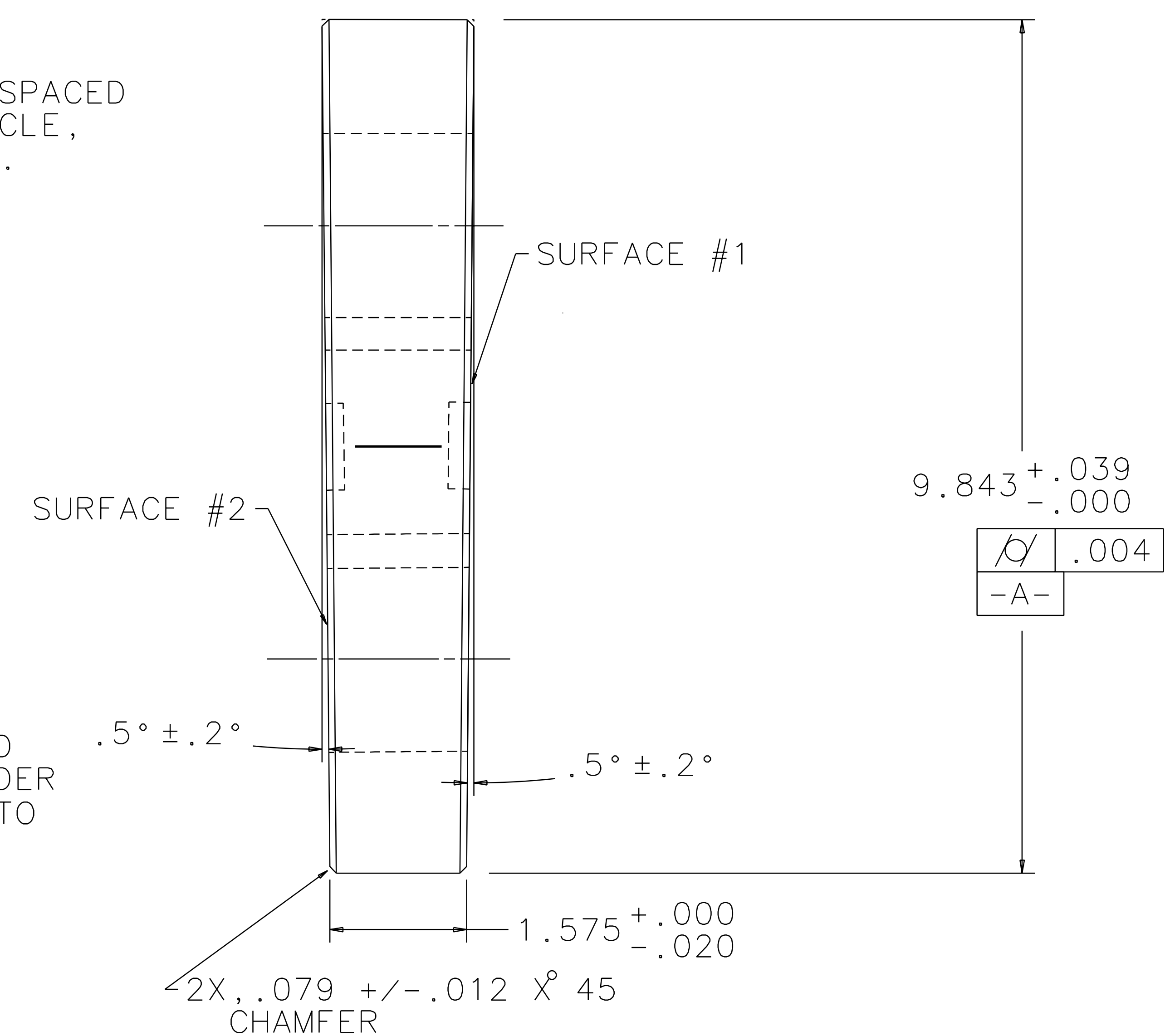
1. REMOVE SHARP EDGES AND BURRS.
2. ETCH OR SCRIBE .010 WIDE X 1.00 LONG LINE, WITH ARROW POINTING TOWARD SURFACE #1, PARALLEL TO -A- WITHIN ± 0.004 , CENTERED BETWEEN SURFACES #1 AND #2, AND AT LOCATION OF MINIMUM THICKNESS $\pm .25^\circ$ (AT THE BOTTOM OF THE TEST MASS.)
3. ETCH OR SCRIBE .010 WIDE BY 1.00 LONG, 2X, $90^\circ \pm .25^\circ$, AND 1X, $180^\circ \pm .25^\circ$, APART FROM LINE DEFINED IN 2.

REV	DATE	DRAWN BY	CHECKED	DC	DCN/DESCRIPTION
A	8/14/98	J. Romie			E980220/INITIAL RELEASE
B	9-15-98	J. Romie			E980248/ADD WEDGE INFO



4X, $\phi 2.00$, EQUALLY SPACED ON A $\phi 5.00$ BOLT CIRCLE, POSITIONED AS SHOWN.

2X, $\phi 1.000$ C'BORE, .250 DEEP, NEAR AND FAR SIDE, AT CYLINDER CENTERLINE. PERP. TO MACHINING SURFACE.



9.843 $\begin{matrix} +.039 \\ -.000 \end{matrix}$
 $\sqrt{\text{A}}$.004
-A-

2X, .079 $\pm .012$ X 45 CHAMFER

QTY REQ	PART OR IDENTIFYING NO	NOMENCLATURE OR DESCRIPTION	MATERIAL SPECIFICATION	ITEM NO.
PARTS LIST				
UNLESS OTHERWISE SPECIFIED DIMENSIONS ARE IN INCHES		APPROVALS		
TOLERANCES ARE:		DATE	LIGO CALIFORNIA INSTITUTE OF TECHNOLOGY	
FRACTIONS DECIMALS ANGLES			MASSACHUSETTS INSTITUTE OF TECHNOLOGY	
0.XX \pm 0.01		DRAWN	TITLE	
0.XXX \pm 0.005		J. Romie	8/98	LOS TEST MASS FIXTURE
ANGLES \pm 0.5 $^\circ$		CHECKED		BEAMSPLITTER
DO NOT SCALE DRAWING				
MATERIAL				
6061-T6 ALUMINUM				
FINISH				
NONE				
NEXT ASSEMBLY				
FILE LOCATION				
/home/dcc/docs/D970553.pdf				
SCALE				
1/1				
SHEET				
1 OF 1				

1 2 3 4 5 6 7 8