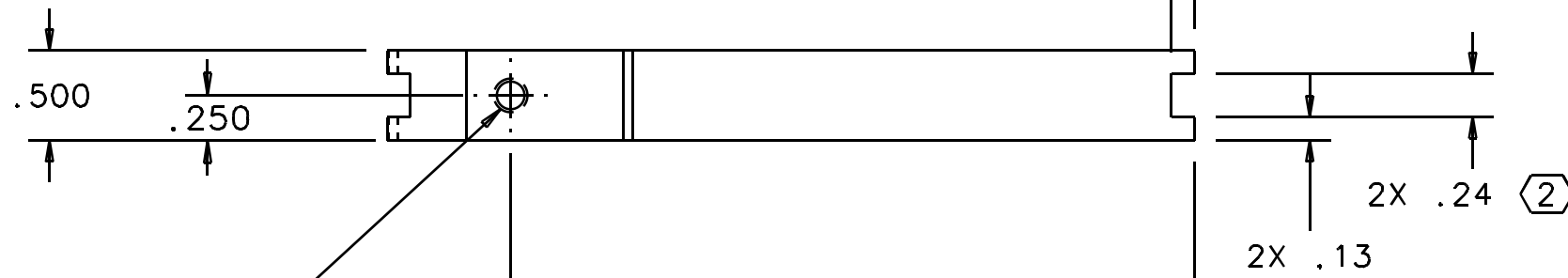


NOTES: (UNLESS OTHERWISE SPECIFIED)

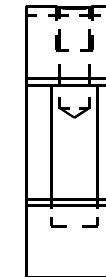
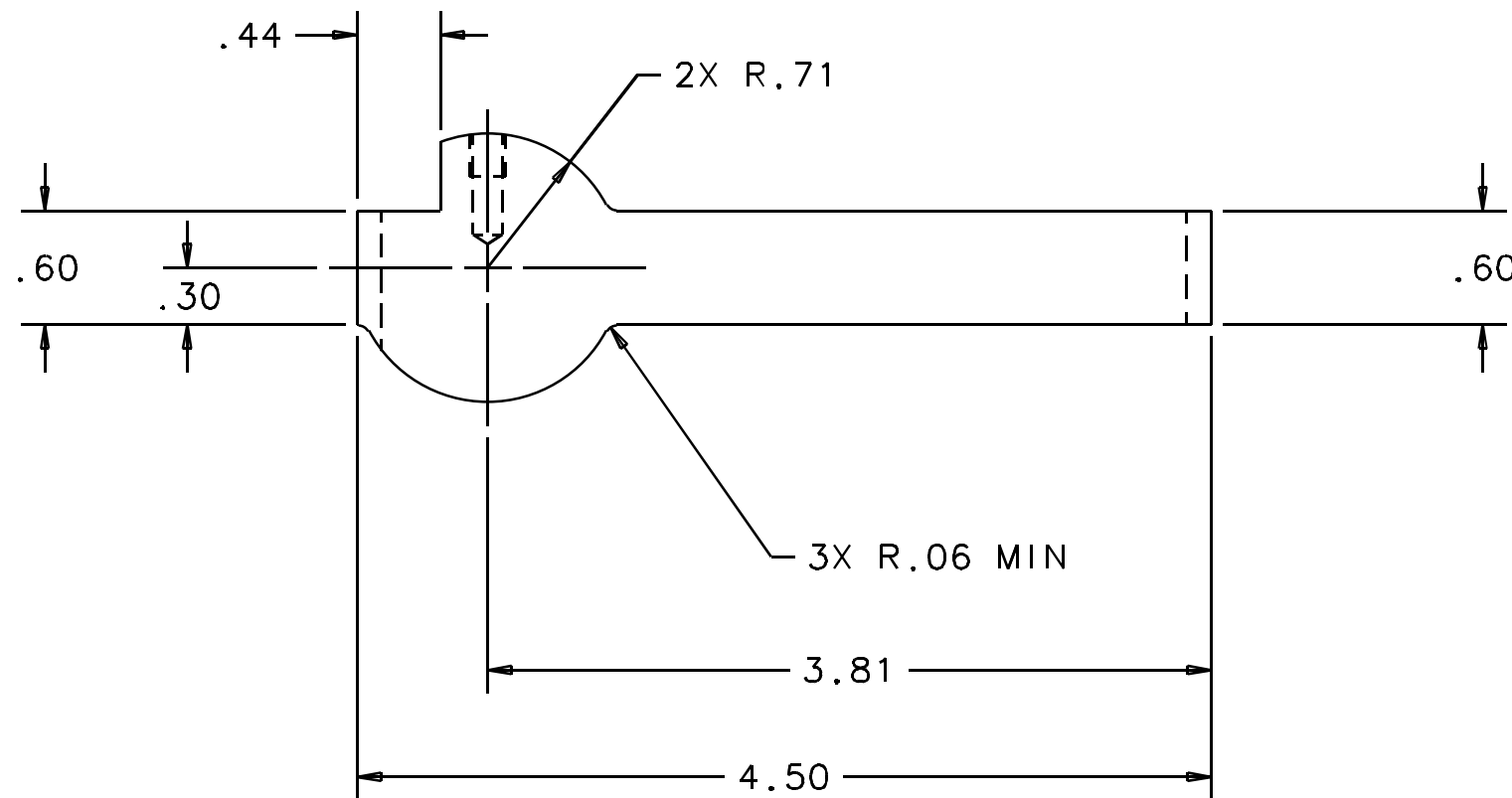
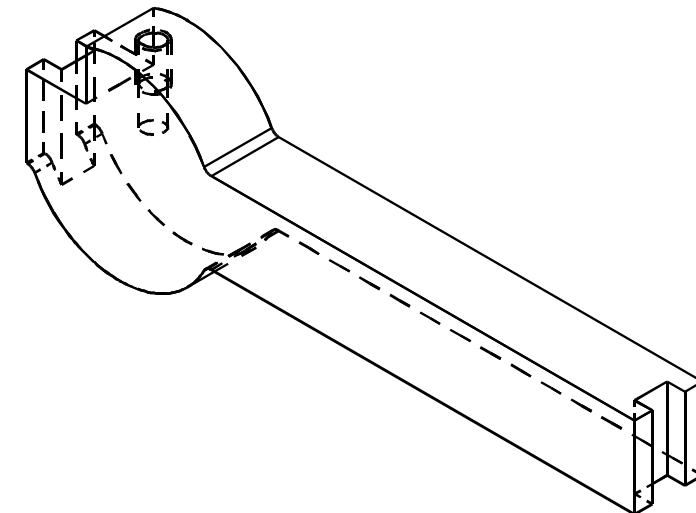
1. BREAK ALL SHARP EDGES.

2. CHAMFER INSIDE SLOT AS REQUIRED FOR WELDING ON NEXT ASSEMBLY.

REV	DATE	DRAWN BY	CHECKED	DCC	DCN/DESCRIPTION
A	8/28/98	C. Conley			E980218-00/INITIAL RELEASE



#10-32 UNC-2B  
 √ 82°-100° X  $\phi$ .25±.01  
 ▽ .23 MIN



QTY	REQD	FSCM	PART OR IDENTIFYING NO	PART	NOMENCLATURE OR DISCRPTION	MATERIAL SPECIFICATION	ITEM NO
-	-	-	-	-	-	304 STAINLESS STEEL	-
PARTS LIST							
DRWN	C. Conley	DATE	8/28/98	CALIFORNIA INSTITUTE OF TECHNOLOGY MASSACHUSETTS INSTITUTE OF TECHNOLOGY <b>LIGO PROJECT</b>			
CHKD				1-Deas CAD file: D970557_A.dwg dcc file: D970557-A.pdf			
ENGR				TITLE <b>LOS3 SENSOR/ACTUATOR BRACKET, SIDE</b>			
APPD				DIMENSION UNITS ARE inch (mm) TOLERANCES ARE: X.XXX: ± 0.005 X.XX: ± 0.01 ANGLES: ±0.5°			
NEXT ASSEMBLY: D970508				SCALE: 1/1	SIZE	DRAWING NUMBER	SHEET
				B	D970557-A-D		1 OF 1