

REVISIONS	BY

LANDSCAPE PLAN

LEGEND

SYM	SIZE DESCRIPTION	COMMENTS
⊕	2-3 Man Outcrop Rock	Angular Basalt
□	Bench	
~	Salmon Rock Path	
⊙	Sod Lawn	
⊞	Washed Rock Mulch	
○	6-8" Smooth Sumac	Multi-stem
○	6-8" Amelanchier Cherry	Multi-stem
○	2" cal Red Jade Crabapple	Matched
⊙	5-6" Hollywood Juniper	
⊙	5-6" Austrian Pine	
MGL	4-6" Moonglow Juniper	
DSP	30" Dwarf Scotch Pine	
MP	#5 Mugo Pine	
OG	#2 Compact Oregon Grape	
D	#3 Garland Daphne	
BW	#5 Wintergem Boxwood	
BYS	#2 Bridal Veil Spiraea	
RR	#2 Rugosa Rose	
BB	#5 Butterfly Bush	
FI	#5 Border Forsythia	
P	#2 Gold Potentilla	
AW	#5 Arctic Willow	
RD	#2 Redwing Dogwood	
YD	#2 Yellowwing Dogwood	
RGB	#2 Rose Glow Barberry	
CPB	#2 Crimson Piny Barberry	
H	#1 Heather	
BF	#1 Blue Fescue	
BOG	#1 Basket of Gold	
YAR	#1 Yarrow	
Y	#5 Yucca	
PHL	#1 Creeping Phlox	
LAV	#1 Lavender	
SAL	#1 Salvia	
COT	#1 Lowfast Cotoneaster	
THY	4" Mother of Thyme	
SS	#1 Snow in Summer	

ENTRY SIGN PLANTING (1 LOCATION)

- (1) DSP
- (3) MP
- (6) P
- (2) BB
- (6) RGB
- (6) COT
- (15) BF
- (6) LAV

PLANTINGS-GROUP # 1 (8 LOCATIONS)

- (1) DSP
- (3) BYS
- (3) BOG
- (6) BF
- (9) COT

PLANTINGS-GROUP # 2 (17 LOCATIONS)

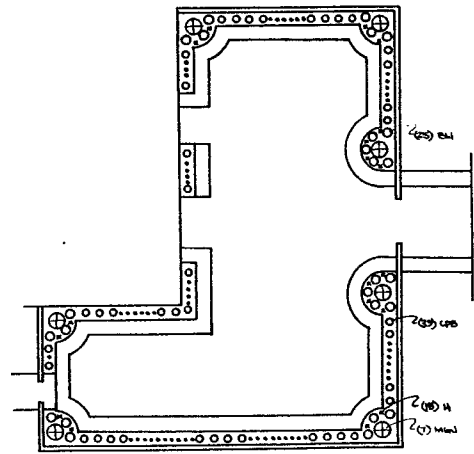
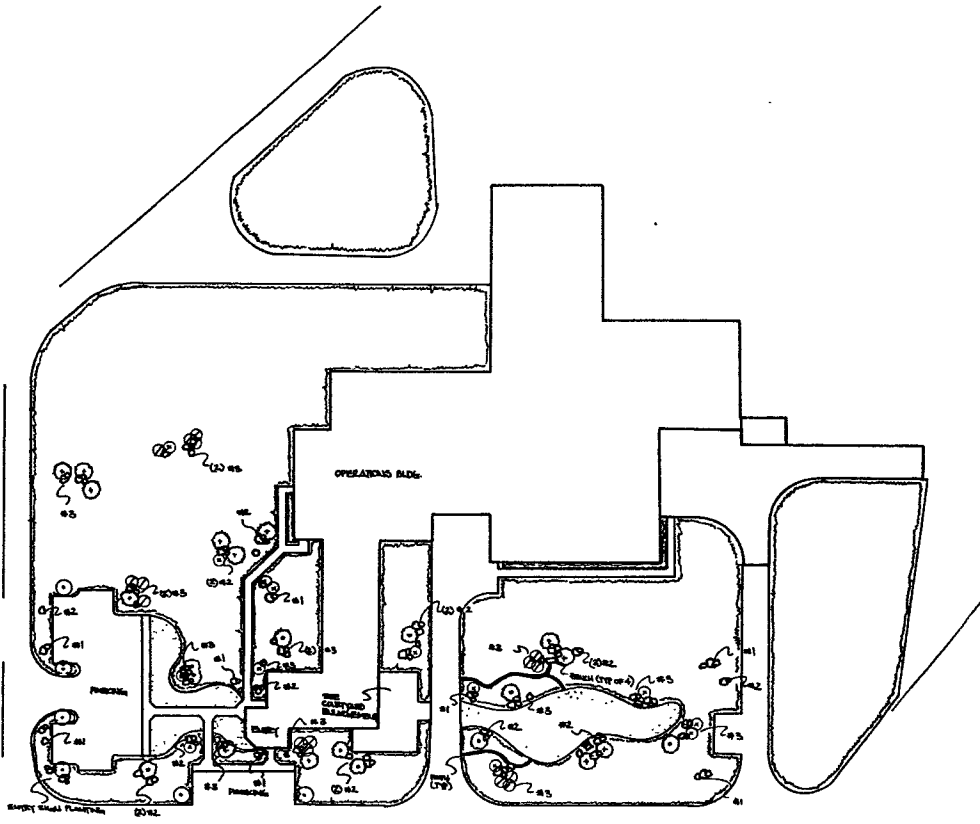
- (3) MP
- (2) BB
- (6) RR
- (6) YAR
- (1) Y
- (9) THY

PLANTINGS-GROUP # 3 (16 LOCATIONS)

- (6) OG
- (2) FI
- (6) P
- (3) LAV
- (6) PHL
- (3) SS

ADDITIONAL IN-FILL PLANTINGS

- (24) D
- (15) AW
- (18) RD
- (18) YD
- (24) SAL



NOTES

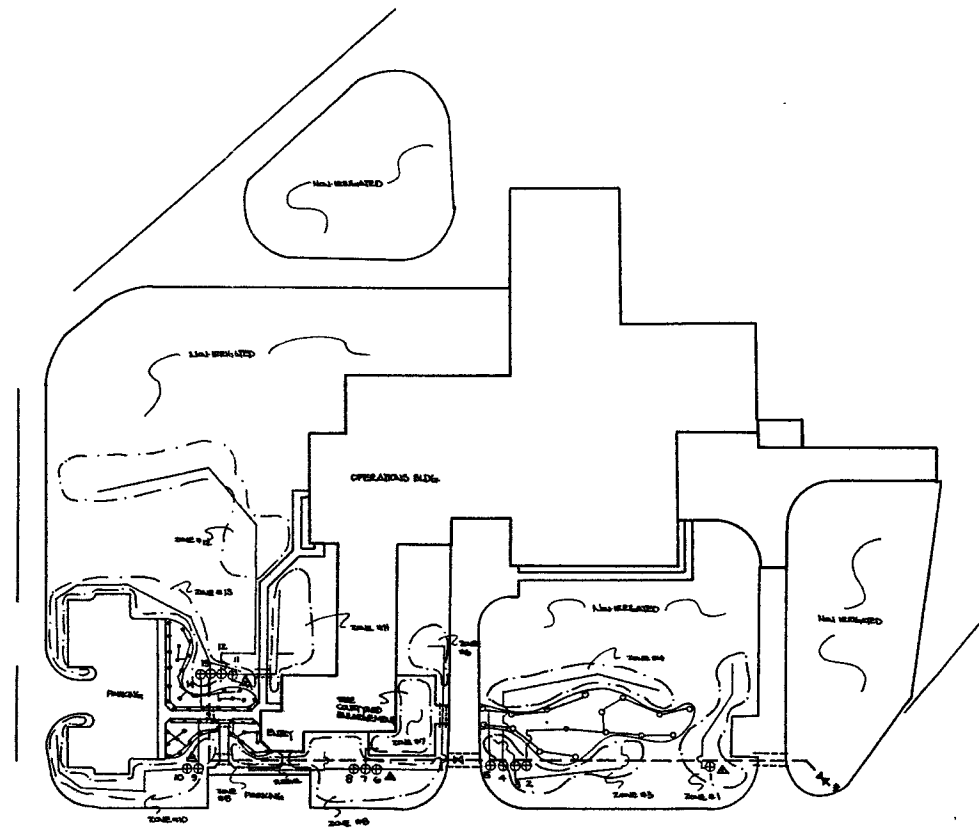
- Finish grade and shape existing site soils, as provided by in place to +/- 1 feet by others.
- Provide and install outcropping rock, as shown with typical burial depth of approximately 1/3 the size of the boulder.
- Provide weed barrier fabric and a 3" lift of washed rock mulch in all planting bed areas.
- Provide weed barrier fabric, 4"x6" concrete landscape border, and a 3" lift of salmon rock mulch for foot path areas.
- Provide 4" x 6" concrete landscape border for all planting bed/lawn interfaces.
- Plantings will be provided in groupings as noted for each outcropping area. All plant materials are to be installed utilizing organic amendment (approximately 1:3 of the backfill mix), fertilizer tablets, tree staking (minimum 2 stakes per tree) and tree trunk wrapping for single stem trees.
- Lawn areas are sod lawn.

P970580
Pg. 1 of 2

LIGO



Date	082897
Scale	As Shown
Drawn	ML
Job	
Sheet	L-2
Of	2 Sheets



LEGEND

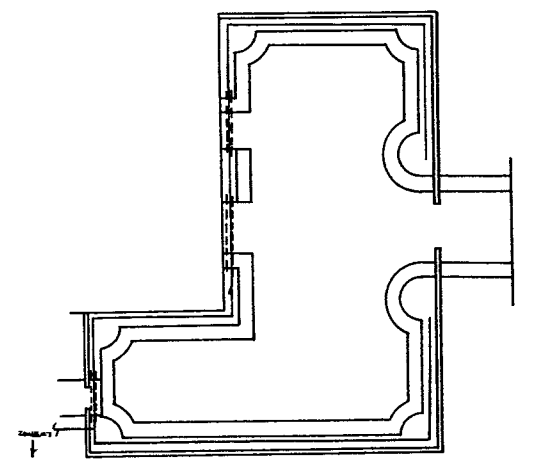
- # Point of Connection, 2" Class 200 PVC Stub-out (by others), with 2" Brass Ball Valve and a 2" Sontag Wye Filter
- ☐ Rambird ESP16-MC Controller
- 2" Class 200 PVC Mainline
- Class 200 PVC Lateral Piping
- - - Class 200 PVC Sleeving (by others)
- ⊠ 2" Brass Ball Valve
- ▲ Rambird 33DRC Quick Coupling Valve
- ⊙ Rambird PESB Automatic Control Valve
- Drip Zone Area of Coverage
- Hunter I-20-ADJ Stainless (turf rotor)
- Rambird 1804SAM (turf spray)

VALVE SCHEDULE

# 1	1" drip
# 2	1" turf rotor
# 3	1" drip
# 4	1" drip
# 5	1" turf rotor
# 6	1" drip
# 7	1" drip
# 8	1" drip
# 9	1 1/2" turf spray
# 10	1" drip
# 11	1" drip
# 12	1" drip
# 13	1" drip
# 14	1 1/2" turf spray

NOTES

- 2" Class 200 mainline stub-out is to be provided by others from the source water connection, to the point of connection as shown on the drawings
- Irrigation design is based on the water source (by others) providing 50
- 2" Class 200 conduit with pull string is to be provided by others from the controller location to the point of connection as shown on the drawings
- Drawing is diagrammatic. All new valves, piping and appurtenances are to be installed within planting areas
- All piping is to be installed to the minimum depth (cover over pipe) Sleeving (24"), Mainline (18"), Lateral and PVC Drip Distribution (12") and 1 1/2" Drip Tube (above weed barrier fabric/below rock mulch)
- All lateral piping is to be installed in accordance with the following pipe sizing requirements: 0-12 GPM-3/4" / 12-24 GPM-1" / 24-36 GPM-1 1/4" / 36-48 GPM-1 1/2" / 48-60 GPM-2"
- Turf heads are to be installed to finish grade utilizing triple swing joint construction for rotor heads and flex-pipe assembly for spray heads



LIGO-D970580
080616-0917
Pg 2 of 2