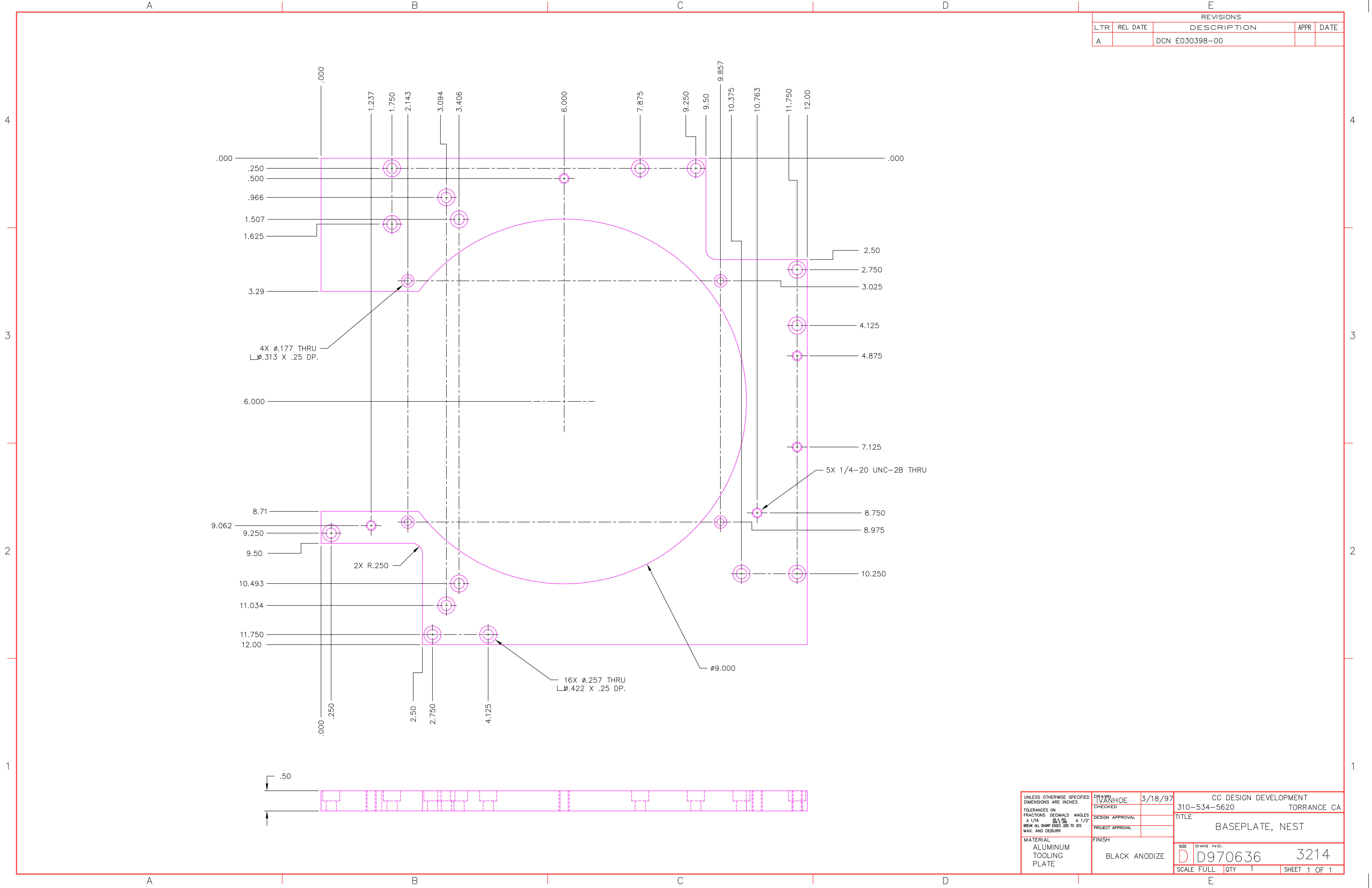


REVISIONS				
LTR	REL DATE	DESCRIPTION	APPR	DATE
A		DCN E030398-00		



4X ϕ .177 THRU
 \perp ϕ .313 X .25 DP.

2X R.250

16X ϕ .257 THRU
 \perp ϕ .422 X .25 DP.

5X 1/4-20 UNC-2B THRU

UNLESS OTHERWISE SPECIFIED DIMENSIONS ARE INCHES TOLERANCES ON FRACTIONS DECIMALS ANGLES \pm 1/16 \pm .005 \pm 1/2" BREAK ALL SHARP EDGES .005 TO .015 MAX. AND DEBURR	DRAWN IVANHOE	3/18/97	CC DESIGN DEVELOPMENT 310-534-5620 TORRANCE CA	
	CHECKED		TITLE BASEPLATE, NEST	
MATERIAL ALUMINUM TOOLING PLATE	FINISH BLACK ANODIZE	SIZE D	DWG NO. D970636	3214
SCALE FULL		QTY 1	SHEET 1 OF 1	