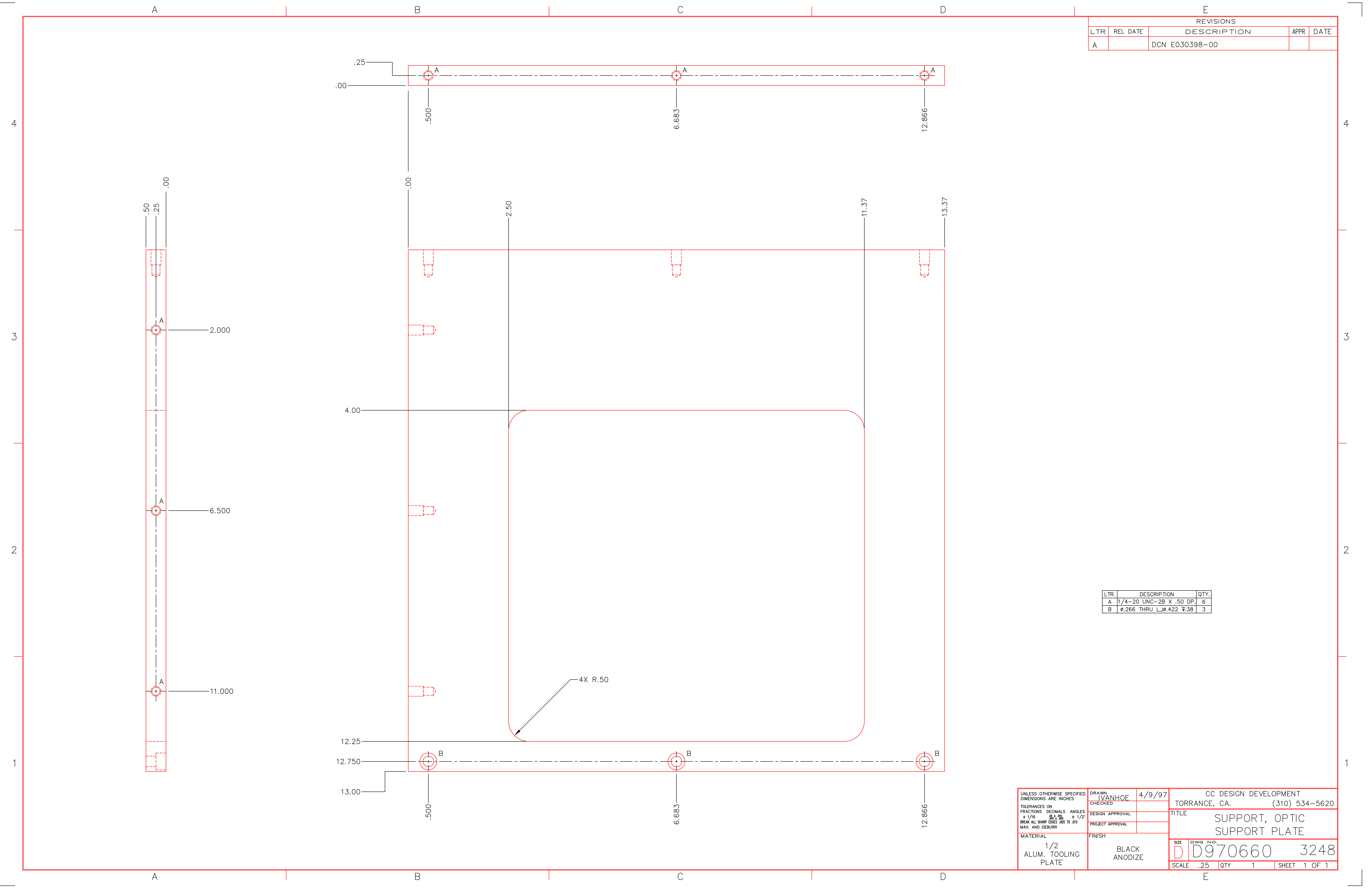


REVISIONS				
LTR	REL DATE	DESCRIPTION	APPR	DATE
A		DCN E030398-00		



LTR.	DESCRIPTION	QTY.
A	1/4-20 UNC-2B X .50 DP	6
B	Ø.266 THRU L#422 F.38	3

UNLESS OTHERWISE SPECIFIED DIMENSIONS ARE INCHES TOLERANCES ON FRACTIONS DECIMALS ANGLES ± 1/16 ± .001 ± 1/2° BREAK ALL SHARP EDGES .005 TO .015 MAX. AND DEBURR	DRAWN IVANHOE	4/9/97	CC DESIGN DEVELOPMENT TORRANCE, CA. (310) 534-5620	
	CHECKED		TITLE SUPPORT, OPTIC SUPPORT PLATE	
MATERIAL 1/2 ALUM. TOOLING PLATE	DESIGN APPROVAL		SIZE D	DWG NO. D970660
	PROJECT APPROVAL		SCALE .25	QTY 1
	FINISH BLACK ANODIZE		SHEET 1	OF 1