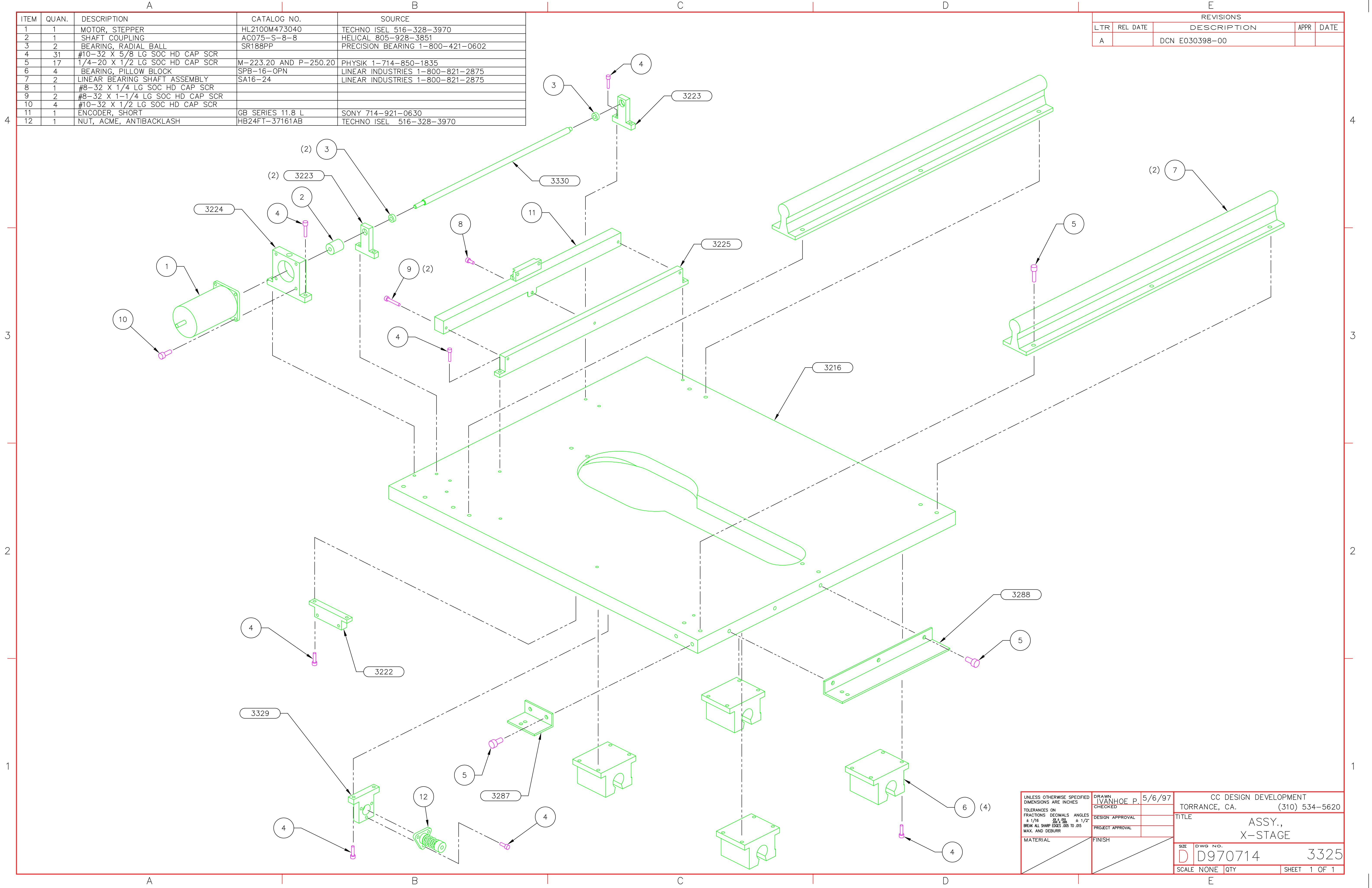


ITEM	QUAN.	DESCRIPTION	CATALOG NO.	SOURCE
1	1	MOTOR, STEPPER	HL2100M473040	TECHNO ISEL 516-328-3970
2	1	SHAFT COUPLING	AC075-S-8-8	HELICAL 805-928-3851
3	2	BEARING, RADIAL BALL	SR188PP	PRECISION BEARING 1-800-421-0602
4	31	#10-32 X 5/8 LG SOC HD CAP SCR		
5	17	1/4-20 X 1/2 LG SOC HD CAP SCR	M-223.20 AND P-250.20	PHYSIK 1-714-850-1835
6	4	BEARING, PILLOW BLOCK	SPB-16-OPN	LINEAR INDUSTRIES 1-800-821-2875
7	2	LINEAR BEARING SHAFT ASSEMBLY	SA16-24	LINEAR INDUSTRIES 1-800-821-2875
8	1	#8-32 X 1/4 LG SOC HD CAP SCR		
9	2	#8-32 X 1-1/4 LG SOC HD CAP SCR		
10	4	#10-32 X 1/2 LG SOC HD CAP SCR		
11	1	ENCODER, SHORT	GB SERIES 11.8 L	SONY 714-921-0630
12	1	NUT, ACME, ANTIBACKLASH	HB24FT-37161AB	TECHNO ISEL 516-328-3970

REVISIONS			
LTR	REL DATE	DESCRIPTION	APPR DATE
A		DCN E030398-00	



UNLESS OTHERWISE SPECIFIED DIMENSIONS ARE INCHES TOLERANCES ON FRACTIONS DECIMALS ANGLES ± 1/16 ± .005 ± 1/2° BREAK ALL SHARP EDGES .005 TO .015 MAX. AND DEBURR	DRAWN	I.VANHOE P.	5/6/97	CC DESIGN DEVELOPMENT TORRANCE, CA. (310) 534-5620 TITLE ASSY., X-STAGE SIZE D DWG NO. D970714 3325 SCALE NONE QTY SHEET 1 OF 1
	CHECKED			
	DESIGN APPROVAL			
	PROJECT APPROVAL			
MATERIAL	FINISH			