

8

7

6

5

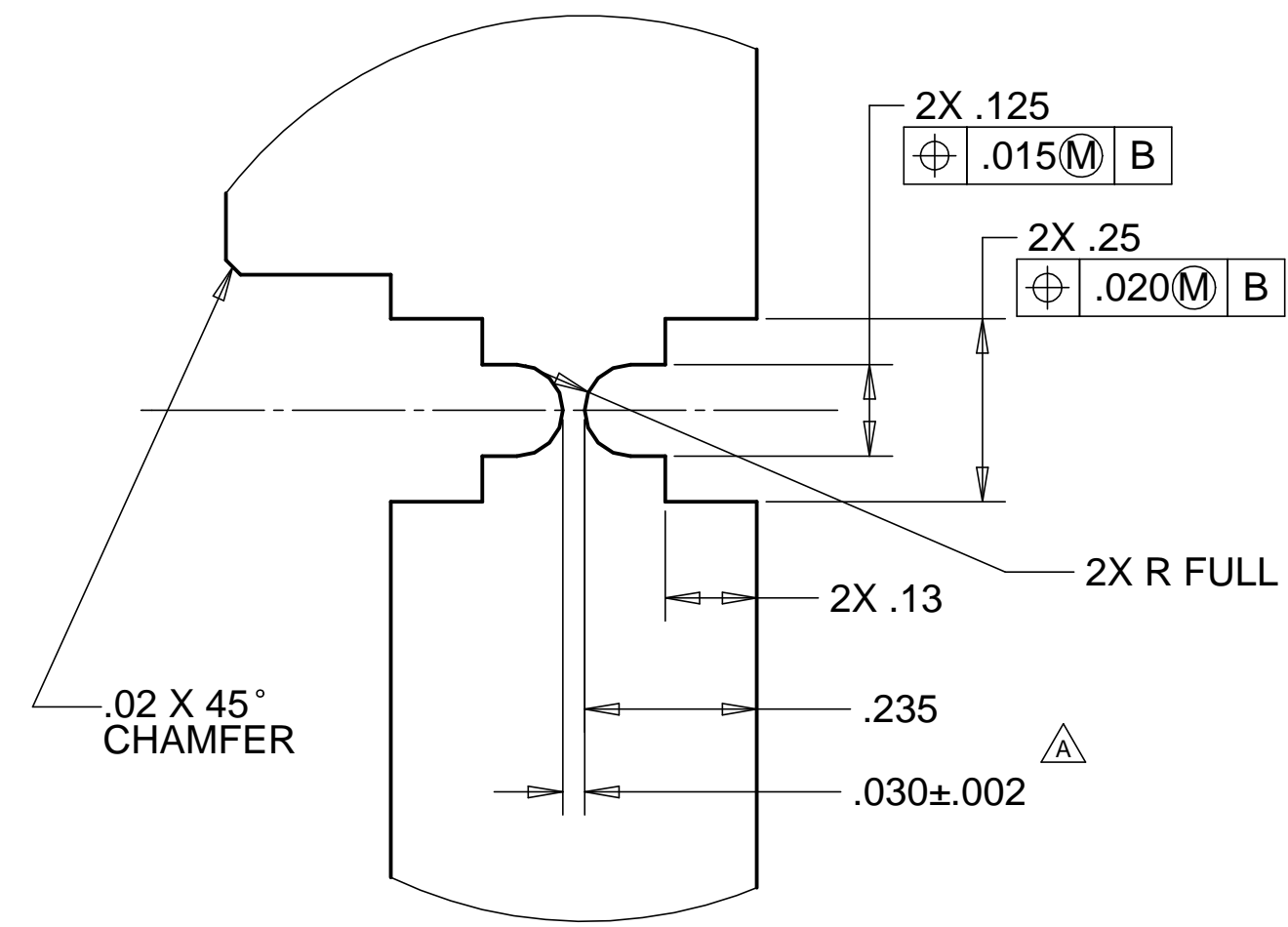
4

3

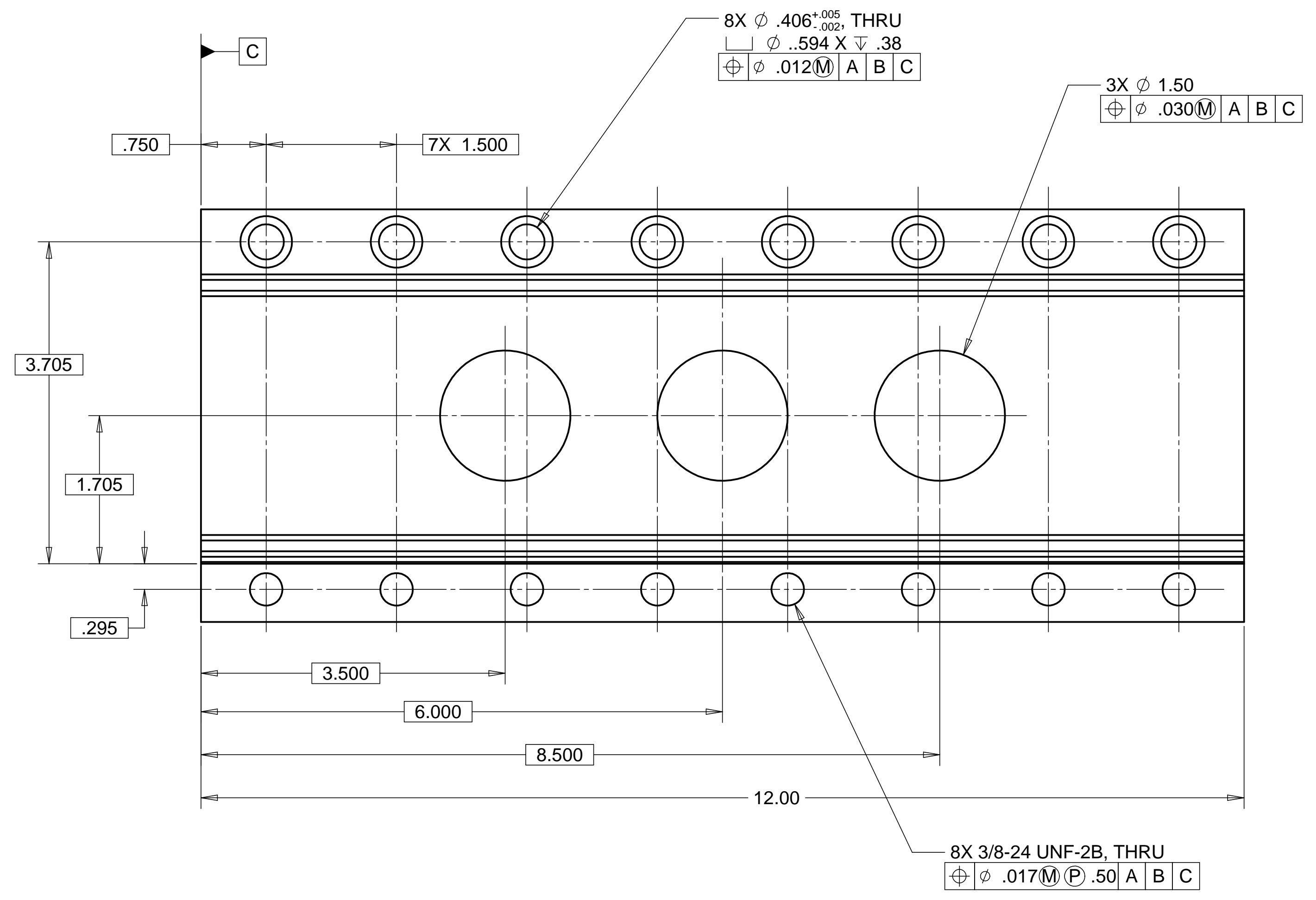
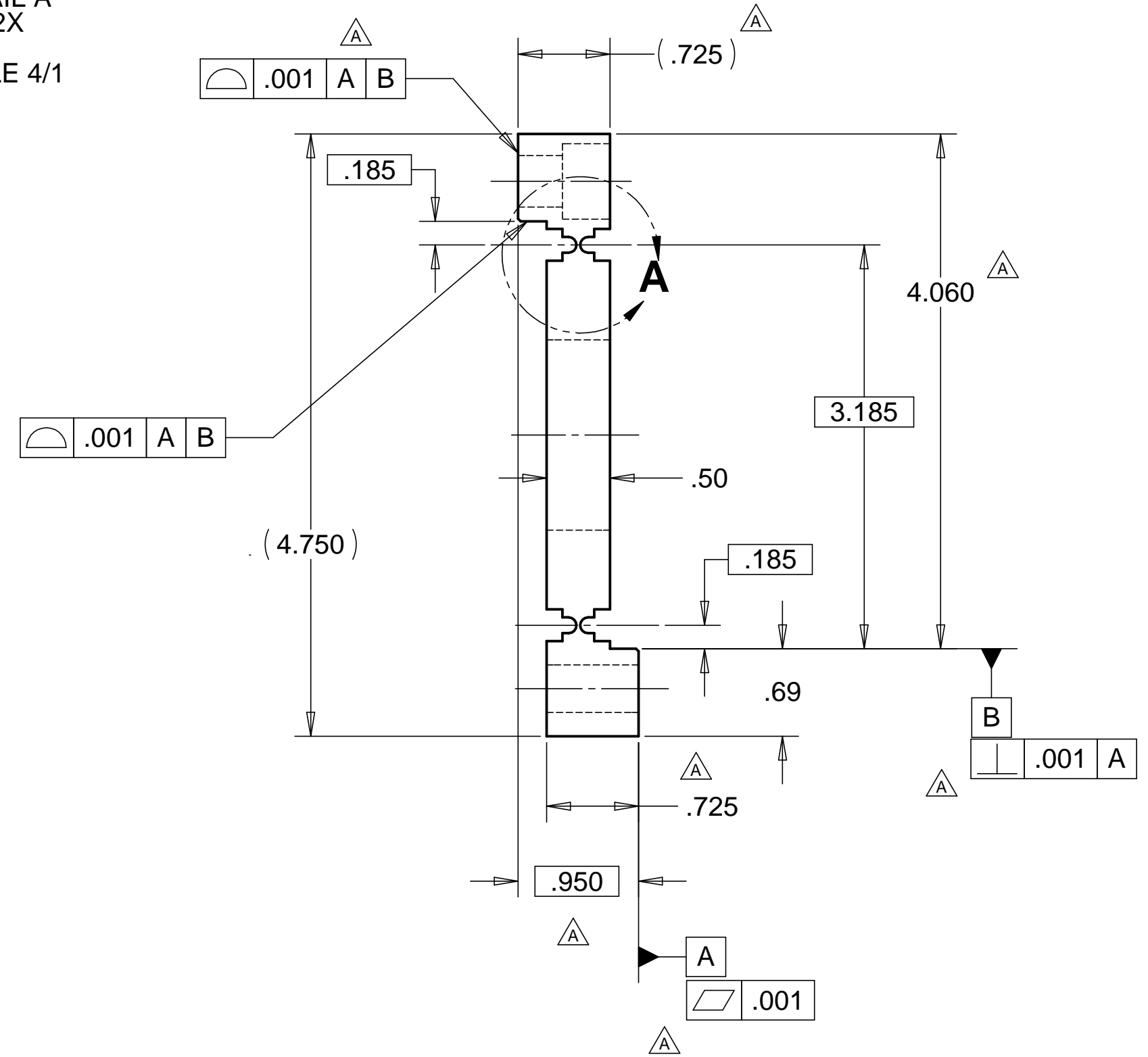
2

1

REVISIONS			
REV.	DESCRIPTION	DATE	APPROVED
A	SEE ECN# D972112-A FOR CHANGE LIST	05-14-98	T. THOMPSON



DETAIL A
TYP 2X
SCALE 4/1



NOTES: UNLESS OTHERWISE SPECIFIED

1. ALL DIMENSIONS IN INCHES
2. DIMENSIONS AND TOLERANCING PER ANASI Y14.5M-1994
3. SURFACE TEXTURE PER ANI/ASME B 46.1-1985
4. REMOVE ALL BURRS AND BREAK SHARP EDGES TO A MAXIMUM OF .015
5. ALL INSIDE CORNERS TO BE .015 RADIUS MAX
6. COUNTERSINK 82 DEGREES ALL TAPPED HOLES TO MAJOR DIAMETER
7. COUNTERSINK 82 DEGREES APPROXIMATELY .03/.06 DEEP ALL DRILLED HOLES
8. PARTS TO BE THOROUGHLY CLEANED TO REMOVE ALL OIL, GREASE, DIRT AND CHIPS
9. PART NUMBER (DRAWING NO. PLUS DASH NO. PLUS SERIAL NO.) TO BE CLEARLY MARKED ON THE PART ITSELF.

MATL: 17-4PH STAINLESS STEEL - H900
WEIGHT: 7.6 lbs.

PARTS LIST			
UNLESS OTHERWISE SPECIFIED: DIMENSIONS ARE IN INCHES -TOLERANCES-		CAD GENERATED DRAWING, DO NOT MANUALLY UPDATE DO NOT SCALE DRAWING	
DECIMALS ANGULAR = +/- .30° .X = +/- .1 .XX = +/- .03 .XXX = +/- .010 SURFACE FINISH = 250		TITLE HYTEC, INC LIGO FINE X TRANSLATION FLEXURE - B	
FINISH	DESIGNED ROGER L. SMITH	SIGNATURE ROGER L. SMITH	DATE 10-22-97
PART NO. D972112-1	CHECKED HARRY SALAZAR	ENGR. ERIC PONSLET	DATE 11-28-97
	APPROVED T. THOMPSON	DATE 12-01-97	DATE 11-21-97
	DWG. NO. D972112		SIZE SHEET NO. D 1 of 1
SCALE 1/1		REVISION A	

8

7

6

5

4

3

2

1