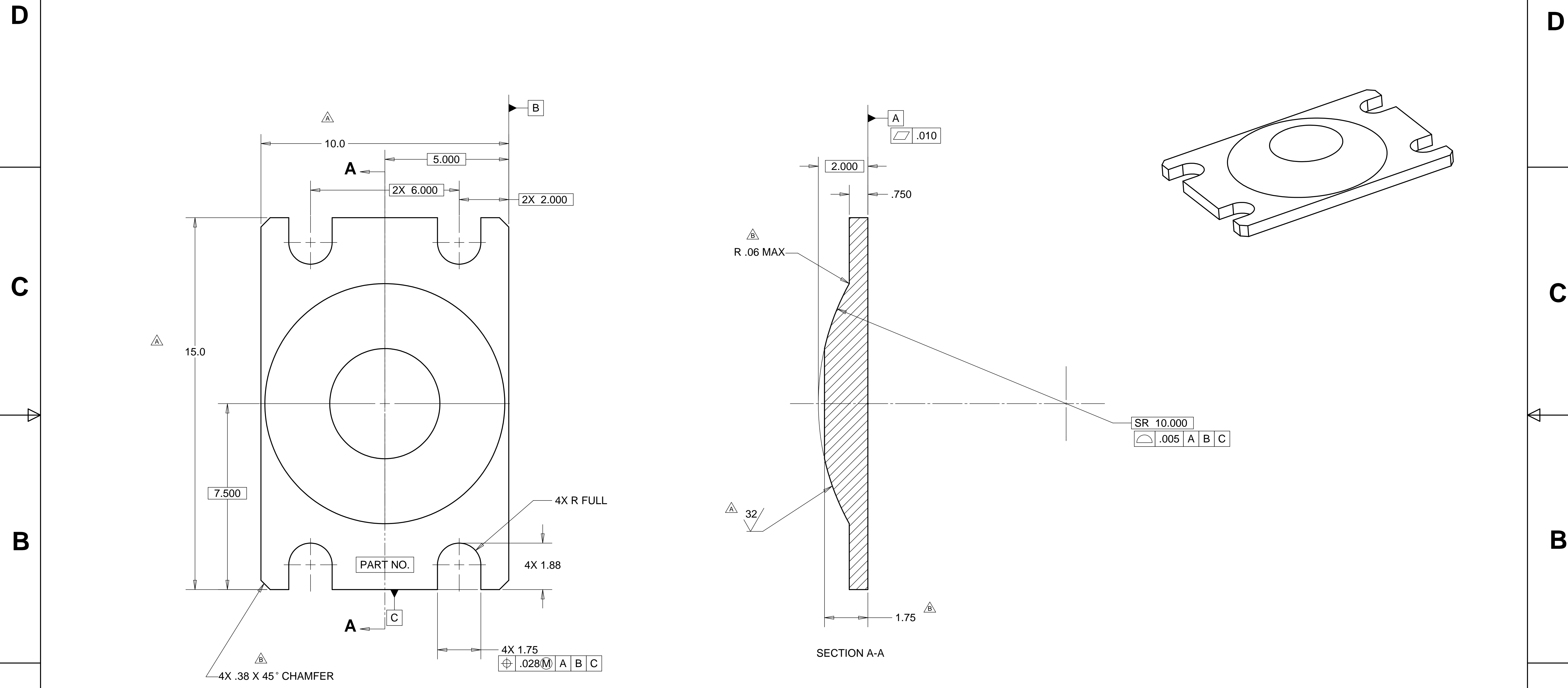


8 7 6 5 4 3 2 1

REVISIONS			
REV.	DESCRIPTION	DATE	APPROVED
A	SEE ECN# D972123-A FOR CHANGE LIST	11-03-97	T. THOMPSON
B	SEE ECN# D972123-B FOR CHANGE LIST	01-16-98	T. THOMPSON



MATL: LOW CARBON STEEL  
 COATING: HI-T-LUBE, MAGNAPLATE INC.

WEIGHT: 42.8 lbs.

NOTES: UNLESS OTHERWISE SPECIFIED

1. ALL DIMENSIONS IN INCHES
2. DIMENSIONS AND TOLERANCING PER ASME Y14.5M-1994
3. SURFACE TEXTURE PER ANSI/ASME B 46.1-1985
4. REMOVE ALL BURRS AND BREAK SHARP EDGES TO A MAXIMUM OF .015
5. ALL INSIDE CORNERS TO BE .015 RADIUS MAX
6. COUNTERSINK 82 DEGREES ALL TAPPED HOLES TO MAJOR DIAMETER
7. COUNTERSINK 82 DEGREES APPROXIMATELY .015 DEEP ALL DRILLED HOLES
8. PARTS TO BE THOROUGHLY CLEANED TO REMOVE ALL OIL, GREASE, DIRT AND CHIPS
9. PART NUMBER (DRAWING NO. PLUS DASH NO. PLUS SERIAL NO.) TO BE CLEARLY MARKED ON THE PART.

PARTS LIST			
UNLESS OTHERWISE SPECIFIED: DIMENSIONS ARE IN INCHES -TOLERANCES-		CAD GENERATED DRAWING, DO NOT MANUALLY UPDATE DO NOT SCALE DRAWING	
DECIMALS	ANGULAR = +/- 30'	TITLE	
.X = +/- .1		HYTEC, INC	
.XX = +/- .03		LIGO BSC	
.XXX = +/- .010	SURFACE FINISH = 250	SUPPORT TUBE SPHERICAL MNT	
FINISH	SIGNATURE	DATE	DWG. NO.
	ROGER L. SMITH	5-28-97	D972123
DRAWN	ROGER L. SMITH	5-28-97	SIZE
CHECKED	HARRY SALAZAR	7-10-97	D
ENGR.	T. THOMPSON	7-10-97	SHEET NO.
APPROVED	T. THOMPSON	7-10-97	1 of 1
PART NO.	SCALE 1/2		REVISION B
D972123-1			

8 7 6 5 4 3 2 1