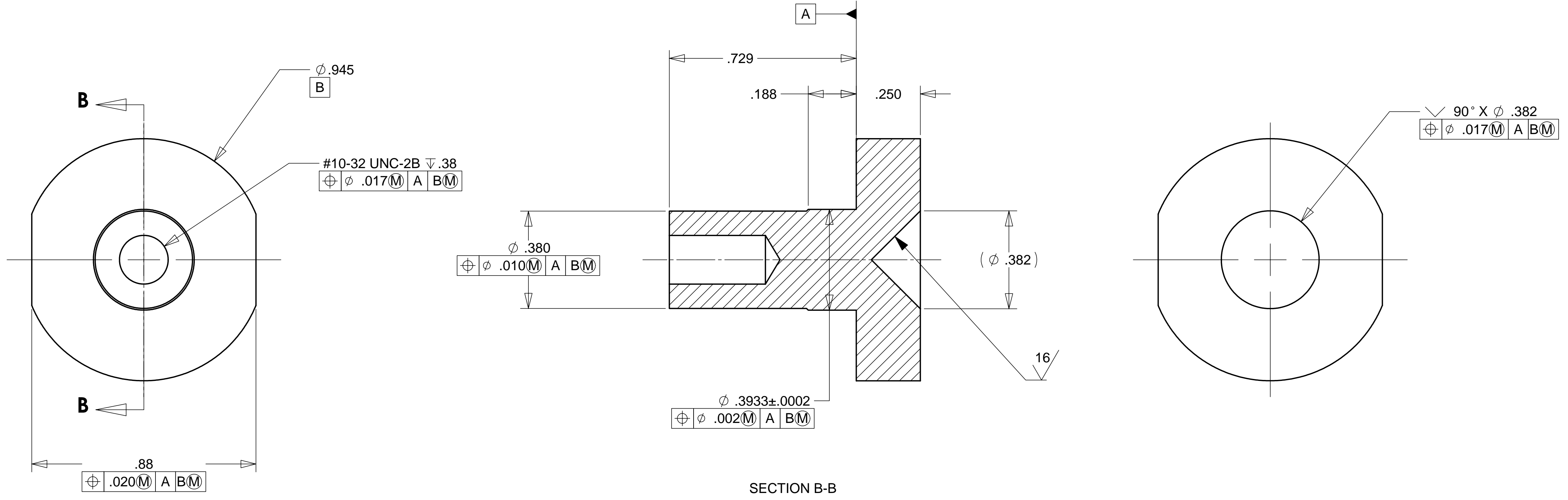


8 7 6 5 4 3 2 1

REV	DESCRIPTION	REVISIONS	DATE	APPROVED

D
C
B
A

D
C
B
A



MATERIAL: 17-4 PH SS-H900
WEIGHT: .04 POUNDS

NOTES: UNLESS OTHER WISE SPECIFIED

1. ALL DIMENSIONS IN INCHES
2. DIMENSIONS AND TOLERANCING PER ANAS1 Y14.5M-1994
3. SURFACE TEXTURE PER ANI/ASME B 46.1-1985
4. REMOVE ALL BURRS AND BREAK SHARP EDGES TO A MAXIMUM OF .015
5. ALL INSIDE CORNERS TO BE .015 RADIUS MAX
6. COUNTERSINK 82 DEGREES ALL TAPPED HOLES TO MAJOR DIAMETER
7. COUNTERSINK 82 DEGREES APPROXIMATELY .03/.06 DEEP ALL DRILLED HOLES
8. PARTS TO BE THOROUGHLY CLEANED TO REMOVE ALL OIL, GREASE, DIRT AND CHIPS
9. PART NUMBER (DRAWING NO., DASH NO., REVISION NO., SERIAL NO.) TO BE CLEARLY MARKED ON THE PART ITSELF.

ITEM NO.	QTY.	PART NO.	DESCRIPTION
PARTS LIST			
UNLESS OTHERWISE SPECIFIED: DIMENSIONS ARE IN INCHES -TOLERANCES-			HYTEC, INC
CAD GENERATED DRAWING, DO NOT MANUALLY UPDATE DO NOT SCALE DRAWING			
DECIMALS ANGULAR = +/- 30'			TITLE LIGO BEARING CONICAL SEAT
.X = +/- .1 .XX = +/- .03 .XXX = +/- .010 SURFACE FINISH = 250			
FINISH		SIGNATURE	DATE
DESIGNED		ROGER L. SMITH	1-8-99
DRAWN		H. SALAZAR	1-9-99
CHECKED		ROGER L. SMITH	1-12-99
ENGR.		ERIC PONSLER	1-8-99
APPROVED		T. THOMPSON	1-15-99
PART NO. D972154-1		DWG. NO. SIZE SHEET NO. D972154 D 1 of 1	
		SCALE 4/1	REVISION

8 7 6 5 4 3 2 1