

8

7

6

5

4

3

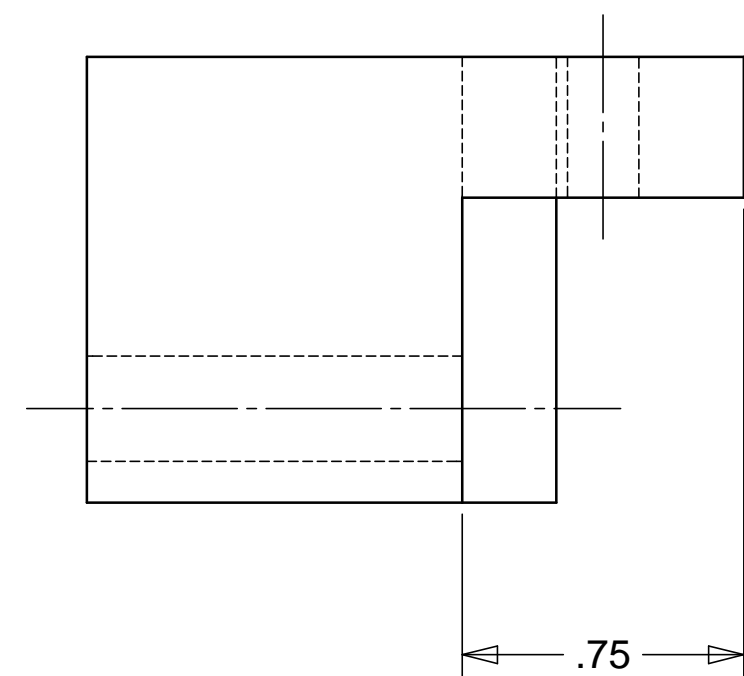
2

1

REVISIONS			DATE	APPROVED
REV	DESCRIPTION			
A	SEE ECR# D972159-A FOR CHANGE LIST		05/11/99	T. THOMPSON

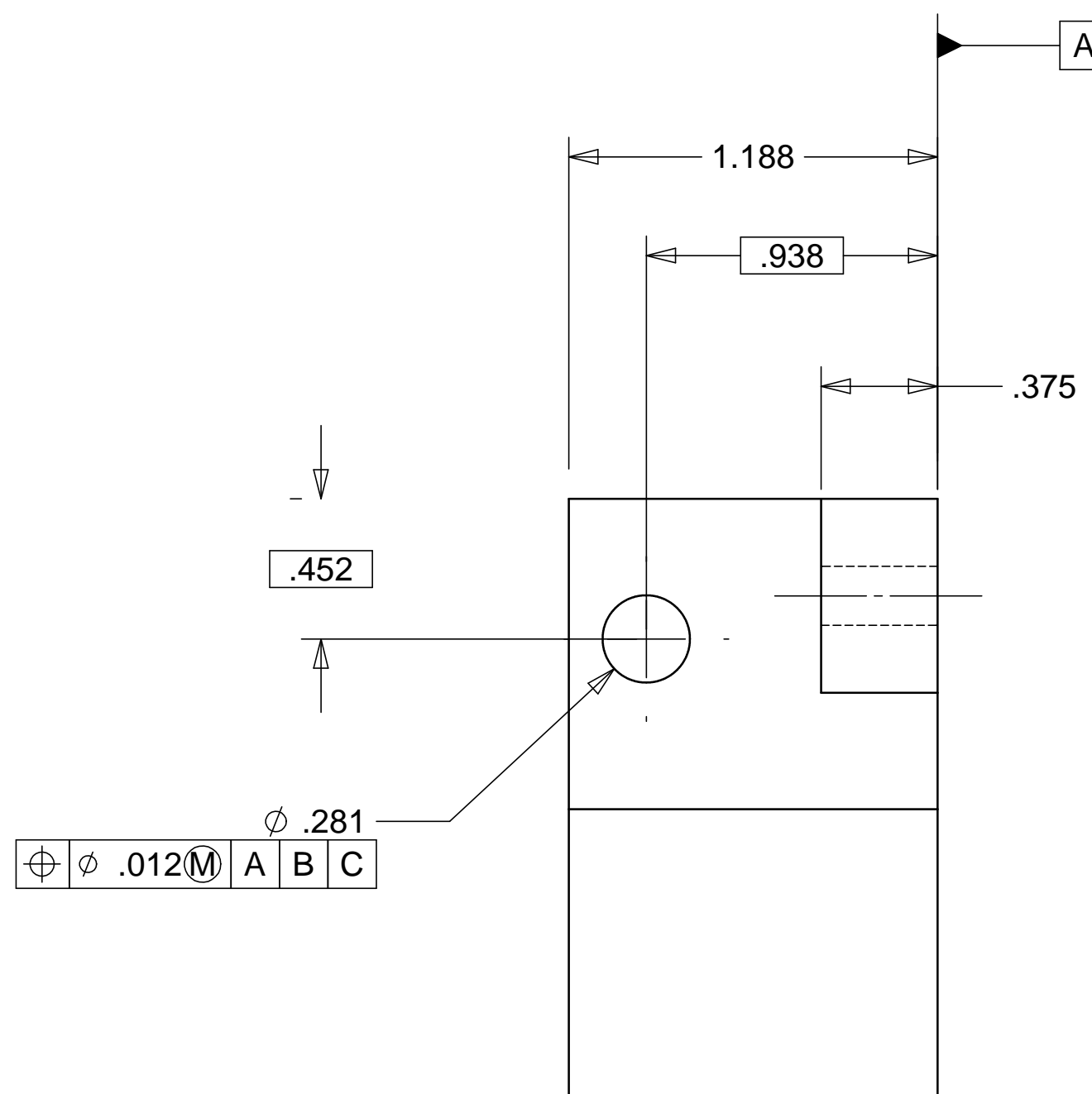
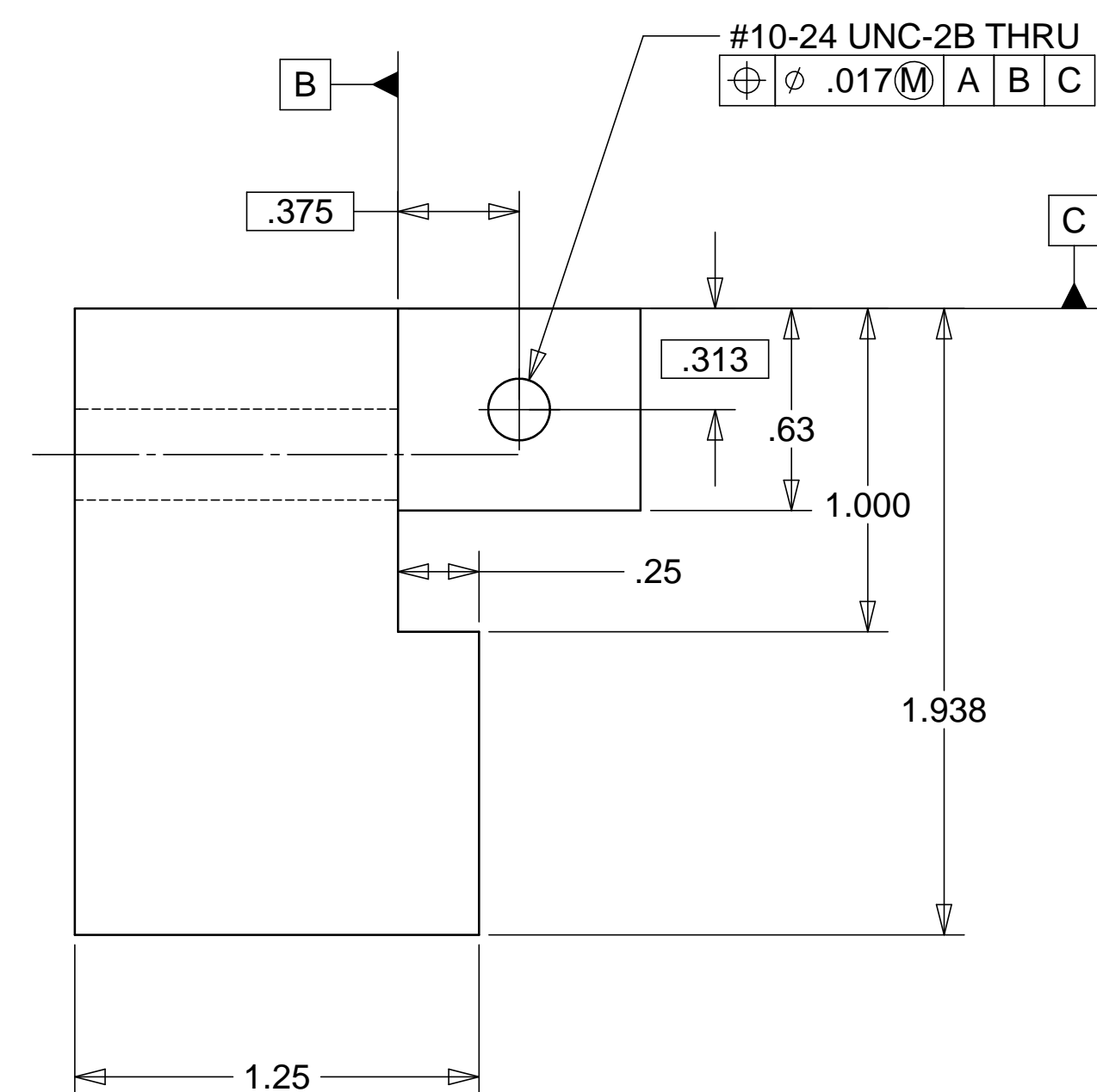
D

D



C

C



B

B

MATERIAL: ALUM. 6061

A

A

NOTES: UNLESS OTHER WISE SPECIFIED

1. ALL DIMENSIONS IN INCHES
2. DIMENSIONS AND TOLERANCING PER ANAS1 Y14.5M-1994
3. SURFACE TEXTURE PER ANI/ASME B 46.1-1985
4. REMOVE ALL BURRS AND BREAK SHARP EDGES TO A MAXIMUM OF .015
5. ALL INSIDE CORNERS TO BE .015 RADIUS MAX
6. COUNTERSINK 82 DEGREES ALL TAPPED HOLES TO MAJOR DIAMETER
7. COUNTERSINK 82 DEGREES APPROXIMATELY .03/.06 DEEP ALL DRILLED HOLES
8. PARTS TO BE THOROUGHLY CLEANED TO REMOVE ALL OIL, GREASE, DIRT AND CHIPS
9. PART NUMBER (DRAWING NO., DASH NO., REVISION NO., SERIAL NO.) TO BE CLEARLY MARKED ON THE PART ITSELF.

ITEM NO.	QTY.	PART NO.	DESCRIPTION					
PARTS LIST								
UNLESS OTHERWISE SPECIFIED: DIMENSIONS ARE IN INCHES -TOLERANCES-		CAD GENERATED DRAWING, DO NOT MANUALLY UPDATE DO NOT SCALE DRAWING						
DECIMALS	ANGULAR = +/- .30'	HYTEC, INC TITLE LIGO DIAL INDICATOR GAGE BLOCK						
.X = +/- .1	SURFACE FINISH = 250							
.XX = +/- .03		DESIGNED	H. SALAZAR	DATE	1-10-99	DWG. NO. D972159	SIZE D	SHEET NO. 1 of 1
.XXX = +/- .010		DRAWN	H. SALAZAR	1-10-99				
PART NO. D972159-1		CHECKED	E. SWENSEN	04-22-99				
		ENGR.	E. SWENSEN	04-22-99				
		APPROVED	T. THOMPSON	04-22-99	SCALE	1/2	REVISION	

8

7

6

5

4

3

2

1