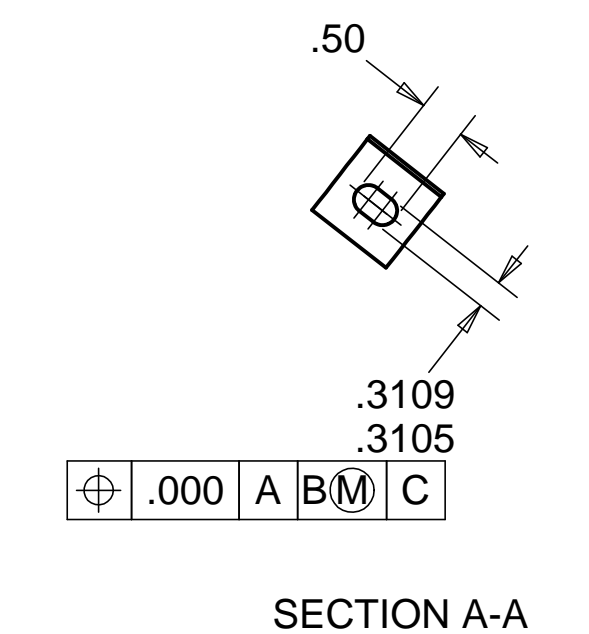
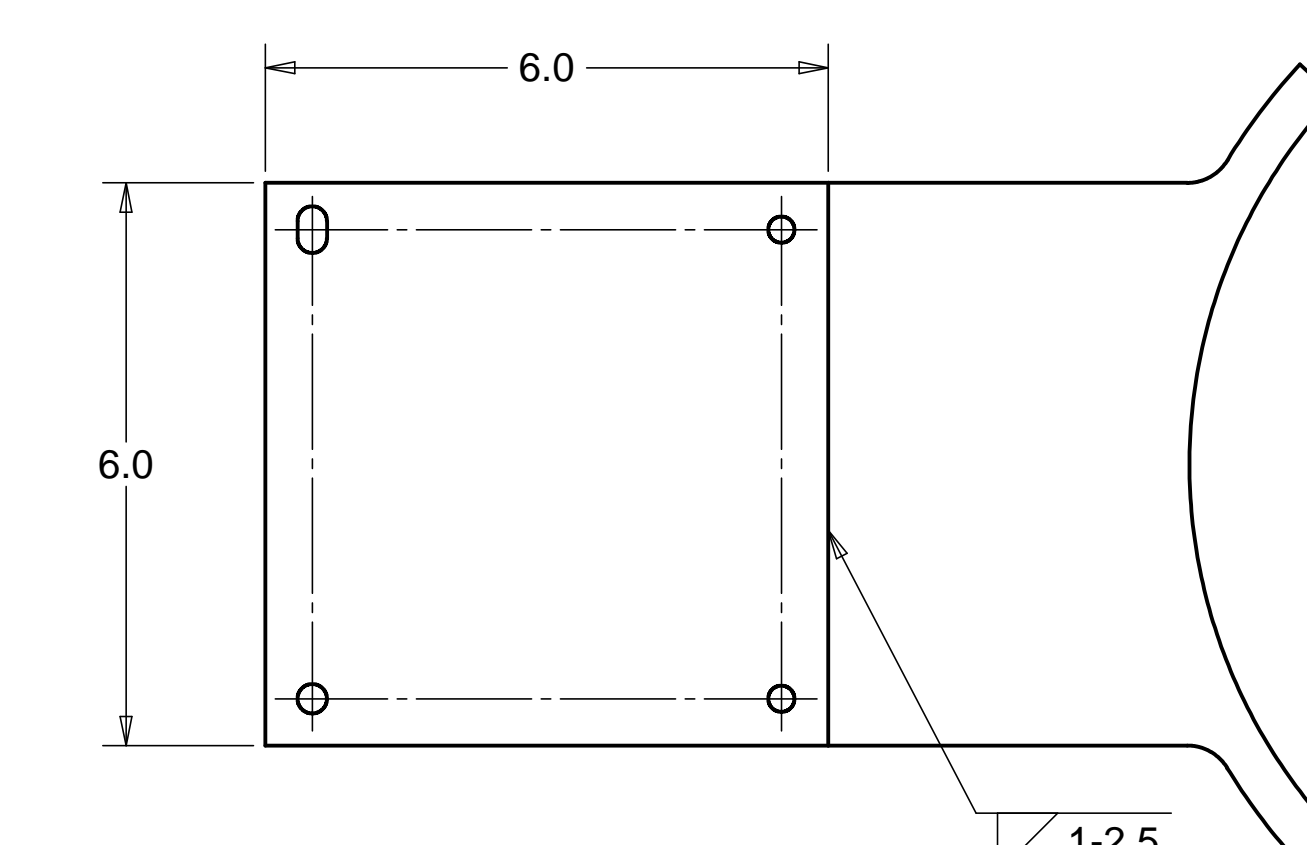
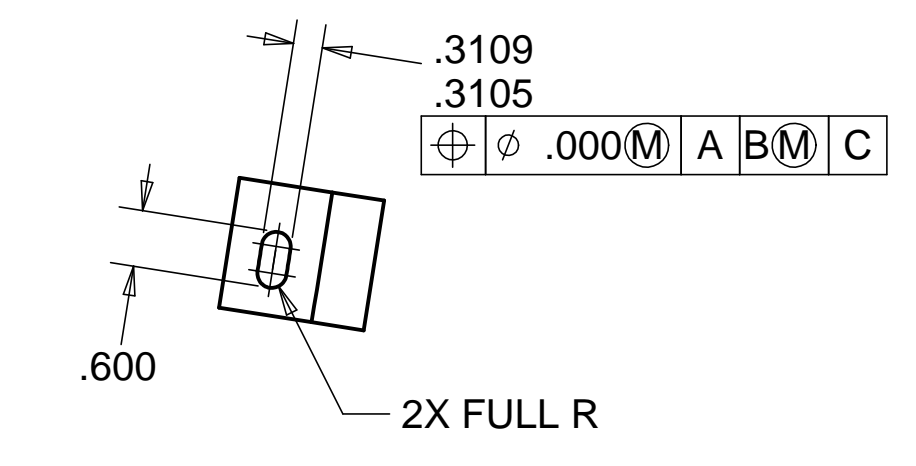
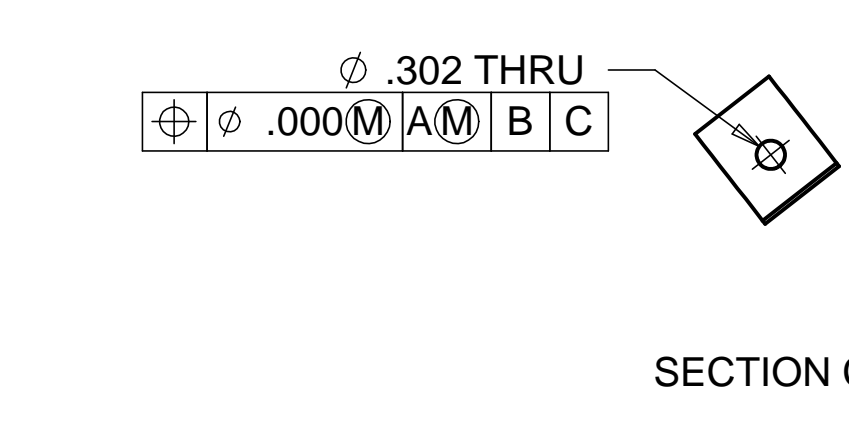
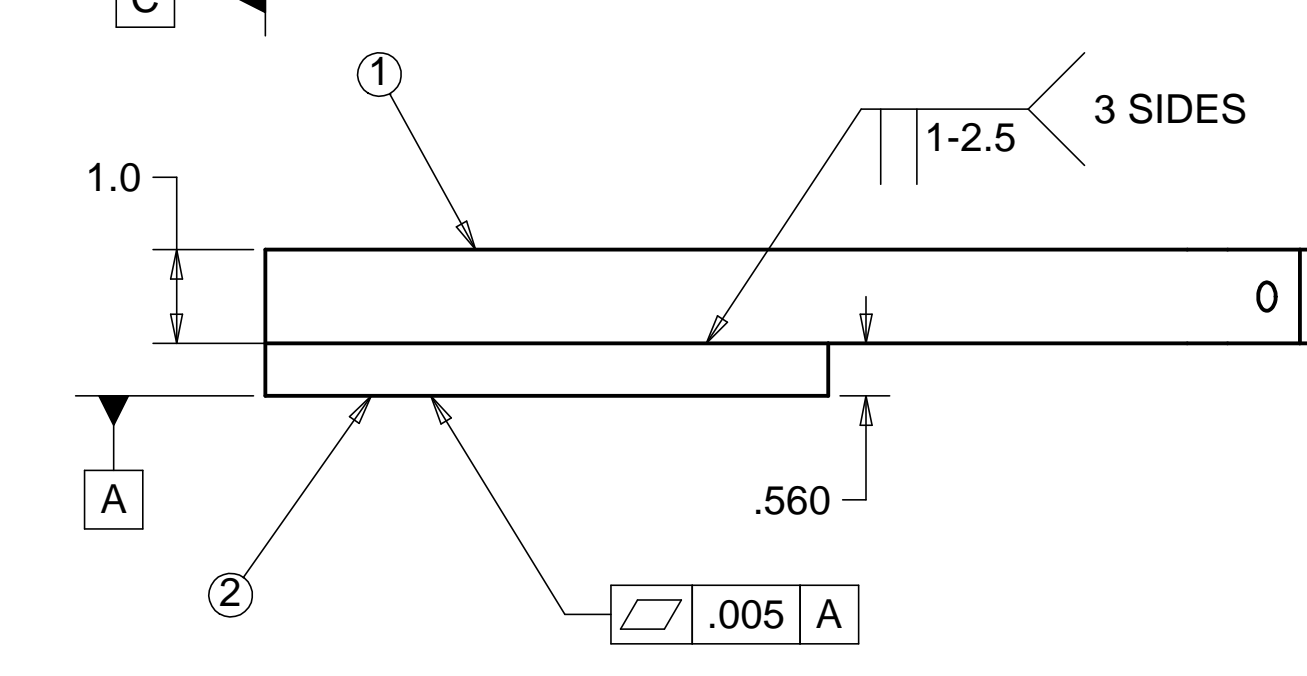
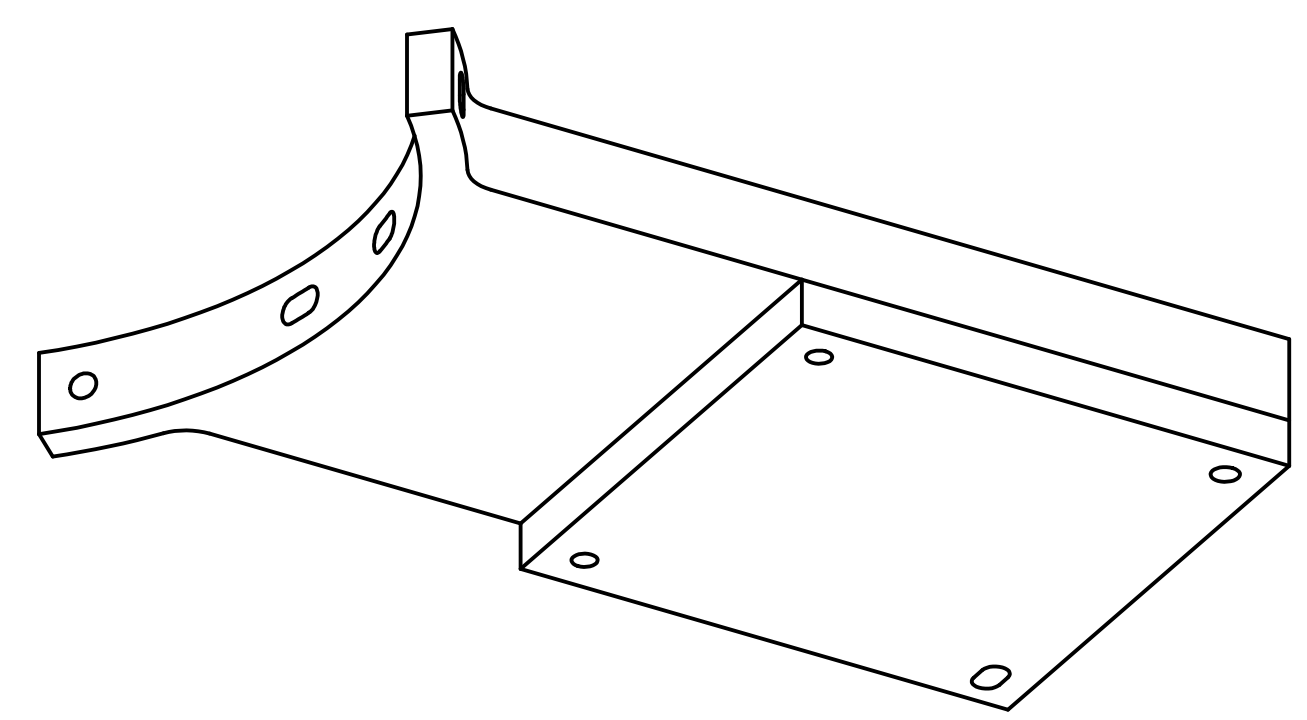
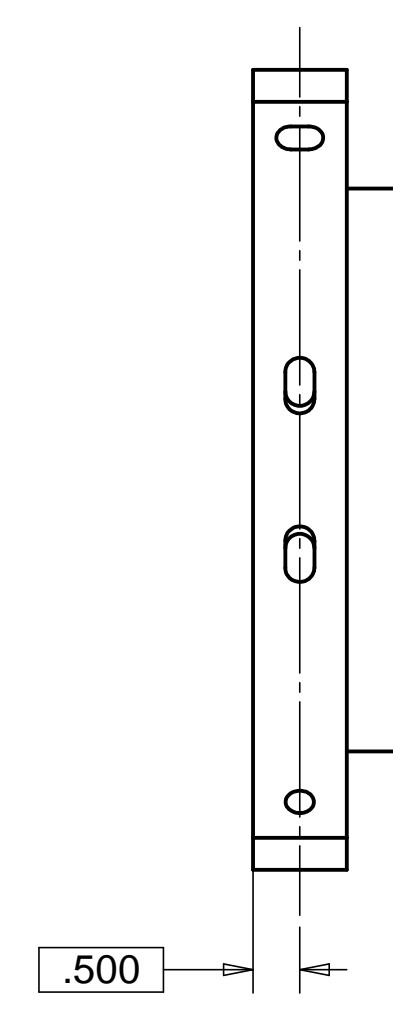
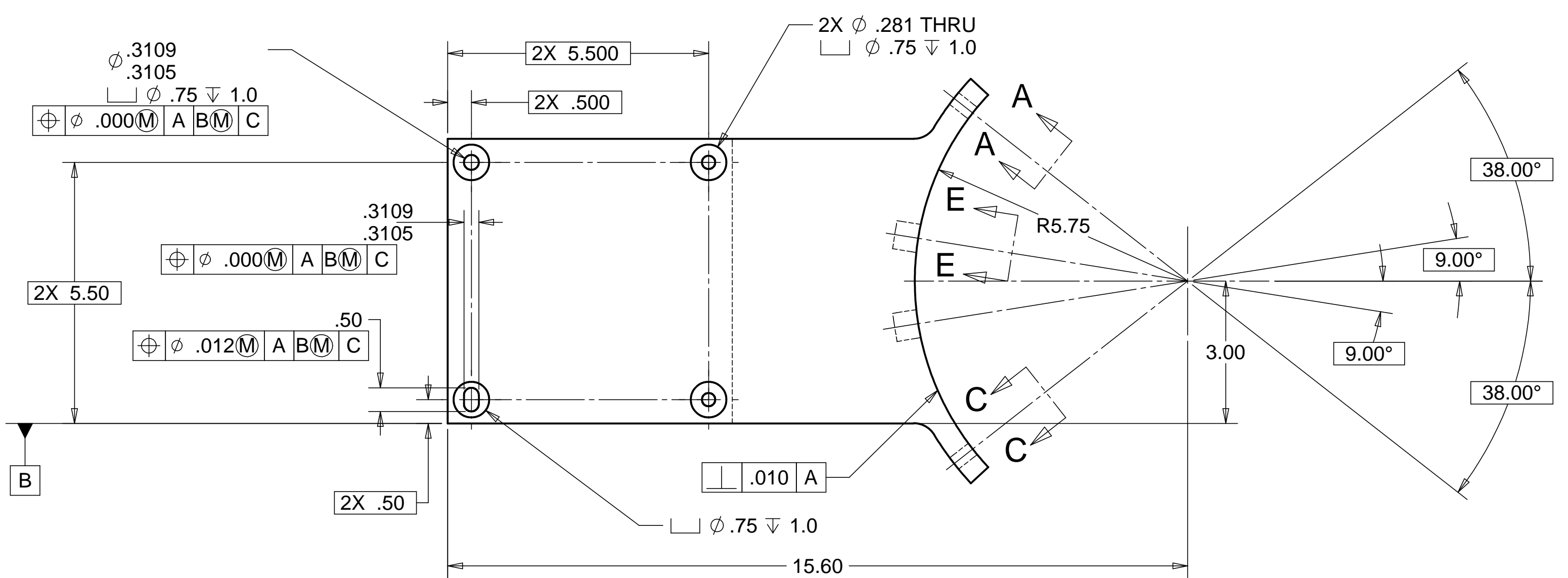


REVISIONS			
REV.	DESCRIPTION	DATE	APPROVED



NOTES: UNLESS OTHERWISE SPECIFIED

1. ALL DIMENSIONS IN INCHES
2. DIMENSIONS AND TOLERANCING PER ANAS1 Y14.5M-1994
3. SURFACE TEXTURE PER ANI/ASME B 46.1-1985
4. REMOVE ALL BURRS AND BREAK SHARP EDGES TO A MAXIMUM OF .015
5. ALL INSIDE CORNERS TO BE .015 RADIUS MAX
6. COUNTERSINK 82 DEGREES ALL TAPPED HOLES TO MAJOR DIAMETER
7. COUNTERSINK 82 DEGREES APPROXIMATELY .030 TO .060 DEEP ALL DRILLED HOLES
8. PARTS TO BE THOROUGHLY CLEANED TO REMOVE ALL OIL, GREASE, DIRT AND CHIPS
9. PART NUMBER (DRAWING NO. PLUS DASH NO. PLUS SERIAL NO.) TO BE CLEARLY MARKED ON THE PART ITSELF.

ITEM	QTY	PART NUMBER	DESCRIPTION	MATERIAL
1	1		FLEXURE JIG	STAINLESS STEEL
2	1		SPACER PLATE	STAINLESS STEEL

PARTS LIST			
UNLESS OTHERWISE SPECIFIED: DIMENSIONS ARE IN INCHES TOLERANCES:		CAD GENERATED DRAWING, DO NOT MANUALLY UPDATE DO NOT SCALE DRAWING	
DECIMALS	ANGULAR = +/- .30'	<b>HYTEC, INC</b> TITLE <b>ASSEMBLY FLEXURE JIG</b>	
.X = +/- .03	SURFACE FINISH = 250		
.XX = +/- .010			
.XXX = +/- .005			
FINISH	SIGNATURE	DATE	DWG. NO. <b>D972309</b> SIZE <b>D</b> SHEET NO. <b>1 of 1</b>
DESIGNED	E. ROMERO	7/30/98	
DRAWN	E. ROMERO	7/30/98	
CHECKED	E. SWENSEN	04-22-99	
PART NO.	ENGR.	E. SWENSEN	04-22-99
<b>D972309-1</b>	APPROVED	E. SWENSEN	04-22-99
SCALE 1/4			REVISION