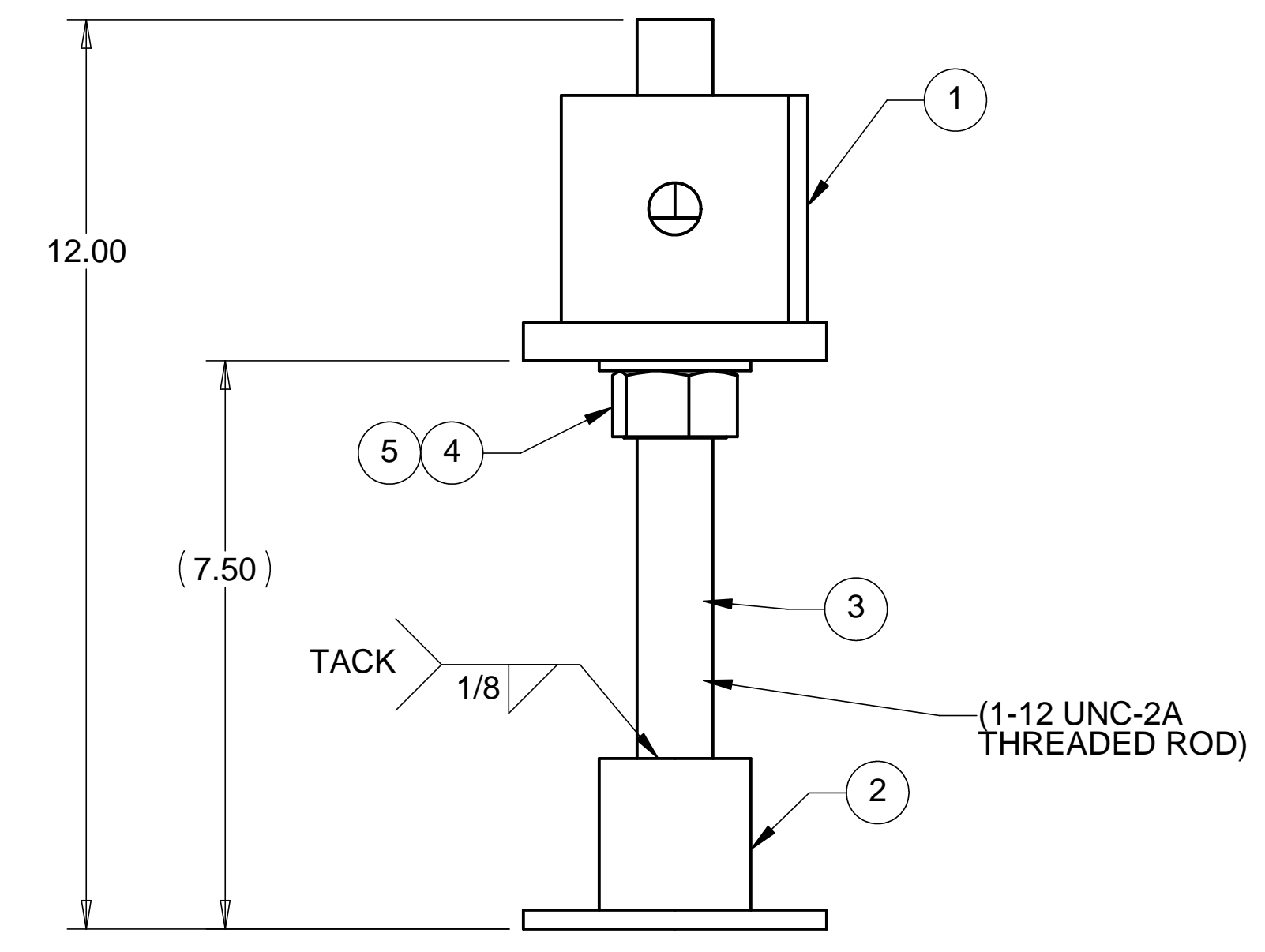
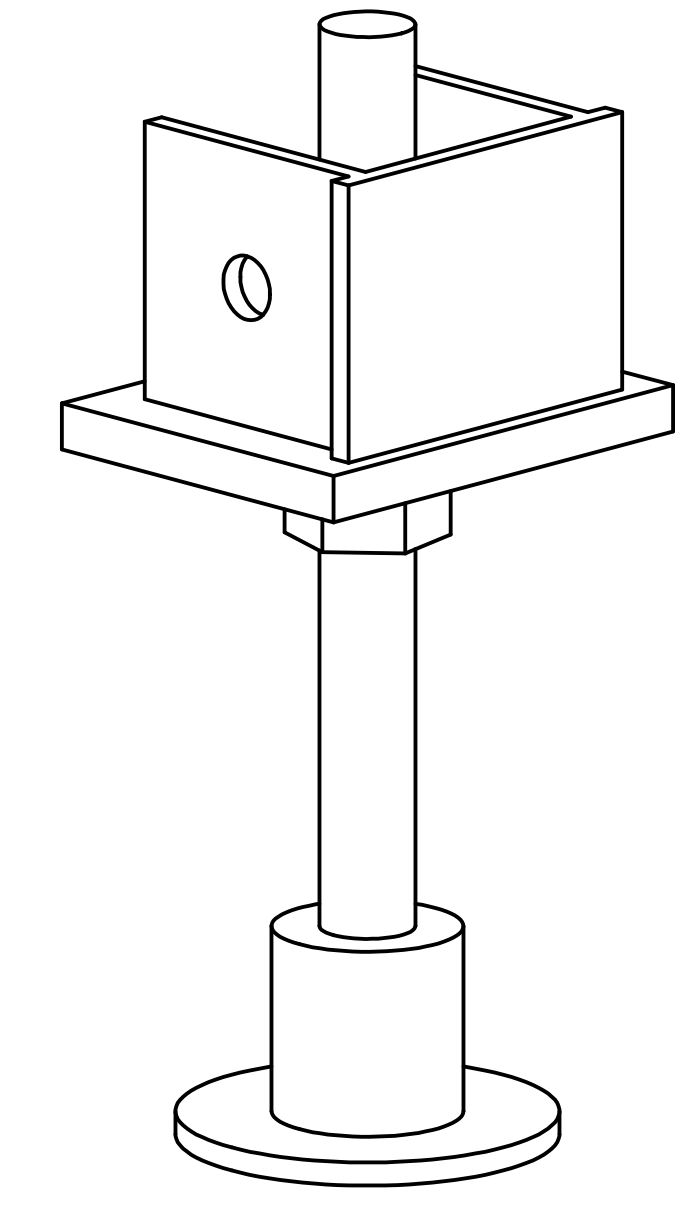
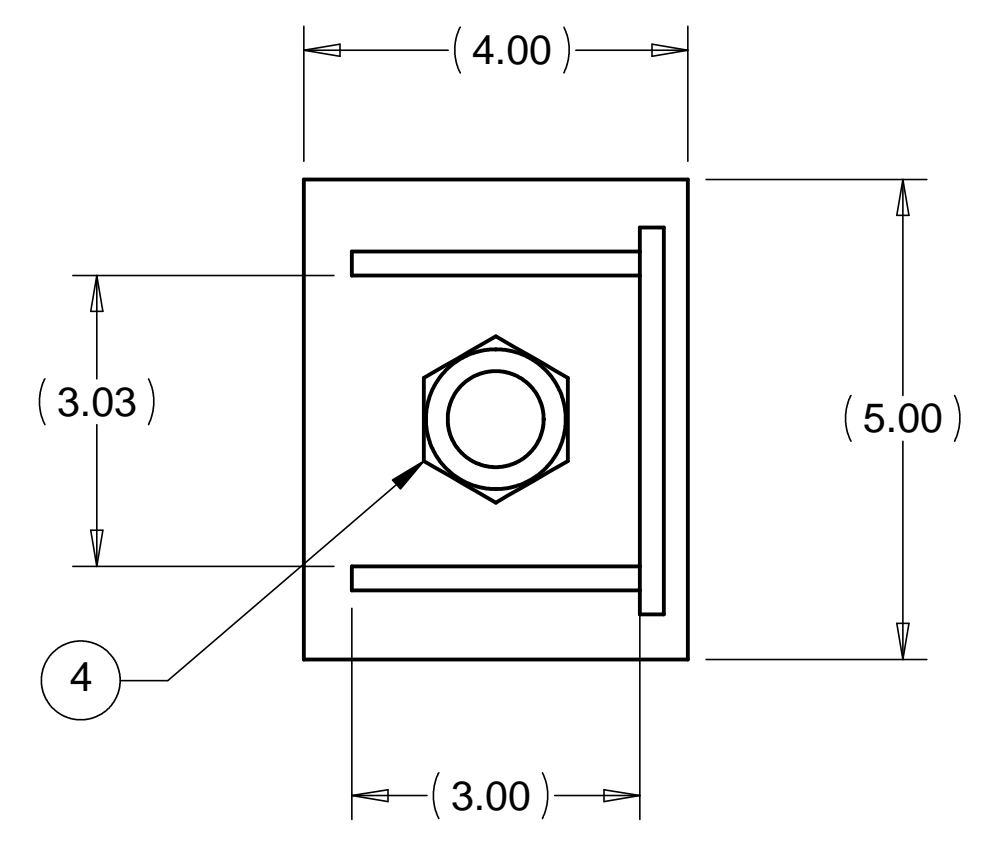


8 7 6 5 4 3 2 1

REVISIONS			
REV.	DESCRIPTION	DATE	APPROVED



ITEM NO.	QTY.	PART NO.	DESCRIPTION
1	1	D972442-1	ADJUSTABLE FOOT BASEPLATE
2	1	D972441-1	CASTOR FOOT
3	1	STD HARDWARE	SST THREADED ROD, 1-12 UNC-2A X 12.0 LONG
4	2	STD HARDWARE	SST HEX NUT, 1-12 UNC-2B
5	1	STD HARDWARE	WASHER, SST 1" FLAT

NOTES: UNLESS OTHERWISE SPECIFIED  
 1. ASSEMBLY WEIGHS 10.6. Lbs.

PARTS LIST				<b>HYTEC, INC</b> TITLE: BSC ROLLER SYSTEM ADJUSTABLE FOOT ASSEMBLY	
UNLESS OTHERWISE SPECIFIED: DIMENSIONS ARE IN INCHES -TOLERANCES- DECIMALS      ANGULAR = +/- .30° .XX = +/- .06      SURFACE FINISH = 250 .XXX = +/- .010		CAD GENERATED DRAWING, DO NOT MANUALLY UPDATE DO NOT SCALE DRAWING		DWG. NO.	SIZE SHEET NO.
FINISH	DESIGNED	SIGNATURE	DATE	D972395	D 1 of 1
	DRAWN	W. K. MILLER	2/5/98		
	CHECKED	HARRY SALAZAR	-		
	ENGR.	T. THOMPSON	-		
PART NO.	APPROVED	T. THOMPSON	-	SCALE 1/2	REVISION
D972395-1					

8 7 6 5 4 3 2 1