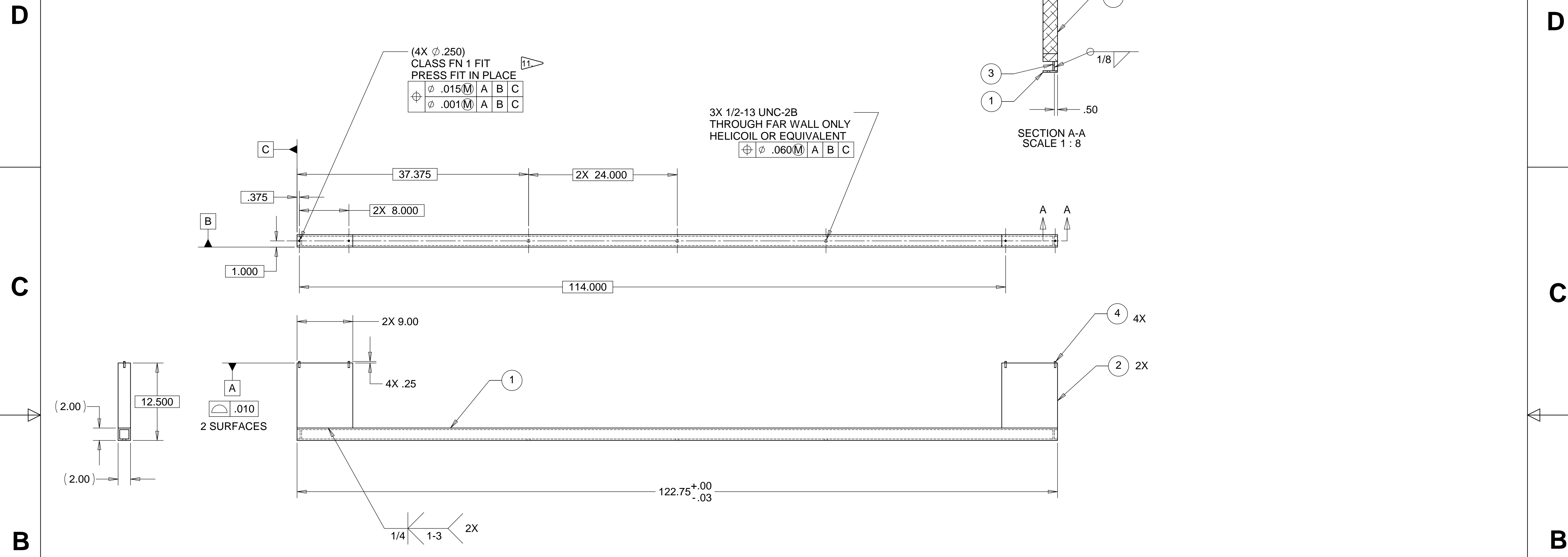


8 7 6 5 4 3 2 1

REVISIONS			
REV.	DESCRIPTION	DATE	APPROVED



WEIGHT 57.2 Lbs.

NOTES: UNLESS OTHERWISE SPECIFIED

1. ALL DIMENSIONS IN INCHES
 2. DIMENSIONS AND TOLERANCING PER ANSI Y14.5M-1994
 3. SURFACE TEXTURE PER ANI/ASME B 46.1-1985
 4. REMOVE ALL BURRS AND BREAK SHARP EDGES TO A MAXIMUM OF .015
 5. ALL INSIDE CORNERS TO BE .015 RADIUS MAX
 6. COUNTERSINK 82 DEGREES ALL TAPPED HOLES TO MAJOR DIAMETER
 7. COUNTERSINK 82 DEGREES APPROXIMATELY .015 DEEP ALL DRILLED HOLES
 8. PART NUMBER (DRAWING NO. PLUS SHEET NO.) TO BE CLEARLY MARKED EITHER ON THE PART ITSELF, OR ON A TAG ATTACHED TO THE PART OR PACKAGE
 9. ALL ALUM. WELDING DONE BY A GTAW PROCESS USING 2% THORIATED TUNGSTEN WELDING ELECTRODES AND ER4043 WELDING ROD (SPEC. PER AWS A5.10-80).
 10. NO SULFER BASED CUTTING FLUIDS ALLOWED. APPROVED MACHINE LUBRICANT: ALUMICUT, MISTIC METAL MOVER, PRINCETON, IL.
11. USING SHIMS, CLAMP TUBING IN A RELAXED STATE BEFORE DRILLING ϕ .250 HOLES.

ITEM NO.	QTY.	PART NO./MATERIAL	DESCRIPTION
1	1	6061-T6 ALUM	TUBING, 2 X 2 X .25 WALL
2	2	6061-T6 ALUM	PLATE, 2" THK
3	2	6061-T6 ALUM	PLATE, 1/4" THK
4	4	McMASTER #98381A542	PIN, SSSL, 1/4 DIA X 1.0 LONG

UNLESS OTHERWISE SPECIFIED: DIMENSIONS ARE IN INCHES -TOLERANCES-		CAD GENERATED DRAWING, DO NOT MANUALLY UPDATE DO NOT SCALE DRAWING		HYTEC, INC TITLE BSC OPTICS PLATE TOOLING BAR		
						DECIMALS .XX = +/- .03 .XXX = +/- .010
FINISH	SIGNATURE	DATE	DWG. NO. D972495 SIZE D SHEET NO. 1 of 1 SCALE 1/8 REVISION			
DESIGNED	W. K. MILLER	4/14/98				
DRAWN	W. K. MILLER	4/14/98				
CHECKED	R. SMITH	12/16/98				
PART NO. D972495-1	ENGR.	B. WEINSTEIN	12/16/98			
	APPROVED	T. THOMPSON	12/16/98			

8 7 6 5 4 3 2 1