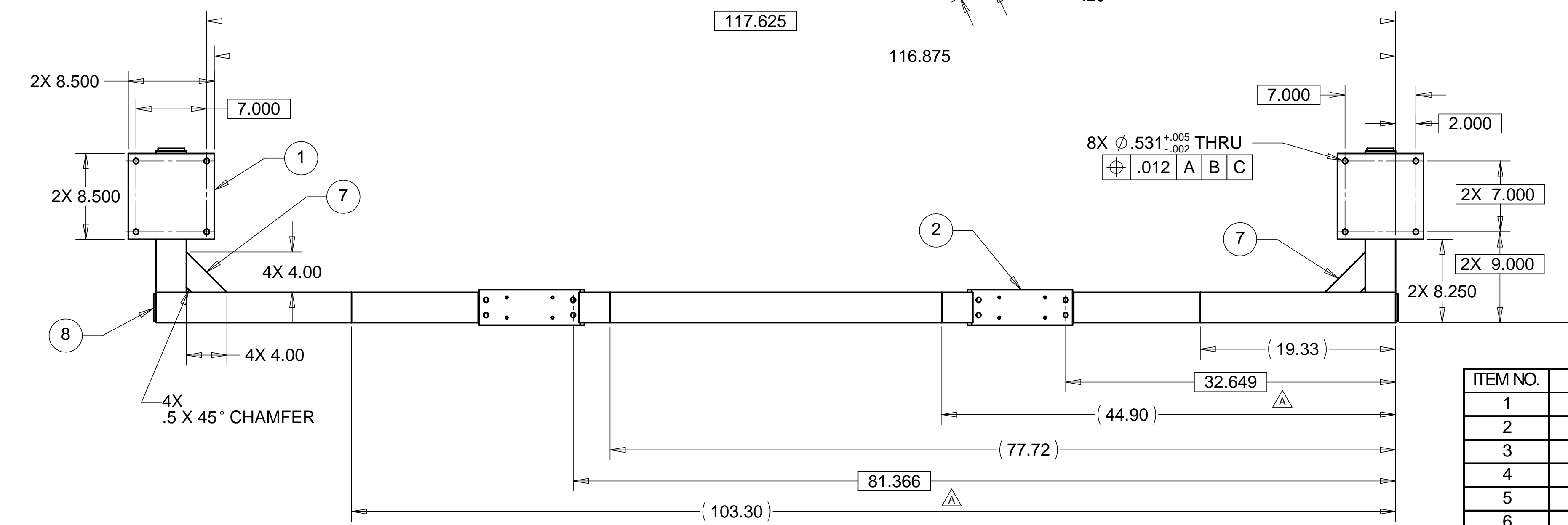
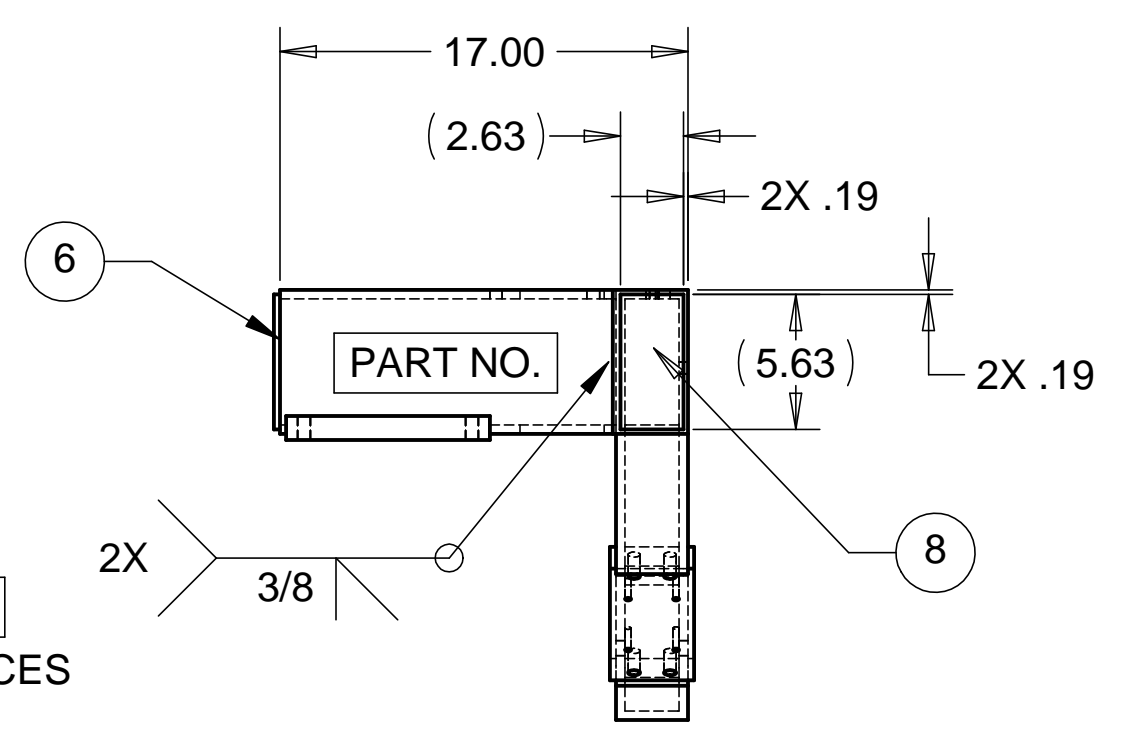
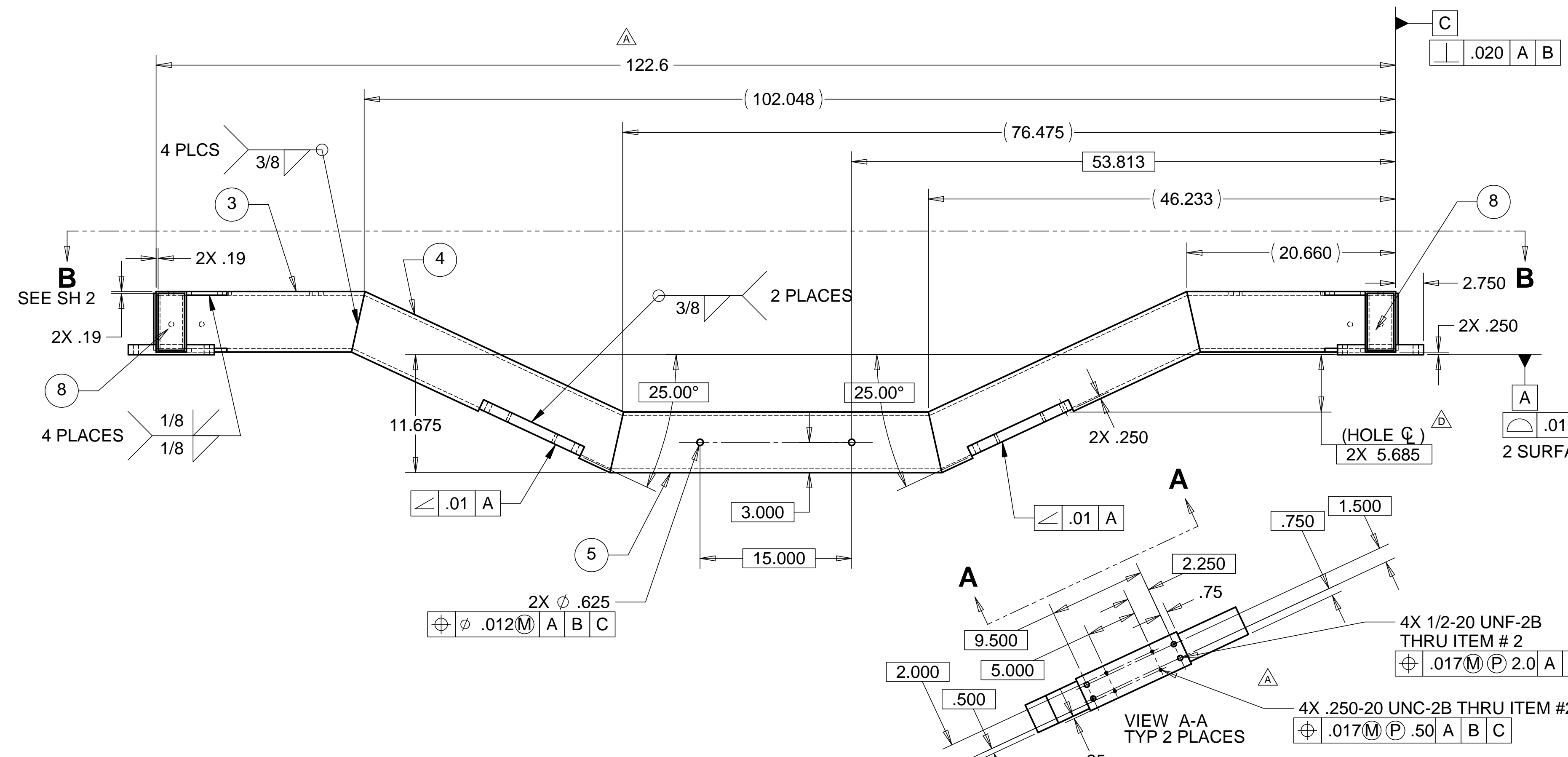


8 7 6 5 4 3 2 1

REVISIONS			
REV.	DESCRIPTION	DATE	APPROVED
A	SEE ECN# D972612-A FOR CHANGE LIST	11-03-97	T. THOMPSON
B	SEE ECN# D972612-B FOR CHANGE LIST	01-15-98	T. THOMPSON
C	SEE ECN# D972612-C FOR CHANGE LIST	04-15-98	T. THOMPSON
D	SEE ECN# D972612-D FOR CHANGE LIST	06-18-98	T. THOMPSON



- NOTES: UNLESS OTHERWISE SPECIFIED
- ALL DIMENSIONS IN INCHES
 - DIMENSIONS AND TOLERANCING PER ASME Y14.5M-1994
 - SURFACE TEXTURE PER ANSI/ASME B 46.1-1985
 - REMOVE ALL BURRS AND BREAK SHARP EDGES TO A MAXIMUM OF .015
 - ALL INSIDE CORNERS TO BE .015 RADIUS MAX
 - COUNTERSINK 82 DEGREES ALL TAPPED HOLES TO MAJOR DIAMETER
 - COUNTERSINK 82 DEGREES APPROXIMATELY .03/.06 DEEP ALL DRILLED HOLES
 - PARTS TO BE THOROUGHLY CLEANED TO REMOVE ALL OIL, GREASE, DIRT AND CHIPS
 - PART NUMBER (DRAWING NO., DASH NO., REVISION NO., SERIAL NO.) TO BE CLEARLY MARKED ON THE PART ITSELF.
 - PAINT:
ALL VISIBLE SURFACES
MEDIUM BLUE SHERWIN WILLIAMS (POLANE (R) T-PLUS,
POLYURETHANE ENAMEL.) #SW-F63TX-L-2822-5864.
PRIME WITH SHERMAN-WILLIAMS INDUSTRIAL WASH PRIMER P60G2.
 - "OXI SOLV RUST INHIBITER" TO BE APPLIED PER MFG. INSTRUCTIONS TO ALL UNPAINTED SURFACES.
BOTH TAPPED AND THRU BOLT HOLES WILL BE PLUGGED DURING APPLICATION.

WEIGHT: 321.2 lbs.

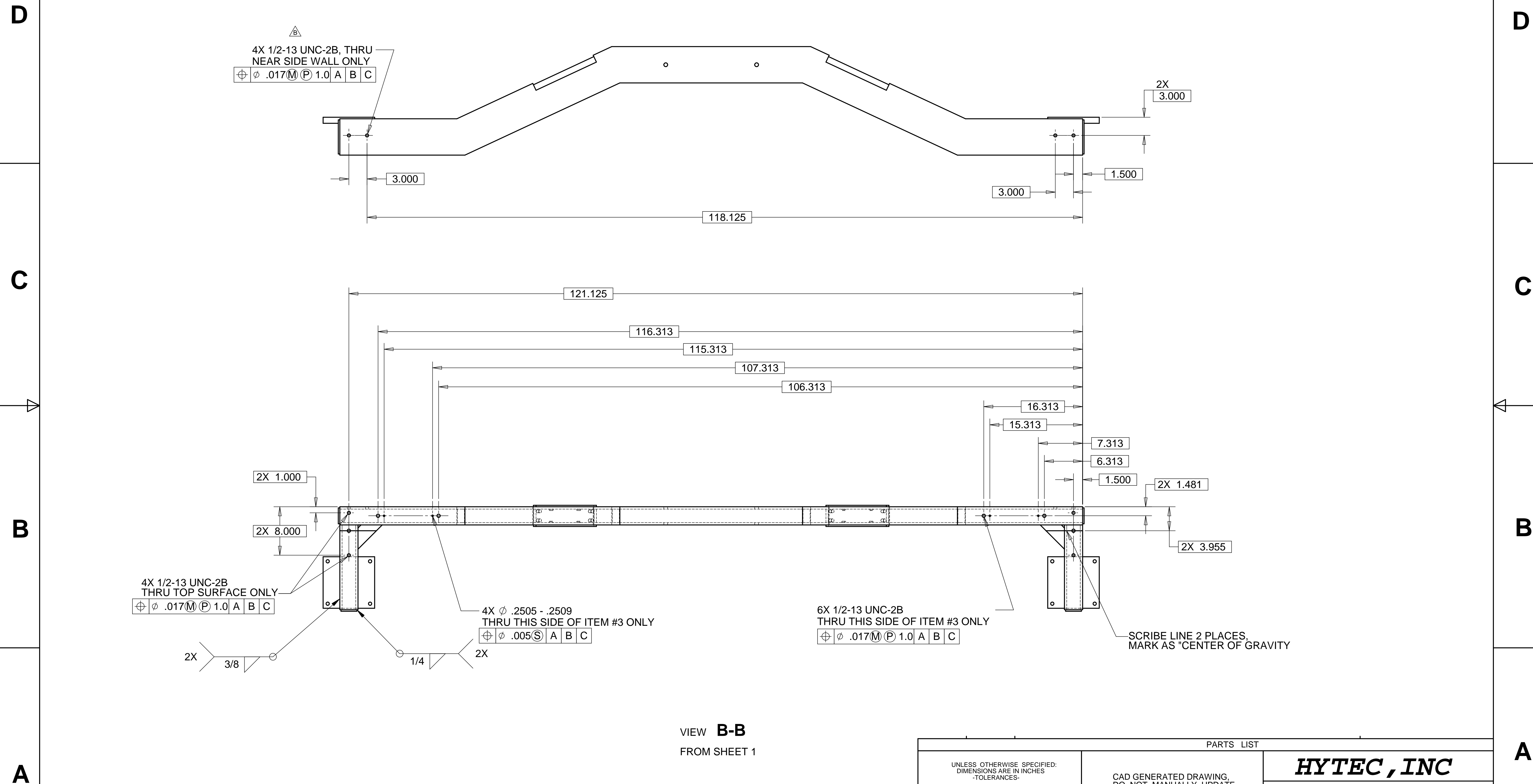
ITEM NO.	QTY.	DESCRIPTION	MATERIAL
1	2	END MOUNTING PAD, 1.00 THK	A36 STEEL
2	2	CENTER MOUNTING PAD, 1.00 THK	A36 STEEL
3	2	BOX BEAM, 3 X 6 X .38 WALL	A500 GRADE B STEEL
4	2	BOX BEAM, 3 X 6 X .38 WALL	A500 GRADE B STEEL
5	1	BOX BEAM, 3 X 6 X .38 WALL	A500 GRADE B STEEL
6	2	BOX BEAM, 3 X 6 X .38 WALL	A500 GRADE B STEEL
7	4	GUSSET, .38 THK PLATE	A36 STEEL
8	4	CLOSURE PLATE, 5.63 X 2.63 X 1/4 THK	A36 STEEL

PARTS LIST			
UNLESS OTHERWISE SPECIFIED: DIMENSIONS ARE IN INCHES -TOLERANCES-		HYTEC, INC TITLE LIGO HAM CROSSBEAM WELDMENT	
DECIMALS .X = +/- .1 .XX = +/- .03 .XXX = +/- .010	ANGULAR = +/- .30° SURFACE FINISH = 250		
FINISH	SIGNATURE DESIGNED: ROGER L. SMITH	DATE 7-14-97	DWG. NO. D972612 SIZE D SHEET NO. 1 of 2 SCALE 1/8 REVISION D
PART NO. D972612-1	DRAWN R. SMITH/E. PIOTROWICZ	7/9/97	
	CHECKED HARRY SALAZAR	7-14-97	
	ENGR. T. THOMPSON	7-14-97	
APPROVED T. THOMPSON		7-14-97	

8 7 6 5 4 3 2 1

8 7 6 5 4 3 2 1

REVISIONS			
REV.	DESCRIPTION	DATE	APPROVED
B	SEE ECN# D972612-B FOR CHANGE LIST	01-15-98	T. THOMPSON
C	SEE ECN# D972612-C FOR CHANGE LIST	04-15-98	T. THOMPSON
D	SEE ECN# D972612-D FOR CHANGE LIST	06-18-98	



PARTS LIST			
UNLESS OTHERWISE SPECIFIED: DIMENSIONS ARE IN INCHES -TOLERANCES-		CAD GENERATED DRAWING, DO NOT MANUALLY UPDATE DO NOT SCALE DRAWING	
DECIMALS .XX = +/- .03 .XXX = +/- .010	ANGULAR = +/- .30° SURFACE FINISH = 250	<p>HYTEC, INC</p> <p>TITLE LIGO HAM CROSSBEAM WELDMENT</p>	
FINISH		SIGNATURE	DATE
		DESIGNED ROGER L. SMITH	5-28-97
		DRAWN ROGER L. SMITH	5-28-97
		CHECKED HARRY SALAZAR	11-6-97
		ENGR. T. THOMPSON	11-6-97
		APPROVED T. THOMPSON	11-6-97
PART NO. D972612-1		DWG. NO. D972612	SCALE 1/8
		SIZE D	SHEET NO. 2 of 2
		REVISION D	

8 7 6 5 4 3 2 1