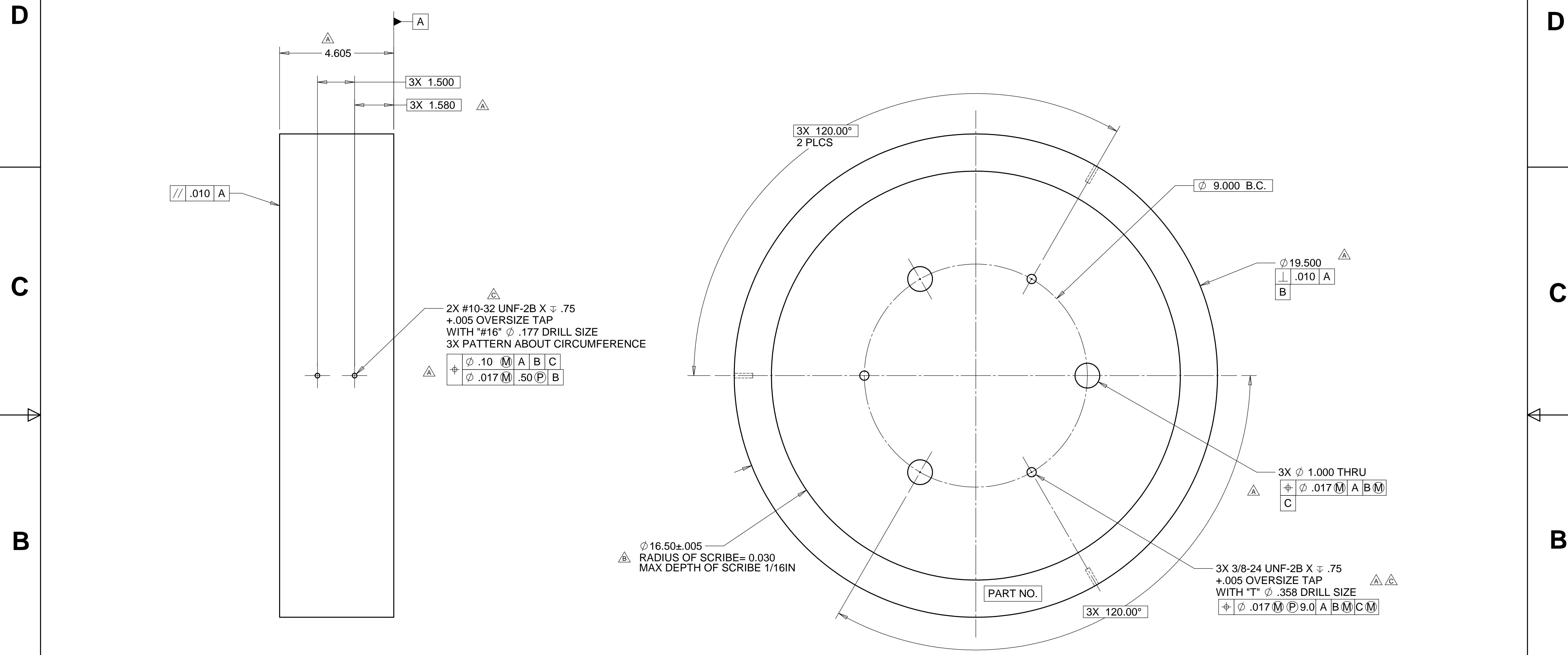


8 7 6 5 4 3 2 1

REVISIONS			
REV.	DESCRIPTION	DATE	APPROVED
A	SEE ECN# D972712-A FOR CHANGE LIST	11-03-97	T. THOMPSON
B	SEE ECN# D972712-B FOR CHANGE LIST	04-15-98	T. THOMPSON
C	SEE ECN# D972712-C FOR CHANGE LIST	08-31-98	T. THOMPSON



2X #10-32 UNF-2B X .75
+.005 OVERSIZE TAP
WITH "#16" Ø .177 DRILL SIZE
3X PATTERN ABOUT CIRCUMFERENCE

Ø .10	M	A	B	C
Ø .017	M	.50	P	B

Ø 16.50 ± 0.005
RADIUS OF SCRIBE = 0.030
MAX DEPTH OF SCRIBE 1/16IN

3X Ø 1.000 THRU	A
Ø .017	M A B M
	C

3X 3/8-24 UNF-2B X .75 +.005 OVERSIZE TAP WITH "T" Ø .358 DRILL SIZE	A	A
Ø .017	M P 9.0	A B M C M

NOTES: UNLESS OTHERWISE SPECIFIED

- ALL DIMENSIONS IN INCHES
- DIMENSIONS AND TOLERANCING PER ASME Y14.5M-1994
- SURFACE TEXTURE PER ANSI/ASME B 46.1-1985
- REMOVE ALL BURRS AND BREAK SHARP EDGES TO A MAXIMUM OF .015
- ALL INSIDE CORNERS TO BE .015 RADIUS MAX
- COUNTERSINK 82 DEGREES ALL TAPPED HOLES TO MAJOR DIAMETER
- COUNTERSINK 82 DEGREES APPROXIMATELY .015 DEEP ALL DRILLED HOLES
- PARTS TO BE THOROUGHLY CLEANED TO REMOVE ALL OIL, GREASE, DIRT AND CHIPS
- PART NUMBER (DRAWING NO. PLUS DASH NO. PLUS SERIAL NO.) TO BE CLEARLY MARKED ON THE PART ITSELF.
- ALL FABRICATION, CLEANING, AND HANDLING MAINTAINED TO HYTEC SPECIFICATION: LIGO-TS-03 CATEGORY 1.
- NO SULFUR BASED CUTTING FLUIDS ALLOWED. APPROVED STAINLESS STEEL MACHINE LUBRICANT: RELTON A-9, RELTON

MATL: 304 SST
WEIGHT: 394.2 lbs.

PARTS LIST			
UNLESS OTHERWISE SPECIFIED: DIMENSIONS ARE IN INCHES -TOLERANCES-	CAD GENERATED DRAWING, DO NOT MANUALLY UPDATE DO NOT SCALE DRAWING		HYTEC, INC TITLE LIGO HAM ISOLATION STACK LEG ELEMENT #1
	DECIMALS	ANGULAR = +/- 30'	
FINISH	SIGNATURE		DATE
ALL MACHINED SURFACES 64 RMS	DESIGNED	ROGER L. SMITH	5-28-97
PART NO. D972712-1	DRAWN	ROGER L. SMITH	5-28-97
	CHECKED	HARRY SALAZAR	6-6-97
	ENGR.	T. THOMPSON	7-10-97
	APPROVED	T. THOMPSON	7-10-97
	DWG. NO.	D972712	
	SCALE	1/2	
	SIZE	D 1 of 1	
	SHEET NO.	1 of 1	
	REVISION	C	

8 7 6 5 4 3 2 1