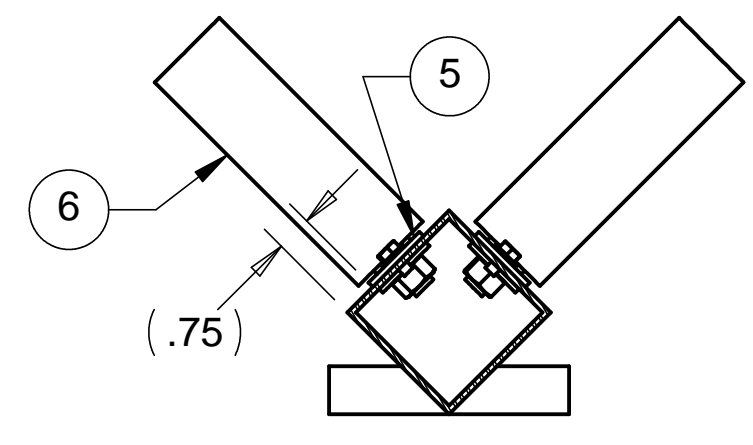


8 7 6 5 4 3 2 1

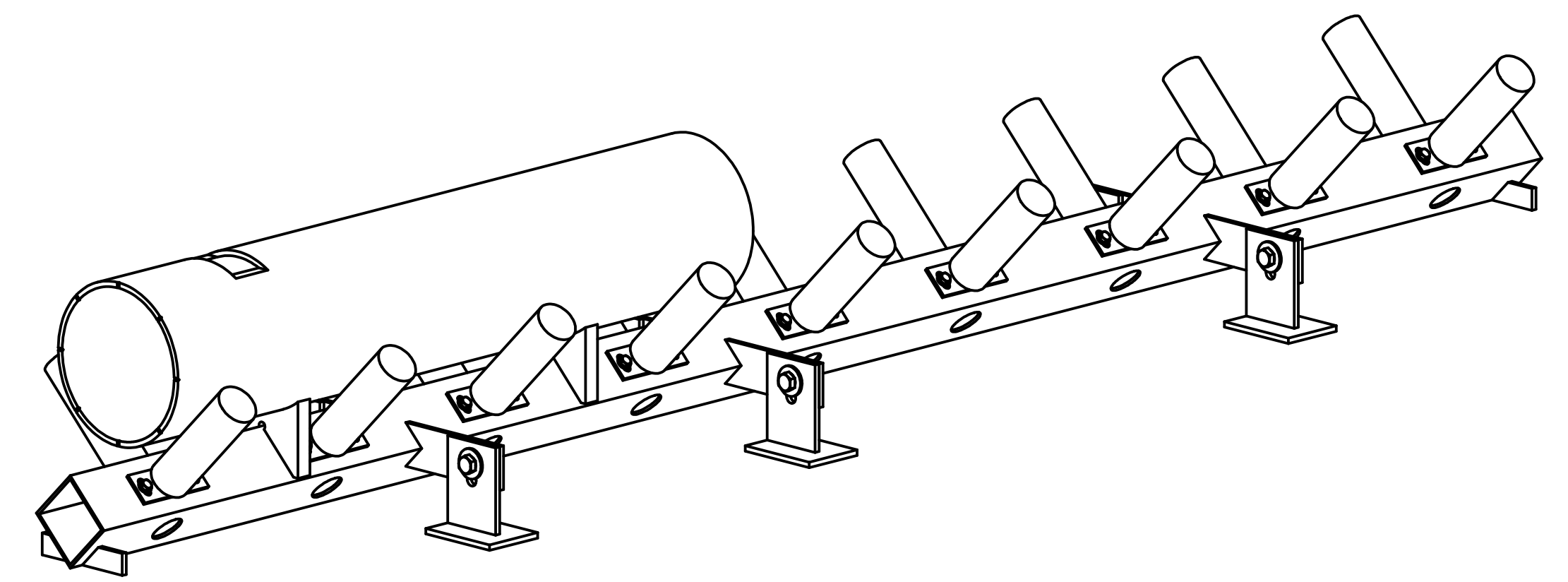
REVISIONS			
REV.	DESCRIPTION	DATE	APPROVED

D

D

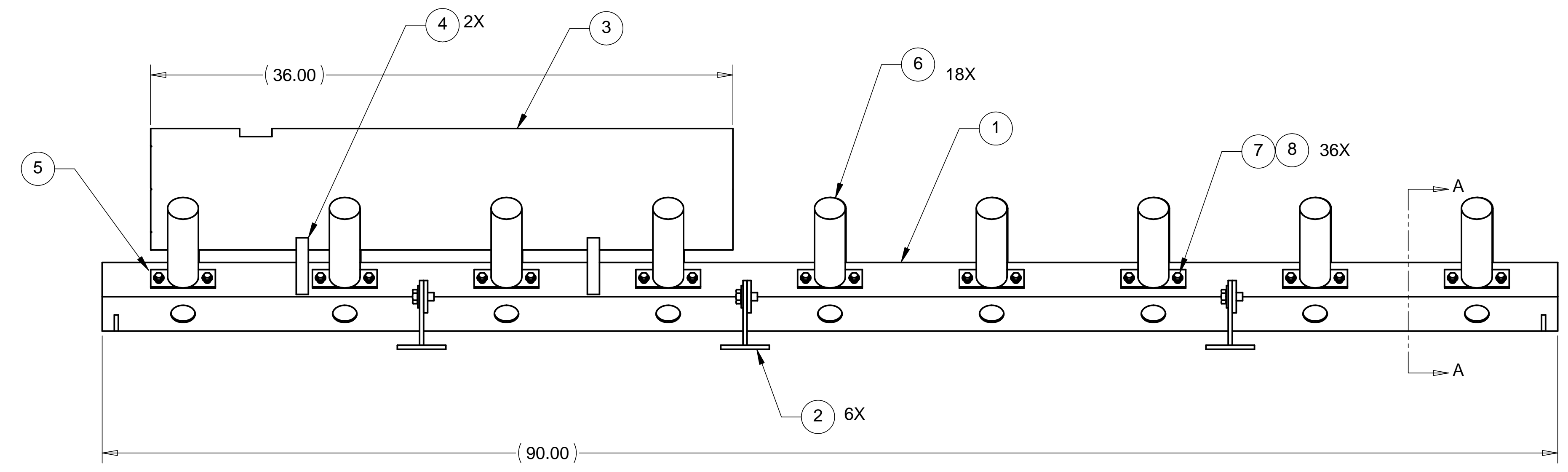
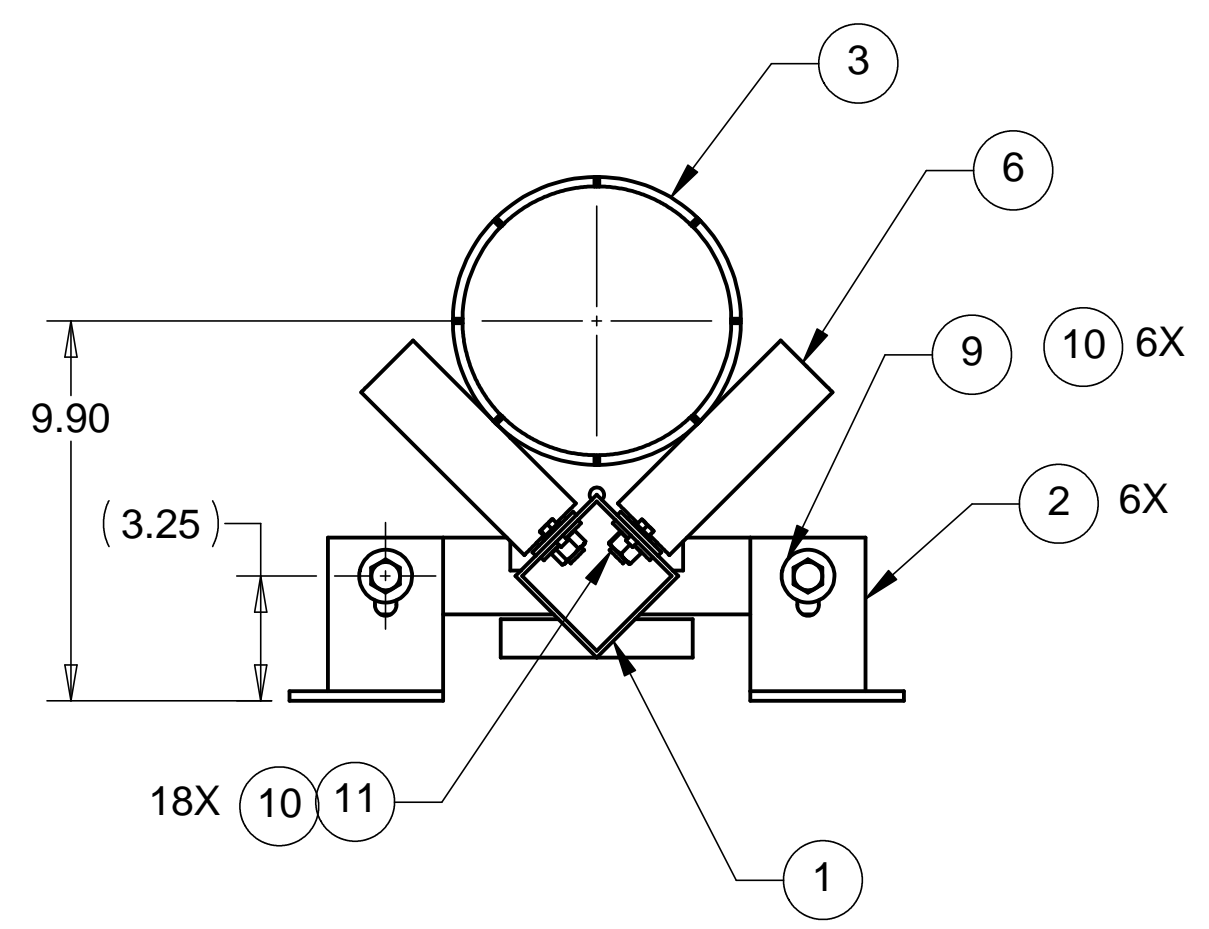


SECTION A-A  
SCALE 1 : 4



C

C



B

B

A

A

NOTES: UNLESS OTHERWISE SPECIFIED  
1. HAM ROLLER ASSEMBLY WITHOUT JIGS WEIGHS 62.2 Lbs.

ITEM NO.	QTY.	PART NO.	DESCRIPTION
1	1	D972931-1	HAM ROLLER SYSTEM BEAM
2	6	D972932-1	HAM ROLLER SYSTEM FOOT
3	1	D972933-1	HAM ROLLER SYSTEM TUBE JIG
4	2	D972934-1	HAM ROLLER SYSTEM TUBE SPACING JIG
5	18	D972935-1	HAM ROLLER SYSTEM ROLLER MOUNTING PLATE
6	18	1.340-A49-S53	ROLLER, 1.90 O.D. X 5.0 RL, INTERROLL CORP.
7	36	STD HARDWARE	HEX HEAD SST SCREW, 1/4-28 UNF-2A X .50 LONG
8	36	STD HARDWARE	WASHER, SST 1/4 FLAT
9	6	STD HARDWARE	HEX HEAD SST BOLT, 1/2-13 UNC-2A X .50 LONG
10	24	STD HARDWARE	WASHER, SST 1/2 FLAT
11	18	STD HARDWARE	SST HEX NUT, 1/2-13 UNC-2B

PARTS LIST

UNLESS OTHERWISE SPECIFIED: DIMENSIONS ARE IN INCHES -TOLERANCES-		CAD GENERATED DRAWING, DO NOT MANUALLY UPDATE DO NOT SCALE DRAWING		<b>HYTEC, INC</b>	
DECIMALS .XX = +/- .05 .XXX = +/- .010	ANGULAR = +/- .30' SURFACE FINISH = 250	TITLE HAM ROLLER SYSTEM ASSEMBLY			
FINISH	DESIGNED	SIGNATURE	DATE	DWG. NO.	SIZE
	DRAWN	W. K. MILLER	12/12/97	D972884	D
PART NO.	CHECKED	HARRY SALAZAR	2/2/98	SHEET NO.	1 of 1
D972884-1	ENGR.	T. THOMPSON	2/2/98	SCALE	1/5
	APPROVED	T. THOMPSON	2/2/98	REVISION	

8 7 6 5 4 3 2 1