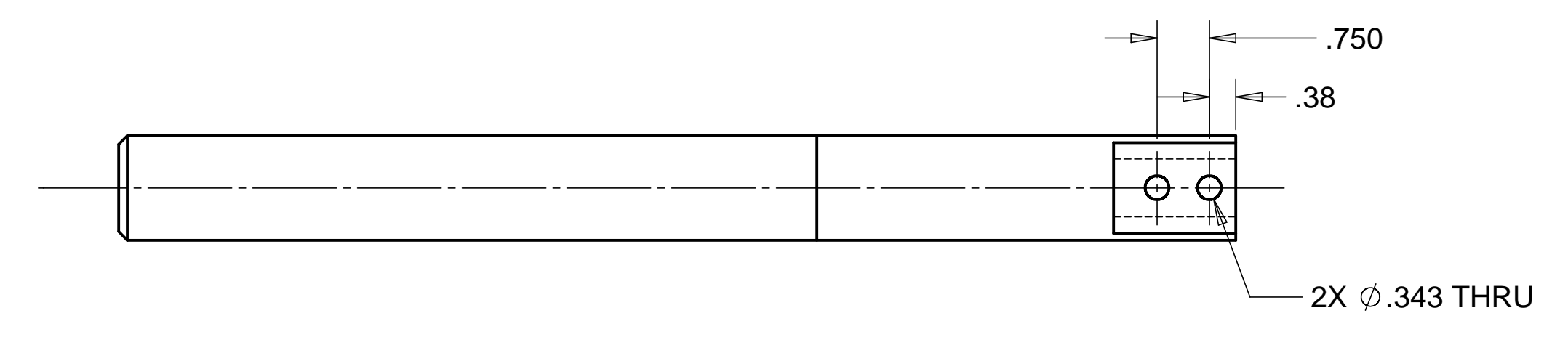


8 7 6 5 4 3 2 1

REVISIONS			
REV.	DESCRIPTION	DATE	APPROVED

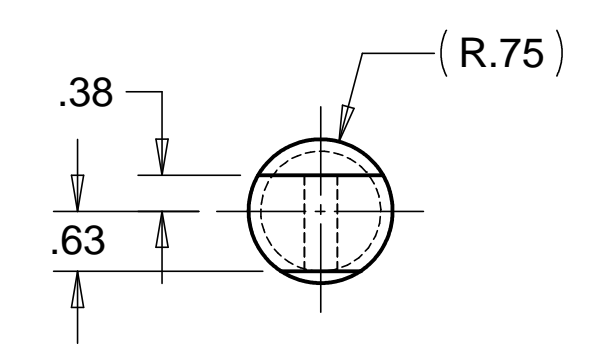
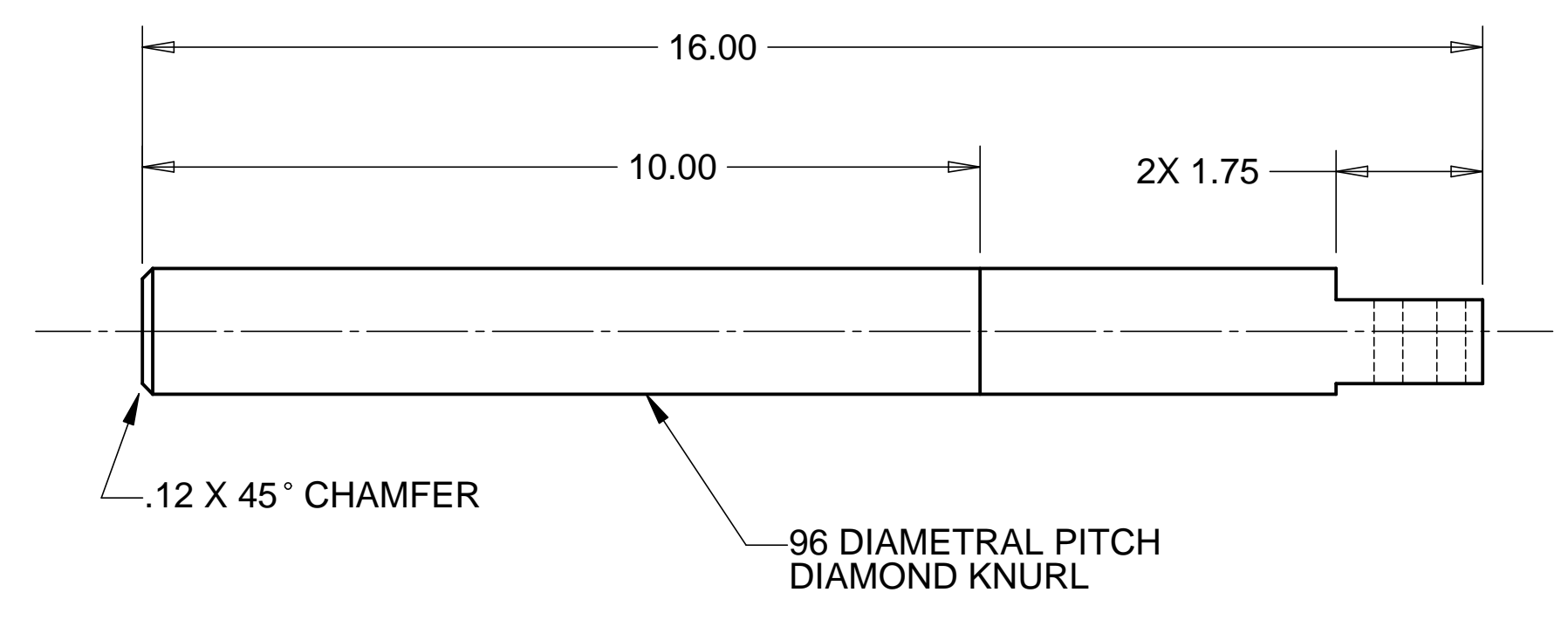
D

D



C

C



MATL: ϕ .75 303 SST BARSTOCK

B

B

NOTES: UNLESS OTHERWISE SPECIFIED

- ALL DIMENSIONS IN INCHES
- DIMENSIONS AND TOLERANCING PER ASME Y14.5M-1994
- SURFACE TEXTURE PER ANSI/ASME B 46.1-1985
- REMOVE ALL BURRS AND BREAK SHARP EDGES TO A MAXIMUM OF .015
- ALL INSIDE CORNERS TO BE .015 RADIUS MAX
- COUNTERSINK 82 DEGREES ALL TAPPED HOLES TO MAJOR DIAMETER
- COUNTERSINK 82 DEGREES APPROXIMATELY .015 DEEP ALL DRILLED HOLES
- PARTS TO BE THOROUGHLY CLEANED TO REMOVE ALL OIL, GREASE, DIRT, AND CHIPS.
- PART NUMBER (DRAWING NO. PLUS DASH NO. PLUS SERIAL NO.) TO BE CLEARLY MARKED ON THE PART ITSELF.
- PART WEIGHS 8.0 Lbs.

A

A

PARTS LIST			
UNLESS OTHERWISE SPECIFIED: DIMENSIONS ARE IN INCHES -TOLERANCES- DECIMALS ANGULAR = +/- .30' .XX = +/- .06 SURFACE FINISH = 250 .XXX = +/- .010	CAD GENERATED DRAWING, DO NOT MANUALLY UPDATE DO NOT SCALE DRAWING		HYTEC, INC
			TITLE HAM RAIL SYSTEM MINOR RAIL PUSH BAR
FINISH	DESIGNED	W. K. MILLER	1/3/98
PART NO. D972945-1	DRAWN	W. K. MILLER	1/3/98
	CHECKED	HARRY SALAZAR	2/2/98
	ENGR.	T. THOMPSON	2/2/98
	APPROVED	T. THOMPSON	2/2/98
SCALE 1/2		DWG. NO. D972945	SIZE SHEET NO. D 1 of 1
		REVISION	

8 7 6 5 4 3 2 1