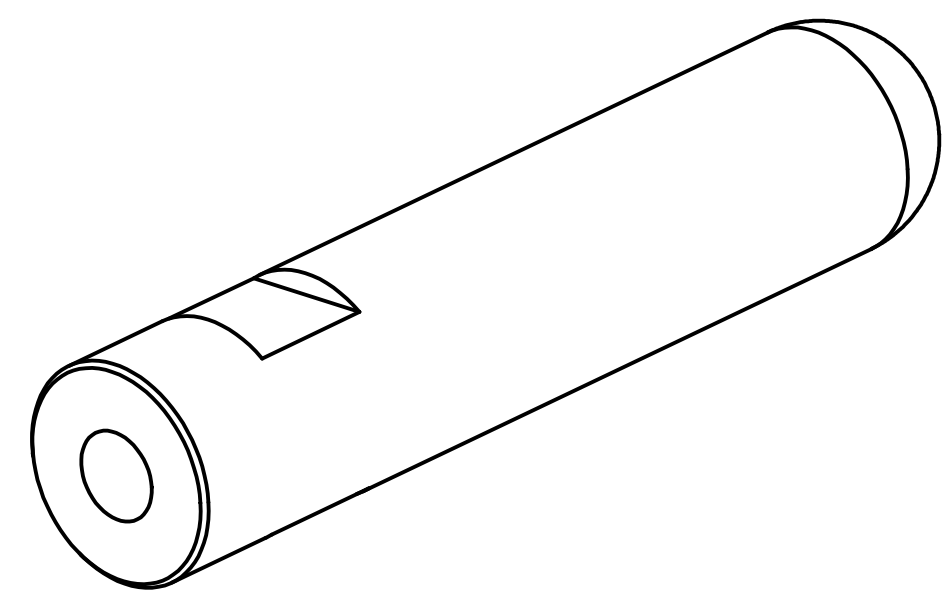


8 7 6 5 4 3 2 1

REVISIONS			
REV.	DESCRIPTION	DATE	APPROVED



D

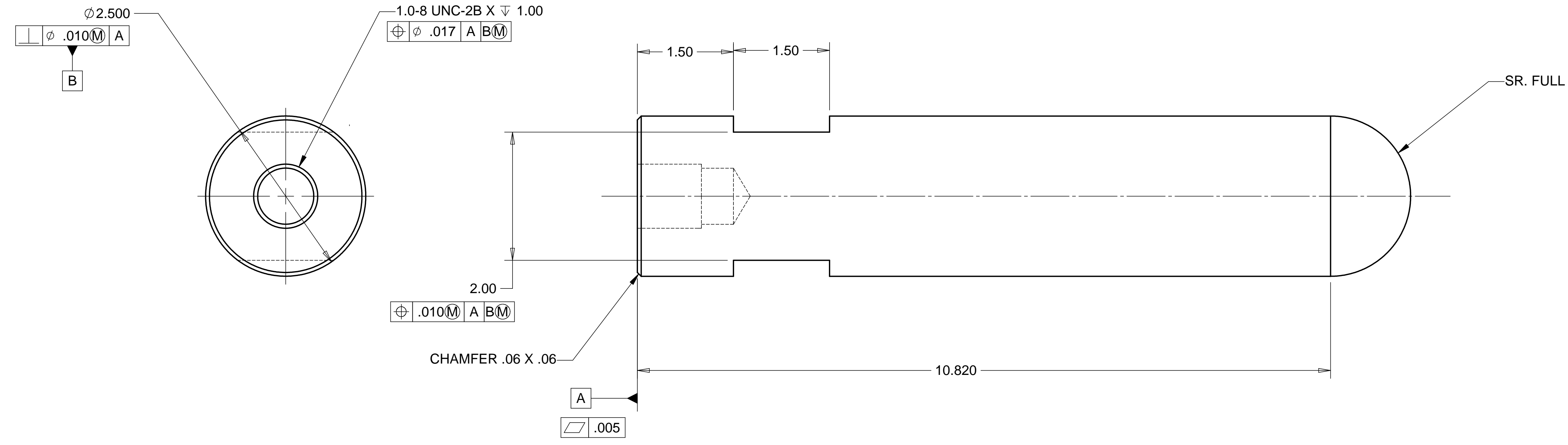
D

C

C

B

B



WEIGHT: 9.46 lbs

NOTES: UNLESS OTHERWISE SPECIFIED

1. ALL DIMENSIONS IN INCHES
2. DIMENSIONS AND TOLERANCING PER ASME Y14.5M-1994
3. SURFACE TEXTURE PER ANSI/ASME B 46.1-1985
4. REMOVE ALL BURRS AND BREAK SHARP EDGES TO A MAXIMUM OF .015
5. ALL INSIDE CORNERS TO BE .015 RADIUS MAX
6. COUNTERSINK 82 DEGREES ALL TAPPED HOLES TO MAJOR DIAMETER
7. COUNTERSINK 82 DEGREES APPROXIMATELY .015 DEEP ALL DRILLED HOLES
8. PARTS TO BE THOROUGHLY CLEANED TO REMOVE ALL OIL, GREASE, DIRT AND CHIPS
9. PART NUMBER (DRAWING NO. PLUS DASH NO. PLUS SERIAL NO.) TO BE CLEARLY MARKED ON THE PART ITSELF.

ITEM NO.	QTY.	DESCRIPTION	MATERIAL
1	1	ROD, 2.50 DIA.	304 EZ CUT STAINLESS STEEL
PARTS LIST			
UNLESS OTHERWISE SPECIFIED: DIMENSIONS ARE IN INCHES -TOLERANCES-		CAD GENERATED DRAWING, DO NOT MANUALLY UPDATE DO NOT SCALE DRAWING	
DECIMALS .XX = +/- .03 .XXX = +/- .010		ANGULAR = +/- .30' SURFACE FINISH = 250	
FINISH	DESIGNED	SIGNATURE	DATE
	DRAWN	ROGER L. SMITH	1-21-98
	CHECKED	GERALD BUSTOS	1-21-98
	ENGR.	HARRY SALAZAR	----
	APPROVED	T. THOMPSON	----
PART NO.	D972957-1	DWG. NO.	D972957
		SCALE	1/1
		SIZE	D
		SHEET NO.	1 of 1
		REVISION	

HYTEC, INC

TITLE
**HAM CENTERING JIG
POINT CONTACT
DETAIL**

8 7 6 5 4 3 2 1

A

A