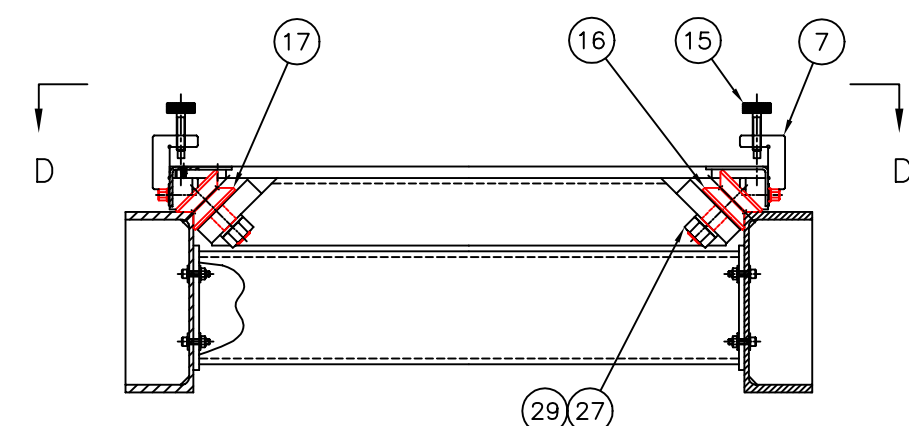
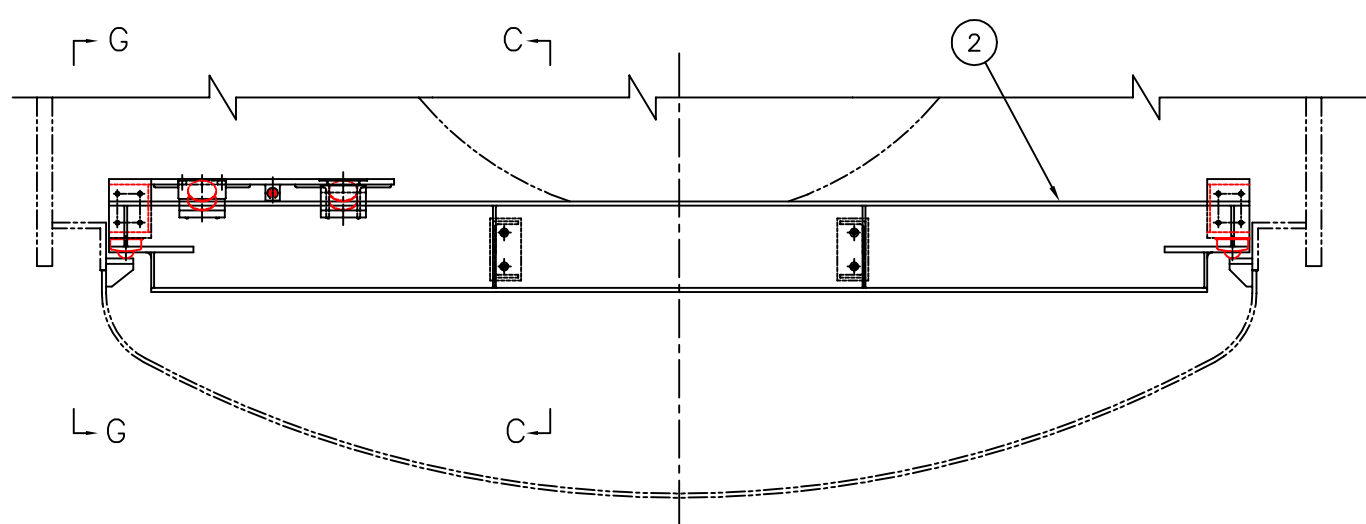
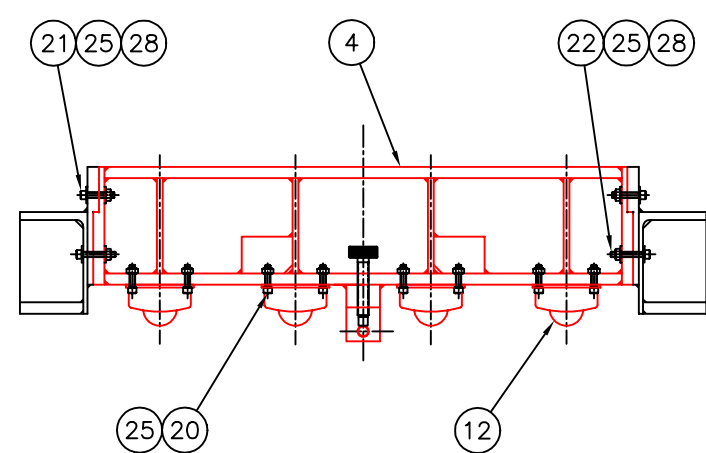
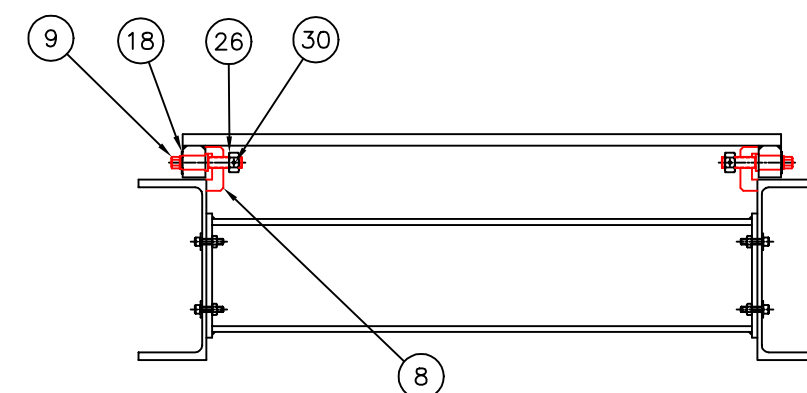
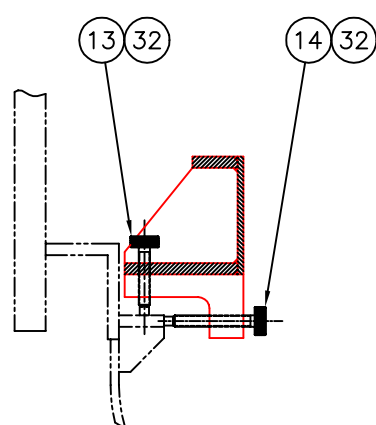
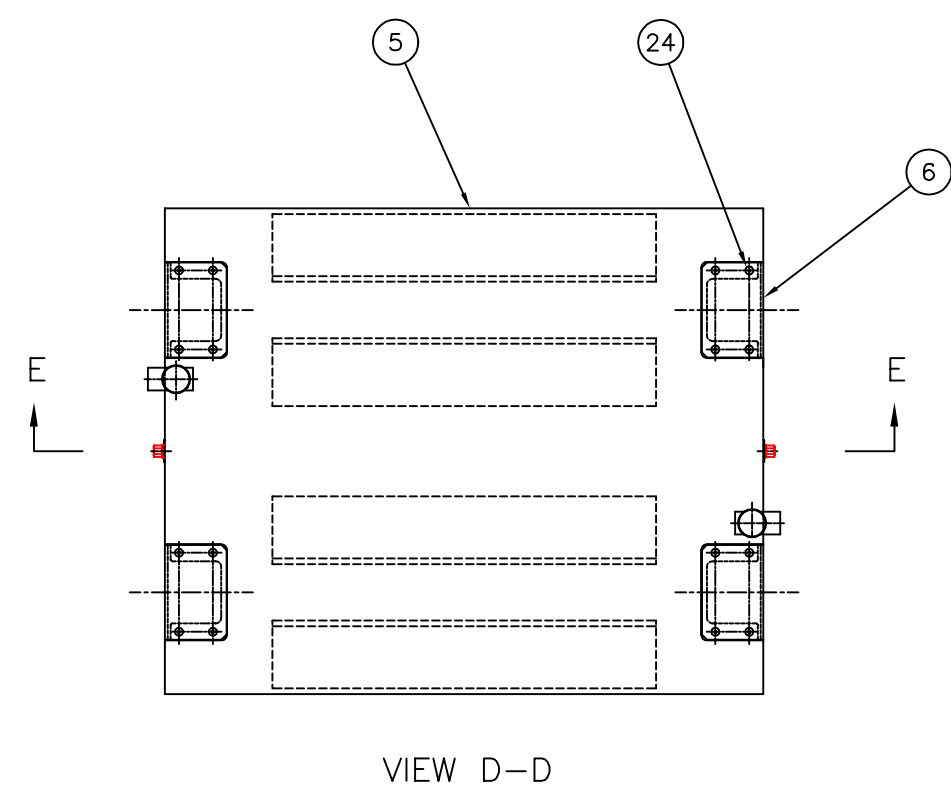
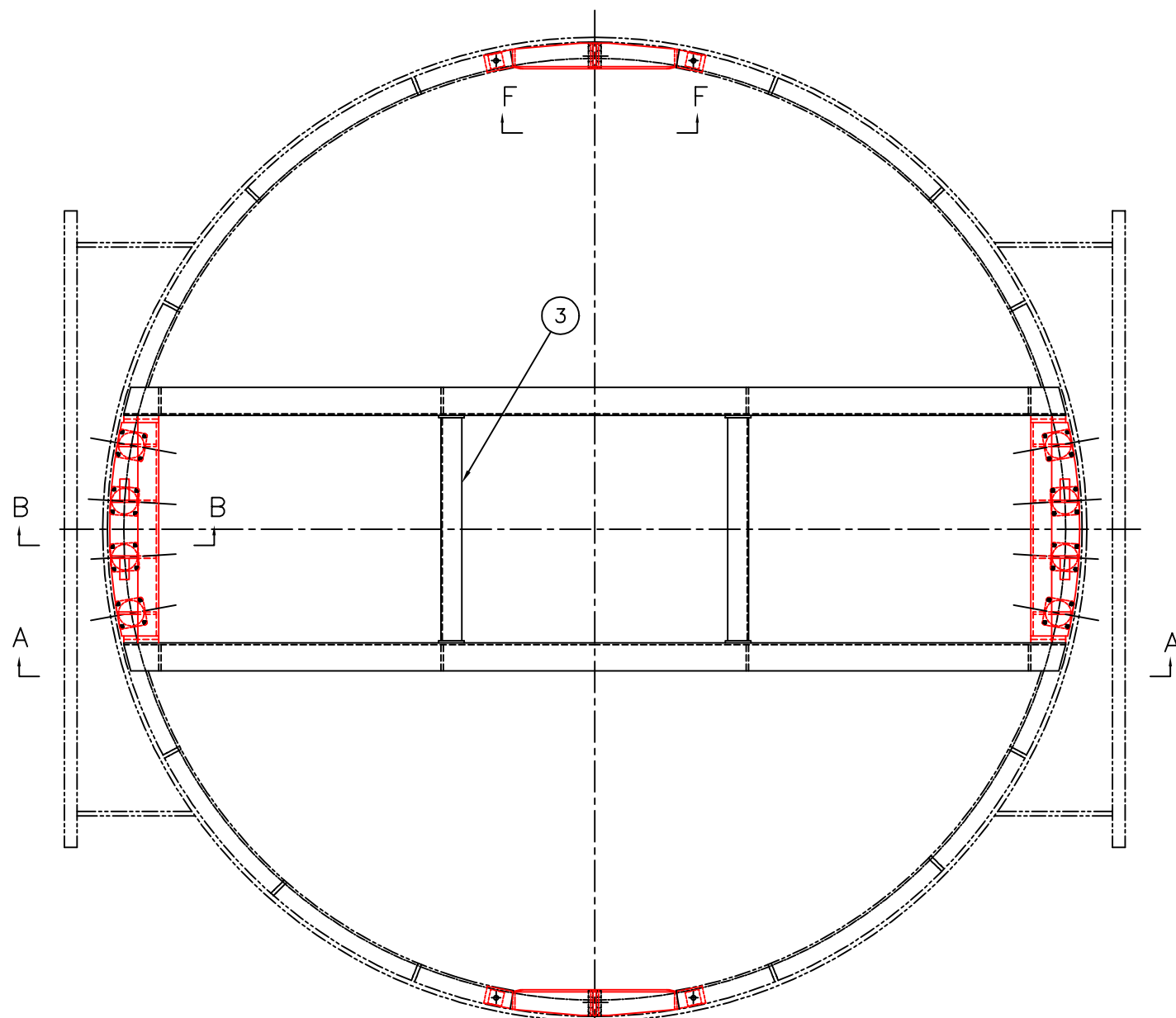
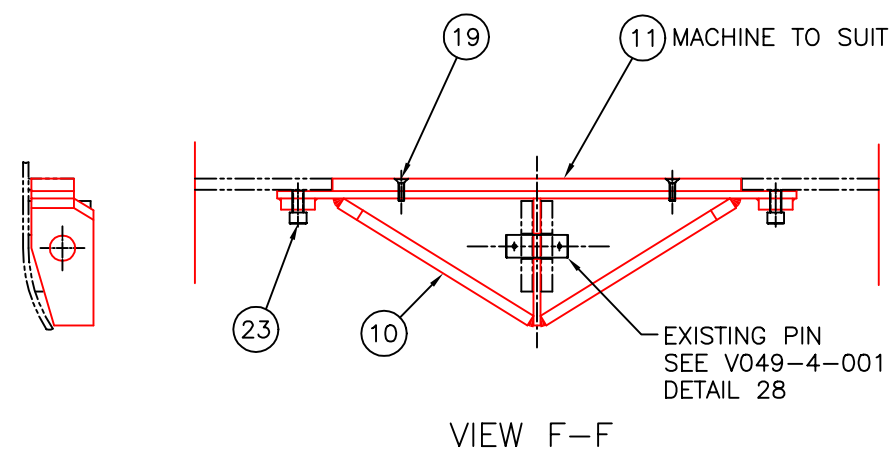
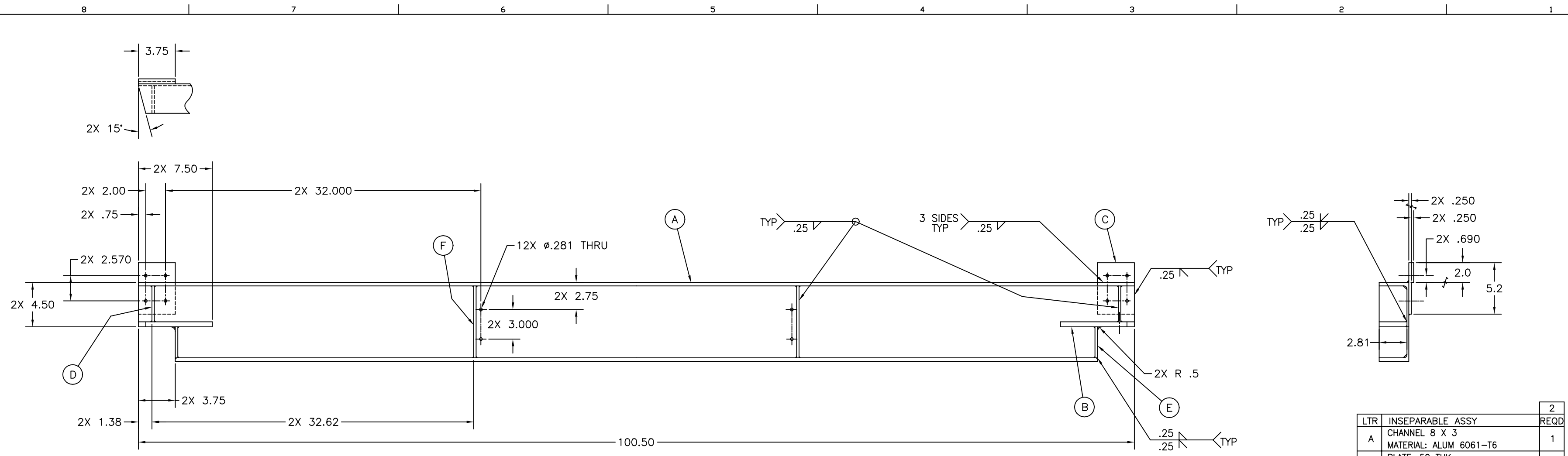


8	7	6	5	4	3	2	1																																																																																																																																																																										
						<table border="1"> <thead> <tr> <th>QTY REQD</th> <th>PART OR IDENTIFYING NO</th> <th>NOMENCLATURE OR DESCRIPTION</th> <th>MATERIAL SPECIFICATION</th> <th>ITEM NO</th> </tr> </thead> <tbody> <tr><td>16</td><td>1185-2CN164</td><td>HELICOIL</td><td>SST</td><td>33</td></tr> <tr><td>4</td><td>1185-8CN750</td><td>HELICOIL</td><td>SST</td><td>32</td></tr> <tr><td>4</td><td>1185-4CN375</td><td>HELICOIL</td><td>SST</td><td>31</td></tr> <tr><td>2</td><td></td><td>SPRING PIN ϕ.125 X .75 LG</td><td>SST</td><td>30</td></tr> <tr><td>4</td><td></td><td>LOCK WASHER ϕ.75, MEDIUM</td><td>SST</td><td>29</td></tr> <tr><td>64</td><td></td><td>WASHER ϕ.25, SERIES W</td><td>SST</td><td>28</td></tr> <tr><td>4</td><td></td><td>NUT .750-16UNC-2B</td><td>SST</td><td>27</td></tr> <tr><td>2</td><td></td><td>NUT .500-13UNC-2B</td><td>SST</td><td>26</td></tr> <tr><td>64</td><td></td><td>NUT .250-20UNC-2B</td><td>SST</td><td>25</td></tr> <tr><td>16</td><td></td><td>FL HD SCS #8 (.164)-32UNC-2A X .38 LG</td><td>SST</td><td>24</td></tr> <tr><td>4</td><td></td><td>SHCS .500-13UNC-2A X 1.00 LG</td><td>SST</td><td>23</td></tr> <tr><td>8</td><td></td><td>SHCS .250-20UNC-2A X 1.50 LG</td><td>SST</td><td>22</td></tr> <tr><td>8</td><td></td><td>SHCS .250-20UNC-2A X 1.25 LG</td><td>SST</td><td>21</td></tr> <tr><td>48</td><td></td><td>SHCS .250-20UNC-2A X 1.00 LG</td><td>SST</td><td>20</td></tr> <tr><td>4</td><td></td><td>FL HD CAP SCR .250-20 UNC-2A X 1.00 LG</td><td></td><td>19</td></tr> <tr><td>2</td><td>5133-62</td><td>RETAINING RING</td><td>TRUARC</td><td>18</td></tr> <tr><td>1</td><td>VLRE-2 1/2</td><td>ROLLER</td><td>OSBORN</td><td>17</td></tr> <tr><td>3</td><td>VLR-2 1/2</td><td>ROLLER</td><td>OSBORN</td><td>16</td></tr> <tr><td>2</td><td>CL-9-SHS-S</td><td>SWIVEL HEAD SCREW</td><td>CARRLANE</td><td>15</td></tr> <tr><td>2</td><td>CL-37-SHS-S</td><td>SWIVEL HEAD SCREW</td><td>CARRLANE</td><td>14</td></tr> <tr><td>2</td><td>CL-13-SHS-S</td><td>SWIVEL HEAD SCREW</td><td>CARRLANE</td><td>13</td></tr> <tr><td>8</td><td>5674K24</td><td>TRANSFER</td><td>McMASTER-CARR</td><td>12</td></tr> <tr><td>2</td><td></td><td>SPACER</td><td>ALUM 7075-T6</td><td>11</td></tr> <tr><td>2</td><td></td><td>BRIDGE</td><td>WELDMENT</td><td>10</td></tr> <tr><td>2</td><td></td><td>SCREW, CLAMP</td><td>302 SST</td><td>9</td></tr> <tr><td>2</td><td></td><td>CLAMP</td><td>302 SST</td><td>8</td></tr> <tr><td>2</td><td></td><td>CLAMP</td><td>302 SST</td><td>7</td></tr> <tr><td>4</td><td></td><td>COVER, WHEEL</td><td>ALUM 1100</td><td>6</td></tr> <tr><td>1</td><td></td><td>FRAME, CART</td><td>WELDMENT</td><td>5</td></tr> <tr><td>2</td><td></td><td>BEAM, CROSS</td><td>WELDMENT</td><td>4</td></tr> <tr><td>2</td><td></td><td>JOINT</td><td>WELDMENT</td><td>3</td></tr> <tr><td>2</td><td></td><td>BEAM</td><td>WELDMENT</td><td>2</td></tr> <tr><td></td><td></td><td>SUPPORT BEAM, ASSY</td><td></td><td>1</td></tr> </tbody> </table>		QTY REQD	PART OR IDENTIFYING NO	NOMENCLATURE OR DESCRIPTION	MATERIAL SPECIFICATION	ITEM NO	16	1185-2CN164	HELICOIL	SST	33	4	1185-8CN750	HELICOIL	SST	32	4	1185-4CN375	HELICOIL	SST	31	2		SPRING PIN ϕ .125 X .75 LG	SST	30	4		LOCK WASHER ϕ .75, MEDIUM	SST	29	64		WASHER ϕ .25, SERIES W	SST	28	4		NUT .750-16UNC-2B	SST	27	2		NUT .500-13UNC-2B	SST	26	64		NUT .250-20UNC-2B	SST	25	16		FL HD SCS #8 (.164)-32UNC-2A X .38 LG	SST	24	4		SHCS .500-13UNC-2A X 1.00 LG	SST	23	8		SHCS .250-20UNC-2A X 1.50 LG	SST	22	8		SHCS .250-20UNC-2A X 1.25 LG	SST	21	48		SHCS .250-20UNC-2A X 1.00 LG	SST	20	4		FL HD CAP SCR .250-20 UNC-2A X 1.00 LG		19	2	5133-62	RETAINING RING	TRUARC	18	1	VLRE-2 1/2	ROLLER	OSBORN	17	3	VLR-2 1/2	ROLLER	OSBORN	16	2	CL-9-SHS-S	SWIVEL HEAD SCREW	CARRLANE	15	2	CL-37-SHS-S	SWIVEL HEAD SCREW	CARRLANE	14	2	CL-13-SHS-S	SWIVEL HEAD SCREW	CARRLANE	13	8	5674K24	TRANSFER	McMASTER-CARR	12	2		SPACER	ALUM 7075-T6	11	2		BRIDGE	WELDMENT	10	2		SCREW, CLAMP	302 SST	9	2		CLAMP	302 SST	8	2		CLAMP	302 SST	7	4		COVER, WHEEL	ALUM 1100	6	1		FRAME, CART	WELDMENT	5	2		BEAM, CROSS	WELDMENT	4	2		JOINT	WELDMENT	3	2		BEAM	WELDMENT	2			SUPPORT BEAM, ASSY		1
QTY REQD	PART OR IDENTIFYING NO	NOMENCLATURE OR DESCRIPTION	MATERIAL SPECIFICATION	ITEM NO																																																																																																																																																																													
16	1185-2CN164	HELICOIL	SST	33																																																																																																																																																																													
4	1185-8CN750	HELICOIL	SST	32																																																																																																																																																																													
4	1185-4CN375	HELICOIL	SST	31																																																																																																																																																																													
2		SPRING PIN ϕ .125 X .75 LG	SST	30																																																																																																																																																																													
4		LOCK WASHER ϕ .75, MEDIUM	SST	29																																																																																																																																																																													
64		WASHER ϕ .25, SERIES W	SST	28																																																																																																																																																																													
4		NUT .750-16UNC-2B	SST	27																																																																																																																																																																													
2		NUT .500-13UNC-2B	SST	26																																																																																																																																																																													
64		NUT .250-20UNC-2B	SST	25																																																																																																																																																																													
16		FL HD SCS #8 (.164)-32UNC-2A X .38 LG	SST	24																																																																																																																																																																													
4		SHCS .500-13UNC-2A X 1.00 LG	SST	23																																																																																																																																																																													
8		SHCS .250-20UNC-2A X 1.50 LG	SST	22																																																																																																																																																																													
8		SHCS .250-20UNC-2A X 1.25 LG	SST	21																																																																																																																																																																													
48		SHCS .250-20UNC-2A X 1.00 LG	SST	20																																																																																																																																																																													
4		FL HD CAP SCR .250-20 UNC-2A X 1.00 LG		19																																																																																																																																																																													
2	5133-62	RETAINING RING	TRUARC	18																																																																																																																																																																													
1	VLRE-2 1/2	ROLLER	OSBORN	17																																																																																																																																																																													
3	VLR-2 1/2	ROLLER	OSBORN	16																																																																																																																																																																													
2	CL-9-SHS-S	SWIVEL HEAD SCREW	CARRLANE	15																																																																																																																																																																													
2	CL-37-SHS-S	SWIVEL HEAD SCREW	CARRLANE	14																																																																																																																																																																													
2	CL-13-SHS-S	SWIVEL HEAD SCREW	CARRLANE	13																																																																																																																																																																													
8	5674K24	TRANSFER	McMASTER-CARR	12																																																																																																																																																																													
2		SPACER	ALUM 7075-T6	11																																																																																																																																																																													
2		BRIDGE	WELDMENT	10																																																																																																																																																																													
2		SCREW, CLAMP	302 SST	9																																																																																																																																																																													
2		CLAMP	302 SST	8																																																																																																																																																																													
2		CLAMP	302 SST	7																																																																																																																																																																													
4		COVER, WHEEL	ALUM 1100	6																																																																																																																																																																													
1		FRAME, CART	WELDMENT	5																																																																																																																																																																													
2		BEAM, CROSS	WELDMENT	4																																																																																																																																																																													
2		JOINT	WELDMENT	3																																																																																																																																																																													
2		BEAM	WELDMENT	2																																																																																																																																																																													
		SUPPORT BEAM, ASSY		1																																																																																																																																																																													
						<table border="1"> <thead> <tr> <th>UNLESS OTHERWISE SPECIFIED</th> <th>INITIAL RELEASE</th> <th>D980084</th> <th>KABOT</th> <th>4-22-98</th> </tr> </thead> <tbody> <tr> <td>DO NOT SCALE THIS DRAWING</td> <td>00</td> <td></td> <td>CDI-CS</td> <td>03-10-98</td> </tr> <tr> <td>USED ON</td> <td>REV</td> <td>DESCRIPTION</td> <td>DCN NUMBER</td> <td>DRWN DATE</td> </tr> <tr> <td>NEXT ASSY:</td> <td></td> <td>ISSUE DESCRIPTION</td> <td></td> <td>SCALE NONE</td> </tr> </tbody> </table>		UNLESS OTHERWISE SPECIFIED	INITIAL RELEASE	D980084	KABOT	4-22-98	DO NOT SCALE THIS DRAWING	00		CDI-CS	03-10-98	USED ON	REV	DESCRIPTION	DCN NUMBER	DRWN DATE	NEXT ASSY:		ISSUE DESCRIPTION		SCALE NONE																																																																																																																																																						
UNLESS OTHERWISE SPECIFIED	INITIAL RELEASE	D980084	KABOT	4-22-98																																																																																																																																																																													
DO NOT SCALE THIS DRAWING	00		CDI-CS	03-10-98																																																																																																																																																																													
USED ON	REV	DESCRIPTION	DCN NUMBER	DRWN DATE																																																																																																																																																																													
NEXT ASSY:		ISSUE DESCRIPTION		SCALE NONE																																																																																																																																																																													
						<table border="1"> <thead> <tr> <th>DWG. NO.</th> <th>DESCRIPTION</th> <th>DWG. NO.</th> <th>DESCRIPTION</th> <th>SCALE</th> <th>SIZE</th> <th>DWG. NO.</th> <th>SHEET</th> </tr> </thead> <tbody> <tr> <td></td> <td>REFERENCE DRAWINGS</td> <td></td> <td></td> <td>1/8" = 1"</td> <td>E</td> <td>D980182-A</td> <td>1 OF 6</td> </tr> </tbody> </table>		DWG. NO.	DESCRIPTION	DWG. NO.	DESCRIPTION	SCALE	SIZE	DWG. NO.	SHEET		REFERENCE DRAWINGS			1/8" = 1"	E	D980182-A	1 OF 6																																																																																																																																																										
DWG. NO.	DESCRIPTION	DWG. NO.	DESCRIPTION	SCALE	SIZE	DWG. NO.	SHEET																																																																																																																																																																										
	REFERENCE DRAWINGS			1/8" = 1"	E	D980182-A	1 OF 6																																																																																																																																																																										
						<p> LIGO CALIFORNIA INSTITUTE OF TECHNOLOGY MASSACHUSETTS INSTITUTE OF TECHNOLOGY SUPPORT BEAM </p>																																																																																																																																																																											

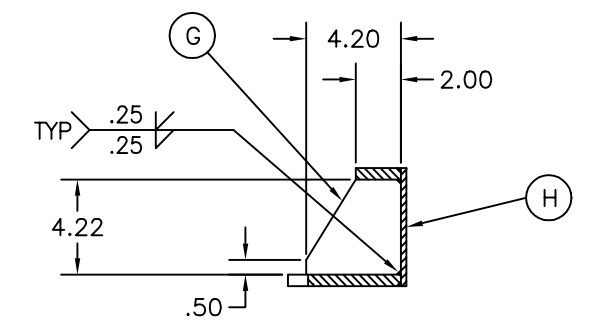
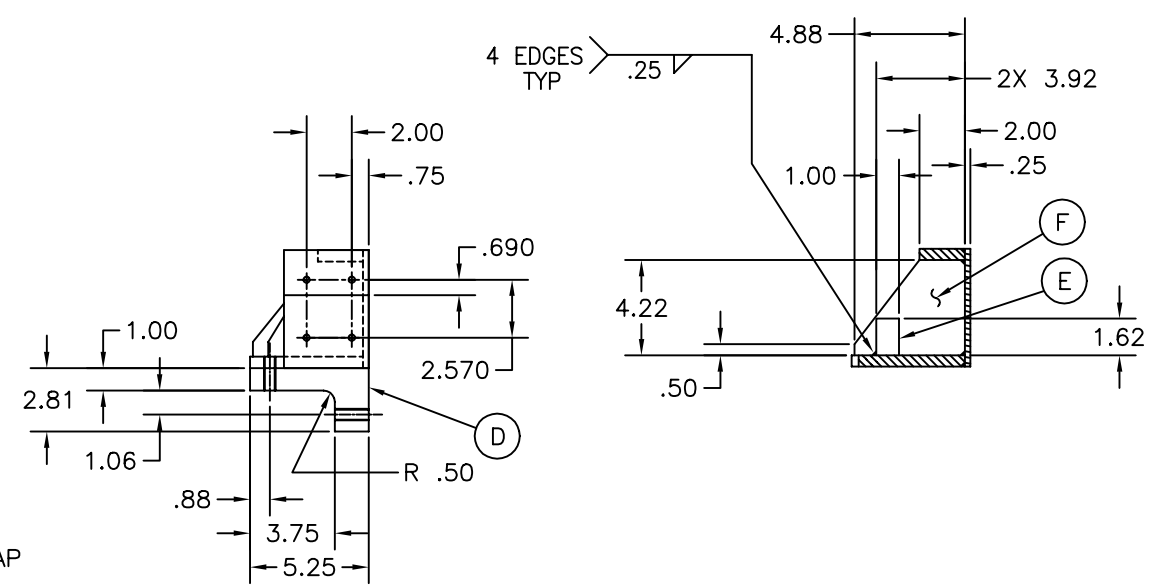
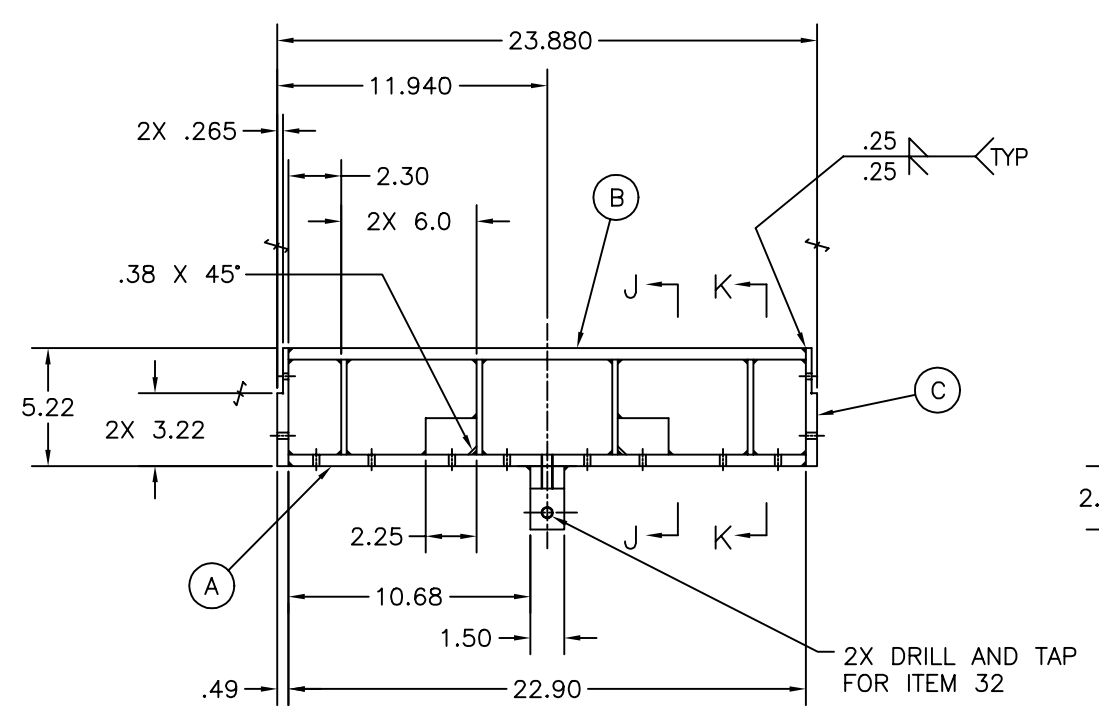


1

UNLESS OTHERWISE SPECIFIED								LIGO CALIFORNIA INSTITUTE OF TECHNOLOGY MASSACHUSETTS INSTITUTE OF TECHNOLOGY			
DIMENSIONS ARE IN INCHES								SUPPORT BEAM			
TOLERANCES								D980084			
ANGLES ± 0.5°								KABOT 4-22-98			
ONE PLACE DECIMAL ± 0.05								CDI-AMS 03-10-98			
TWO PLACE DECIMAL ± 0.02								DCN NUMBER			
THREE PLACE DECIMAL ± 0.005								DATE			
FINISHED SURFACE RND 125								SCALE 1/4			
EDGE BEHIND AND FILLET RND 200								SHEET 2			
REMOVE ALL BURRS								DWG. NO. D980182-A			
DO NOT SCALE THIS DRAWING											
USED ON											
NEXT ASS'Y											
REV											
DESCRIPTION											
ISSUE DESCRIPTION											
DWG. NO.											
DESCRIPTION											
DWG. NO.											
DESCRIPTION											
REFERENCE DRAWINGS											

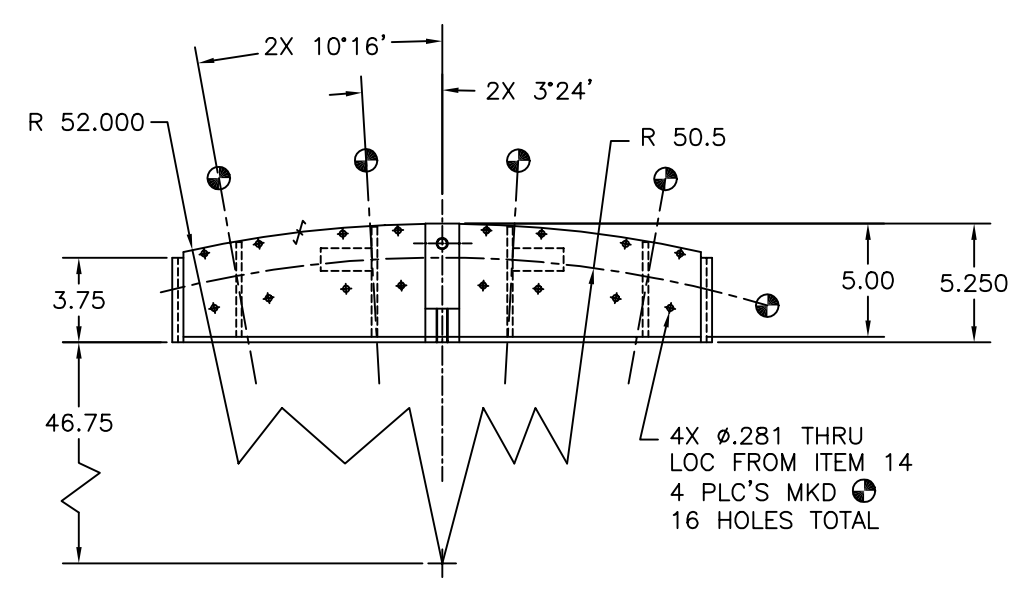


LTR	INSEPARABLE ASSY	REQD
	INSEPARABLE ASSY	2
A	CHANNEL 8 X 3 MATERIAL: ALUM 6061-T6	1
B	PLATE .50 THK MATERIAL: ALUM 6061-T6	2
C	PLATE .50 THK MATERIAL: ALUM 6061-T6	2
D	PLATE .25 THK MATERIAL: ALUM 6061-T6	2
E	PLATE .25 THK MATERIAL: ALUM 6061-T6	2
F	PLATE .25 THK MATERIAL: ALUM 6061-T6	2



SECTION J-J

SECTION K-K



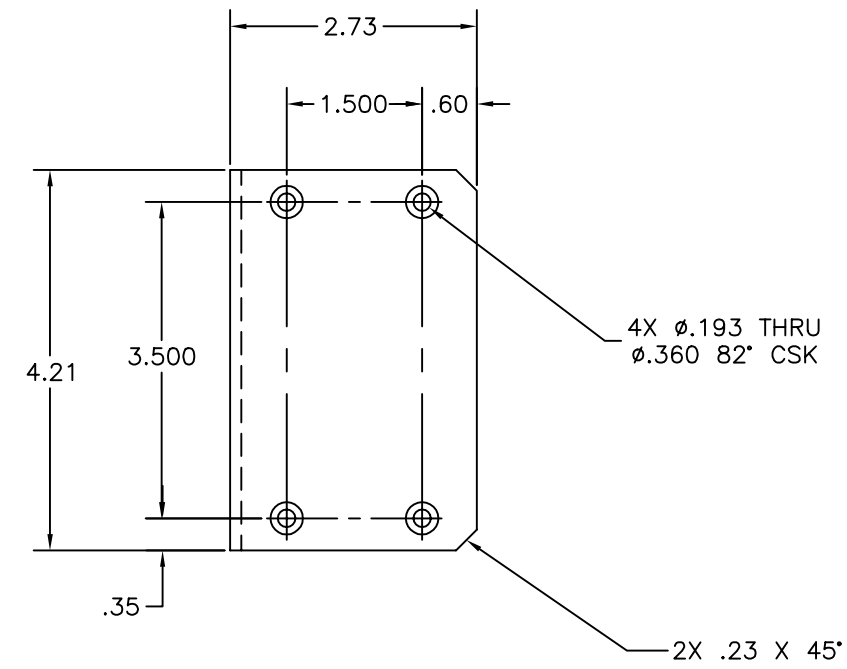
LTR	INSEPARABLE ASSY	REQD
	INSEPARABLE ASSY	4
A	PLATE .50 THK MATERIAL: ALUM 6061-T6	1
B	PLATE .50 THK MATERIAL: ALUM 6061-T6	1
C	PLATE .50 THK MATERIAL: ALUM 6061-T6	2
D	PLATE 1.50 THK MATERIAL: ALUM 6061-T6	1
E	PLATE 1.00 THK MATERIAL: ALUM 6061-T6	2
F	PLATE .25 THK MATERIAL: ALUM 6061-T6	2
G	PLATE .25 THK MATERIAL: ALUM 6061-T6	2
H	PLATE .25 THK MATERIAL: ALUM 6061-T6	1

UNLESS OTHERWISE SPECIFIED
DIMENSIONS ARE IN INCHES
TOLERANCES:
ANGLES ± .05°
DIM PLACE DECIMAL ± .005
TWO PLACE DECIMAL ± .010
THREE PLACE DECIMAL ± .005
FINISHED SURFACE RND 125
EDGE BREAKS AND FILLET RND .030
REMOVE ALL BURRS
DO NOT SCALE THIS DRAWING
USED ON
NEXT ASSY:

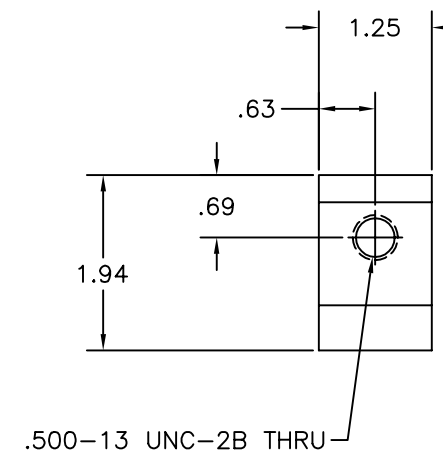
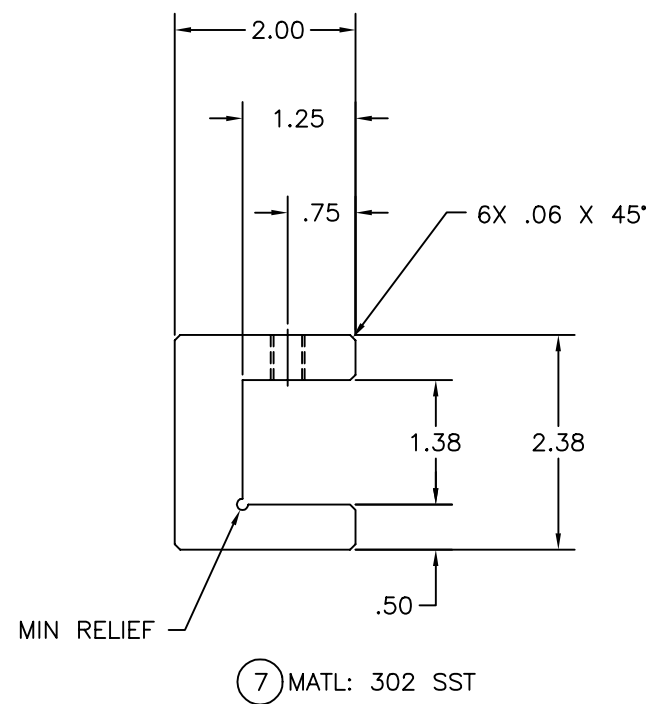
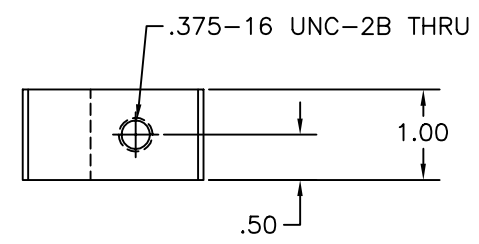
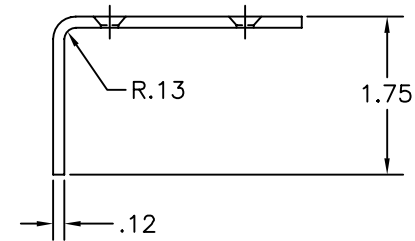
REV	DESCRIPTION	DCN NUMBER	DATE
A	INITIAL RELEASE	D980084	KABOT 4-22-98
00	PRE-RELEASE	-	CDI-AMS 03-10-98
REV	DESCRIPTION	DCN NUMBER	DATE

DWG. NO.	DESCRIPTION	DWG. NO.	DESCRIPTION

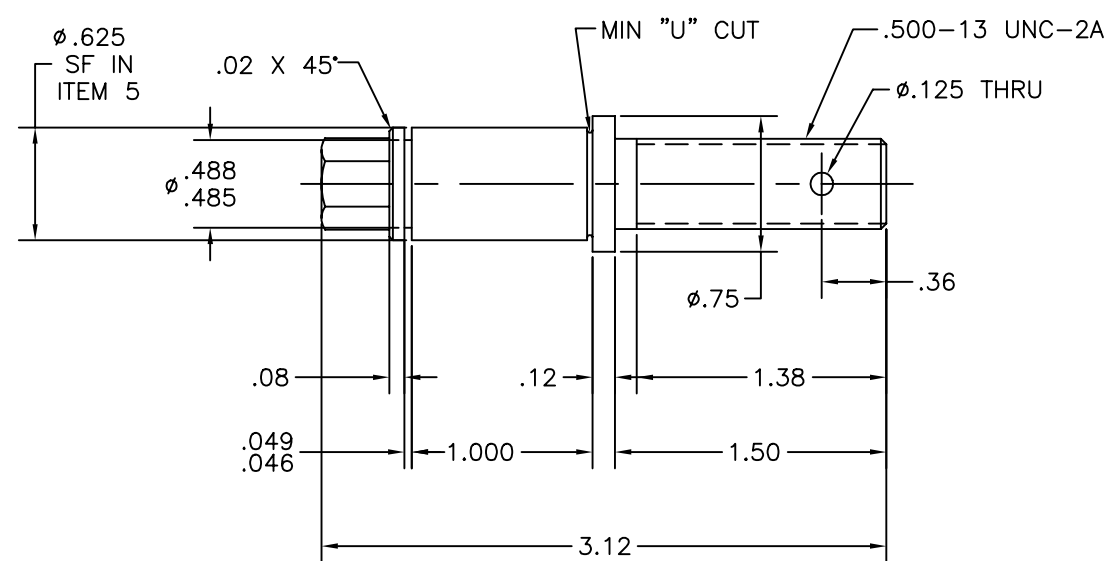
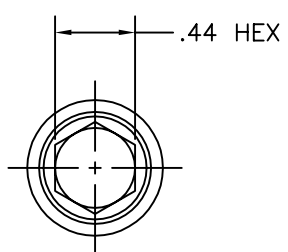
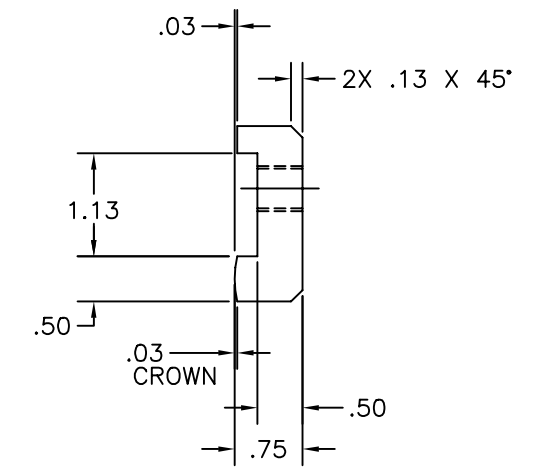
SCALE	1/4	SHEET	3
LIGO CALIFORNIA INSTITUTE OF TECHNOLOGY MASSACHUSETTS INSTITUTE OF TECHNOLOGY			
SUPPORT BEAM			
CAD FILE	01B2-3-A.DWG	DWG. NO.	D980182-A



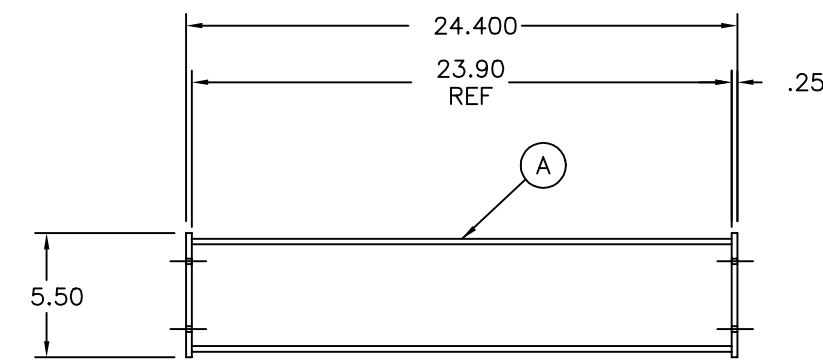
⑥ MATL: ALUM 1100



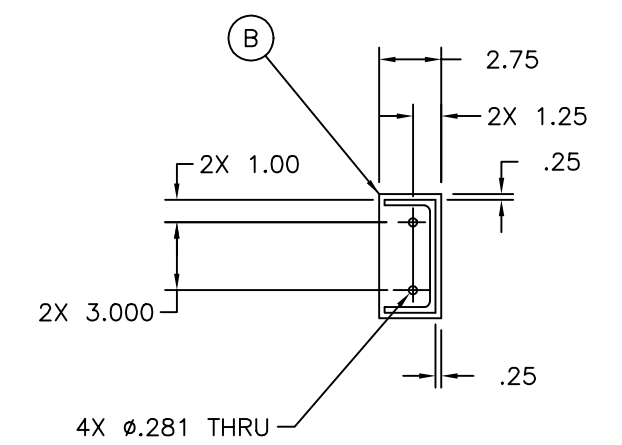
⑧ MATL: 302 SST



⑨ MATL: 302 SST
SCALE: 2:1

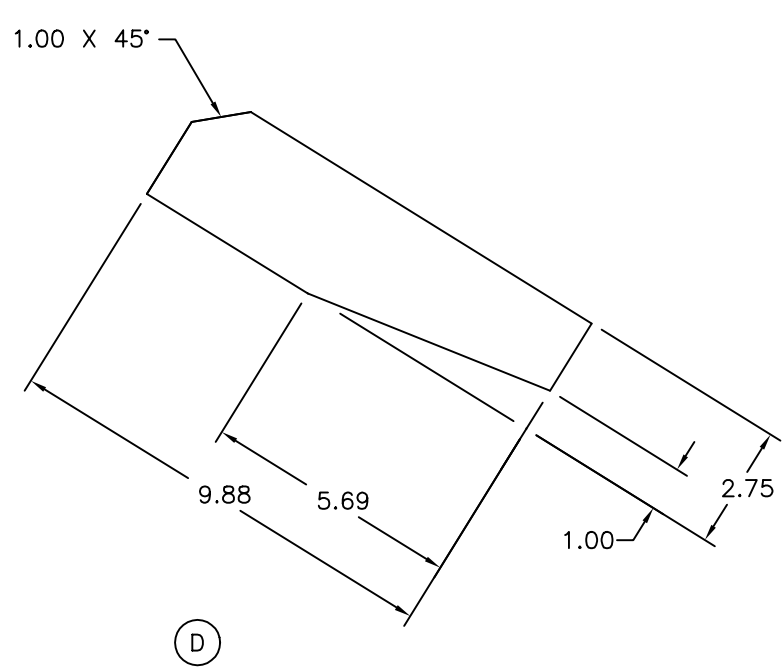
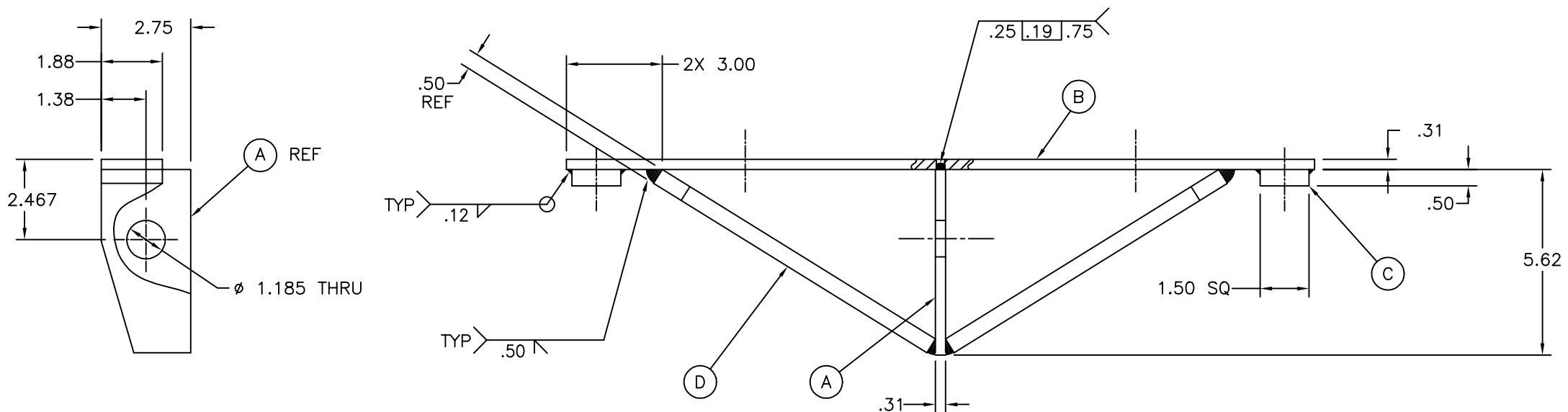
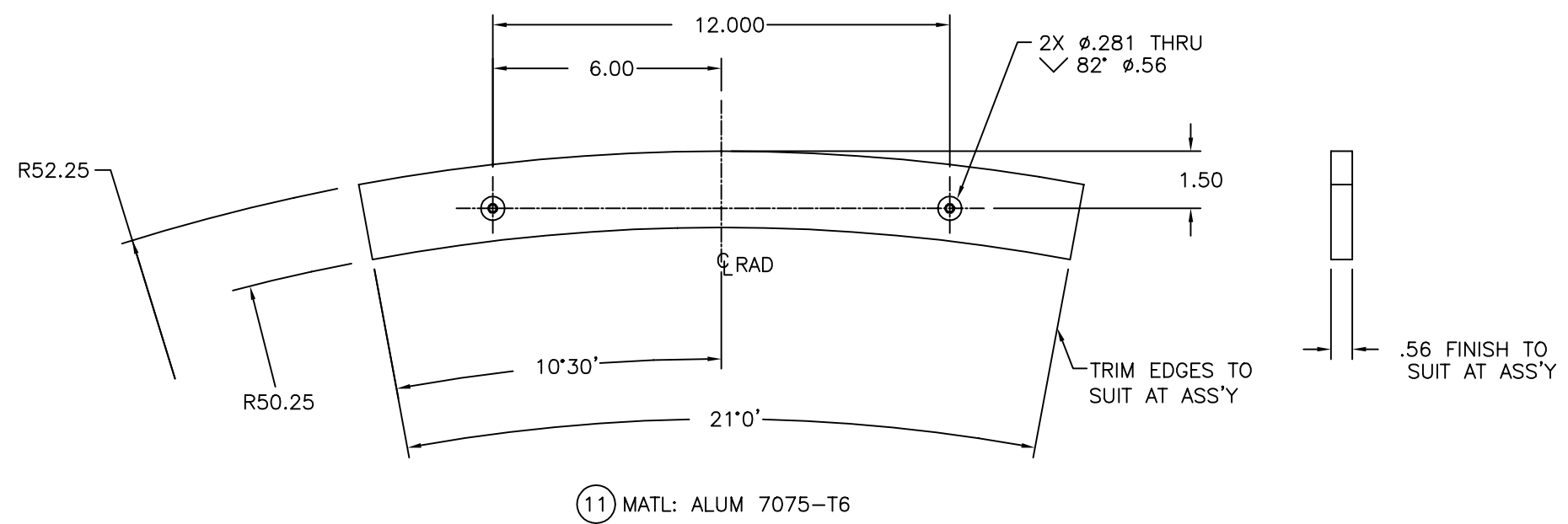
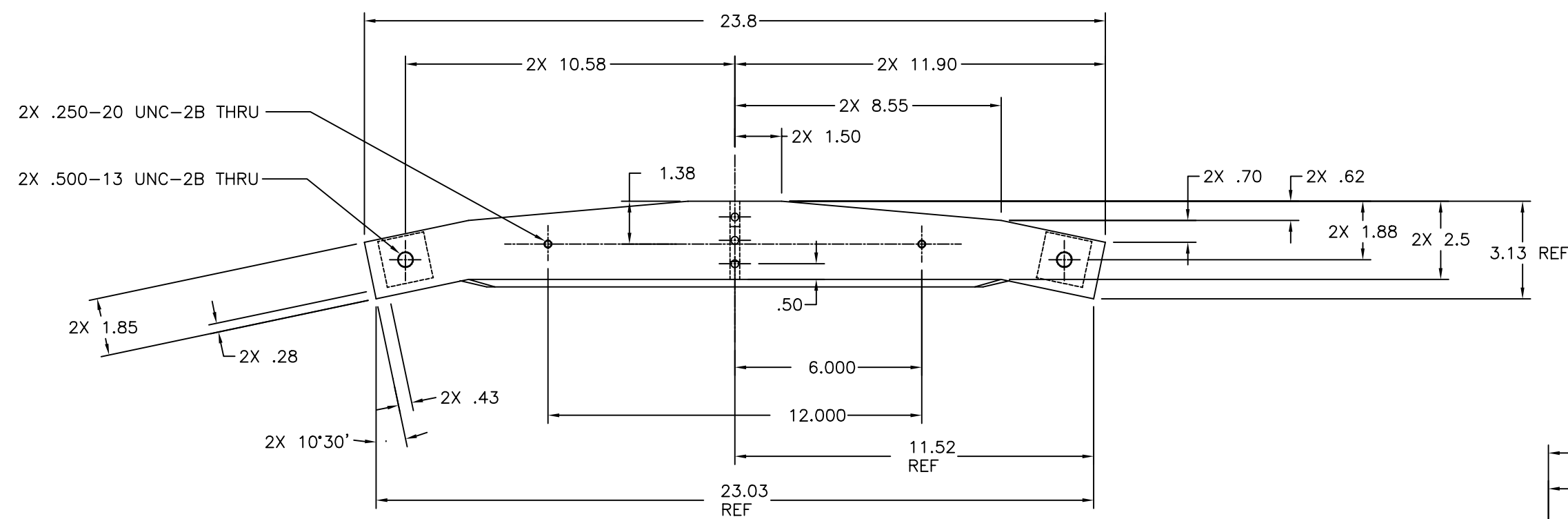


SCALE 1:4



LTR	INSEPARABLE ASSY	3
A	CHANNEL 5.00 X 2.25 MATERIAL: ALUM 6061-T6	1
B	PLATE .25 THK MATERIAL: ALUM 6061-T6	2

UNLESS OTHERWISE SPECIFIED				CALIFORNIA INSTITUTE OF TECHNOLOGY			
DIMENSIONS ARE IN INCHES				MASSACHUSETTS INSTITUTE OF TECHNOLOGY			
TOLERANCES				SUPPORT BEAM			
ANGLES 8 95°				D980084			
DIM PLACE DECIMAL # 255				INITIAL RELEASE			
TWO PLACE DECIMAL # 255				KABOT 4-22-98			
THREE PLACE DECIMAL # 255				PRE-RELEASE			
FINISHED SURFACE RND 125				CDI-CS 03-10-98			
EDGE BREAKS AND FILLET RND 250				DCN NUMBER			
REMOVE ALL BURRS				DRVN DATE			
DO NOT SCALE THIS DRAWING				SCALE			
USED DN				J1			
NEXT ASS'Y				SHEET			
DWG. NO.	DESCRIPTION	DWG. NO.	DESCRIPTION	REV	DESCRIPTION	ISSUE DESCRIPTION	SIZE
	REFERENCE DRAWINGS						D980182-A



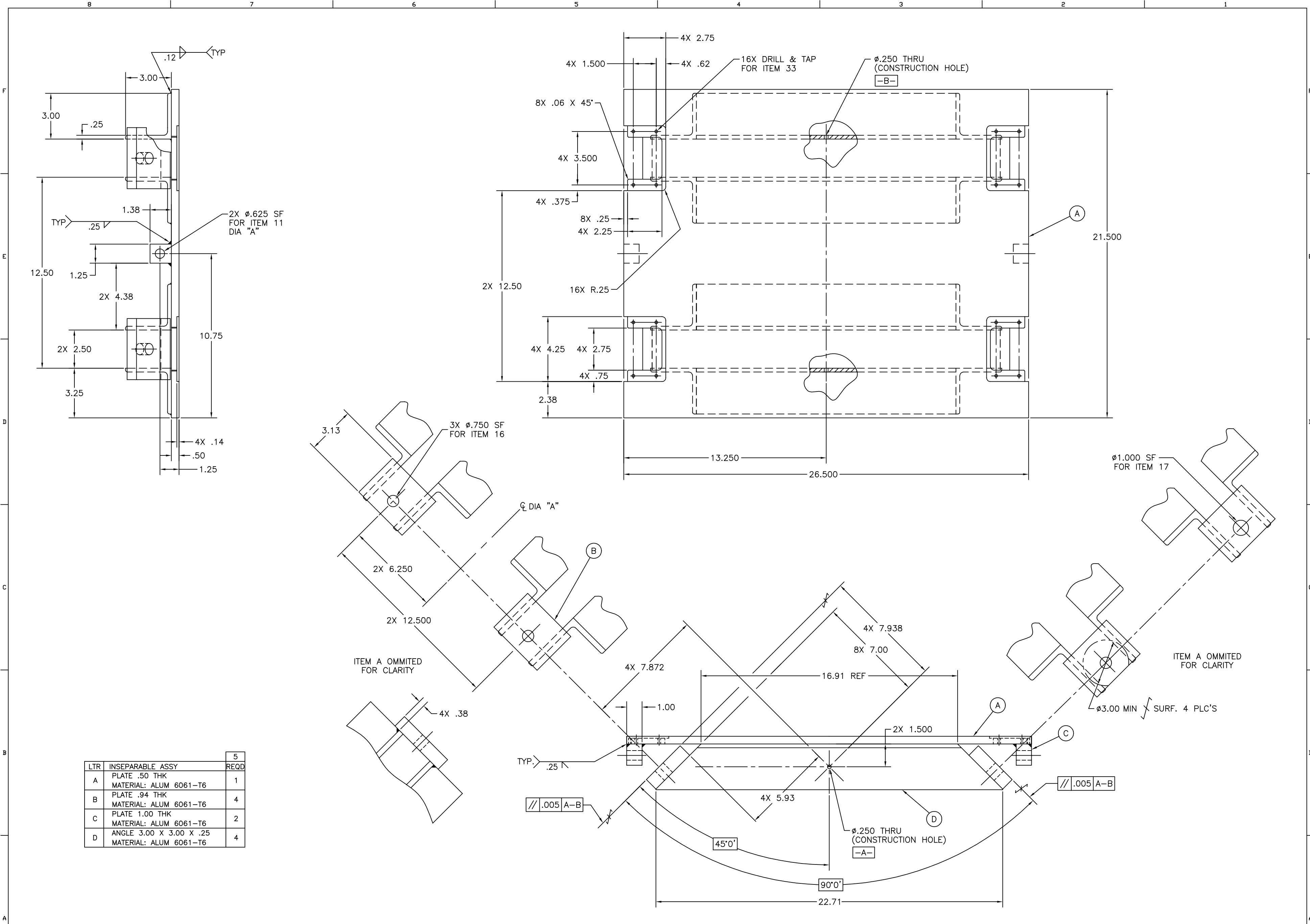
LTR	INSEPARABLE ASSY	12
	PLATE .31 THK	REQD
A	MATERIAL: 304 SST	1
B	PLATE .31 THK	1
C	MATERIAL: 304 SST	2
D	PLATE .50 THK	2
	MATERIAL: 304 SST	

UNLESS OTHERWISE SPECIFIED				DIMENSIONS ARE IN INCHES			
TOLERANCES				TOLERANCES			
ANGLES ± .05°				ANGLES ± .05°			
ONE PLACE DECIMAL ± .050				ONE PLACE DECIMAL ± .050			
TWO PLACE DECIMAL ± .010				TWO PLACE DECIMAL ± .010			
THREE PLACE DECIMAL ± .005				THREE PLACE DECIMAL ± .005			
FINISHED SURFACE RND 125				FINISHED SURFACE RND 125			
EDGE BREAKS AND FILLET RND .030				EDGE BREAKS AND FILLET RND .030			
REMOVE ALL BURRS				REMOVE ALL BURRS			
DO NOT SCALE THIS DRAWING				DO NOT SCALE THIS DRAWING			
USED ON				USED ON			
NEXT ASS'Y				NEXT ASS'Y			
REV		DESCRIPTION		DCN NUMBER		DATE	
A		INITIAL RELEASE		D980084		KABDT 4-22-98	
00		PRE-RELEASE				CDI-CS 03-10-98	
		ISSUE DESCRIPTION		SCALE		SHEET	
				1/2		5	

LIGO CALIFORNIA INSTITUTE OF TECHNOLOGY
 MASSACHUSETTS INSTITUTE OF TECHNOLOGY

SUPPORT BEAM

CAD FILE: 01B2-5-A.DWG
 SIZE: E
 DWG NO: D980182-A
 SCALE: 1/2
 SHEET: 5



LTR	INSEPARABLE ASSY	REQD
		5
A	PLATE .50 THK MATERIAL: ALUM 6061-T6	1
B	PLATE .94 THK MATERIAL: ALUM 6061-T6	4
C	PLATE 1.00 THK MATERIAL: ALUM 6061-T6	2
D	ANGLE 3.00 X 3.00 X .25 MATERIAL: ALUM 6061-T6	4

UNLESS OTHERWISE SPECIFIED
DIMENSIONS ARE IN INCHES
TOLERANCES
ANGLES ± .05°
DIM. PLACE DECIMAL & .000
THREE PLACE DECIMAL & .000
FINISHED SURFACE DIMS .010
EDGE DIMS AND FILET RAS .010
REMOVE ALL BURRS

REV	DESCRIPTION	DCN NUMBER	DRWN	DATE
A	INITIAL RELEASE	D980084	KABOT	04-22-98
00	PRE-RELEASE	-	CDI-AMS	03-10-98
REV	DESCRIPTION	DCN NUMBER	DRWN	DATE