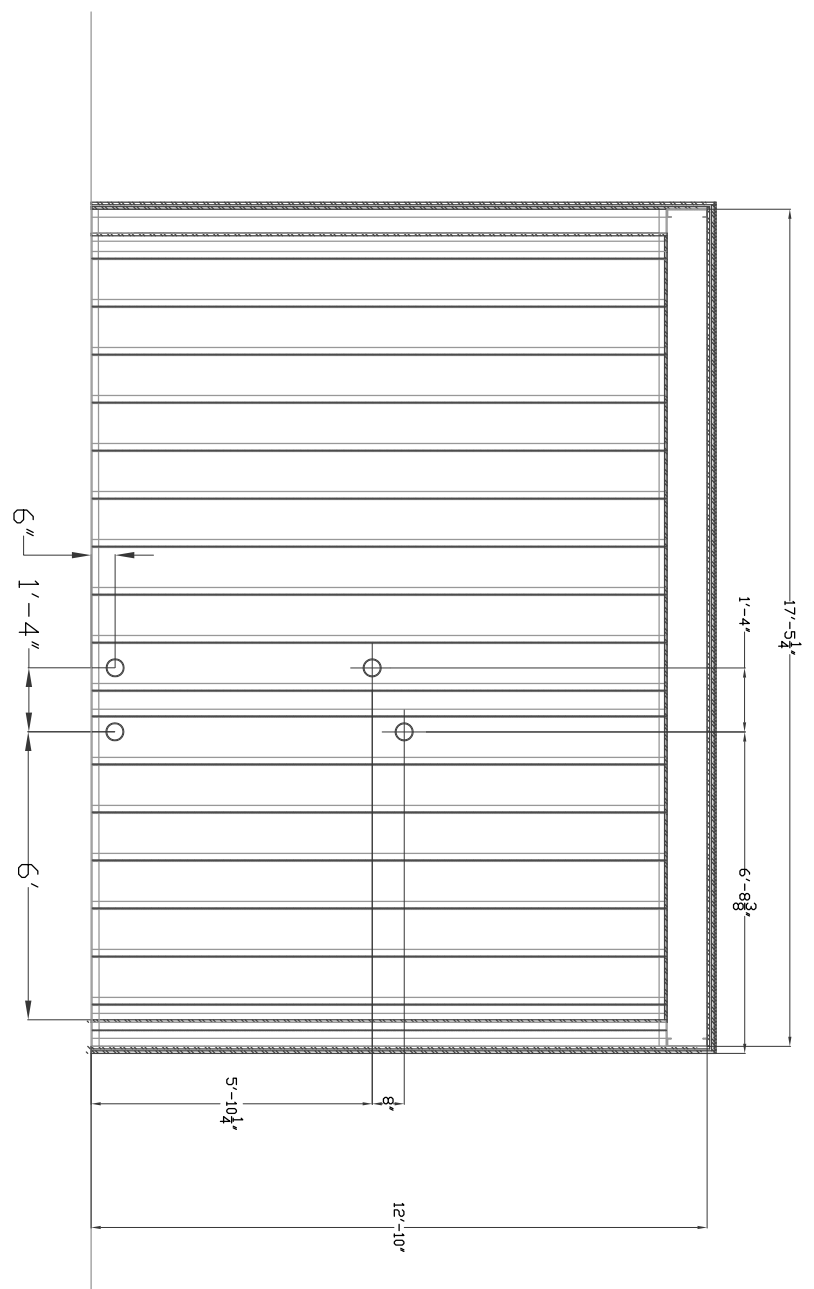
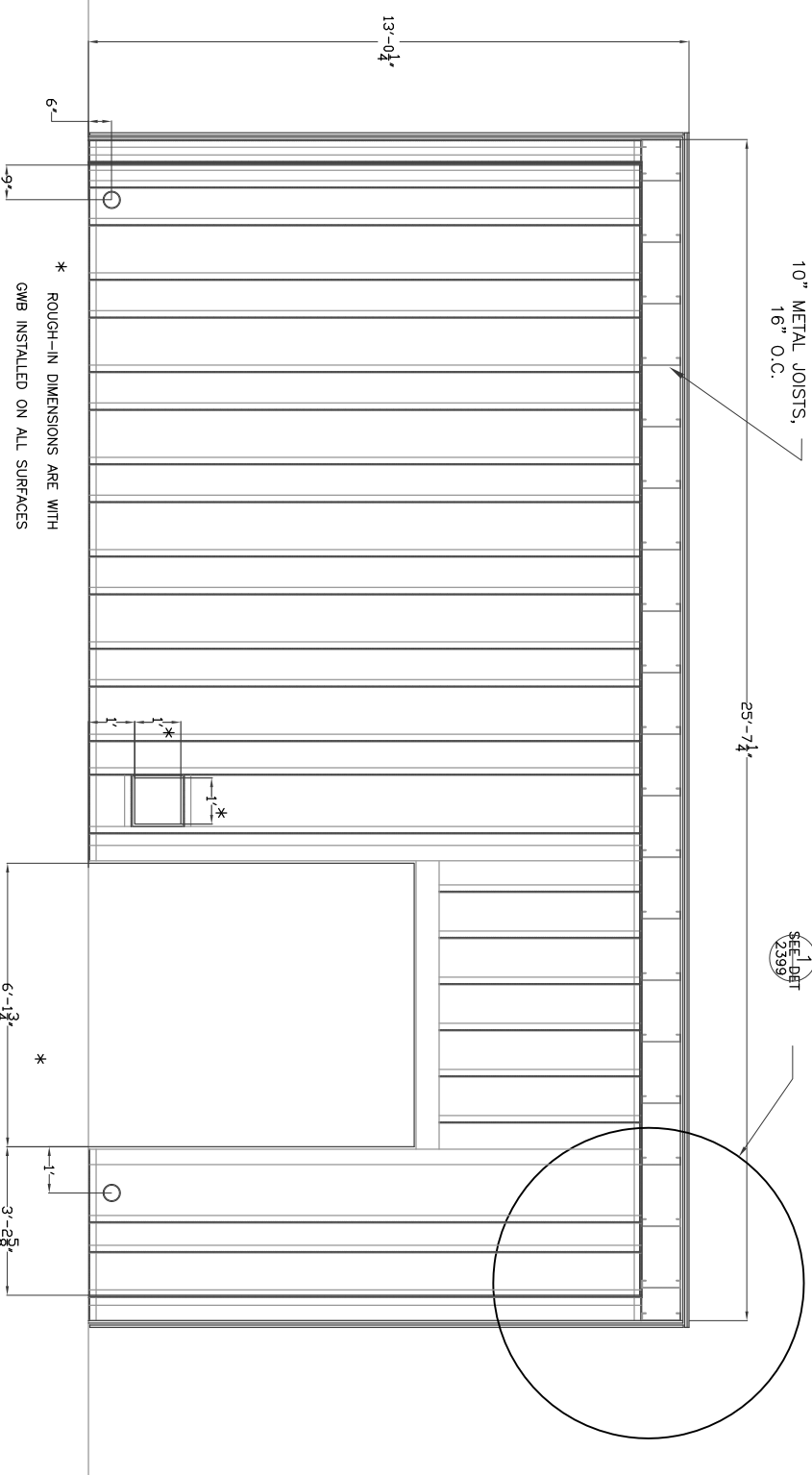


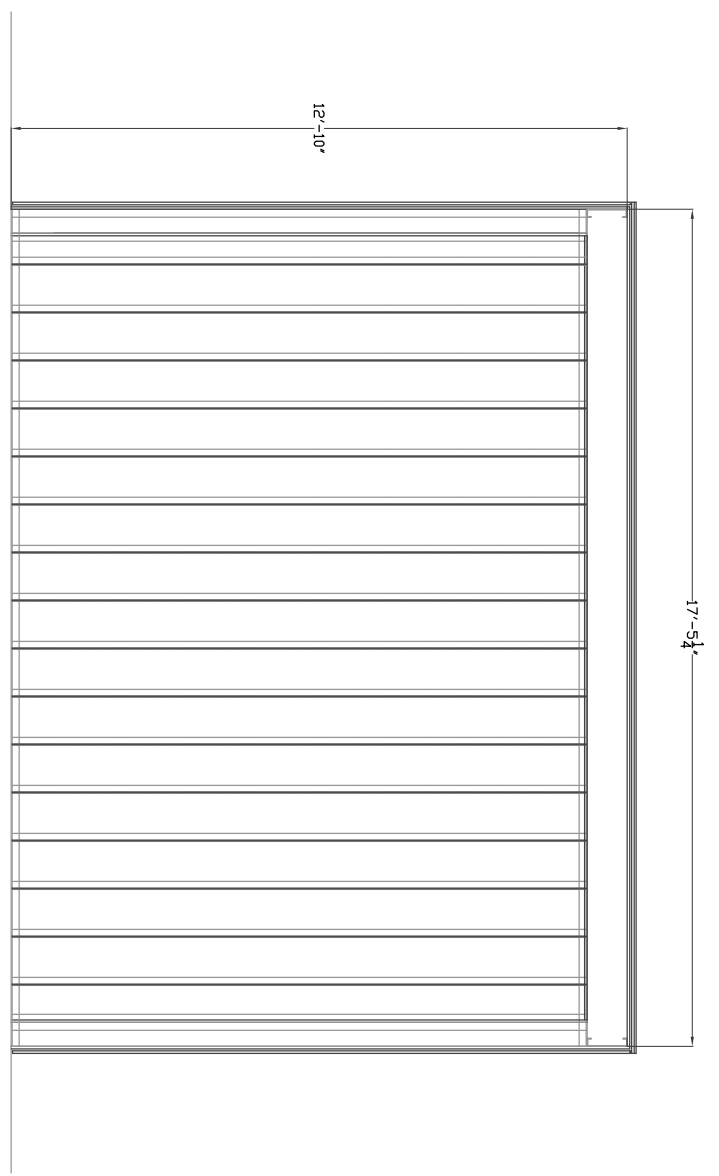
A
2399
WEST WALL ELEVATION
SCALE: 1/2" = 1'-0"



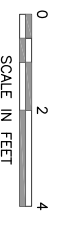
B
2399
SOUTH WALL ELEVATION
SCALE: 1/2" = 1'-0"



D
2399
EAST WALL ELEVATION
SCALE: 1/2" = 1'-0"



D
2399
NORTH WALL ELEVATION
SCALE: 1/2" = 1'-0"



DRAWING: LIGO-D1002411

PRINTED BY: GI on 11/4/2010 3:08 PM

CALIFORNIA INSTITUTE OF TECHNOLOGY
LIGO HANFORD OBSERVATORY
HIBBS ENGINEERING, INC.
KENNEWICK, WASHINGTON

H2 LASER AREA ENCLOSURE
FRAMING
ELEVATIONS

PROJECT NUMBER: 1036.01 CAD FILE: 1036H2

© 2010 Hibbs Engineering, Inc.

DRAWN BY: GLH
CHECKED BY:
DESIGN A/E DESIGN GM
HEI APPROVAL

REV No		DATE	BY	DESCRIPTION	APPROVED
v2	11/3/10	GLH		INCREASE ROOM LENGTH, UPDATE DIMENSIONS.	

DATE OF ISSUE