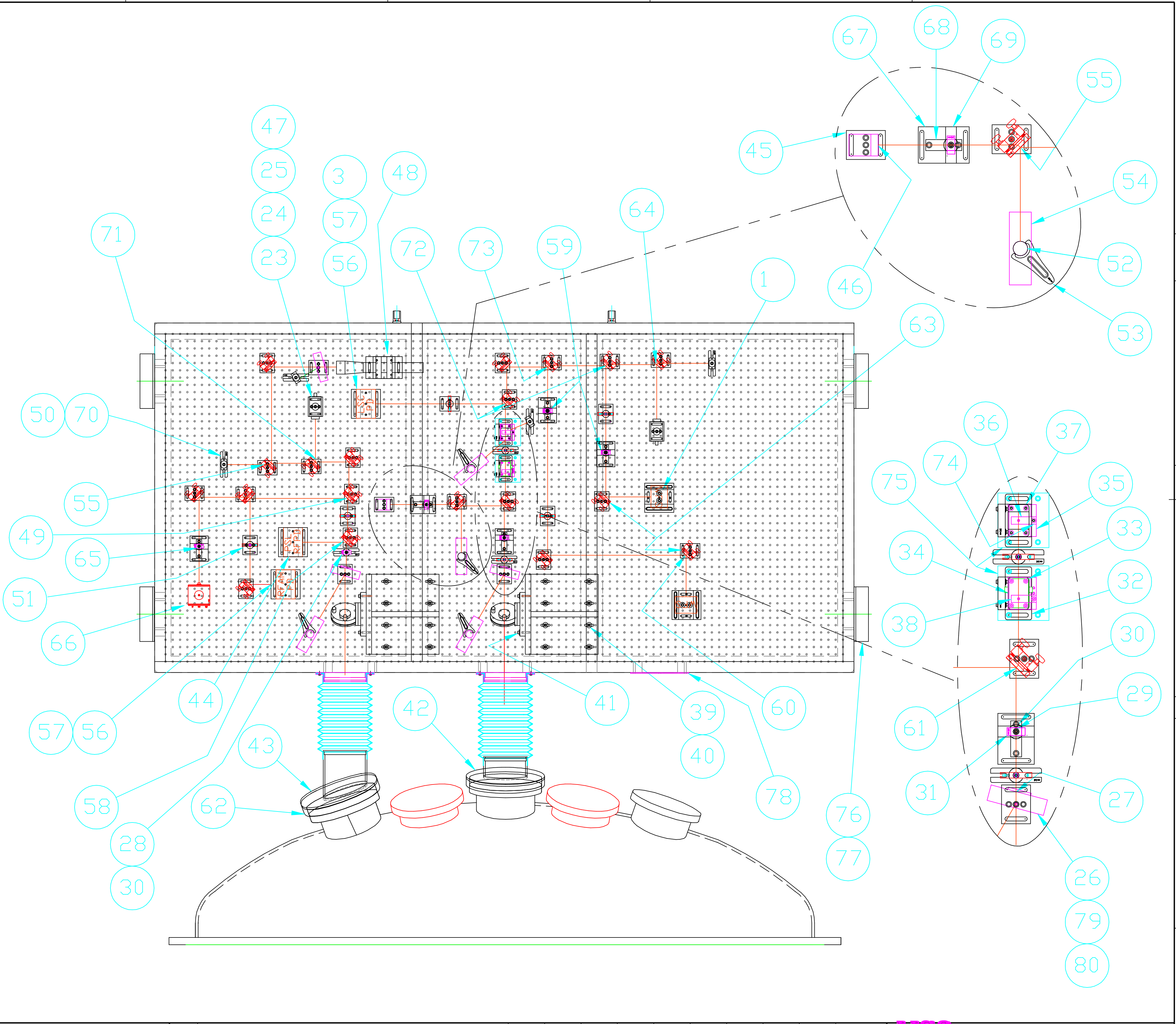
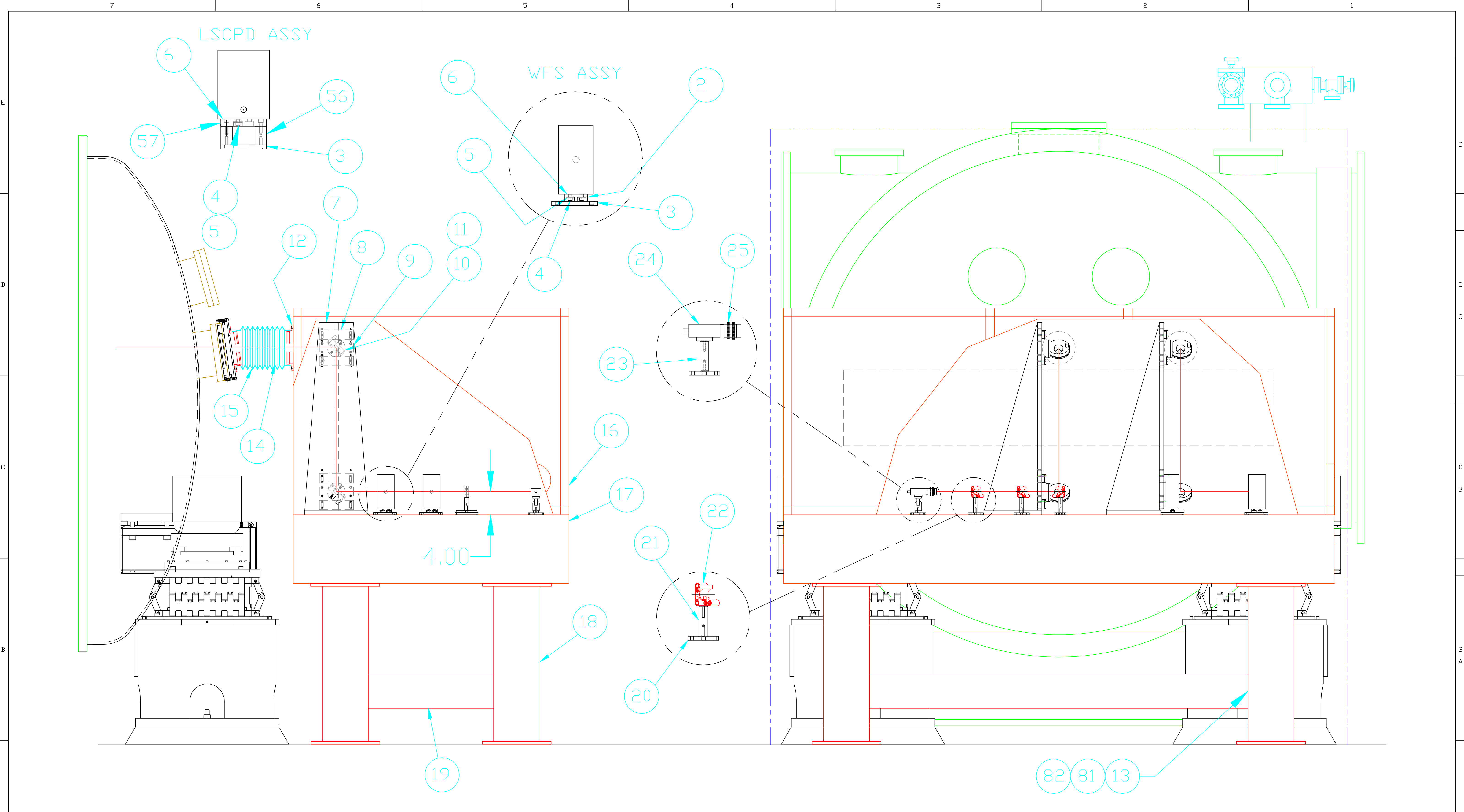


81	4	P1010	SPRING NUT	UNISTRUT
81	A/R	P1000	CHANNEL	UNISTRUT
80	3	710C-17'	17' CABLE	UNIBLITZ
79	3	D122	POWER SUPPLY	UNIBLITZ
78	1	D980469-A-D	COVER PLATE	-
77	8	D980468-A-D	FEEDTHRU PLATE	-
76	A/R	8694K89	SPONGE RUBBER STRIP, 2"W x .5"THK	MCMASTER-CARR
75	1	517-1100	BNC CONNECTOR	NEWARK
74	2	D980342-A-D	PRISM BLOCK	-
73	1	BS1-1064-50-1025-45P	BEAM SPLITTER	CVI
72	1	BS1-1064-98-1025-45P	BEAMSPITTER	CVI
71	1	W2-PW1-1025-C-1064-45S	LASER WINDOW	CVI
70	2	LB1	BEAM BLOCK	THORLABS
69	6	9025	TRACK CARRIER	NEW FOCUS
68	6	9022	TRACK	NEW FOCUS
67	6	9021	BASE PLATE	NEW FOCUS
66	1	1811-FS-AC	PHOTODETECTOR	NEW FOCUS
65	2	PLCX-25.4-64.4-C-1064	FOCUS LENS	CVI
64	1	W2-PW1-1025-C-1064-45P	LASER WINDOW	CVI
63	2	8807	MOTORIZED CENTER MOUNT	NEW FOCUS
62	2	D970197-A-D	VIEWPORT ADAPTER	-
61	1	BS1-1064-80-1025-45S	BEAMSPLITTER	CVI
60	6	5104	MIRROR	NEW FOCUS
59	2	BICC-25.4-77.6-C-1064	LENS	CVI
58	1	BS1-1064-50-1025-45S	BEAMSPITTER	CVI
57	1	D980340-A-D	LSC PHOTODIODE MOUNT	-
56	2	D980345-A-D	RISER BLOCK	-
55	3	BS1-1064-98-1025-45S	BEAMSPLITTER	CVI
54	3	BT500	BEAM DUMP	THORLABS
53	3	9909	HOLDING FORK	NEW FOCUS
52	3	9956	3.0" PEDESTAL	NEW FOCUS
51	7	ID-25	MOUNTED IRIS DIAPHRAGM	THORLABS
50	2	VPH-2	POST HOLDER	NEWPORT
49	1	BS1-1064-90-1025-45S	BEAMSPLITTER	CVI
48	1	33-6271	OPTICAL SPECTRUM ANALYZER	COHERENT
47	1	SM1C	CAMERA 'C' MOUNT ADAPTER	THORLABS
46	1	NDK01	ND FILTER KIT	THORLABS
45	1	PDA255	PHOTODETECTOR	THORLABS
44	1	TBD	PSL DIODE ASSEMBLY	-
43	1	D980339-A-D	VIEWPORT ADAPTER- END	-
42	1	D980338-A-D	VIEWPORT ADAPTER- MID	-
41	A/R	92196A197	8-32 x 3/4" SHCS	MCMASTER CARR
40	A/R	92141A029	1/4" FLAT WASHERS	MCMASTER CARR
39	32	92196A544	1/4-20 x 1.25 SHCS	MCMASTER CARR
38	1	D980337-A-D	EOS CONNECTOR	-
37	1	MGLB-12	BREWSTER ANGLE POLARIZER W. HOUSING	KARL LAMBRECT
36	1	D980344-A-D	POLARIZER CLAMP	-
35	1	D980343-A-D	POLARIZER MOUNT	-
34	1	3903-1064	ELECTRO-OPTIC SHUTTER	LASER METRICS
33	1	D980336-0-D	EOS MOUNT	-
32	1	9071	KINEMATIC STAGE	NEW FOCUS
31	7	D980335-0-D	PEDESTAL 2.250"	-
30	1	PLCX-25.4-515.1-C-1064	1016.7 FL LENS	CVI
29	7	LH100	LENS MOUNT	NEWPORT
28	6	9912	BASEPLATE	NEW FOCUS
27	2	D980334-A-D	SHUTTER PEDESTAL	-
26	3	VS25S27D	SAFETY SHUTTER	UNIBLITZ
25	2	ND10-A	CAMERA FILTER	THORLABS
24	2	XC-75	CAMERA	SONY
23	2	D980494-A-D	CAMERA MOUNT	-
22	18	U100-A28	MIRROR MOUNT	NEWPORT
21	24	D980333-A-D	2.635" PEDESTAL	-
20	26	B-2	2.0" BASE	NEWPORT
19	1	TBC-48	TIE BAR/CASTERS	NEWPORT
18	1	NN4-28-TC	FIXED LEG SYSTEM	NEWPORT
17	1	RS4000-48-12	TABLE	NEWPORT
16	1	D980332-A-D	ISC TABLE ENCLOSURE	-
15	2	D970198-A-D	BEAM TUBE	-
14	2	CT-6	BELLOWS	A & A MFG.
13	4	D990503-A-D	MOUNTING BRACKET, ENCLOSURE	-
12	2	D980206-A-D	SEAL MOUNT	-
11	4	Y1-1537-45-UNP	38 MM MIRROR	CVI
10	4	SL38.1BM	OPTIC MOUNT	NEWPORT
9	4	D980331-A-D	SPACER BLOCK	-
8	4	D980330-A-D	VERTICAL ADJUST PLATE	-
7	2	D980329-A-D	PERISCOPE SUPPORT STRUCTURE	-
6	A/R	7648A35	KAPTON INSULATION TAPE	MCMASTER-CARR
5	4	I7455-D-1	INSULATING BUSHING	ACCURATE SCREW MACH.
4	A/R	92196A542	1/4-20 x 1.0" LG SHCS	MCMASTER-CARR
3	6	B-3	3.0" BASE	NEWPORT
2	2	D980328-A-D	WFS BASEPLATE	-
1	2	D980012-A-D	WFS ASSEMBLY	-
REF	QTY	PART NO.	DESCRIPTION	SUPPLIER



UNLESS OTHERWISE SPECIFIED DIMENSIONS ARE IN INCHES		TOLERANCES: FRACTIONAL ± 1/16(.16) ANGULAR ± 1° TWO PLACE DECIMAL ± .01(.025) THREE PLACE DECIMAL ± .005(.013)		FINISHED SURFACE RMS 63 BREAK CORNERS IN: .02 REMOVE ALL BURRS		A INITIAL RELEASE 00 PRE-RELEASE		MASON 3/20/00 MASON 7/9/98		CAD FILE D980327-A-S1.dwg		SIZE DWG. NO. D980327-A-D						
DWG. NO.	DESCRIPTION	MATERIAL:	HEAT TREAT:	FINISH:	REV	DESCRIPTION	DCC	SYS	DET	CDS	VE	CC	BT	CHECK	DRWN	DATE	SCALE	SHEET
	REFERENCE DRAWINGS																1:16	1 of 2
		USED ON: -	NEXT ASS'Y: D980220-A-D															

LIGO
CALIFORNIA INSTITUTE OF TECHNOLOGY
MASSACHUSETTS INSTITUTE OF TECHNOLOGY
ID SENSING TABLE ASSEMBLY
WA-IOT7
MASON 3/20/00
MASON 7/9/98
D980327-A-S1.dwg
D980327-A-D
1:16
1 of 2



		UNLESS OTHERWISE SPECIFIED DIMENSIONS ARE IN INCHES													LIGO CALIFORNIA INSTITUTE OF TECHNOLOGY MASSACHUSETTS INSTITUTE OF TECHNOLOGY		
		TOLERANCES: FRACTIONAL ± 1/16(.16) ANGULAR ± 1° TWO PLACE DECIMAL ± .01(.025) THREE PLACE DECIMAL ± .005(.013)		FINISHED SURFACE RMS 63 BREAK CORNERS IN: .02 REMOVE ALL BURRS												ID SENSING TABLE ASSEMBLY WA-10T7	
		MATERIAL: _____		HEAT TREAT: _____		FINISH: _____		A INITIAL RELEASE				MASDN 3/22/00		CAD FILE: D980327-A-S2.dwg D SIZE: DWG. NO. D980327-A-D SCALE: 1:16 SHEET: 2 of 2			
DWG. NO.		DESCRIPTION		USED QTY: -		NEXT ASS'Y: D980220-A-D		00 PRE-RELEASE				MASDN 7/9/98					
		REFERENCE DRAWINGS						REV		DESCRIPTION		DCC SYS DET CDS VE CC BT CHECK DRWN DATE					