


REF	DEVICE #	CHAMBER	NOZZLE	WL/PL(IN)	VP DIA	BX	MOUNT	FUNCTION	VP PART #
A1		LH1	B2F1	635/85.1	7 3/4	10X	FLOOR	MMT3 TX	ISI 4.9722012
A2		LH1	B2F2	635	7 3/4	-	FLOOR	MMT3 RX	ISI 4.9722012
A3		LH2	A1F4	635/256.7	7 3/4	10X	FLOOR	RM TX	ISI 4.9722012
A4		LH2	A2F1	635	7 3/4	-	FLOOR	RM RX	ISI 4.9722012
A5		LB2	G1	635/144.0	7 3/4	10X	SEI	BS TX	ISI 4.9722012
A6		LB2	G3	635	7 3/4	-	SEI	BS RX	ISI 4.9722012
A7		LA1A	P4	635/2236.2	5 3/8	30X	FLOOR	ITM(x) TX	VP800-AR635
A8		LA1A	P1	635	5 3/8	-	FLOOR	ITM(x) RX	VP800-AR635
A9		LA1B	P4	635/2234.2	5 3/8	30X	FLOOR	ITM(y) TX	VP800-AR635
A10		LA1B	P1	635	5 3/8	-	FLOOR	ITM(y) RX	VP800-AR635
A11		LA1	P3	635/479.4	5 3/8	10X	FLOOR	ETM(x) TX	VP800-AR635
A12		LA1	P6	635	5 3/8	-	FLOOR	ETM(x) RX	VP800-AR635
A13		LA1	P3	635/479.4	5 3/8	10X	FLOOR	ETM(y) TX	VP800-AR635
A14		LA1	P6	635	5 3/8	-	FLOOR	ETM(y) RX	VP800-AR635

NO.	DEVICE#	CHAMBER	NOZZLE	COATING	LENS/VD(IN)	FUNCTION	VP-PART#
C1		LH1	A1F3	IR	TBD/65.0	MMT3 & MC INPUT COUPLER	VP800-AR1064
D1		LH1	A1F5	-	-	ILLUMINATOR	VP800/450009
C2		LH2	A1F5	IR	TBD/98.0	MC END MIRROR, MMT2	VP800-AR1064
D2		LH2	A1F3	-	-	ILLUMINATOR	VP800/450009
C3		LH3	A2F5	IR	TBD/84.0	RM (FRONT SURFACE)	VP800-AR1064
D3		LH3	A2F4	-	-	ILLUMINATOR	VP800/450009
C4	DELETED	-	-	-	-	-	-
D4	DELETED	-	-	-	-	-	-
C5		LB2	G8	IR	TBD/48.0	BS FACE (THRU AR)	VP800-AR1064
D5		LB2	G5	-	-	ILLUMINATOR	VP800/450009
C6		LB3	G8	IR	TBD/51.0	ITM(x)	VP800-AR1064
D6		LB3	G11	-	-	ILLUMINATOR	VP800/450009
C7		LB1	G2	IR	TBD/42.0	ITM(y)	VP800-AR1064
D7		LB1	G5	-	-	ILLUMINATOR	VP800/450009
C8		LB4	G5	IR	TBD/40.0	ETM(x)	VP800-AR1064
D8		LB4	G8	-	-	ILLUMINATOR	VP800/450009

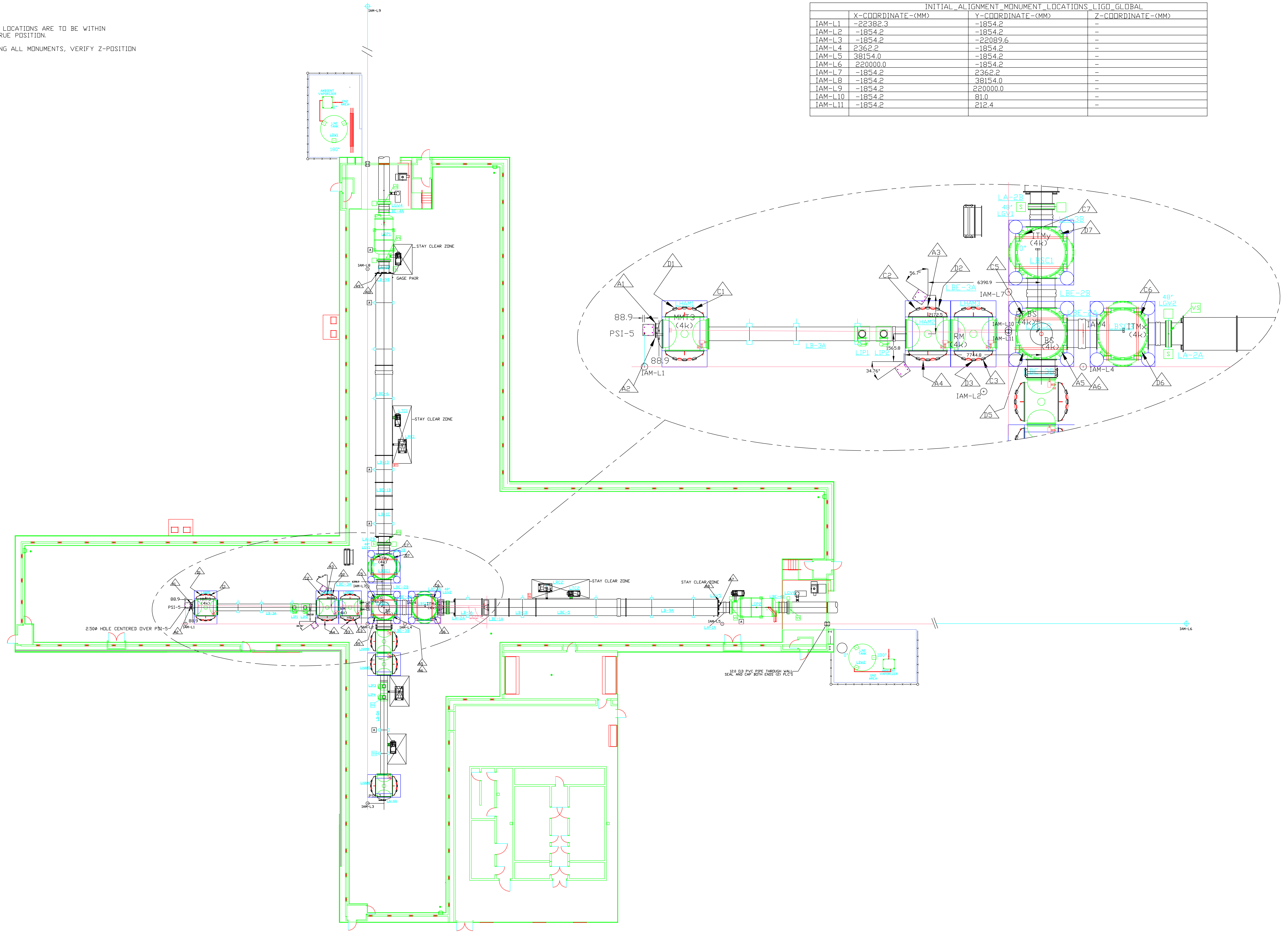
UNLESS OTHERWISE SPECIFIED DIMENSIONS ARE IN INCHES		TOLERANCES: FRACTIONAL ±1/16(.16) ANGULAR ± 1° TWO PLACE DECIMAL ±.01(.025) THREE PLACE DECIMAL ±.005(.013)		FINISHED SURFACE RMS 63 BREAK CORNERS IN: .02 REMOVE ALL BURRS		MATERIAL: _____ HEAT TREAT: _____ FINISH: _____		04 - 03 - 02 - 01 - 00 PRE-RELEASE		MASON 9/99 MASON 5/99 MASON 3/99 MASON 3/99		 CALIFORNIA INSTITUTE OF TECHNOLOGY MASSACHUSETTS INSTITUTE OF TECHNOLOGY ASC EQUIPMENT LAYOUT LOUISIANA SITE								
DWG. NO.	DESCRIPTION	USED ON: -	NEXT ASSY: -	REV	DESCRIPTION	DCC	SYS	DET	CDS	VE	CC	BT	CHECK	DRWN	DATE	CAD FILE D980499-04-S1.dwg	SCALE -	SIZE B	DWG. NO. D980499-04-D	SHEET 1 OF 5

NO.	DEVICE#	CHAMBER	NOZZLE	COATING	LENS/VD(IN)	FUNCTION	VP-PART#
C9		LB5	G3	IR	TBD/64.0	ETM(y)	VP800-AR1064
D9		LB5	G12	-	-	ILLUMINATOR	VP800/450009
C10		LA7B1	TBD	IR	TBD	BEAM FIND (TEMP ON 10" TG)	VP800-AR1064
C11		LA-7B2	TBD	IR	TBD	BEAM FIND (TEMP ON 10" TG)	VP800-AR1064
C12		LBE-5	TBD	IR	TBD	BEAM FIND (TEMP. ON 10" TG)	VP800-AR1064
C13		LBE-6	TBD	IR	TBD	BEAM FIND (TEMP. ON 10" TG)	VP800-AR1064
C14		LA-7B1	TBD	IR	TBD	BEAM FIND (TEMP. ON 10" TG)	VP800-AR1064
C15		LA-7B2	TBD	IR	TBD	BEAM FIND (TEMP. ON 10" TG)	VP800-AR1064
E1		LB4	C2G5	IR	-	ETM TRANSMISSION MONITOR	VP800-AR1064
E2		LB5	C2G3	IR	-	ETM TRANSMISSION MONITOR	VP800-AR1064

<p>UNLESS OTHERWISE SPECIFIED DIMENSIONS ARE IN INCHES</p> <p>TOLERANCES: FRACTIONAL ±1/16(.16) ANGULAR ± 1° TWO PLACE DECIMAL ±.01(.025) THREE PLACE DECIMAL ±.005(.013)</p>		<p>FINISHED SURFACE RMS 63 BREAK CORNERS IN: .02 REMOVE ALL BURRS</p>		<p>03 -</p> <p>03 -</p> <p>02 -</p> <p>01 -</p>		<p>MASON 9/99</p> <p>MASON 5/99</p> <p>MASON 3/99</p> <p>MASON 3/99</p>		<p><b>MIT</b> CALIFORNIA INSTITUTE OF TECHNOLOGY MASSACHUSETTS INSTITUTE OF TECHNOLOGY</p>	
<p>MATERIAL: - HEAT TREAT: - FINISH: -</p>		<p>00 PRE-RELEASE</p>		<p>K.MASON 2/99</p>		<p>CAD FILE: D980499-04-S2.dwg</p>		<p>SIZE: B DWG. NO. D980499-04-D</p>	
<p>USED ON: -</p>		<p>NEXT ASS'Y: -</p>		<p>REV: - DESCRIPTION: -</p>		<p>ISSUE DESCRIPTION</p>		<p>SCALE: - SHEET: 2 OF 5</p>	

- NOTES:
1. ALL MONUMENT LOCATIONS ARE TO BE WITHIN +/- 3MM OF TRUE POSITION.
  2. AFTER LOCATING ALL MONUMENTS, VERIFY Z-POSITION AND RECORD.

INITIAL ALIGNMENT MONUMENT LOCATIONS_LIGO_GLOBAL			
IAM	X-COORDINATE-(MM)	Y-COORDINATE-(MM)	Z-COORDINATE-(MM)
IAM-L1	-22382.3	-1854.2	-
IAM-L2	-1854.2	-1854.2	-
IAM-L3	-1854.2	-22089.6	-
IAM-L4	2362.2	-1854.2	-
IAM-L5	38154.0	-1854.2	-
IAM-L6	220000.0	-1854.2	-
IAM-L7	-1854.2	2362.2	-
IAM-L8	-1854.2	38154.0	-
IAM-L9	-1854.2	220000.0	-
IAM-L10	-1854.2	81.0	-
IAM-L11	-1854.2	212.4	-



UNLESS OTHERWISE SPECIFIED DIMENSIONS ARE IN MILLIMETERS			
TOLERANCES:	MATERIAL:	HEAT TREAT:	FINISH:
FRACTIONAL ±			
ANGULAR ±			
ANGULAR/MACH ± BEND ±			
TWO PLACE DECIMAL ±			
			THREE PLACE DECIMAL ±
			FINISHED SURFACE RMS
			BREAK CORNERS IN OUT
			REMOVE ALL BURRS
USED ON: XXX	NEXT ASS'Y: XXX		

REV	DESCRIPTION	DCN NUMBER	APPR'D	CHECK	DRWN	DATE
04	-					MASDN 9/99
03	-					MASDN 5/99
02	MOVED OFFSET CENTERLINE					MASDN 3/99
01	ADDED EXPANDED VIEW, CH'D OFFSET CENTERLINES					MASDN 3/99
00	PRE-RELEASE					MASDN 1/99

**LIGO** CALIFORNIA INSTITUTE OF TECHNOLOGY  
 MASSACHUSETTS INSTITUTE OF TECHNOLOGY

ASC EQUIPMENT LAYOUT  
 CORNER STATION

LOUISIANA SITE

CAD FILE: D980499-04-S3.dwg  
 SIZE: E  
 DWG NO: D980499-04-D

SCALE: 1" = 15'

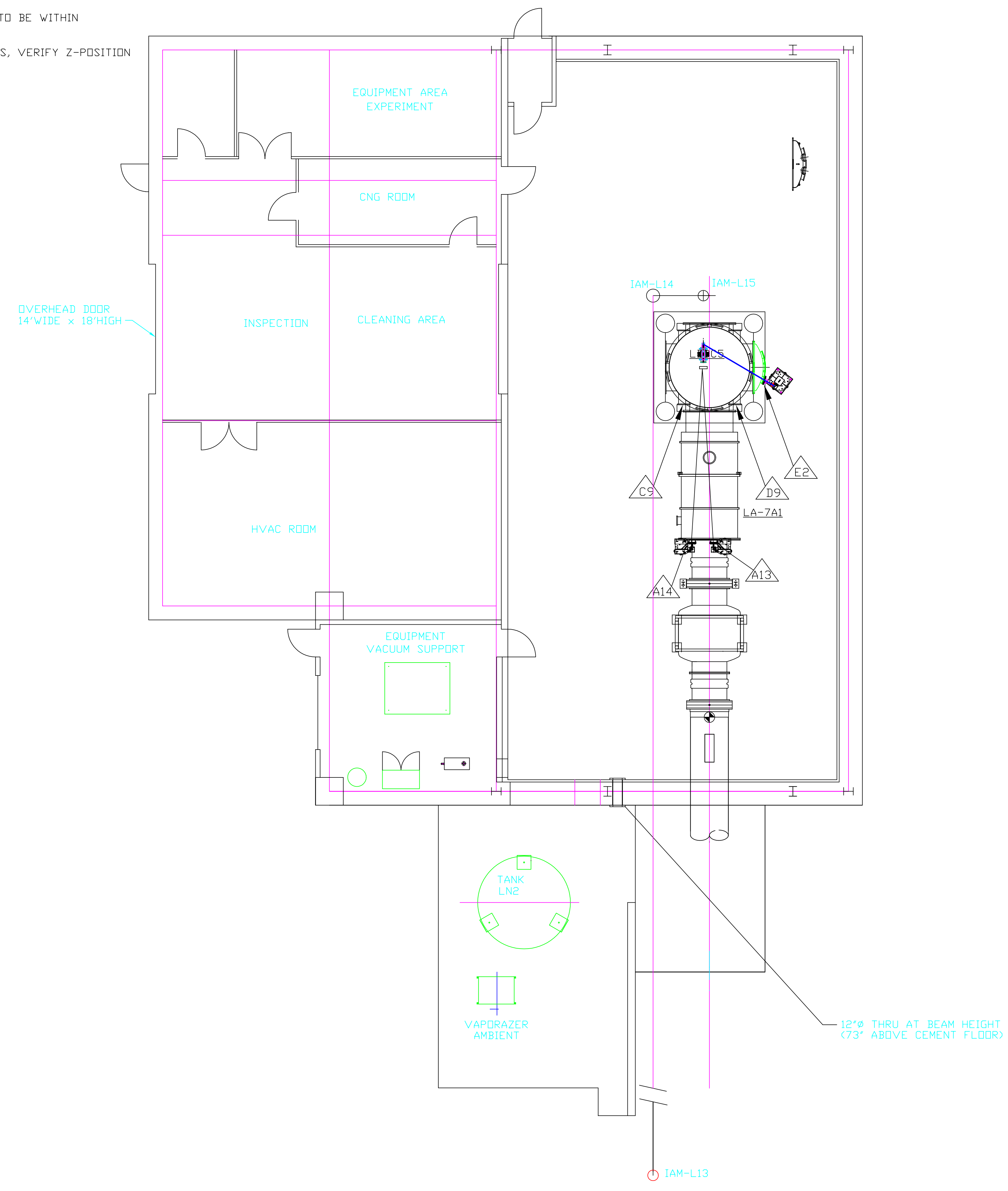
SHEET: 3 OF 5



NOTES:

1. ALL MONUMENT LOCATIONS ARE TO BE WITHIN +/- 3MM OF TRUE POSITION.
2. AFTER LOCATING ALL MONUMENTS, VERIFY Z-POSITION AND RECORD.

PSI MONUMENT LOCATIONS_LIGO_GLOBAL			
	X-COORDINATE(MM)	Y-COORDINATE(MM)	Z-COORDINATE(MM)
IAM-L13	-1854.2	3805000.0	TBD
IAM-L14	-1854.2	4002371.75	TBD
IAM-L15	-200.0	4002371.75	TBD
-	-	-	-



UNLESS OTHERWISE SPECIFIED  
DIMENSIONS ARE IN MILLIMETERS

TOLERANCES:	FRACTIONAL ± 1/8 (3 mm)	FINISHED SURFACE RMS 63
	ANGULAR ± 1°	BREAK CORNERS IN: OUT: .02
	TWO PLACE DECIMAL ± -	REMOVE ALL BURRS
	THREE PLACE DECIMAL ± -	

MATERIAL:	HEAT TREAT:	FINISH:
-	-	-

USED ON: -	NEXT ASS'Y: -
------------	---------------

REV	DESCRIPTION	DCC	SYS	DET	CDS	VE	CC	BT	CHECK	DRWN	DATE
03	-									MASON	9/99
03	-									MASON	5/99
02	MOVED OFFSET CENTERLINE									MASON	3/99
01	MIRRORED OFFSET CENTERLINE									MASON	3/99
00	PRE-RELEASE									MASON	2/99

**LIGO**

CALIFORNIA INSTITUTE OF TECHNOLOGY  
MASSACHUSETTS INSTITUTE OF TECHNOLOGY

ASC EQUIPMENT LAYOUT  
END STATION- Y ARM  
LOUISIANA SITE

CAD FILE	SIZE	DWG. NO.
D980499-04-S5.dwg	D	D980499-04-D
SCALE	1" = 8'	SHEET
		5 of 5