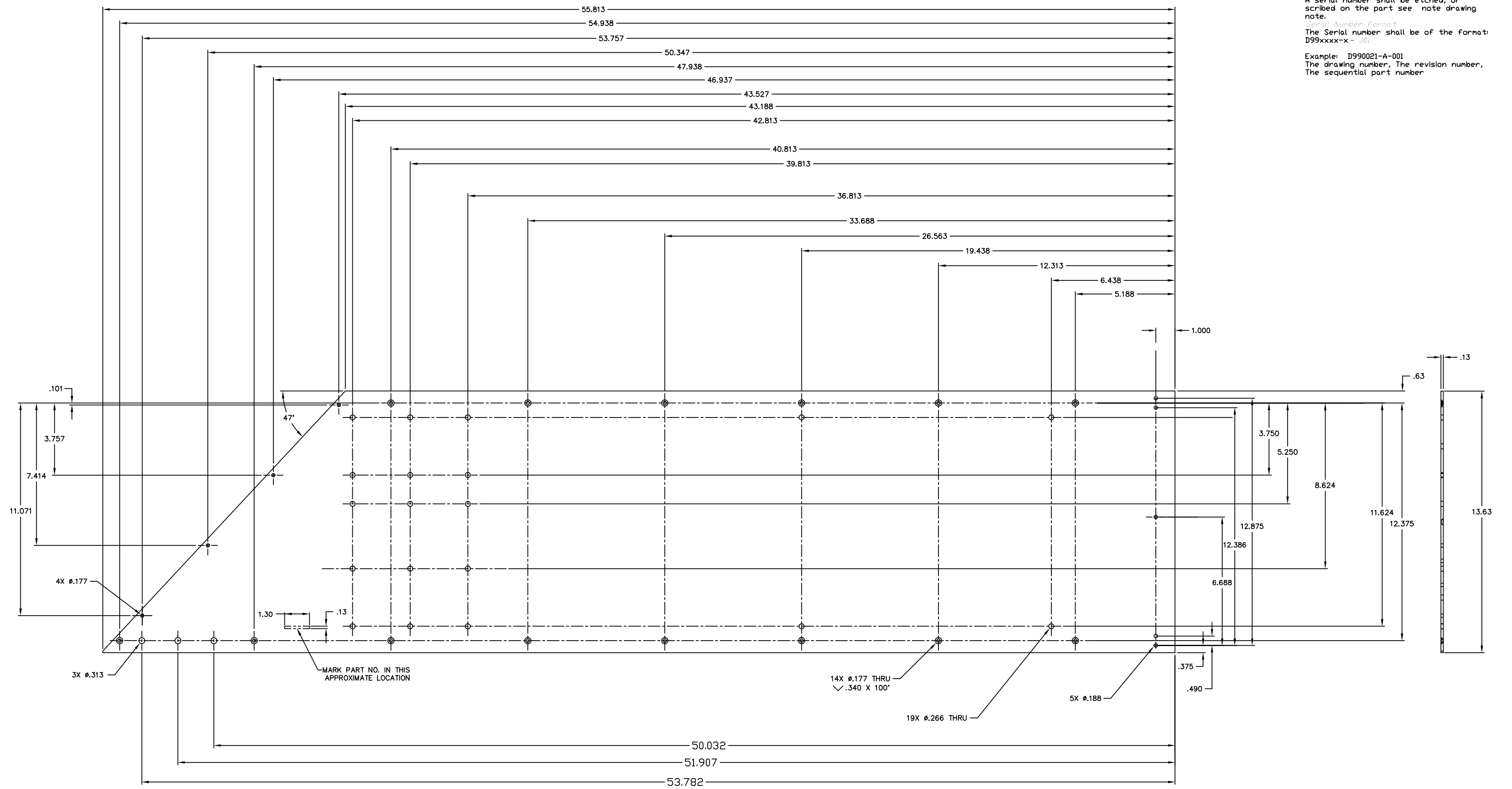


~~Liquids containing hydrocarbons or other contaminants, other than the machining fluids specified herein, shall not be allowed to come into contact with suspension material at any time. All machining fluids shall be water soluble and free of sulfur, chlorine and silicone; such as Cincinnati Milacron's Clintech 410 (stainless steel).~~

~~Identification-Serial Number:
A serial number shall be etched, or scribed on the part see note drawing note.~~

~~Serial Number Format:
The Serial number shall be of the format: D99xxxx-x - 001~~

~~Example: D990021-A-001
The drawing number, The revision number, The sequential part number~~



ref. make 1 per assembly

REF		QTY	PART or DRWG No.	DESCRIPTION				MATERIAL	
PARTS and MATERIAL LIST									
							LIGO CALIFORNIA INSTITUTE OF TECHNOLOGY MASSACHUSETTS INSTITUTE OF TECHNOLOGY		
							SHEET, LEFT, TUBE BOX		
							CAD FILE D980548-B	DWG. NO. D980548-B	
							SCALE HALF	SHEET 1 OF 1	
DWG. NO.	DESCRIPTION	USED IN: XXX	NEXT ASS'Y: XXX	REV	DESCRIPTION	DCN NUMBER	APPR'D	CHECK	
8	REFERENCE DRAWINGS	7	6	5	4	3	2	1	
		UNLESS OTHERWISE SPECIFIED DIMENSIONS ARE IN INCHES		TOLERANCES: FRACTIONAL ± 1/16 ANGULAR ± .25° ANGULAR MACH ± BEND ± TWO PLACE DECIMAL ± .01		THREE PLACE DECIMAL ± .005 FINISHED SURFACE RMS 63 BREAK CORNERS IN: .015 OUT: .015 REMOVE ALL BURRS		MATERIAL: 6061 T-6 ALUM. .125 Sheet	
		HEAT TREAT:		FINISH:		FOR FABRICATION		kenm 6-4-99	
				PRE-RELEASE		-		CHAPUT 11-3-98	
				DESCRIPTION		DCN NUMBER		DATE	
				ISSUE DESCRIPTION					