

6 5 4 3 2 1

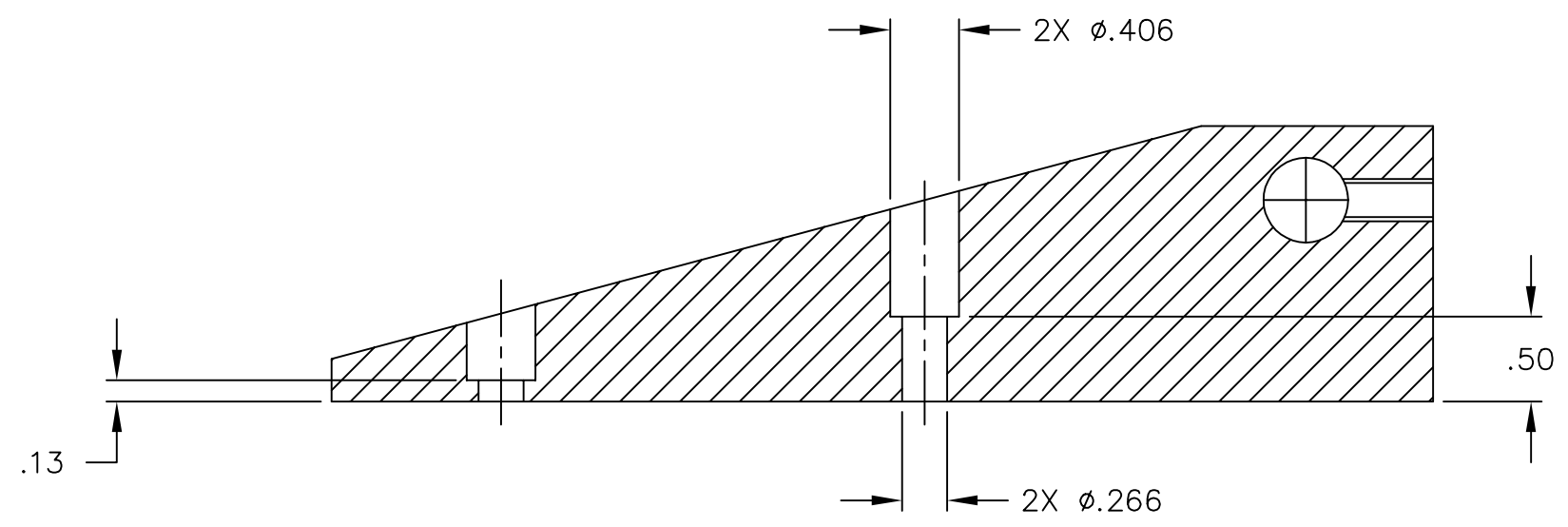
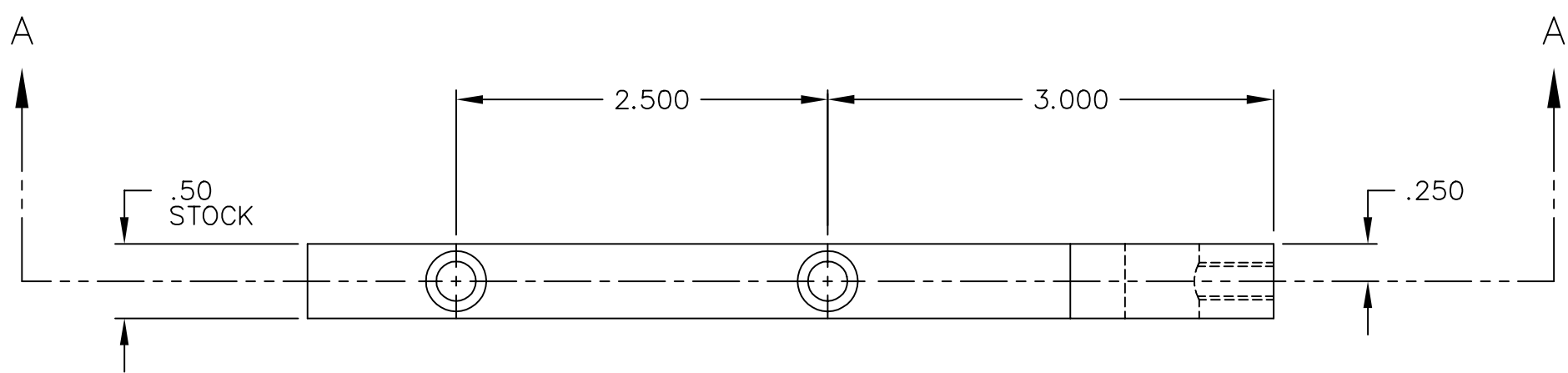
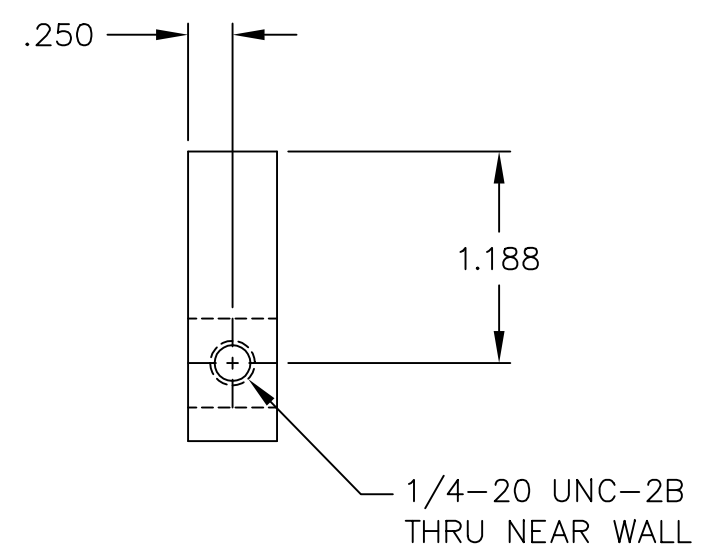
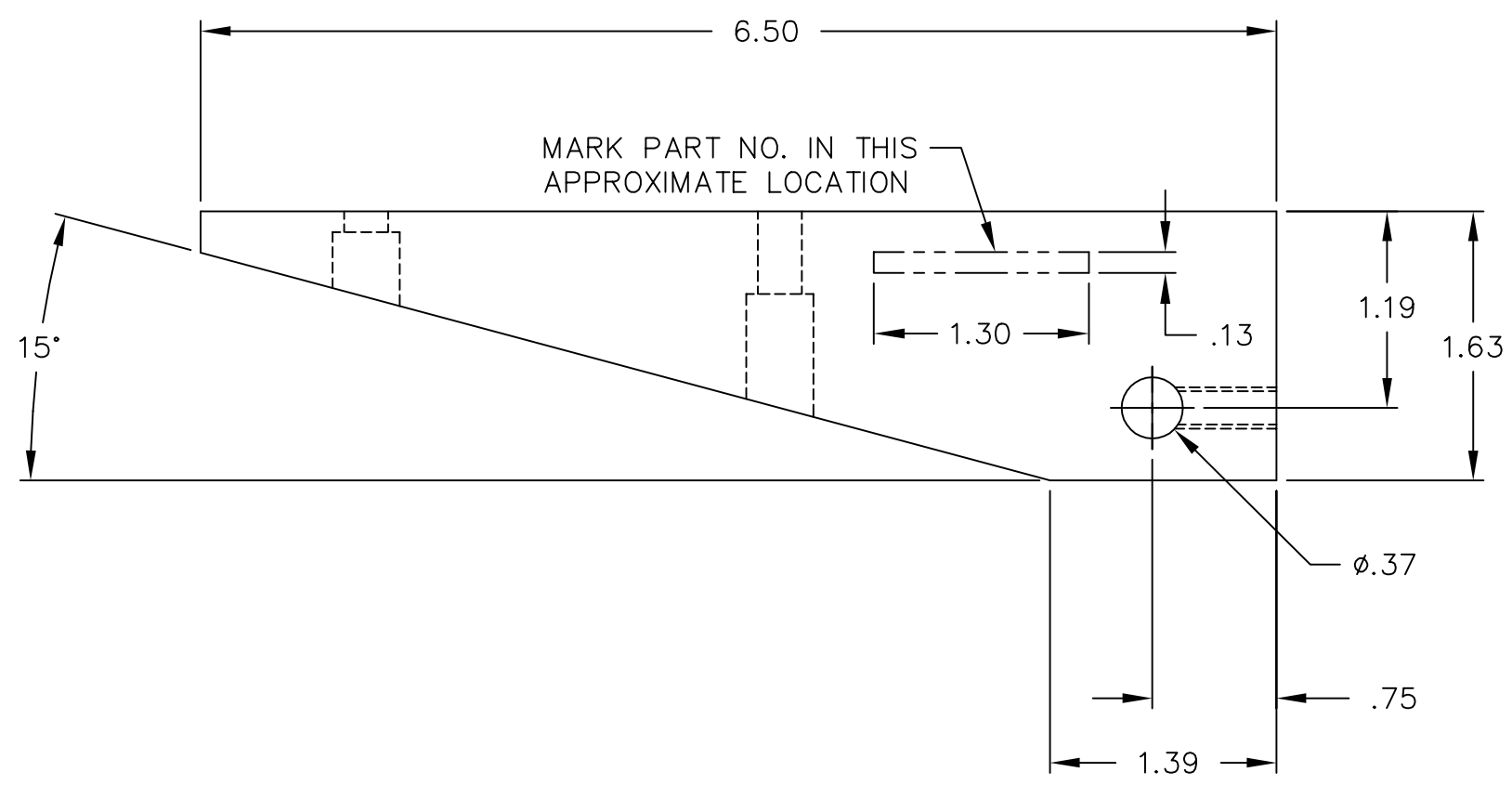
NOTES: (UNLESS OTHERWISE SPECIFIED)

~~Liquid contaminants/Machining Lubricants~~  
 Liquids containing hydrocarbons or other contaminants, other than the machining fluids specified herein, shall not be allowed to come into contact with suspension material at any time. All machining fluids shall be water soluble and free of sulfur, chlorine and silicone; such as Cincinnati Milacron's Cimtech 410 (stainless steel).

~~Identification Serial Number~~  
 A serial number shall be etched, or scribed on the part see note drawing note.

~~Serial Number Format~~  
 The Serial number shall be of the format: D99xxxx-x-001

Example: D990021-A-001  
 The drawing number, The revision number, The sequential part number



ref. make 2 per assembly

SECTION A-A

| REF   | QTY | PART or DRWG No.  | DESCRIPTION             | MATERIAL  |
|---|-----|-------------------|-------------------------|-----------|
|   |     |                   | PARTS and MATERIAL LIST |           |
| <b>LIGO</b> CALIFORNIA INSTITUTE OF TECHNOLOGY<br>MASSACHUSETTS INSTITUTE OF TECHNOLOGY |     |                   |                         |           |
| <b>GUSSET, REAR, FRONT SUPPORT</b>  |     |                   |                         |           |
| CAD FILE  |     |                   | SIZE                    | DRWG. NO. |
| D980566-B   |     |                   | C                       | D980566-B |
| SCALE   |     | ISSUE DESCRIPTION |                         | SHEET     |
| 1 : 1   |     |                   |                         | 1 OF 1    |

| UNLESS OTHERWISE SPECIFIED<br>DIMENSIONS ARE IN FEET (cm)  |                 |         |
|--|-----------------|---------|
| TOLERANCES:<br>FRACTIONAL ±1/16<br>ANGULAR ±.25°<br>ANGULAR MACH → BEND →<br>TWO PLACE DECIMAL ±.01          |                 |         |
| THREE PLACE DECIMAL ±.005<br>FINISHED SURFACE RMS 63<br>BREAK CORNERS IN: .015 OUT: .015<br>REMOVE ALL BURRS |                 |         |
| MATERIAL:  | HEAT TREAT:     | FINISH: |
| 6061 T-6 ALUM.   | /               | /       |
| DWG. NO.   | DESCRIPTION     |         |
| XXX  | XXX             |         |
| USED ON: XXX   | NEXT ASS'Y: XXX |         |

6 5 4 3 2 1