

NOTES: (UNLESS OTHERWISE SPECIFIED)

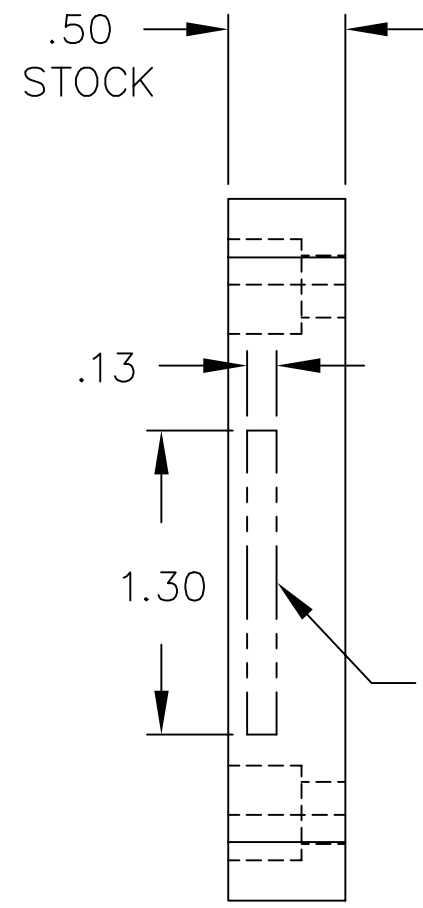
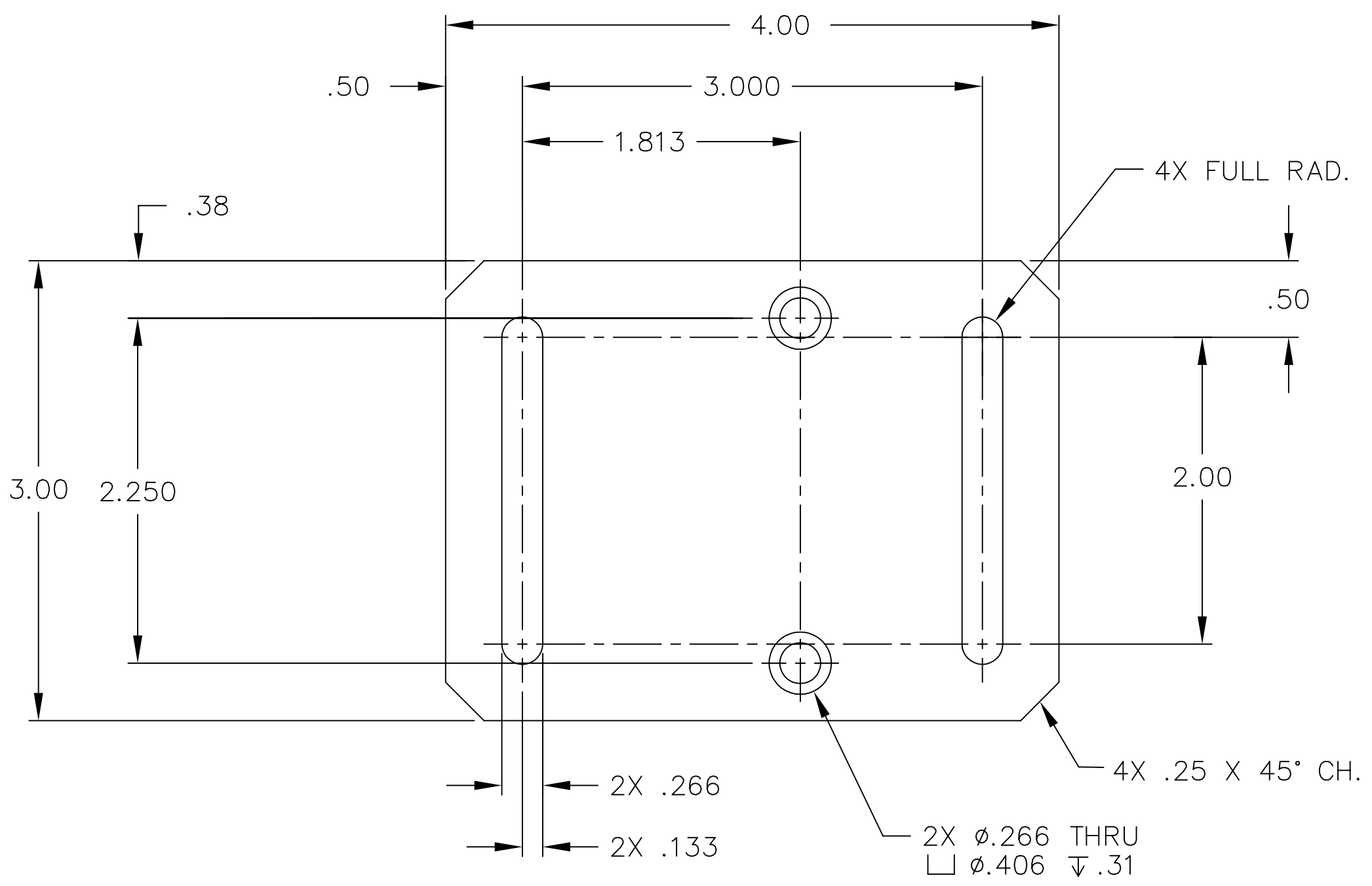
*Liquid contaminants/Machining Lubricants*  
 Liquids containing hydrocarbons or other contaminants, other than the machining fluids specified herein, shall not be allowed to come into contact with suspension material at any time. All machining fluids shall be water soluble and free of sulfur, chlorine and silicone; such as Cincinnati Milacron's Cimtech 410 (stainless steel).

*Identification\_Serial Number*  
 A serial number shall be etched, or scribed on the part see note drawing note.

*Serial Number Format*  
 The Serial number shall be of the format: D99xxxx-x-001

Example: D990021-A-001  
 The drawing number, The revision number, The sequential part number

MARK PART NO. IN THIS APPROXIMATE LOCATION



ref. make 2 per assembly

| REF.  | QTY. | PART or DRWG No. | NOMENCLATURE or DESCRIPTION | MATERIAL |
|---|------|------------------|-----------------------------|----------|
| PARTS and MATERIAL LIST   |      |                  |                             |          |
| UNLESS OTHERWISE SPECIFIED<br>DIMENSIONS ARE IN INCHES  |      |                  |                             |          |
| TOLERANCES:<br>FRACTIONAL ±1/16<br>ANGULAR ±.25°<br>ANGULAR MACH. ± BEND ±<br>TWO PLACE DECIMAL ± .01       |      |                  |                             |          |
| THREE PLACE DECIMAL ± .005<br>FINISHED SURFACE RMS 63<br>BREAK CORNERS IN .015 OUT .015<br>REMOVE ALL BURRS |      |                  |                             |          |
| MATERIAL: 6061 T-6 ALUM. HEAT TREAT: / FINISH: /  |      |                  |                             |          |
| USED ON: XXX NEXT ASS'Y: XXX  |      |                  |                             |          |
| FOR FABRICATION   |      |                  |                             |          |
| PRE-RELEASE   |      |                  |                             |          |
| DESCRIPTION DCN NUMBER APPR'D CHECK DRWN DATE   |      |                  |                             |          |
| ISSUE DESCRIPTION   |      |                  |                             |          |
| SCALE 1:1 SHEET 1 OF 1  |      |                  |                             |          |

LIGO CALIFORNIA INSTITUTE OF TECHNOLOGY  
 MASSACHUSETTS INSTITUTE OF TECHNOLOGY

PLATE, VERT. LOCK,  
 FRONT SUPPORT

CAD FILE D980571-B SIZE DWG NO. B D980571-B

|          |                    |                |            |        |
|----------|--------------------|----------------|------------|--------|
| DWG. NO. | DESCRIPTION        | MATERIAL       | HEAT TREAT | FINISH |
|          | REFERENCE DRAWINGS | 6061 T-6 ALUM. | /          | /      |