

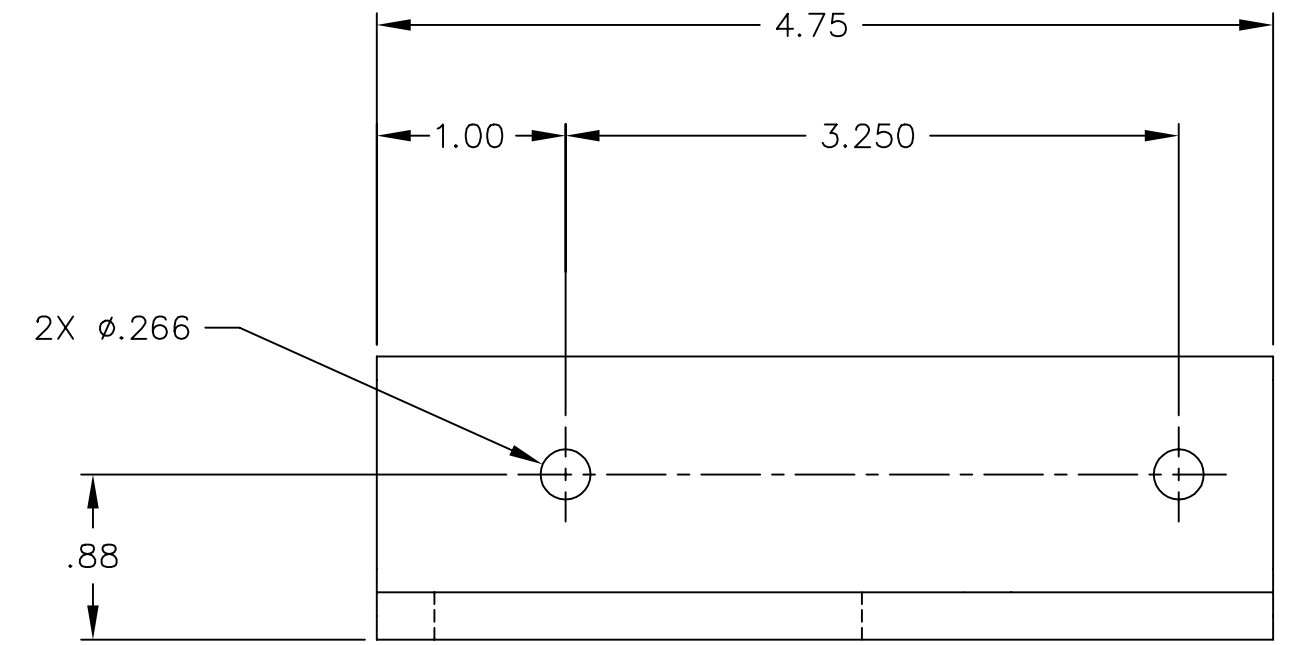
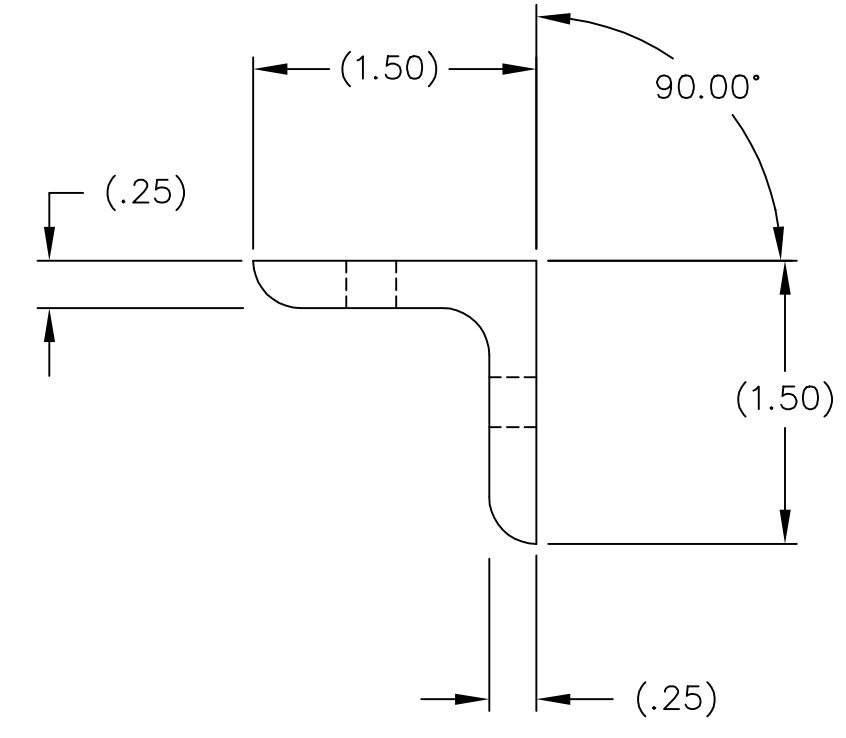
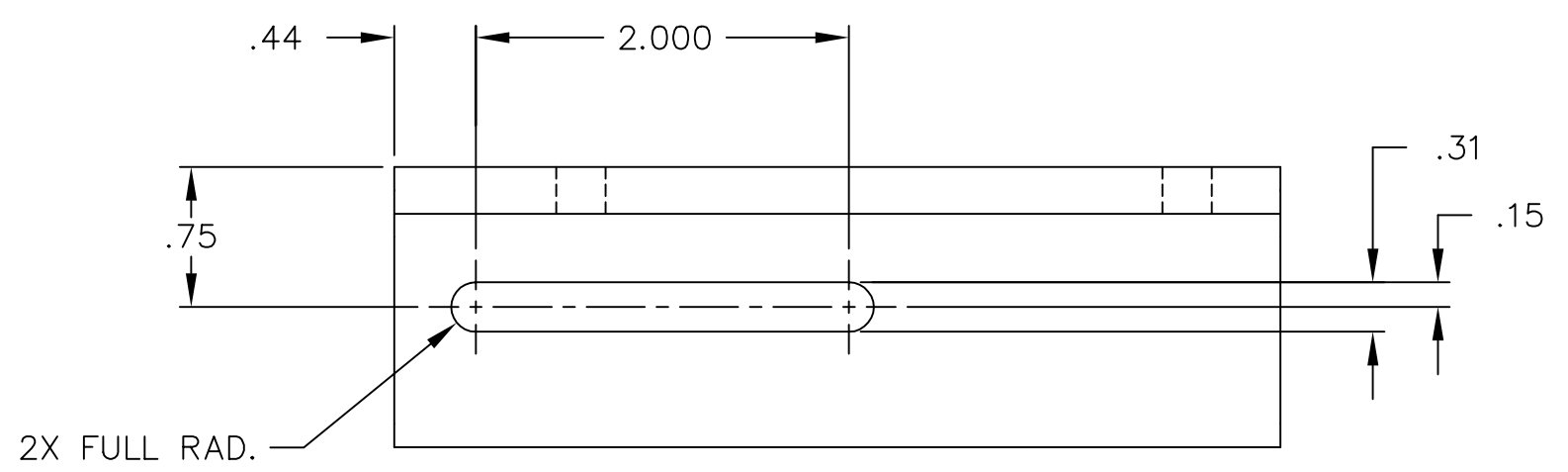
NOTES: (UNLESS OTHERWISE SPECIFIED)

Liquid contaminants/Machining Lubricants
 Liquids containing hydrocarbons or other contaminants, other than the machining fluids specified herein, shall not be allowed to come into contact with suspension material at any time. All machining fluids shall be water soluble and free of sulfur, chlorine and silicone; such as Cincinnati Milacron's Cimtech 410 (stainless steel).

Identification_Serial Number
 A serial number shall be etched, or scribed on the part see note drawing note.

Serial Number Format
 The Serial number shall be of the format: D99xxxx-x-001

Example: D990021-A-001
 The drawing number, The revision number, The sequential part number



ref. 1 per assembly

REF	QTY	PART or DRWG No.	DESCRIPTION				MATERIAL
PARTS and MATERIAL LIST							
							LIGO CALIFORNIA INSTITUTE OF TECHNOLOGY MASSACHUSETTS INSTITUTE OF TECHNOLOGY
							BRKT., REAR-LEFT, ETM RETAINING
							CAD FILE: D980632-B SIZE: C DWG. NO.: D980632-B
							SCALE: 1 : 1 SHEET: 1 OF 1

UNLESS OTHERWISE SPECIFIED DIMENSIONS ARE IN FEET (cm)			
TOLERANCES: FRACTIONAL ± 1/16 ANGULAR ± .25° ANGLE/MACH ± BEND ± TWO PLACE DECIMAL ± .01		THREE PLACE DECIMAL ± .005 FINISHED SURFACE RMS 63 BREAK CORNERS IN: .015 OUT: .015 REMOVE ALL BURRS	
MATERIAL:	HEAT TREAT:	FINISH:	
1.5 X 1.5 X .25 THK. 6061 T-6 ALUM. Angle	/	/	
USED ON: XXX	NEXT ASS'Y: XXX		

DWG. NO.	DESCRIPTION
XXX	XXX
REFERENCE DRAWINGS	

D
C
B
A

D
C
B
A

6 5 4 3 2 1