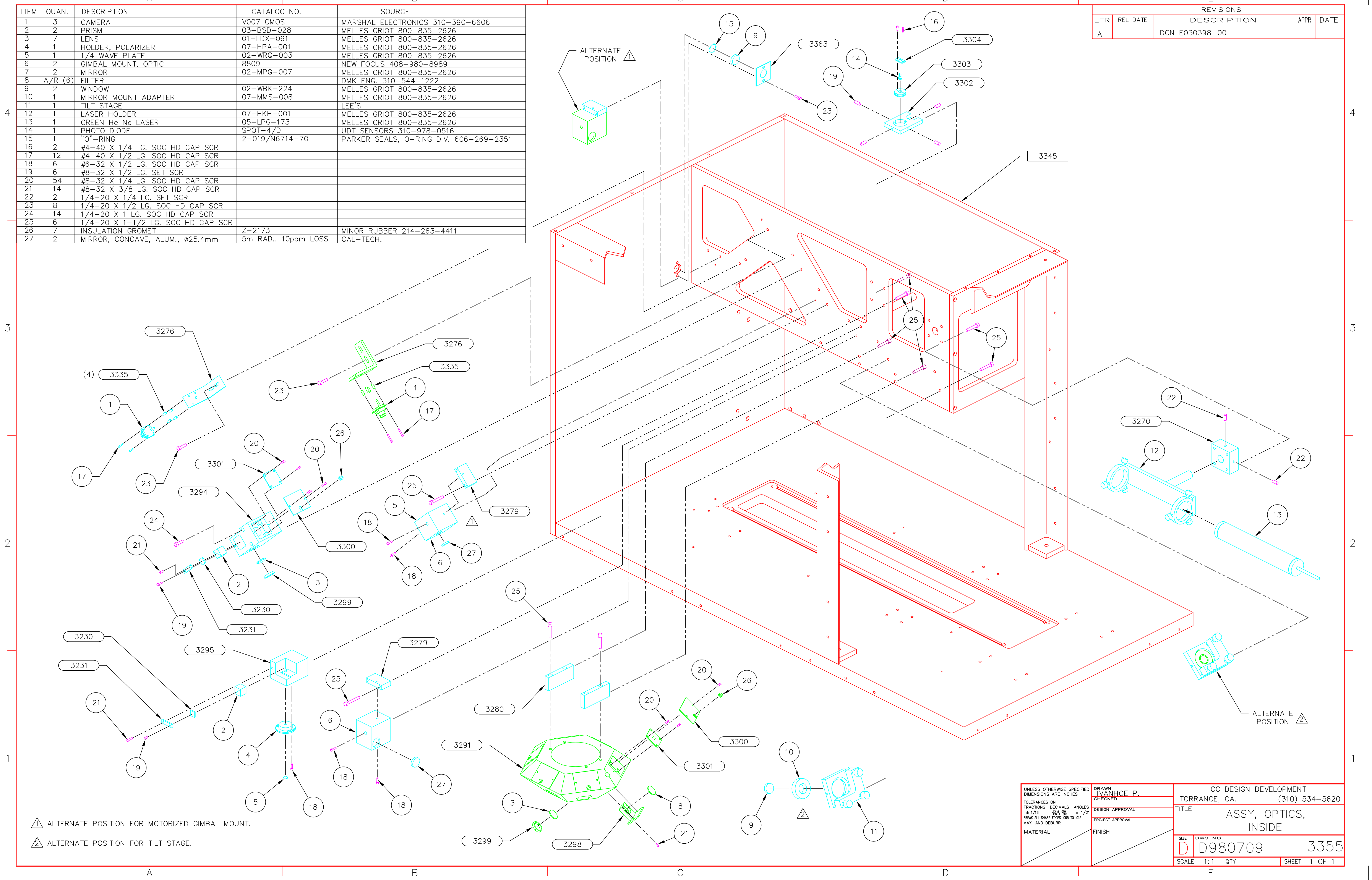


ITEM	QUAN.	DESCRIPTION	CATALOG NO.	SOURCE
1	3	CAMERA	V007 CMOS	MARSHAL ELECTRONICS 310-390-6606
2	2	PRISM	03-BSD-028	MELLES GRIOT 800-835-2626
3	7	LENS	01-LDX-061	MELLES GRIOT 800-835-2626
4	1	HOLDER, POLARIZER	07-HPA-001	MELLES GRIOT 800-835-2626
5	1	1/4 WAVE PLATE	02-WRQ-003	MELLES GRIOT 800-835-2626
6	2	GIMBAL MOUNT, OPTIC	8809	NEW FOCUS 408-980-8989
7	2	MIRROR	02-MPG-007	MELLES GRIOT 800-835-2626
8	A/R (6)	FILTER		DMK ENG. 310-544-1222
9	2	WINDOW	02-WBK-224	MELLES GRIOT 800-835-2626
10	1	MIRROR MOUNT ADAPTER	07-MMS-008	MELLES GRIOT 800-835-2626
11	1	TILT STAGE		LEE'S
12	1	LASER HOLDER	07-HKH-001	MELLES GRIOT 800-835-2626
13	1	GREEN He Ne LASER	05-LPG-173	MELLES GRIOT 800-835-2626
14	1	PHOTO DIODE	SPOT-4/D	UDT SENSORS 310-978-0516
15	1	"O"-RING	2-019/N6714-70	PARKER SEALS, O-RING DIV. 606-269-2351
16	2	#4-40 X 1/4 LG. SOC HD CAP SCR		
17	12	#4-40 X 1/2 LG. SOC HD CAP SCR		
18	6	#6-32 X 1/2 LG. SOC HD CAP SCR		
19	6	#8-32 X 1/2 LG. SET SCR		
20	54	#8-32 X 1/4 LG. SOC HD CAP SCR		
21	14	#8-32 X 3/8 LG. SOC HD CAP SCR		
22	2	1/4-20 X 1/4 LG. SET SCR		
23	8	1/4-20 X 1/2 LG. SOC HD CAP SCR		
24	14	1/4-20 X 1 LG. SOC HD CAP SCR		
25	6	1/4-20 X 1-1/2 LG. SOC HD CAP SCR		
26	7	INSULATION GROMMET	Z-2173	MINOR RUBBER 214-263-4411
27	2	MIRROR, CONCAVE, ALUM., ø25.4mm	5m RAD., 10ppm LOSS	CAL-TECH.

REVISIONS				
LTR	REL DATE	DESCRIPTION	APPR	DATE
A		DCN E030398-00		



▲ ALTERNATE POSITION FOR MOTORIZED GIMBAL MOUNT.
▲ ALTERNATE POSITION FOR TILT STAGE.

UNLESS OTHERWISE SPECIFIED DIMENSIONS ARE INCHES	DRAWN IVANHOE P.	CC DESIGN DEVELOPMENT TORRANCE, CA. (310) 534-5620
TOLERANCES ON FRACTIONS DECIMALS ANGLES ± 1/16 ± .005 ± 1/2° BREAK ALL SHARP EDGES 200 TO .015 MAX. AND DEBURR	CHECKED	TITLE ASSY, OPTICS, INSIDE
MATERIAL	DESIGN APPROVAL	PROJECT APPROVAL
FINISH		
SIZE D	DWG NO. D980709	3355
SCALE 1:1	QTY	SHEET 1 OF 1