

6 5 4 3 2 1

NOTES: (UNLESS OTHERWISE SPECIFIED)

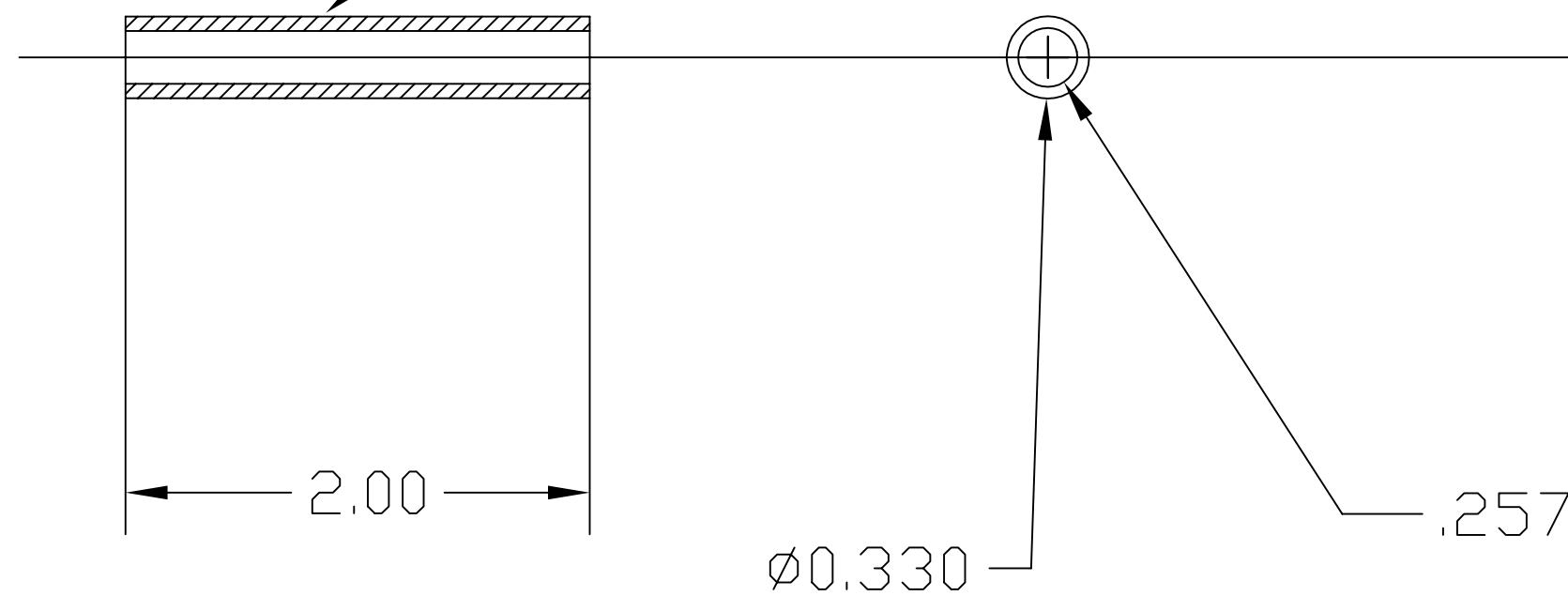
~~Liquid contaminants/Machining Lubricants~~
 Liquids containing hydrocarbons or other contaminants, other than the machining fluids specified herein, shall not be allowed to come into contact with suspension material at any time. All machining fluids shall be water soluble and free of sulfur, chlorine and silicone; such as Cincinnati Milacron's Cimtech 410 (stainless steel)

Identification_Serial Number
 A serial number shall be etched, or scribed on the part see note drawing note.

Serial Number Format
 The Serial number shall be of the format:
 D99xxxx-x-001

Example: D990021-A-001
 The drawing number, The revision number, The sequential part number

MARK PART NO. IN THIS APPROXIMATE LOCATION



Qty. Make 2 Per Assembly

4	1	-	-	-
3	2	-	-	-
2	1	-	-	-
1	1	-	-	-
REF.	QTY.	PART or DRWG No.	NOMENCLATURE or DESCRIPTION	MATERIAL

PARTS and MATERIAL LIST

UNLESS OTHERWISE SPECIFIED DIMENSIONS ARE IN INCHES								LIGO CALIFORNIA INSTITUTE OF TECHNOLOGY MASSACHUSETTS INSTITUTE OF TECHNOLOGY			
TOLERANCES: FRACTIONAL ± 1/32 THREE PLACE DECIMAL ± .005 TWO PLACE DECIMAL ± .01 ANGULAR ± 1 deg.				FINISHED SURFACE RMS 63 BREAK CORNERS and EDGES ANGULAR MACH ± BEND ± -- REMOVE ALL BURRS				TITLE PICK OFF MIRROR TENSION SCREW SLEEVE			
MATERIAL: Alum. 6061-T6				HEAT TREAT: none				FINISH: none			
USED ON: XXX				NEXT ASS'Y: XXX				FOR FABRICATION			
DWG. NO.				DESCRIPTION				REV			
REFERENCE DRAWINGS				ISSUE DESCRIPTION				SCALE FULL			

6 5 4 3 2 1