

NOTES:
 1) STEEL CONSTRUCTION SHALL CONFORM TO THE AISC SPECIFICATION FOR THE DESIGN, FABRICATION AND ERECTION OF STRUCTURAL STEEL.
 2) WELDING OF STEEL SHALL BE IN ACCORDANCE WITH AWS D11.1.
 3) FABRICATOR SHALL SAND BLAST ALL EXPOSED SURFACES TO ACCORDANCE WITH SPEC-004.
 4) STEEL SHALL BE PAINTED WITH WHITE EPOXY POLYMER ALL SURFACES SHALL BE CLEAN AND FREE OF LOOSE SCALE, OIL AND PRIME IN ACCORDANCE WITH MANUFACTURER'S INSTRUCTIONS.
 5) ALUMINUM CONSTRUCTION SHALL CONFORM TO THE ALUMINUM ASSOCIATION SPECIFICATIONS FOR ALUMINUM STRUCTURES.
 6) APPROXIMATE WEIGHT: 2500 LBS.

NOTES:
 1) ALL SIDES OF TUBE STEEL CONNECTIONS SHALL BE WELDED USING FILLET WELDS.
 2) FLARE GROOVE WELDS OR FULL PENETRATING WELDS AS REQUIRED, GRIND OFF SHARP ENDS OF DIAGONAL C-2 TO THE SAME AMOUNT AS THE MEMBER THICKNESS.

LIGO-D990290-04-V

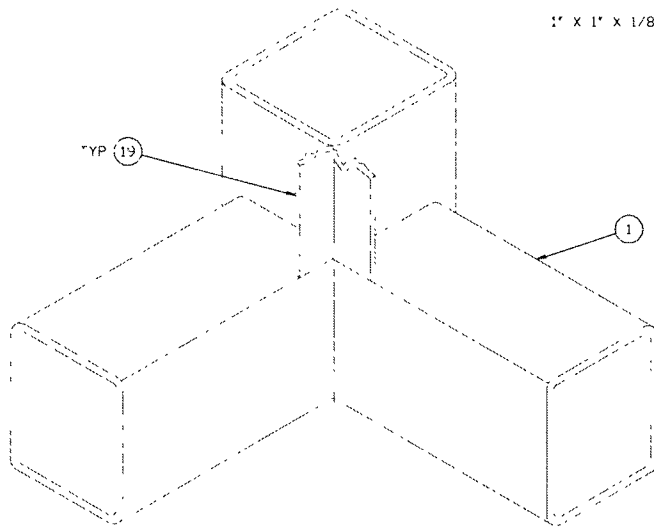
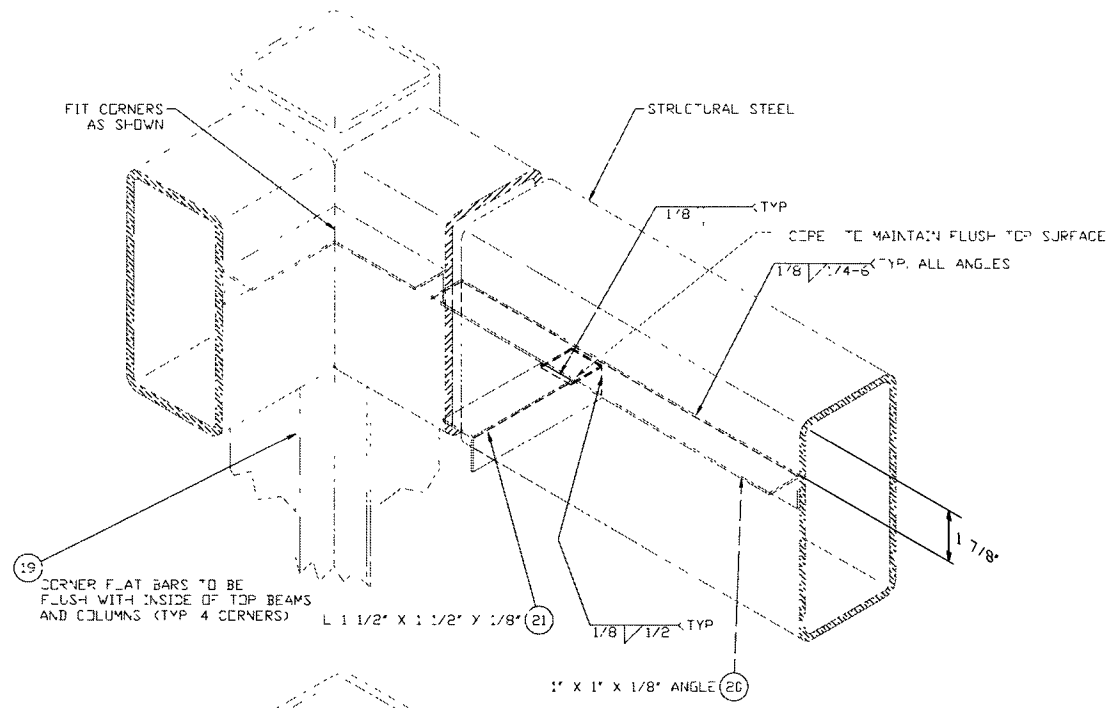
ITEM	QTY	DESCRIPTION
23	16	5/8"-11 HEX NUT
22	16	5/8" FLAT WASHER
21	60 FT	ANGLE, 1 1/2" X 1 1/2" X 1/8", A36
20	160 FT	ANGLE, 1" X 1" X 1/8", A36
19	28 FT	FLA BAR 1" W X 1/8" THK, A36
18	16	3/8"-16 X 4 1/2" LG HEX HEAD BOLT, A-307
17	16	1/2"-13 X 1/2" LG THREADED ROD
16	16	3/8" FLAT WASHER
15	16	3/8"-16 HEX WLT
14	8	5/8"-11 X 5" LG HEX HEAD BOLT, A-307
13	8	5/8"-11 X 4 1/2" LG HEX HEAD BOLT A-307
12	32	1/2" FLAT WASHER
11	32	1/2"-13 HEX NUT
10	25 FT	PLATE, 1/2" THK X 6 1/8" W, ALUMINUM, 6061-T6
9	16	LOCK WASHER, 1/2"
8	7 FT	PLATE, 1/4" THK X 3" W, A36
7	12 FT	PLATE, 1/4" THK X 2 3/4" W, A36
6	36.2 FT	TUBE, 3" X 3" X 3/16" W, ALUMINUM, 6061-T6
5	2 FT	PLATE, 1/2" THK X 2" W, A36
4	215 FT	TUBE STEEL, 2" X 2" X 3/16" WT, A500 GR B
3	23 FT	TUBE STEEL, 3" X 3" X 3/16" WT, A500 GR B
2	108 FT	TUBE STEEL, 6" X 3" X 3/16" WT, A500 GR B
1	100 FT	TUBE STEEL, 3 1/2" X 3 1/2" X 3/16" W, A500 GR B

PROPRIETARY AND CONFIDENTIAL	UNLESS OTHERWISE SPECIFIED DIMENSIONS ARE IN INCHES								
THIS DOCUMENT CONTAINS PROPRIETARY INFORMATION BELONGING TO PROCESS SYSTEMS INTERNATIONAL, INC. OR ITS AFFILIATED COMPANIES AND SHALL BE USED ONLY FOR THE PURPOSE FOR WHICH IT WAS SUPPLIED. IT SHALL NOT BE COPIED, REPRODUCED OR OTHERWISE USED FOR ANY OTHER PURPOSE WITHOUT THE WRITTEN CONSENT OF PROCESS SYSTEMS INTERNATIONAL, INC. AND SHALL BE RETURNED UPON REQUEST.	<p>4 REISSUED FOR FABRICATION AS NOTED</p> <p>3 REISSUED FOR FABRICATION AS NOTED</p> <p>2 REISSUED FOR FABRICATION AS NOTED</p> <p>1 REISSUED FOR FABRICATION AS NOTED</p> <p>0 ISSUED FOR FABRICATION</p>								
<table border="1"> <thead> <tr> <th>DWG. NO.</th> <th>DESCRIPTION</th> <th>DWG. NO.</th> <th>DESCRIPTION</th> </tr> </thead> <tbody> <tr> <td> </td> <td> </td> <td> </td> <td> </td> </tr> </tbody> </table>	DWG. NO.	DESCRIPTION	DWG. NO.	DESCRIPTION					<p>DO NOT SCALE THIS DRAWING</p> <p>USED ON: NEXT ASS'Y: V8494133</p>
DWG. NO.	DESCRIPTION	DWG. NO.	DESCRIPTION						

REV	DESCRIPTION	ISSUE DESCRIPTION
4	REISSUED FOR FABRICATION AS NOTED	REC 08/19/97 0541
3	REISSUED FOR FABRICATION AS NOTED	REC 5/20/97 0489
2	REISSUED FOR FABRICATION AS NOTED	REC 5/7/97 0482
1	REISSUED FOR FABRICATION AS NOTED	REC 4/5/97 0448
0	ISSUED FOR FABRICATION	REC 3/8/96

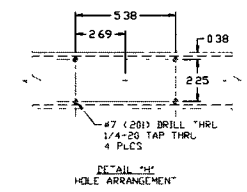
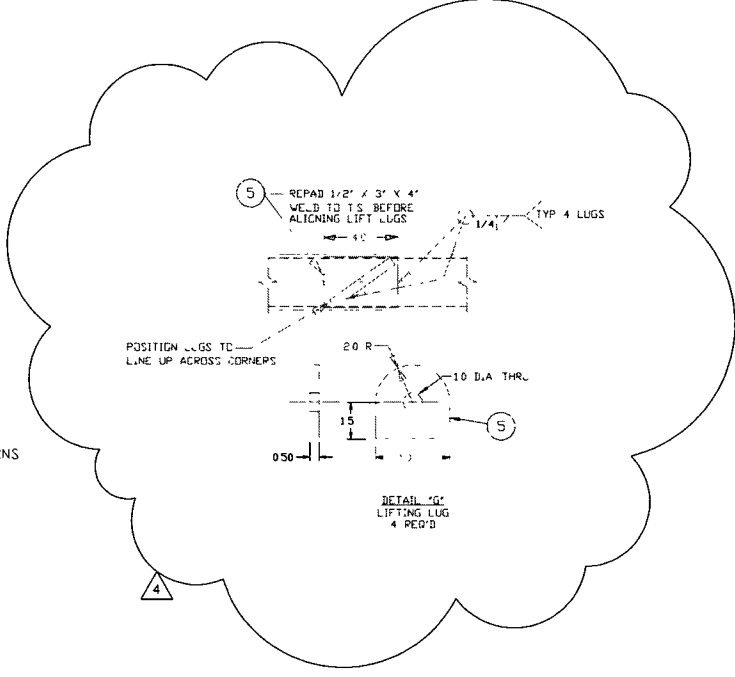
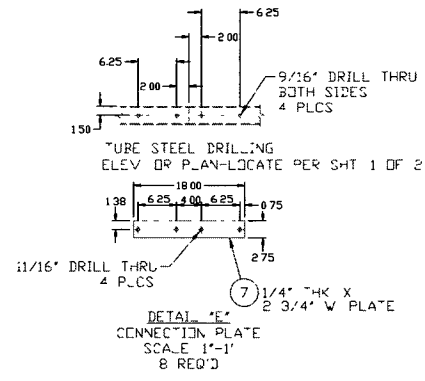
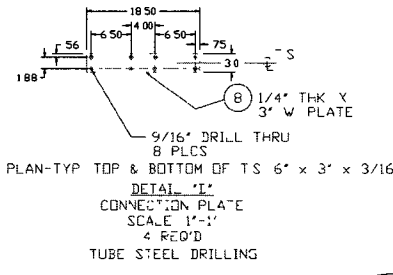
ELECTRONIC COPY

PROCESS SYSTEMS INTERNATIONAL, INC. 20 WALNUP DR. WESTBOROUGH, MASSACHUSETTS 01581 USA
BSC CLEAN ROOM WELDMENT STYLE NO. 1 & 3
LIGO VACUUM EQUIPMENT
CAD FILE: 413451
DWG NO: V049-4-134
SHEET 1 OF 2



DETAIL '1'
TYPICAL CORNER CEILING GRID SYSTEM INSTALLATION

- NOTES**
- 1) CLAMP ANGLE TO STRUCTURAL MEMBERS AS SHOWN. WELD IN PLACE AS SHOWN.
 - 2) LOCATE FLAT BAR & CUT TO LENGTH. DIMENSIONS ARE TAKEN TO CENTER OF FLAT BAR. CLAMP FLAT BAR TO ANGLE & WELD IN PLACE.



ELECTRONIC COPY

PROCESS SYSTEMS INTERNATIONAL INC. 20 WALKUP DR WESTBOROUGH, MASSACHUSETTS 01581 USA			
BSC CLEAN ROOM WELDMENT STYLE NO. 1 & 3			
LIGO VACUUM EQUIPMENT			
CAD FILE 413432	SIZE D	FIG. NO. V049-4-134	REV 4
SCALE 1"=2'	SHEET 2 OF 2		REV 4

EDUCATION VERSION - NOT FOR COMMERCIAL USE

REV 23, 1997 - 161419