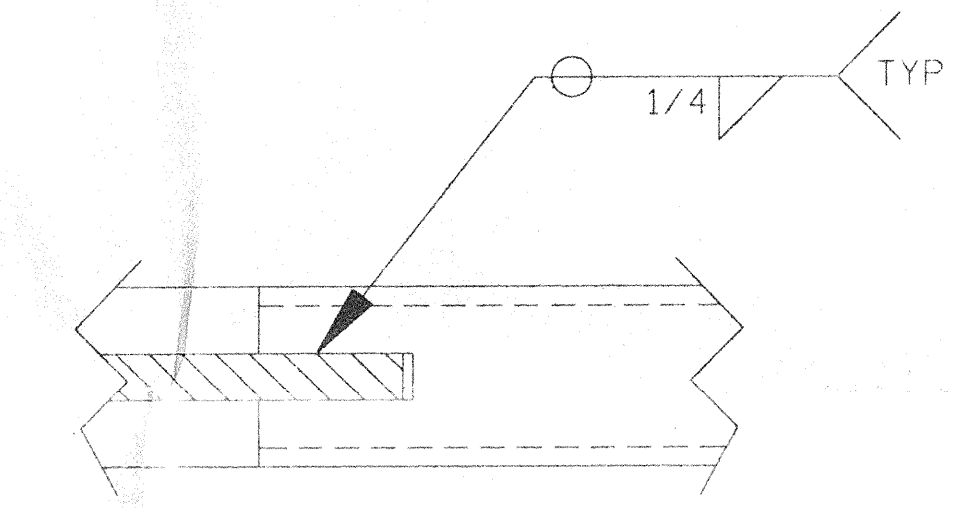
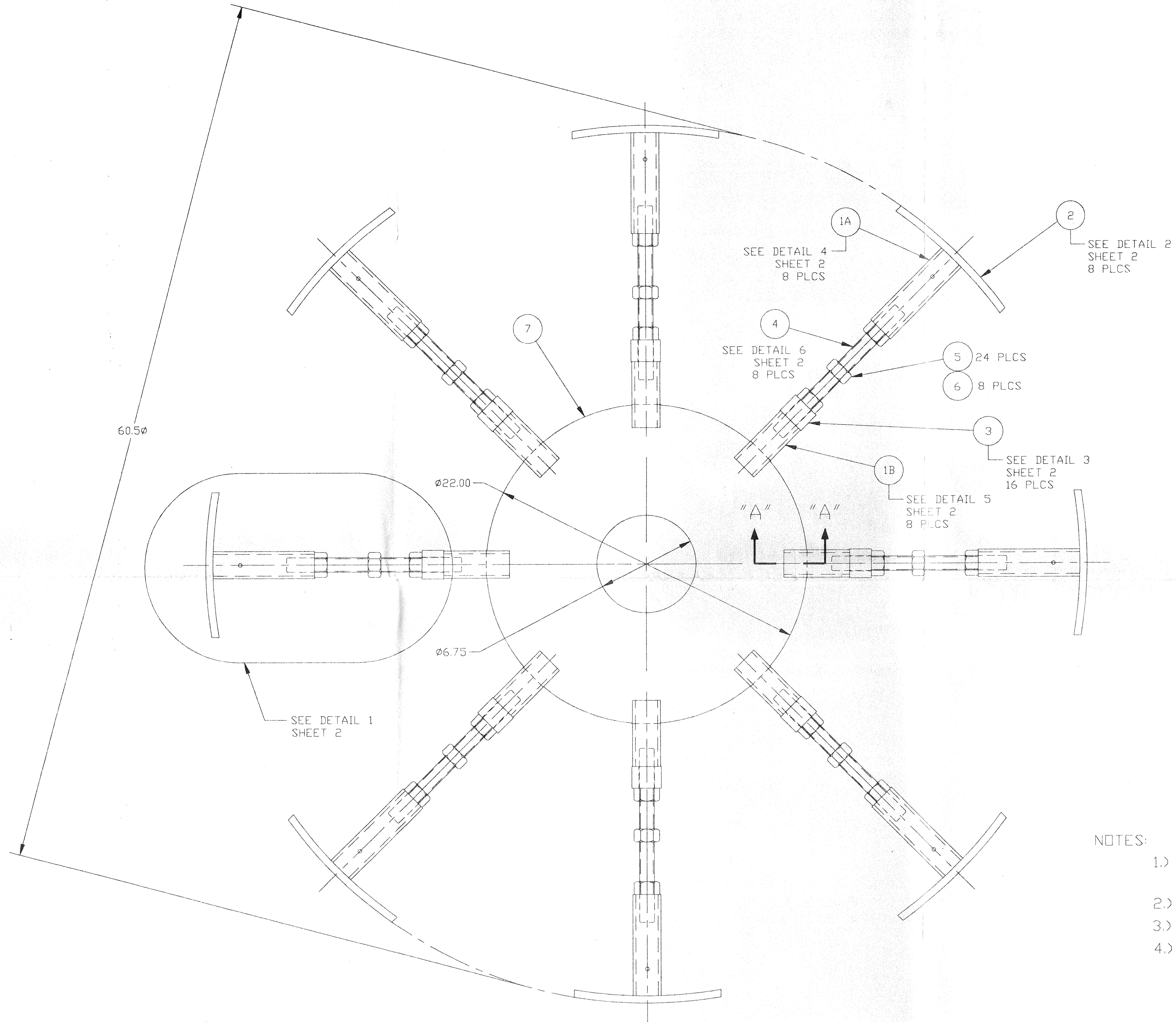


ITEM	PART NUMBER	SUFFIX	QTY	UM	DESCRIPTION
1	C011003-1D		10	FT	PIPE, SCH 80 304 A312 1-1/2"
2	C387908-06		10	FT	BAR, 1/2" x 6' 304 A479
3	C467932		1	FT	ROUND BAR 2" O.D. 304 A479
4	V049M076		8	FT	ROD, THREADED 1"-8 UNC A193 GRB8 NICKLE PLATED
5	C106308		8	EA	NUT, HEAVY HEX 1"-8 UNC A193 GRB8
6	C429608		8	EA	WASHER, FLAT 1" SST
7	BY VENDOR		1	EA	PLATE, 304 SST 22" DIA X .75 THK



- NOTES:
- 1.) CLEANING: ASSEMBLY TO BE SCRUBBED WITH NYLON BRUSH AND DETERGENT, THEN RINSED WITH STEM AND DRIED.
 - 2.) ITEM 2 TO BE CLEANED AND INSPECTED BEFORE EACH INSTALLATION IN A SHELL
 - 3.) NO LUBRICANTS ARE ALLOWED IN ANY PARTS, KEEP CLEAN OF ALL HYDROCARBOHS.
 - 4.) SPECIAL CARE IS REQUIRED TO PREVENT CONTAMINATION OF FIXTURE BY COVERING WITH TARPS AND STORING INSIDE WHEN NOT IN USE.

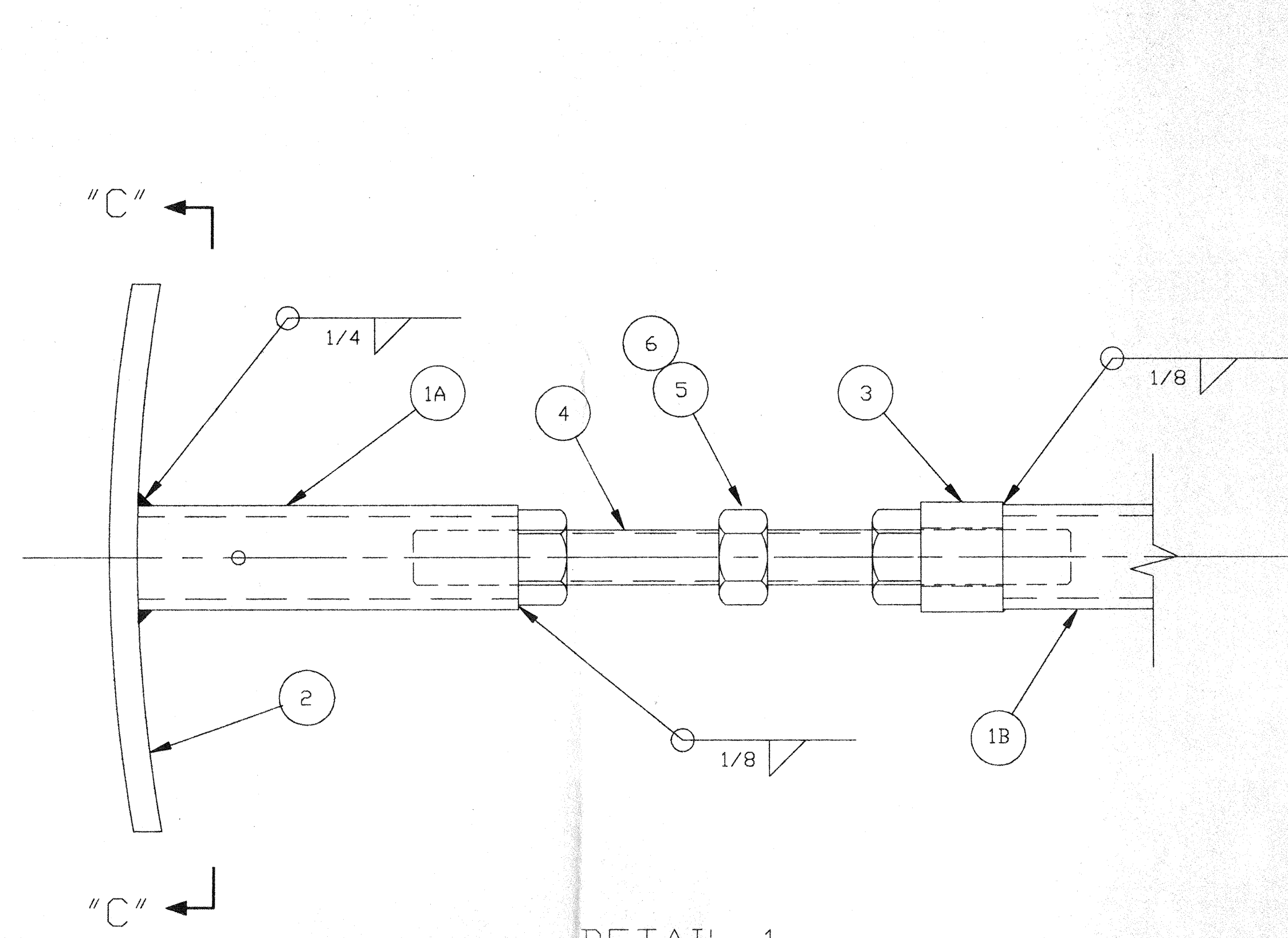
APR 30 1996

4-REQ'D

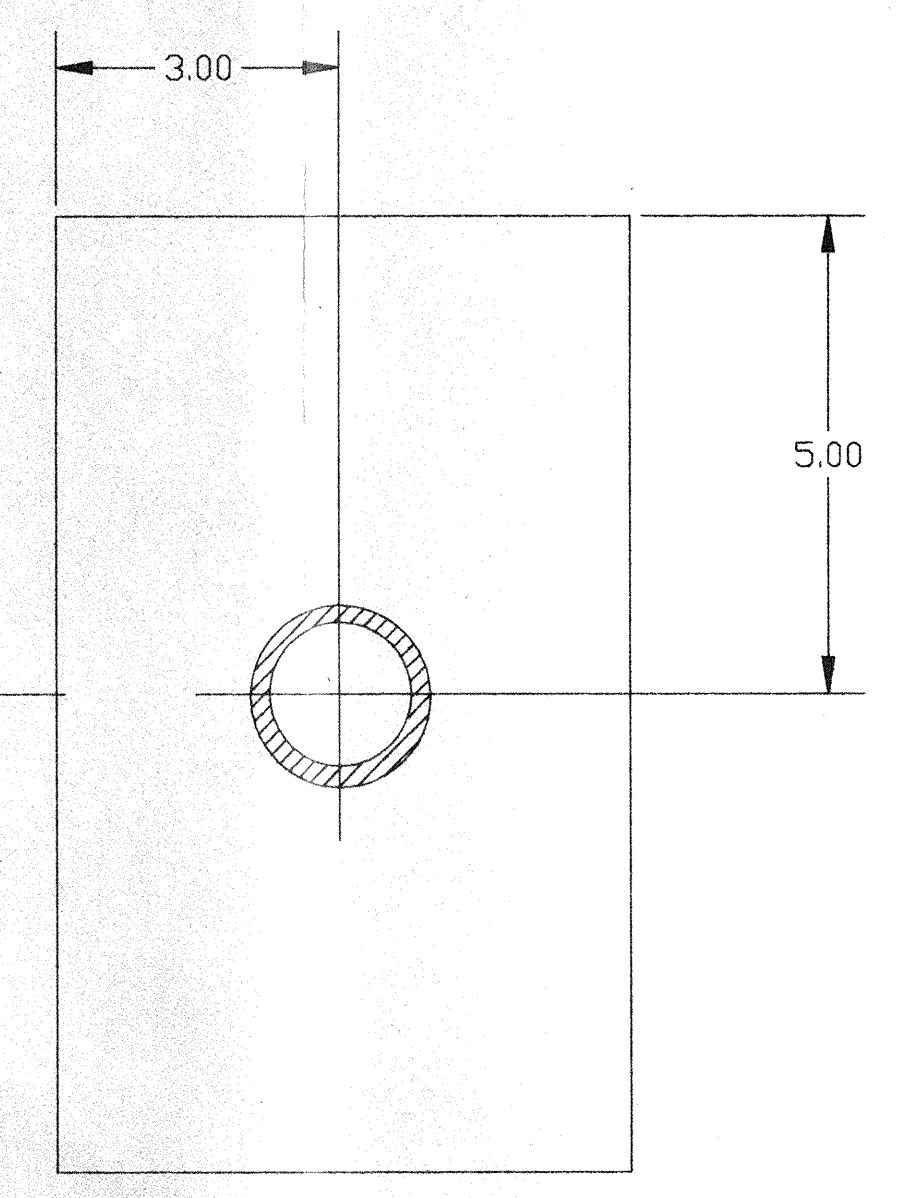
D990297-P2-V

PROPRIETARY AND CONFIDENTIAL THIS DOCUMENT CONTAINS PROPRIETARY INFORMATION BELONGING TO PROCESS SYSTEMS INTERNATIONAL, INC. OR ITS AFFILIATED COMPANIES AND SHALL BE USED ONLY FOR THE PURPOSE FOR WHICH IT WAS SUPPLIED. IT SHALL NOT BE COPIED, REPRODUCED OR OTHERWISE USED, NOR SHALL SUCH INFORMATION BE FURNISHED IN WHOLE OR IN PART TO OTHERS EXCEPT IN ACCORDANCE WITH THE TERMS OF ANY AGREEMENT UNDER WHICH IT WAS SUPPLIED OR WITH THE PRIOR WRITTEN CONSENT OF PROCESS SYSTEMS INTERNATIONAL, INC. AND SHALL BE RETURNED UPON REQUEST.				UNLESS OTHERWISE SPECIFIED DIMENSIONS ARE IN INCHES TOLERANCES: FRACTIONAL ± ANGULAR/RADIUS ±30°-30' BEND ±2° TWO PLACE DECIMAL ±.01 THREE PLACE DECIMAL ±.005 FINISHED SURFACE RMS BREAK CORNERS IN DUTY REMOVE ALL BURRS				P2 RELEASED FOR FABRICATION P1 PRELIMINARY DESIGN UPDATE				PROCESS SYSTEMS INTERNATIONAL INC. 20 WALKUP DR. WESTBOROUGH, MASSACHUSETTS 01581 USA FIXTURE 60.5 D.D. INTERNAL LIGD VACUUM EQUIPMENT			
DWG. NO. DESCRIPTION DWG. NO. DESCRIPTION				DO NOT SCALE THIS DRAWING USED ON: NEXT ASS'Y:				CAD FILE: 4049SI SIZE: D DWG. NO: V049-4-049 REV: P2 SCALE: 3" = 1' SHEET: 1 OF 2							
REFERENCE DRAWINGS				ISSUE DESCRIPTION											

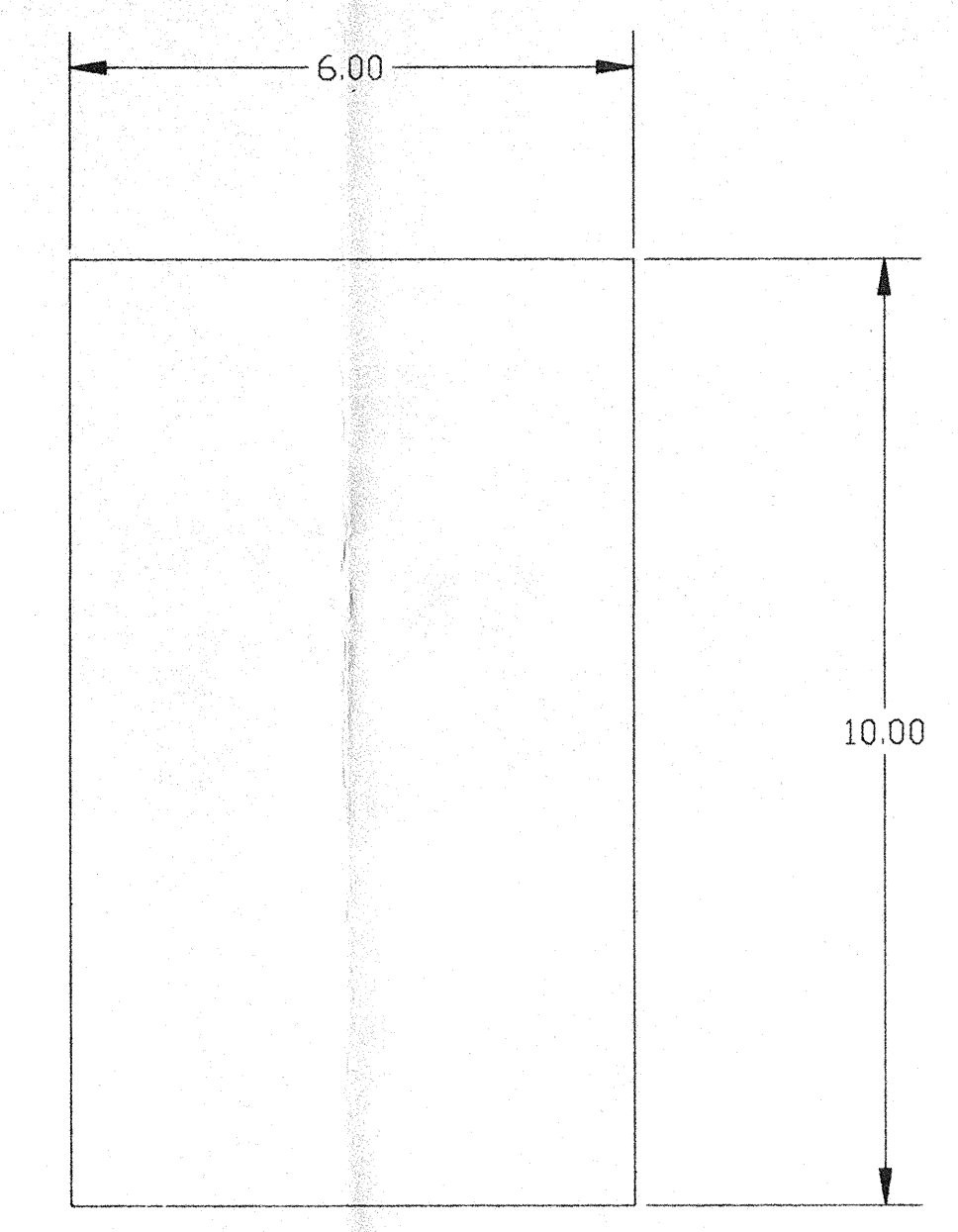
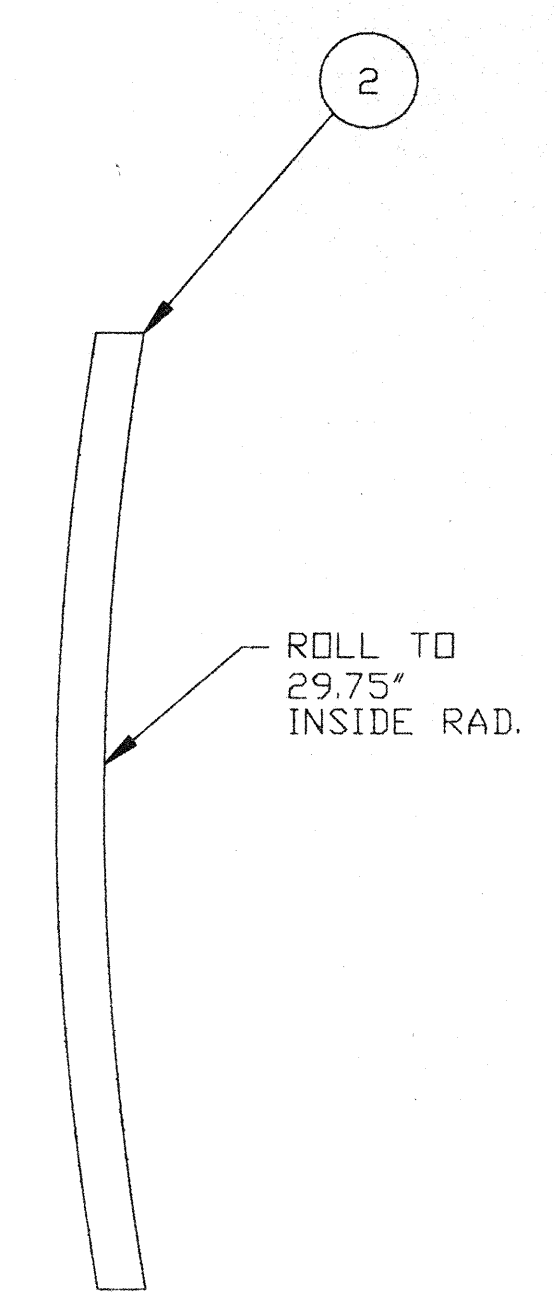
8 7 6 5 4 3 2 1



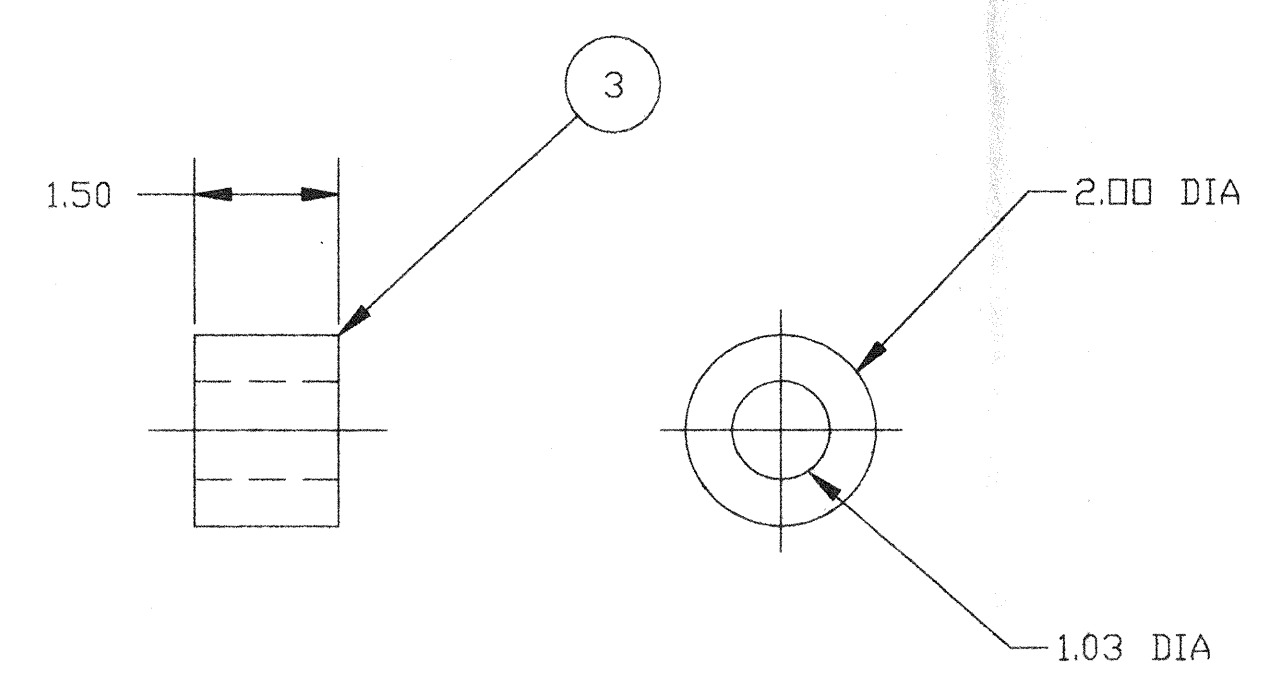
DETAIL 1
8 PLCS



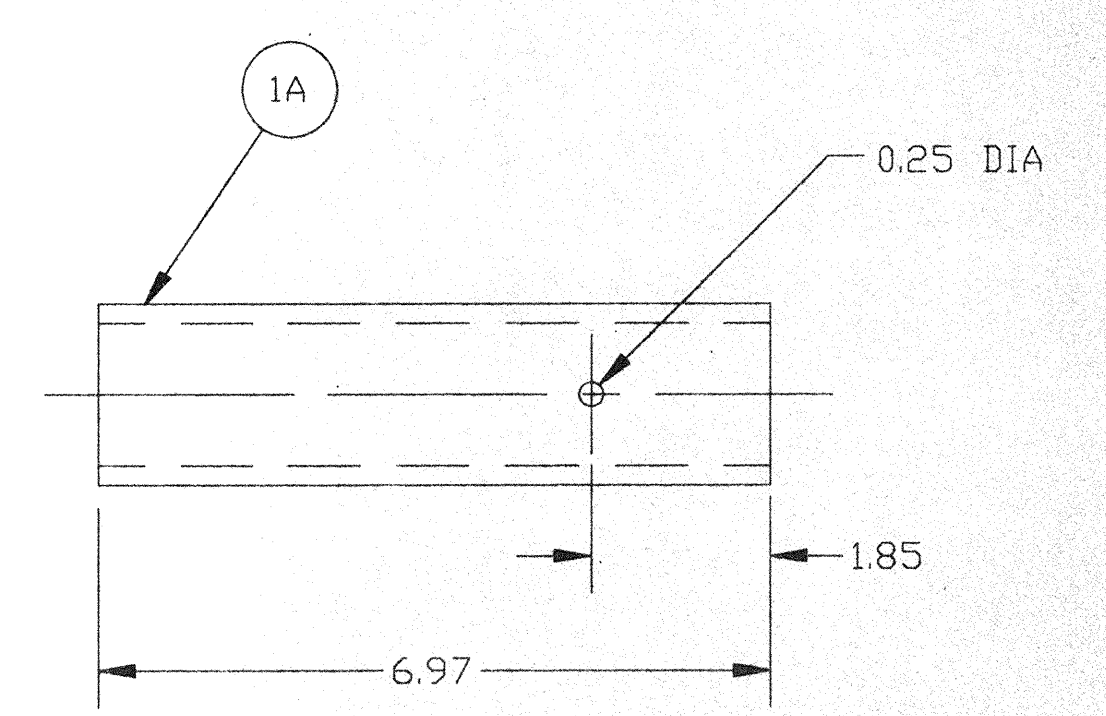
SECTION "C"-"C"



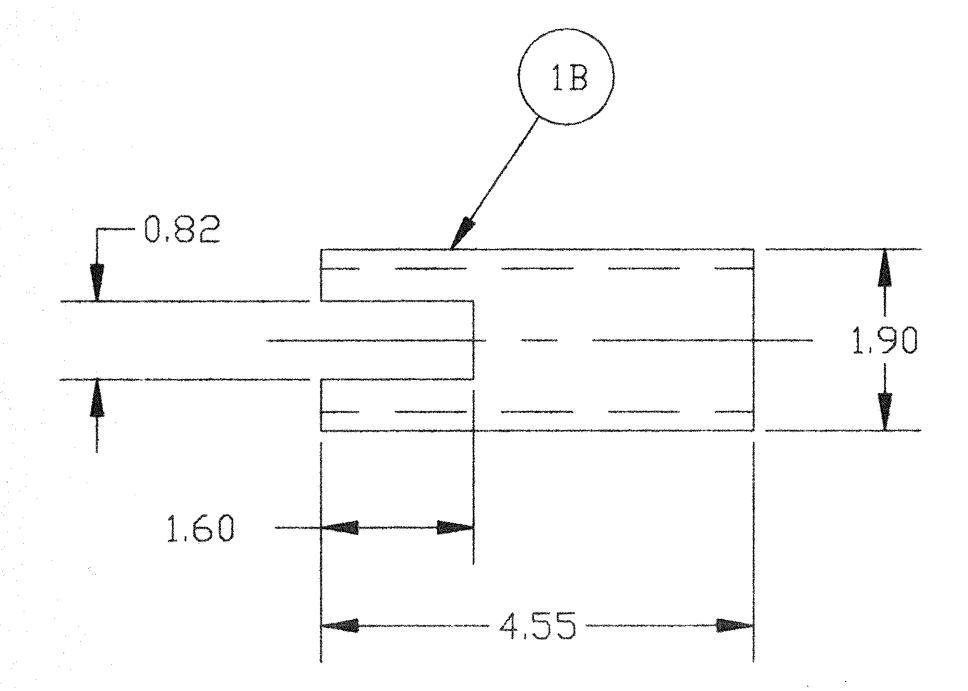
DETAIL 2
QTY: 8



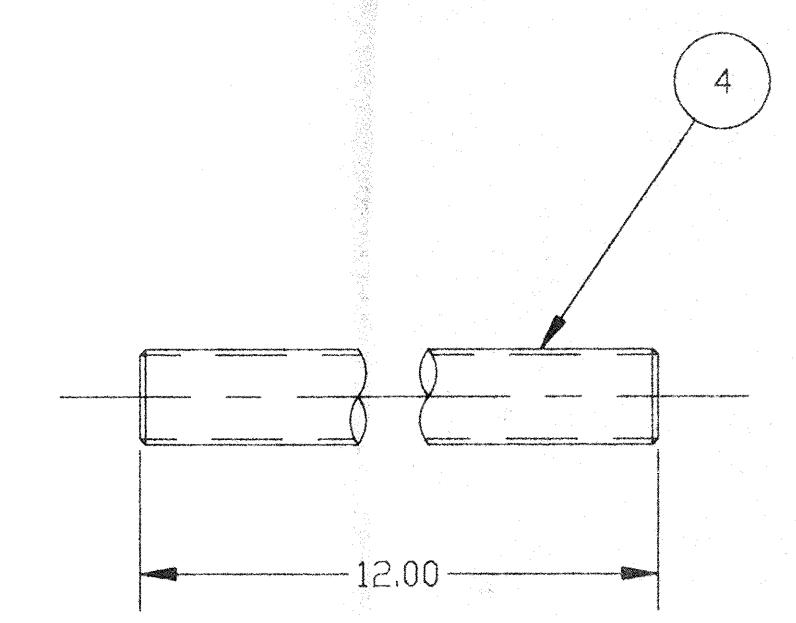
DETAIL 3
QTY: 8
SCALE: HALF



DETAIL 4
QTY: 8



DETAIL 5
QTY: 8



DETAIL 6
QTY: 8

APR 30 1996

0990297-P2-V SEE SHEET 1 FOR REVISIONS

PROCESS SYSTEMS INTERNATIONAL INC. 20 WALKUP DR. WESTBOROUGH, MASSACHUSETTS 01581 USA			
FIXTURE 60.5" D.D. INTERNAL LIQD VACUUM EQUIPMENT			
CAD FILE 4049S2	SIZE D	DWG NO. V049-4-049	REV. P2
SCALE HALF	SHEET 2 OF 2		

8 7 6 5 4 3 2 1

MAY 18 1996 - 084534