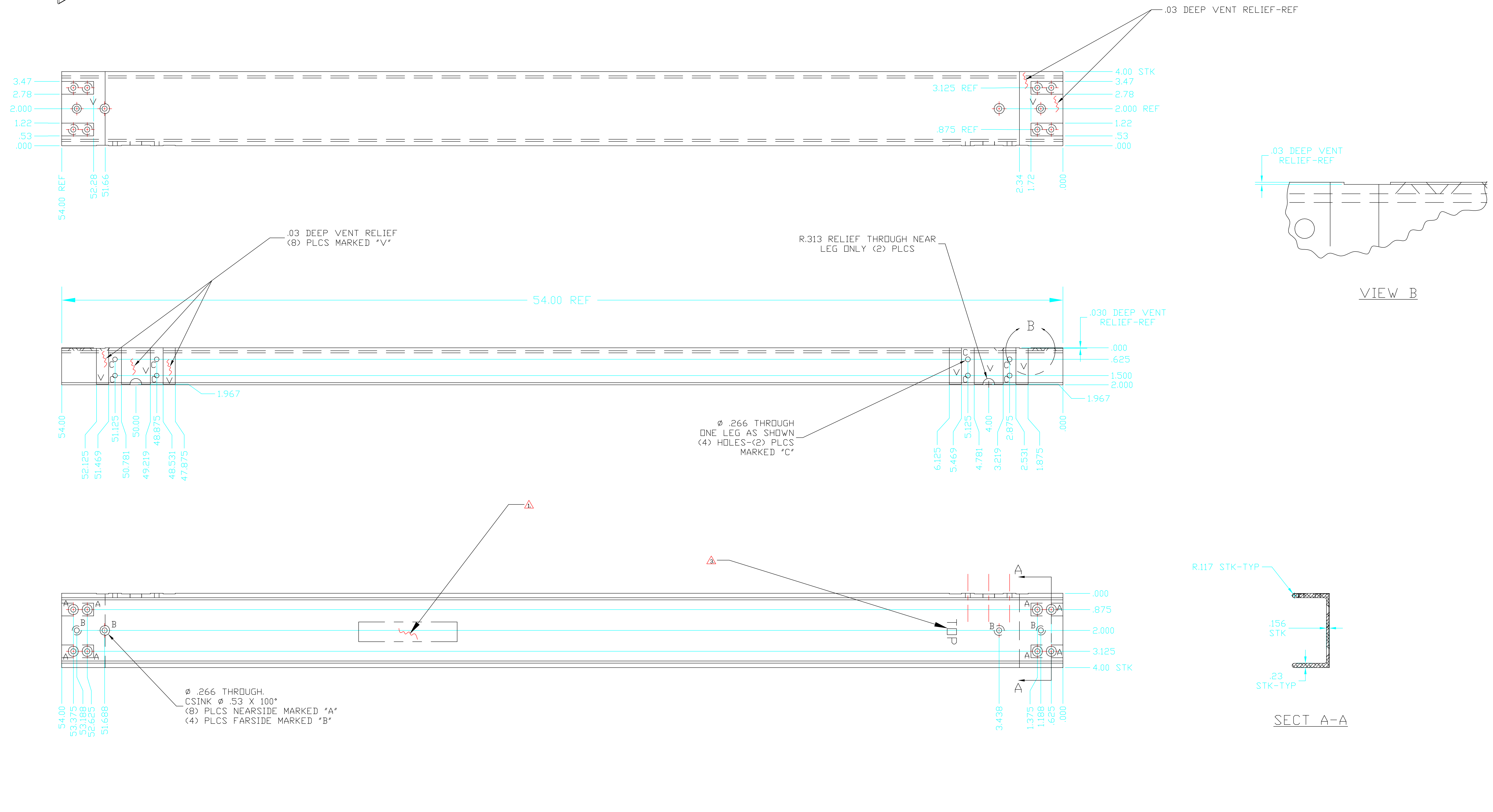
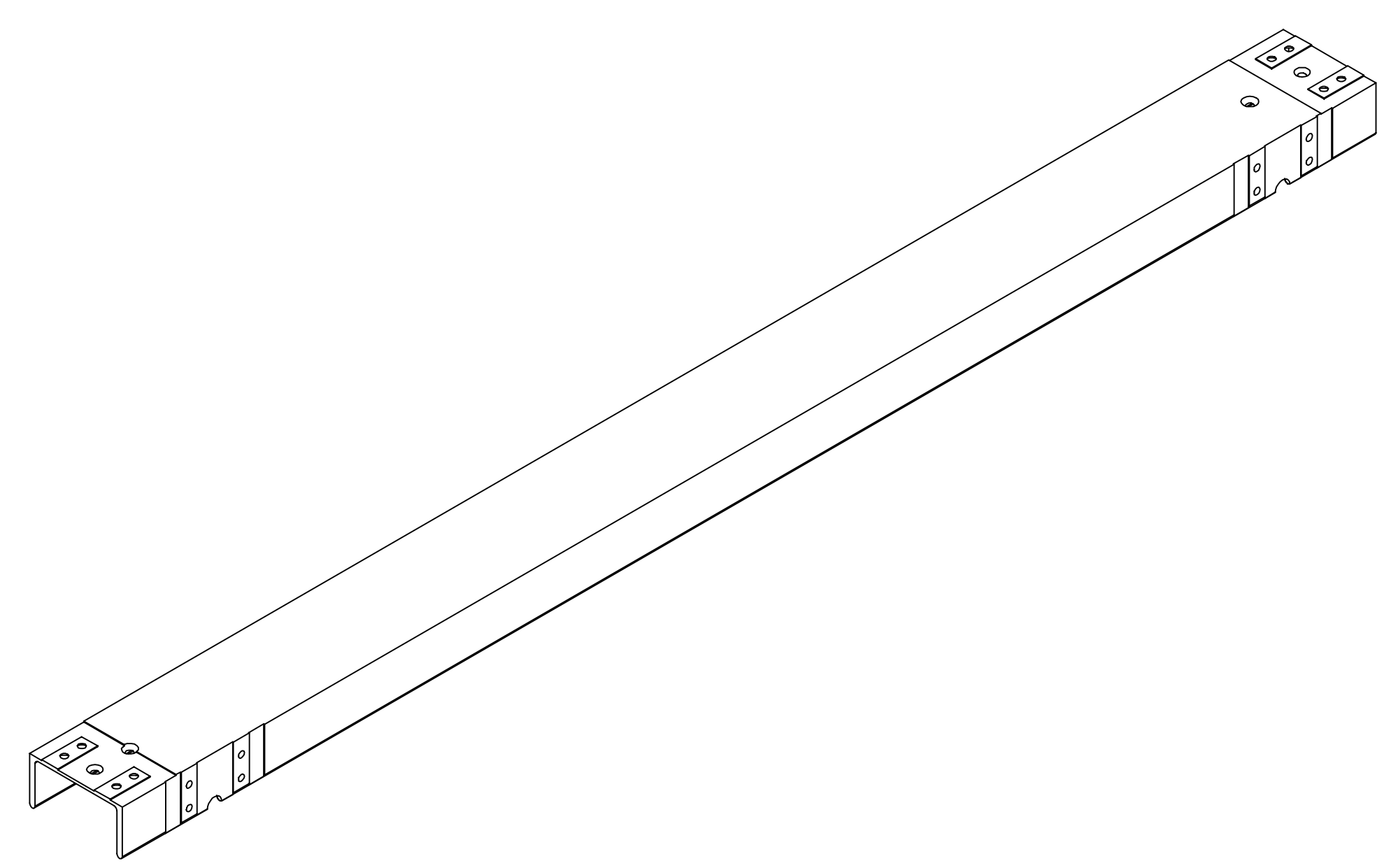


NOTES: (UNLESS OTHERWISE SPECIFIED)

- STEEL STAMP OR ENGRAVE THE DRAWING PART NUMBER ON NOTED FACE OF PART FOLLOWED BY /S/N/, THEN A THREE-DIGIT SERIAL NUMBER. SERIAL NUMBERS TO START AT 001 FOR FIRST PART AND PROCEED IN A CONSECUTIVE MANNER TO A MAXIMUM OF 999, FOR EACH SUCCEEDING PART PRODUCED. USE 013 HIGH CHARACTERS. EXAMPLE: D99038-A S/N 001
- THIS IS A UHV APPLICATION AND ALL STOCK METAL SURFACES ARE TO BE CLEANED. NO MILL IDENT. MARKS OR FORMING DISCOLORATION IS PERMISSIBLE ON FINISHED PART. SCOTCH-BRITE, JITTERBUG, SKIN CUT, TUMBLING, OR CAUSTIC ETCH AND "DI" RINSE ARE ACCEPTABLE METHODS OF CLEANING. IN ADDITION, ELECTROPOLISH IS ACCEPTABLE FOR STAINLESS STEEL.
- STEEL STAMP OR ENGRAVE THIS: "TDP" APPROXIMATELY WHERE SHOWN. USE .25 TO .38 HIGH CHARACTERS.



UNLESS OTHERWISE SPECIFIED
DIMENSIONS ARE IN INCHES

TOLERANCES:
FRACTIONAL ± 1/64
ANGULAR ± 1/2°
TWO PLACE DECIMAL ± .01
THREE PLACE DECIMAL ± .003

INSIDE RADII .06
FINISHED SURFACE RMS
BREAK CORNERS .005 TO .015
REMOVE ALL BURRS

MATERIAL: TYPE 6061-T6 ALUMINUM CHANNEL ALUM ASSOC SIZE: 4x2x15x.23
HEAT TREAT:
FINISH:

NEXT ASS'Y: D990380, 0491, 0492

| | | | | | | | | | |
|---|-------------|------------|--------|-------|------|-------|----------|--|--|
| LIGO CALIFORNIA INSTITUTE OF TECHNOLOGY MASSACHUSETTS INSTITUTE OF TECHNOLOGY | | | | | | | | | |
| ARM CAVITY BAFFLE, OUTER SUPPORT, NEAR VERTICAL, ITM/ETM LEG | | | | | | | | | |
| CAD FILE | SIZE | DWG NO. | | | | | | | |
| leg5.dwg | E | D990382-B | | | | | | | |
| SCALE | NTS | SHEET | 1 OF 1 | | | | | | |
| REV | DESCRIPTION | DCN NUMBER | APPR'D | CHECK | DRWN | DATE | | | |
| B | RELEASE | E990305 | - | - | - | KABDT | 10-21-99 | | |
| A | PRE-RELEASE | - | - | - | - | KABDT | 10-7-99 | | |

8 7 6 5 4 3 2 1

F

E

D

C

B

A