

6 5 4 3 2 1

NOTES: (UNLESS OTHERWISE SPECIFIED)

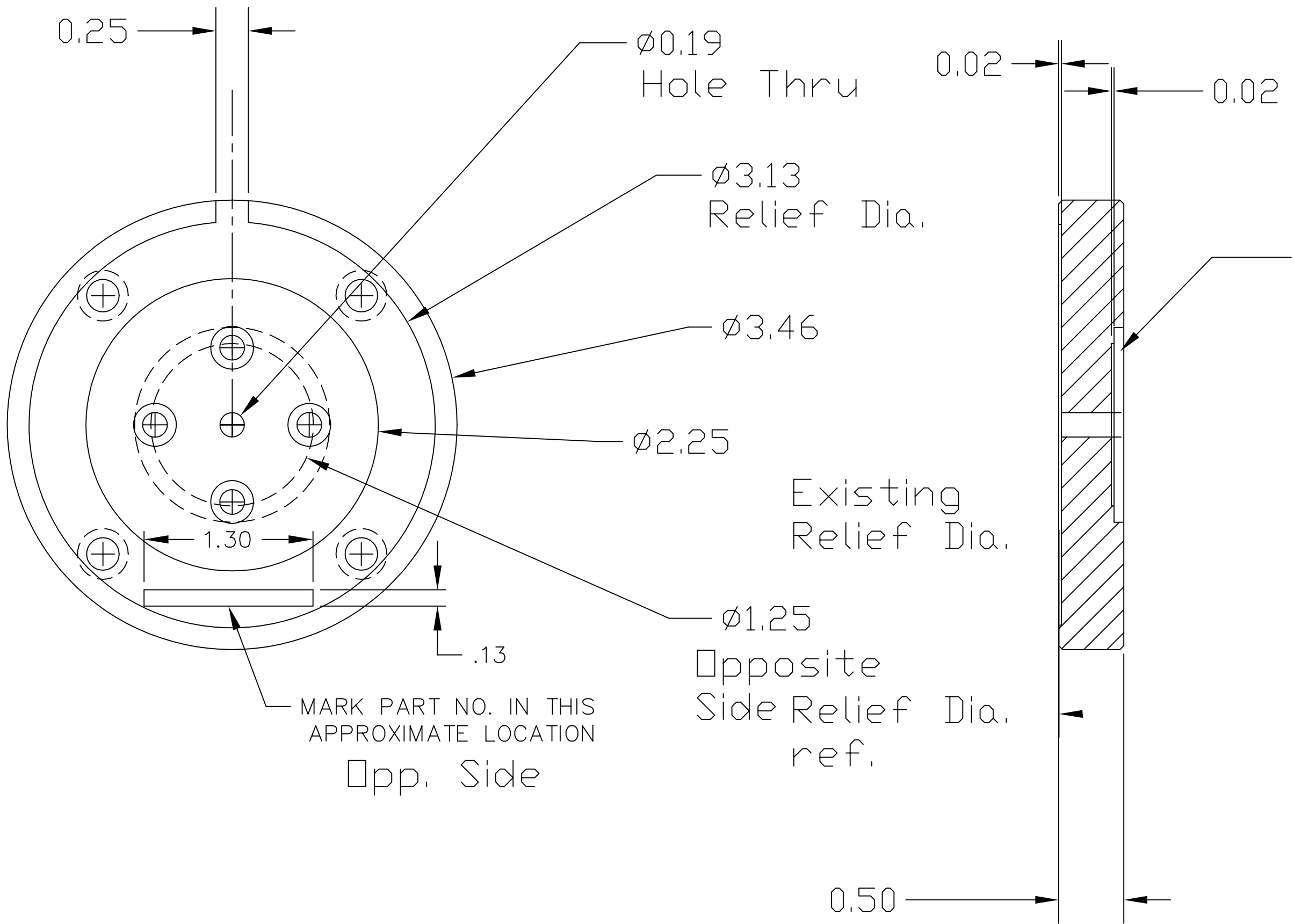
Liquid contaminants/Machining lubricants
 Liquids containing hydrocarbons or other contaminants, other than the machining fluids specified herein, shall not be allowed to come into contact with suspension material at any time. All machining fluids shall be water soluble and free of sulfur, chlorine and silicone; such as Cincinnati Milacron's Cimtech 410 (stainless steel).

Identification, Serial Number
 A serial number shall be etched, or scribed on the part see note drawing note.

Serial Number Format
 The Serial number shall be of the format: D99xxxx-x-001

Example: D990021-A-001
 The drawing number, The revision number, The sequential part number

Purchase Part:
 OPTO SIGMA
 #148-3320
 (rod and base)



NOTE:
 Existing Relief Dia.

MARK PART NO. IN THIS APPROXIMATE LOCATION
 Opp. Side

Existing Relief Dia.
 Opposite Side Relief Dia. ref.

REF. QTY.	PART or DRWG No.	NOMENCLATURE or DESCRIPTION	MATERIAL
PARTS and MATERIAL LIST			
			LIGO CALIFORNIA INSTITUTE OF TECHNOLOGY MASSACHUSETTS INSTITUTE OF TECHNOLOGY
			TITLE Base, ETM Rod Mount, Short
			CAD FILE: D990463-A SIZE: B DWG. NO.: D990463-A
			SCALE: FULL SHEET SHEET#

UNLESS OTHERWISE SPECIFIED DIMENSIONS ARE IN INCHES			
TOLERANCES: FRACTIONAL ± ANGULAR ± ANGULARMACH ± BEND ± TWO PLACE DECIMAL ±	THREE PLACE DECIMAL ± FINISHED SURFACE RMS BREAK CORNERS IN OUT REMOVE ALL BURRS	MATERIAL: See Note	HEAT TREAT: FINISH:
DWG. NO.	DESCRIPTION	USED ON: XXX	NEXT ASSY: XXX
REFERENCE DRAWINGS			

6 5 4 3 2 1