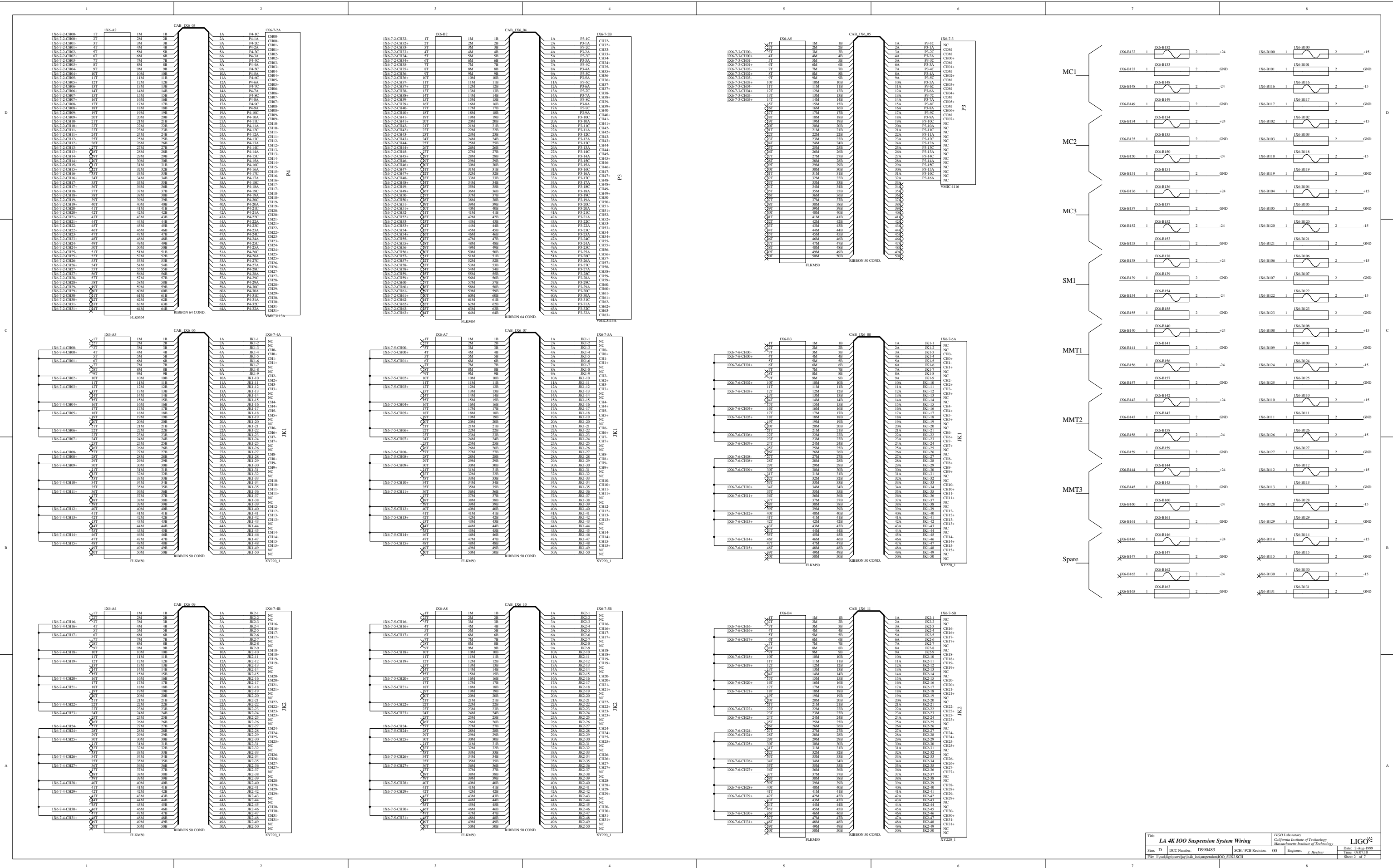
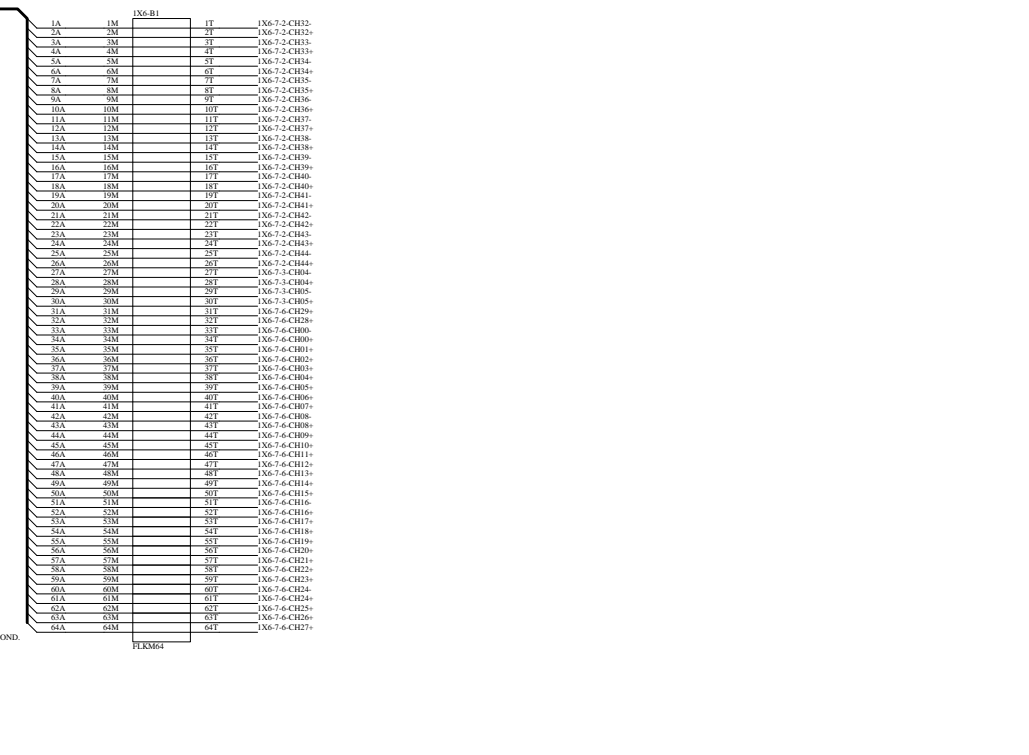
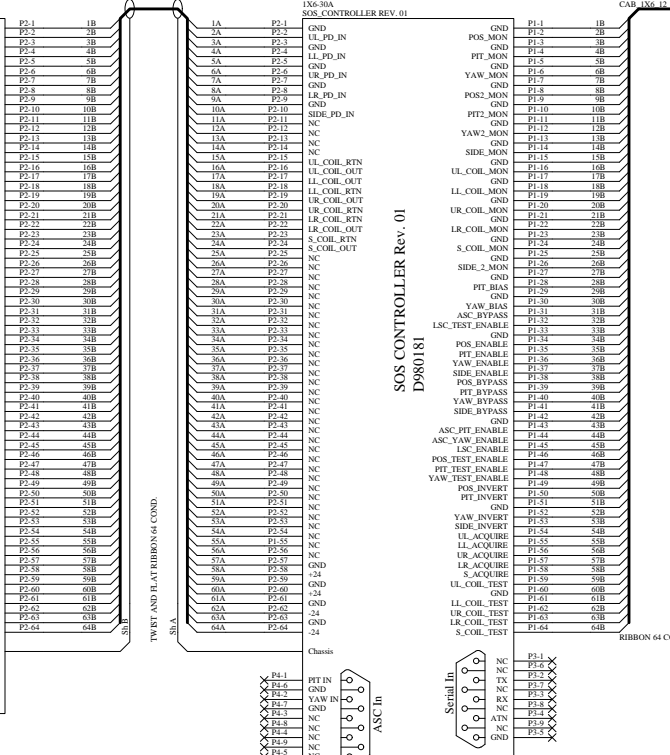
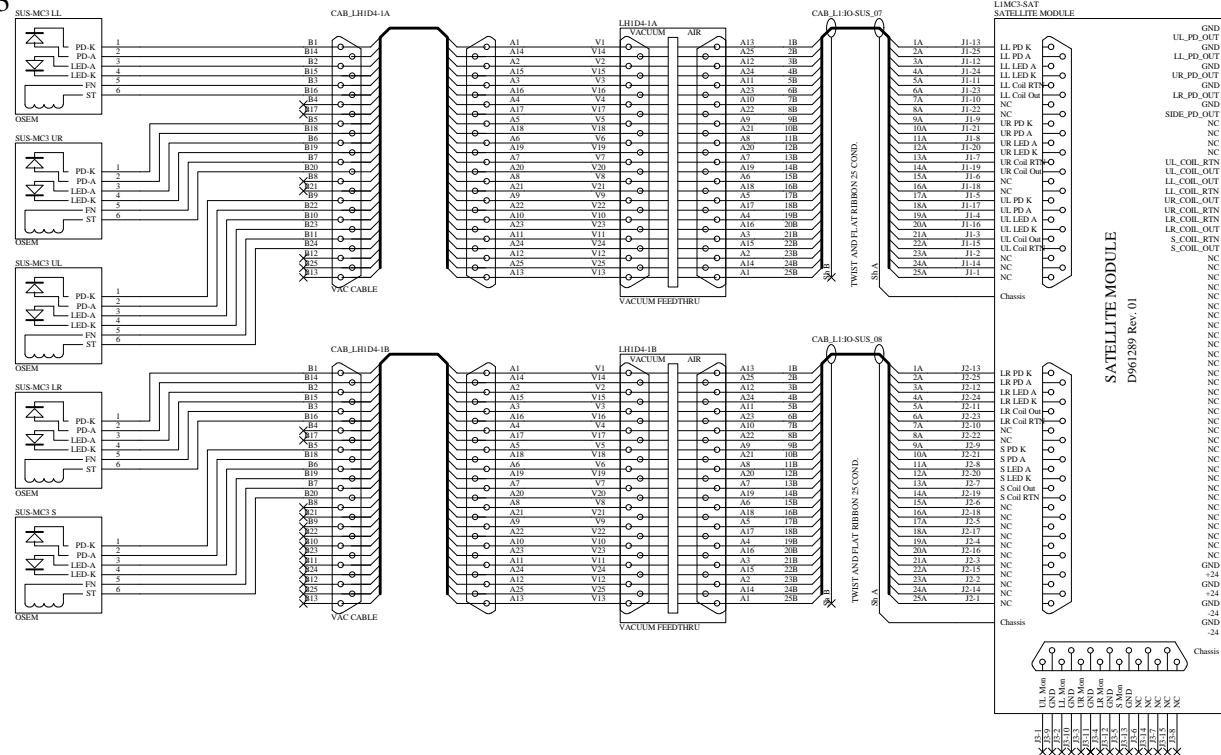


Notes:
 1. IX6-7-2 is VMC 3113A ADC module.
 2. IX6-7-3 is VMC 4100 DAC module.
 3. IX6-7-4 is XYCOM XY 220 binary out module.
 4. IX6-7-5 is XYCOM XY 220 binary out module.
 5. IX6-7-6 is XYCOM XY 220 binary out module.
 6. See Sheet 2 for net connections.

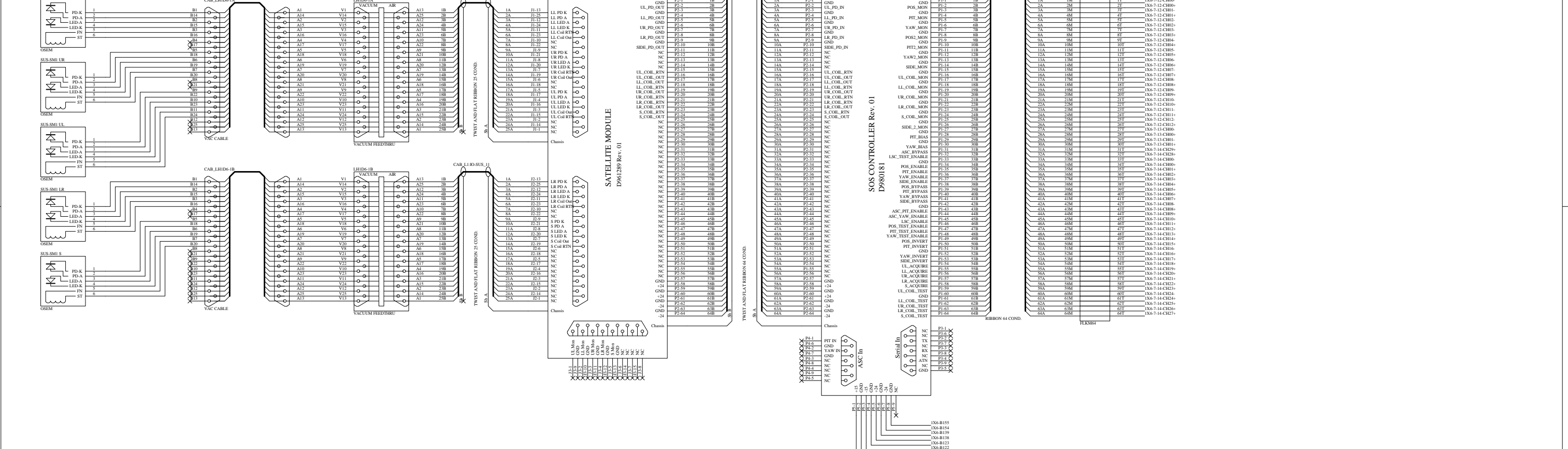


MC3

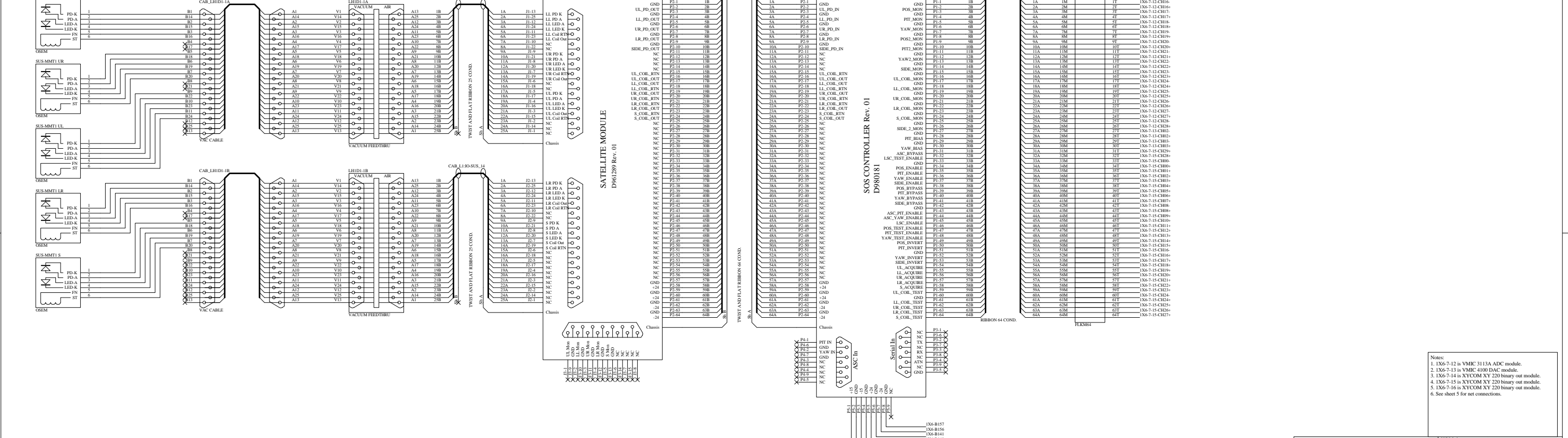


Notes:
 1. IX6-7-2 is VMC 3113A ADC module.
 2. IX6-7-3 is VMC 4100 DAC module.
 3. IX6-7-4 is XYCOM XY 220 binary out module.
 4. IX6-7-5 is XYCOM XY 220 binary out module.
 5. IX6-7-6 is XYCOM XY 220 binary out module.
 6. See sheet 2 for net connections.

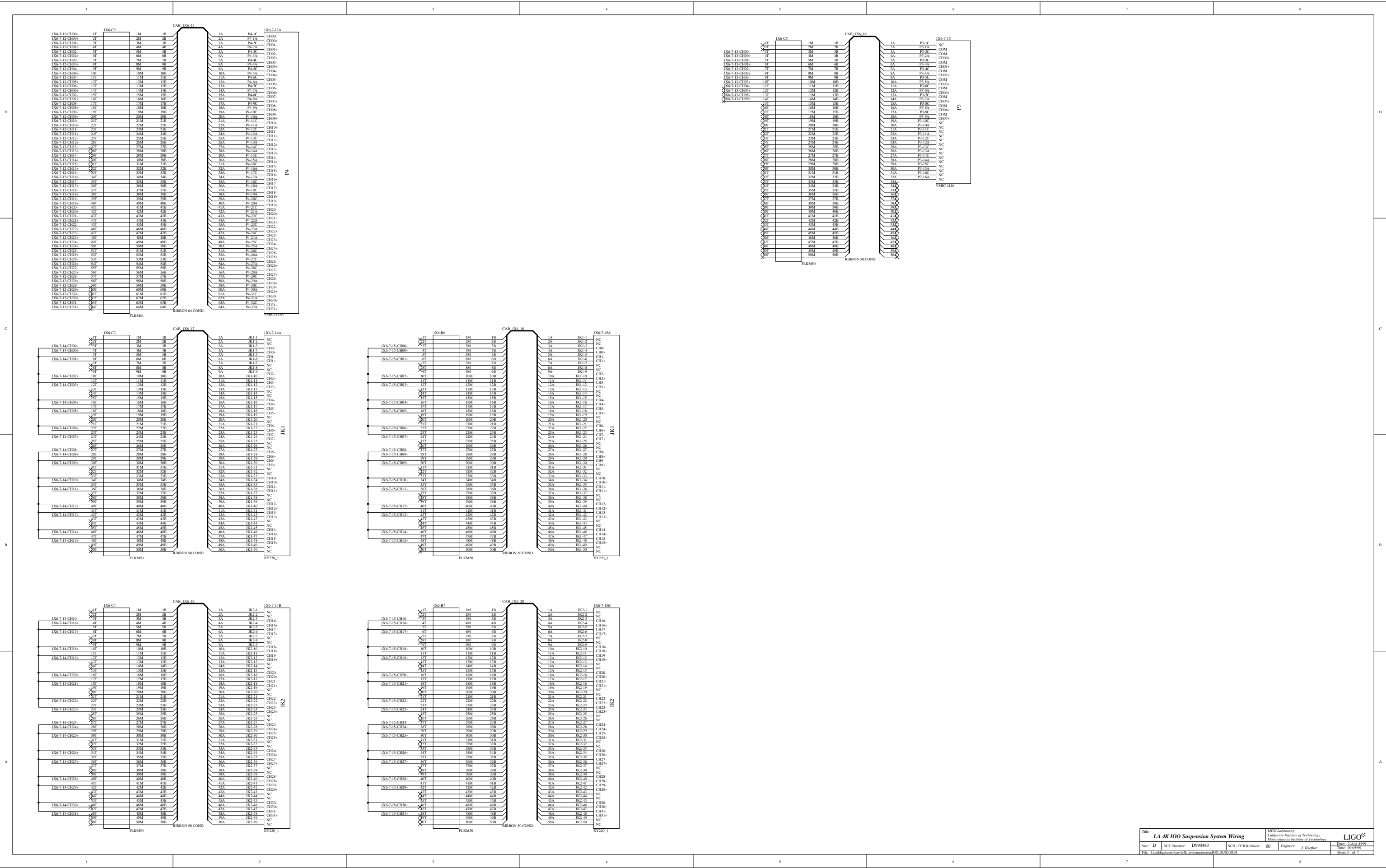
SM1



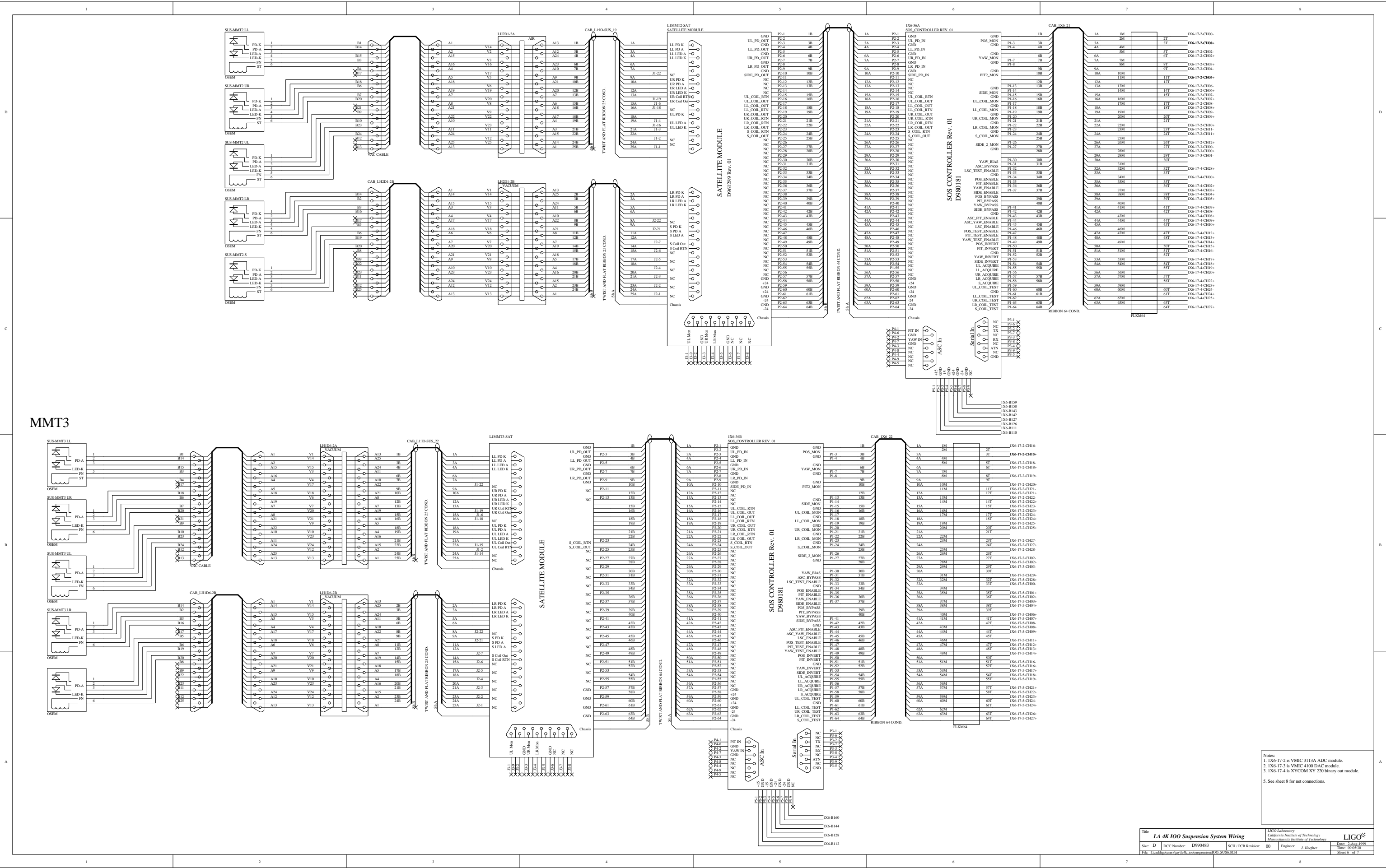
MMT1



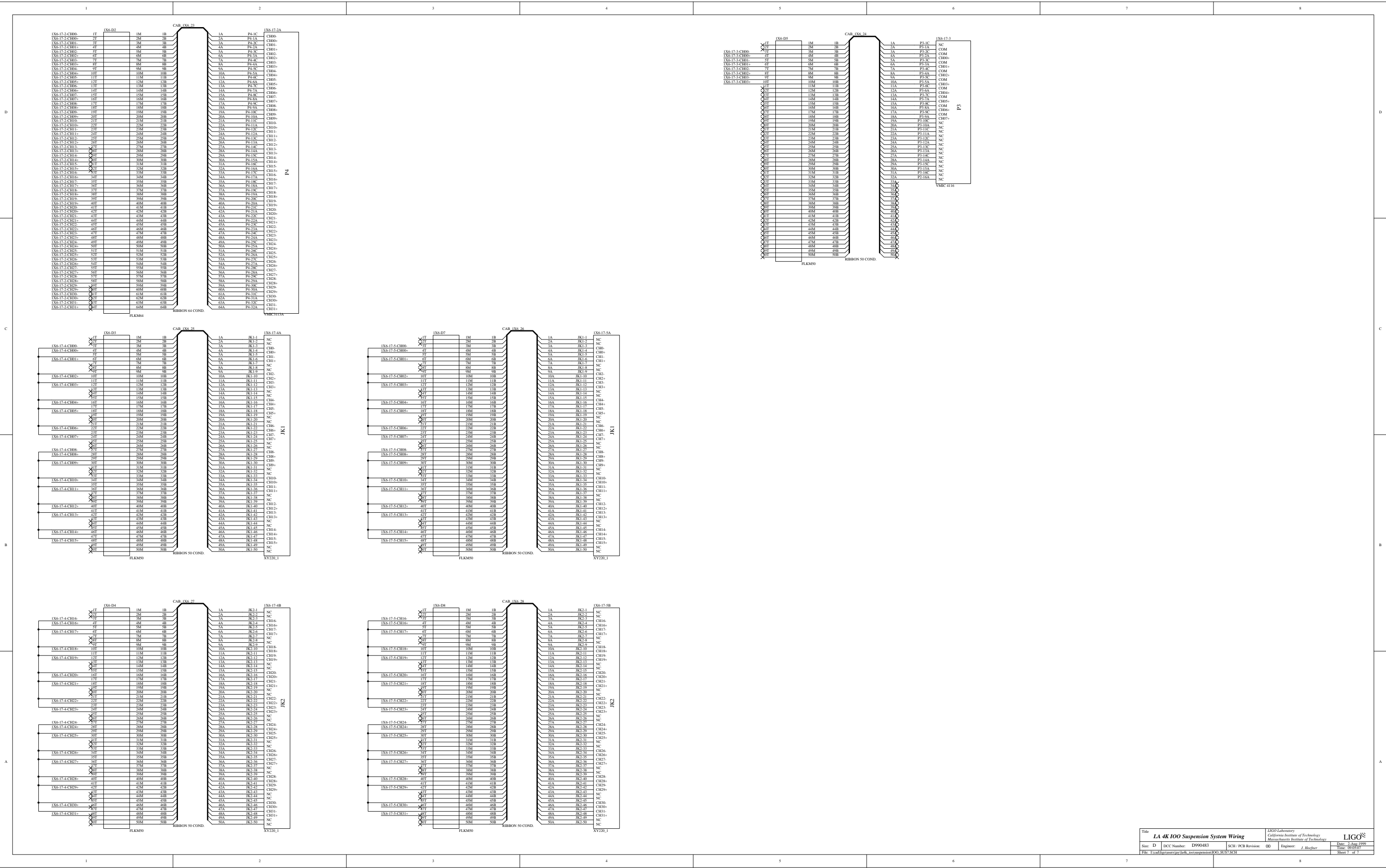
Notes:
 1. IX6-7-12 is VMIC 3113A ADC module.
 2. IX6-7-13 is VMIC 4100 DAC module.
 3. IX6-7-14 is XYCOM XY 220 binary out module.
 4. IX6-7-15 is XYCOM XY 220 binary out module.
 5. IX6-7-16 is XYCOM XY 220 binary out module.
 6. See sheet 5 for net connections.



MMT3



- Notes:
1. IX6-17-2 is VMIC 3113A ADC module.
 2. IX6-17-3 is VMIC 4100 DAC module.
 3. IX6-17-4 is XYCOM XY 220 binary out module.
5. See sheet 8 for net connections.



1 2 3 4 5 6 7 8

D

D

C

C

B

B

A

A

100_SUS1
100_SUS1.SCH

100_SUS2
100_SUS2.SCH

100_SUS3
100_SUS3.SCH

100_SUS4
100_SUS4.SCH

100_SUS5
100_SUS5.SCH

100_SUS6
100_SUS6.SCH

100_SUS7
100_SUS7.SCH

1 2 3 4 5 6 7 8