

1

2

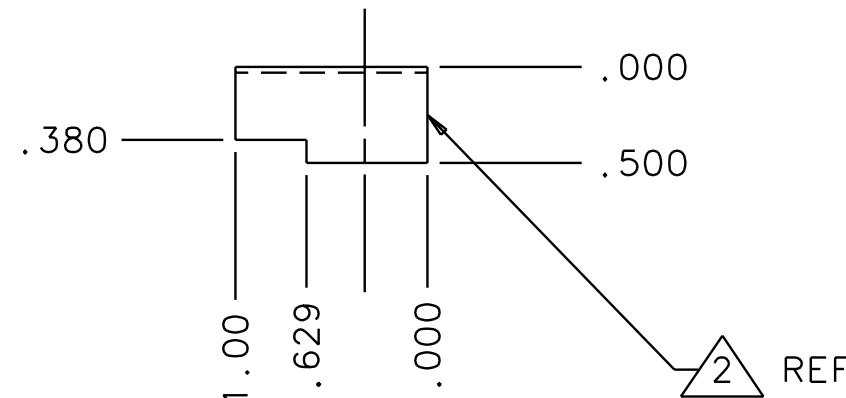
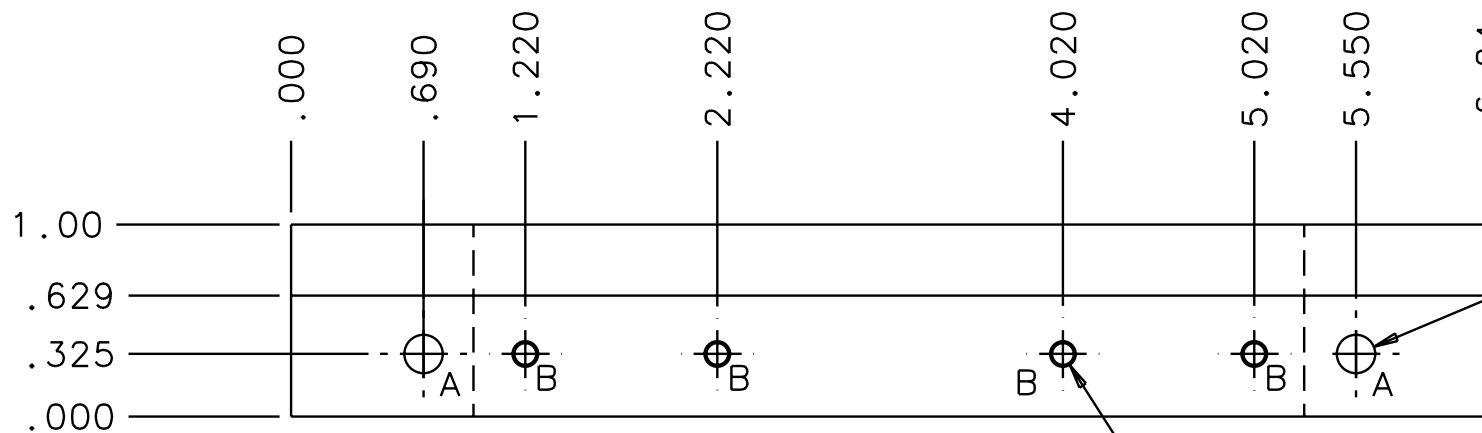
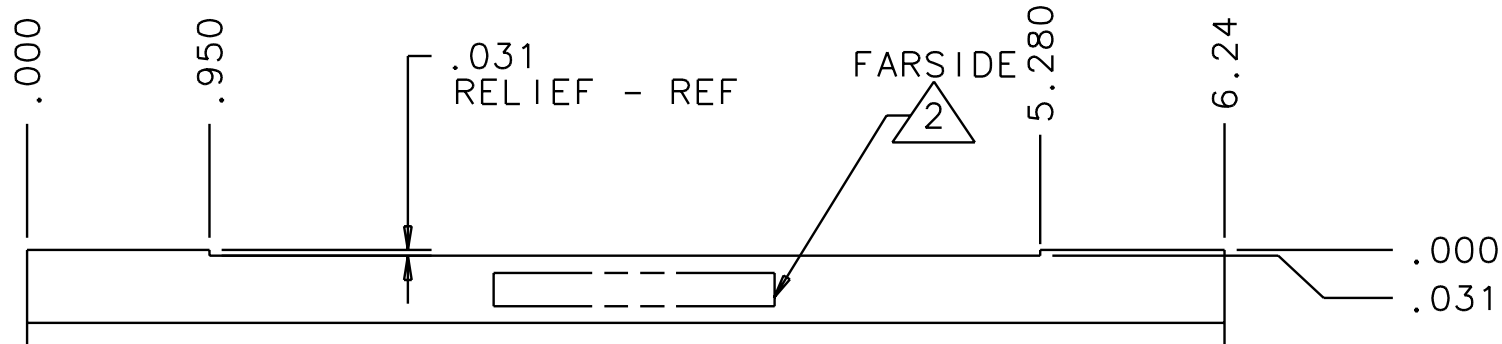
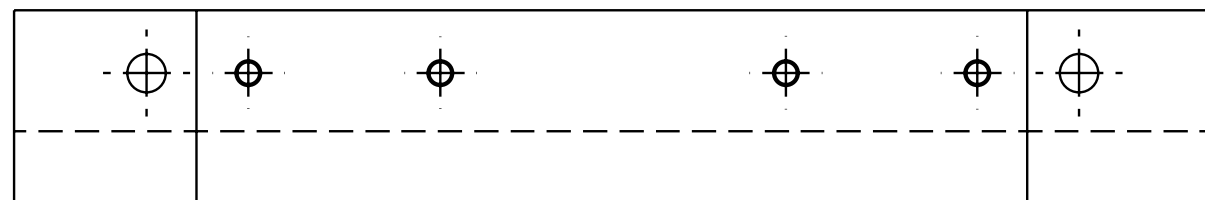
3

4

NOTES: (UNLESS OTHERWISE SPECIFIED)

1. CUTTING FLUIDS TO BE WATER SOLUABLE AND FREE OF SULFUR, CHLORINE, AND SILICONE. STEEL STAMP OR ENGRAVE THE DRAWING PART NUMBER ON NOTED FACE OF PART FOLLOWED BY "S/N" THEN A THREE DIGIT SERIAL NUMBER. SERIAL NUMBERS TO START AT 001 FOR FIRST PART AND PROCEED IN A CONSECUTIVE MANNER TO A MAXIMUM OF 999, FOR EACH SUCCEEDING PART PRODUCED. USE 0.13 HIGH CHARACTERS. EXAMPLE: D990484-A S/N 001

REV	DATE	DRAWN BY	CHECKED	DCC	DCN/DESCRIPTION
A	12-10-01	J.H.Romie			E010364/INITIAL RELEASE



Ø.203 THRU
2 PLACES - MARKED "A"

.136-32 UNC-2B THRU
4 PLACES - MARKED "B"

QTY REQD	FSCM NO	PART OR IDENTIFYING NO	NOMENCLATURE OR DESCRIPTION	MATERIAL SPECIFICATION	ITEM NO
PARTS LIST					
UNLESS OTHERWISE SPECIFIED DIMENSIONS ARE IN INCHES TOLERANCES ARE: FRACTIONS DECIMALS 0.XX±0.01 0.XXX±0.005 ANGLES±0.5°			APPROVALS DRAWN J. Romie CHECKED	DATE 8/99	TITLE CALIFORNIA INSTITUTE OF TECHNOLOGY MASSACHUSETTS INSTITUTE OF TECHNOLOGY RAIL, LITTLE BEAM DUMPS
DO NOT SCALE DRAWING			MATERIAL 6061-T6 ALUM	SIZE B	DWG NO. D990484 REV. A
NEXT ASSEMBLY D990490			FILE LOCATION /home/dcc/docs/D990484.pdf	SCALE 1/1	SHEET 1 OF 1