

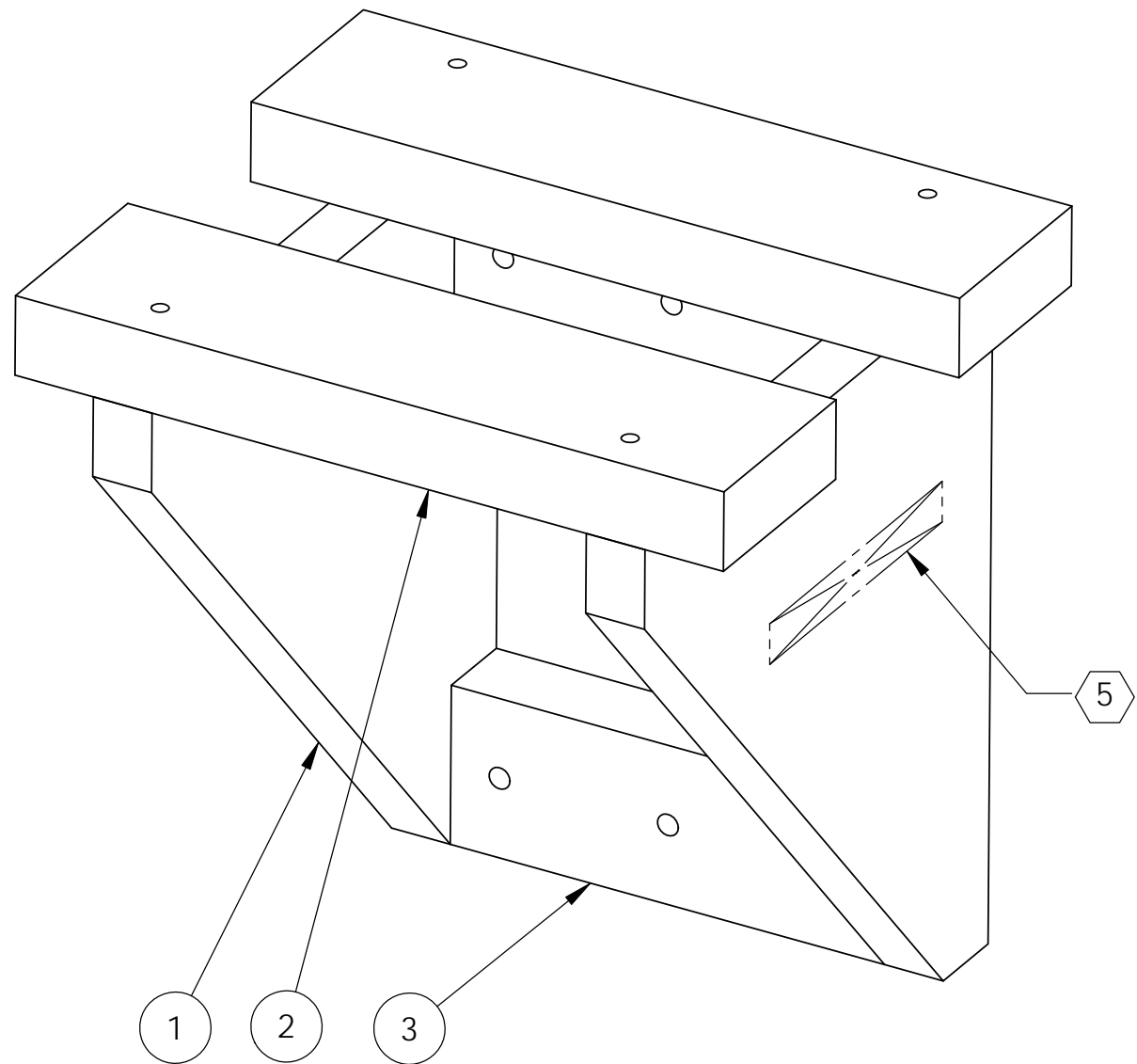
D1002493 aLIGO OPLEV PERISCOPE MOUNTING AND INSTALL SHELF WELDMENT, PART PDM REV: X-013, DRAWING PDM REV: X-003

8 7 6 5 4 3 2 1

| REV. | DATE        | DCN #       | DRAWING TREE # |
|------|-------------|-------------|----------------|
| v1   | 18 FEB 2011 | E1100106-v1 | -              |
| -    | -           | -           | -              |
| -    | -           | -           | -              |

NOTES CONTINUED:

- 5) SCRIBE, ENGRAVE (A VIBRATORY TOOL MAY BE USED), LASER MARK OR MECHANICALLY STAMP (NO INKS OR DYES) DRAWING PART NUMBER, REVISION (AND VARIANT OR "TYPE" IF APPLICABLE) ON NOTED SURFACE OF PART FOLLOWED ON THE NEXT LINE WITH A THREE DIGIT SERIAL NUMBER. SERIAL NUMBERS START AT 001 FOR THE FIRST ARTICLE AND PROCEED CONSECUTIVELY. USE MINIMUM 0.12" HIGH CHARACTERS, UNLESS THE SIZE OF THE PART DICTATES SMALLER CHARACTERS. EXAMPLE: DXXXXXX-VY, TYPE-XX, S/N XXX
- 6. APPROXIMATE WEIGHT = 19.39 LBS.
- 7. SURFACE FINISH TO BE AS-PROCESSED FROM MILL/SUPPLIER, FREE FROM SCRATCHES OR GOUGES.



| ITEM NO. | PART NUMBER | DESCRIPTION                                       | MATERIAL | SPARE | REQ | TOTAL |
|----------|-------------|---|----------|-------|-----|-------|
| 3        | D1100329    | aLIGO OPLEV STIFFENER WELDMENT BACKING SUPPORT    | 304 SSTL |       | 2   | 2     |
| 2        | D1002499    | aLIGO OPLEV STIFFENER WELDMENT BAR                | 304 SSTL |       | 2   | 2     |
| 1        | D1002492    | aLIGO OPLEV PERISCOPE MOUNTING AND INSTALL GUSSET | 304 SSTL |       | 2   | 2     |

PARTS LIST

|   |  |  |  |   |  |            |  |  |                     |                  |                             |                   |
|---|--|--|--|---|--|------------|--|--|---------------------|------------------|-----------------------------|-------------------|
| DIMENSIONS ARE IN INCHES                                  |  | NOTES AND TOLERANCES: (UNLESS OTHERWISE SPECIFIED)   |  | CALIFORNIA INSTITUTE OF TECHNOLOGY<br>MASSACHUSETTS INSTITUTE OF TECHNOLOGY |  | PART NAME  |  | aLIGO OPLEV PERISCOPE MOUNTING, AND INSTALL SHELF WELDMENT |                     |                  |                             |                   |
| TOLERANCES:<br>.XX ± .06<br>.XXX ± .010<br>ANGULAR ± 1.0° |  | 1. INTERPRET DRAWING PER ASME Y14.5-1994.<br>2. REMOVE ALL SHARP EDGES, .005-.015, FOR MACHINED PARTS. ROUND ALL EDGES APPROXIMATELY R.02 FOR SHEET METAL PARTS.<br>3. DO NOT SCALE FROM DRAWINGS.<br>4. ALL MACHINING FLUIDS MUST BE FULLY SYNTHETIC, FULLY WATER SOLUBLE AND FREE OF SULFUR, SILICONE, AND CHLORINE. |  | SYSTEM<br><b>ADVANCED LIGO</b>  |  | SUB-SYSTEM |  | DESIGNER<br>J. TERRAZAS                                    | DATE<br>17 FEB 2011 | SIZE<br><b>B</b> | DWG. NO.<br><b>D1002493</b> | REV.<br><b>v1</b> |
| MATERIAL<br>N/A   |  | FINISH<br>N/A μinch  |  | NEXT ASSY<br>D1100302   |  | APPROVAL   |  | SCALE: 1:4   |                     | PROJECTION:      |                             | SHEET 1 OF 2      |

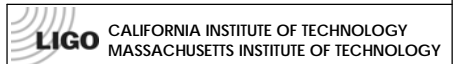
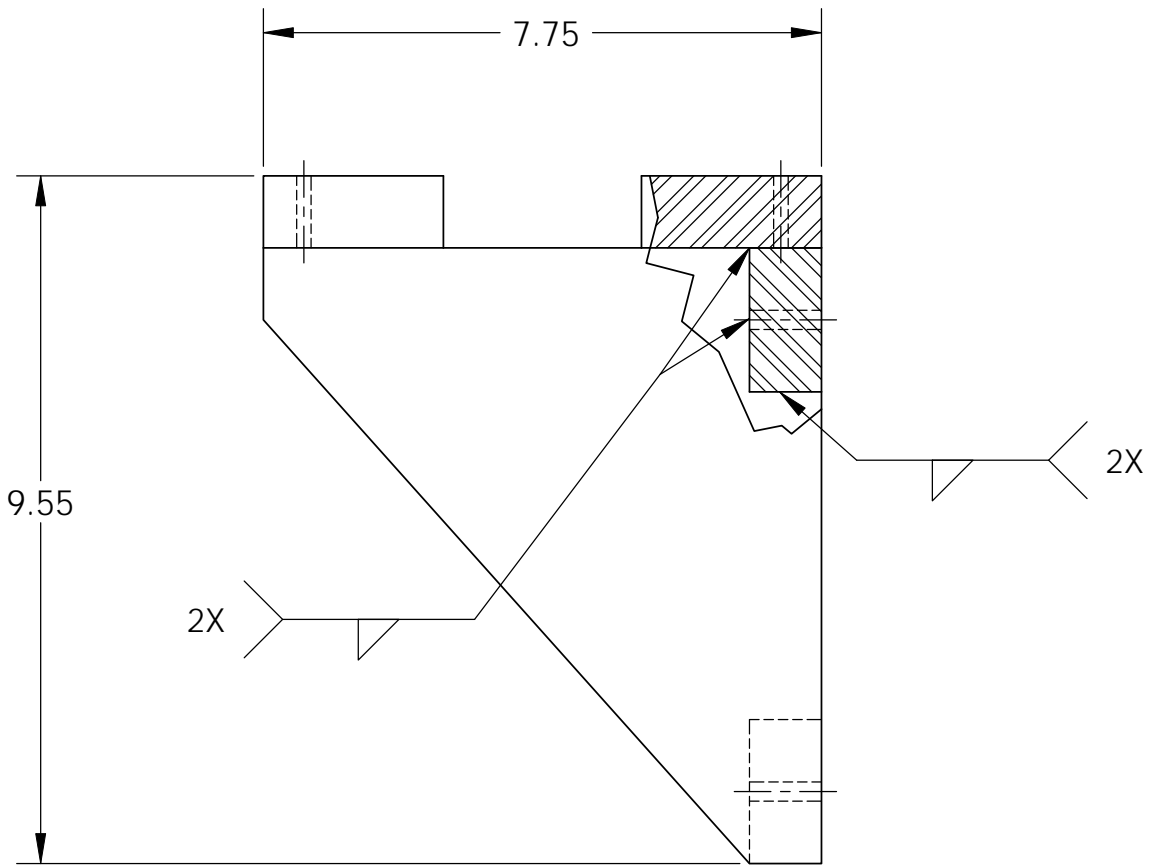
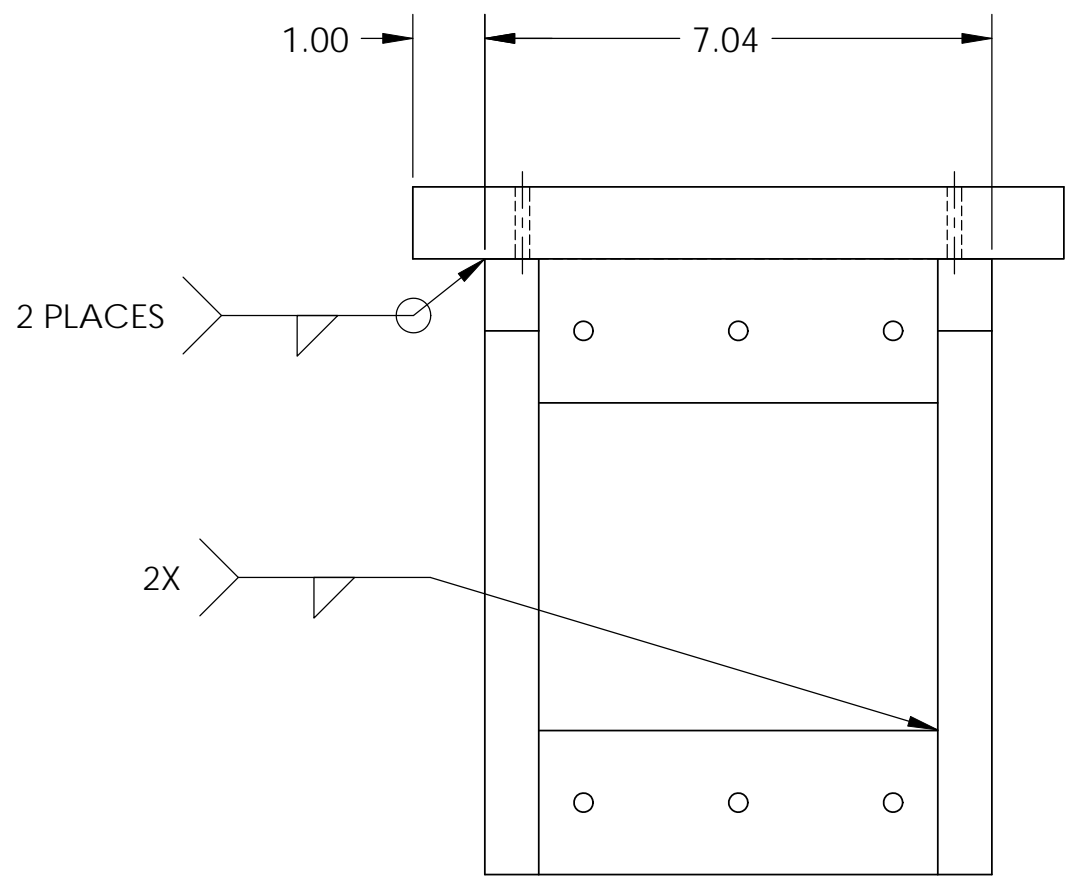
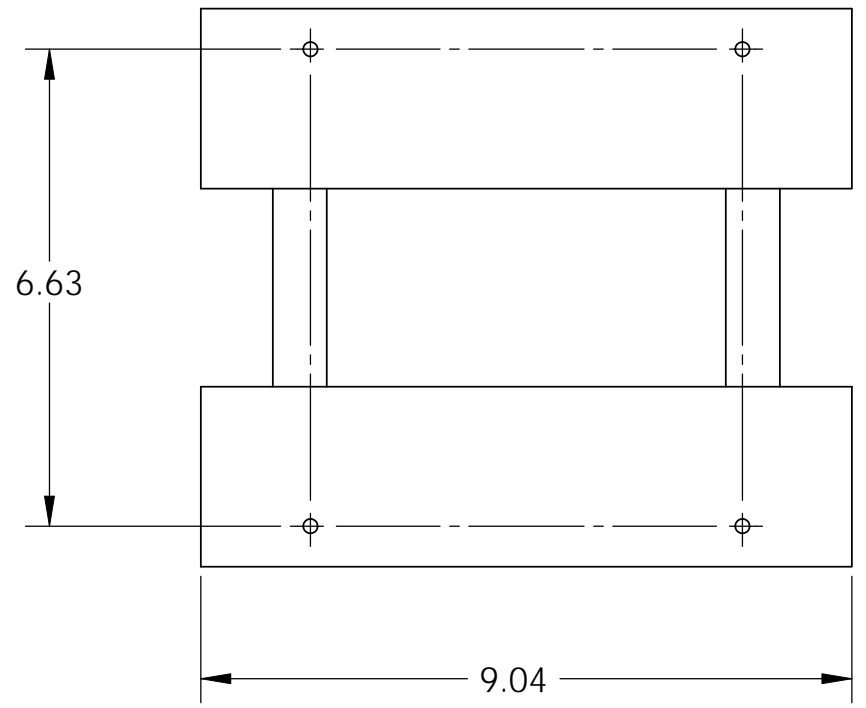
8 7 6 5 4 3 2 1

D1002493 aLIGO OPLEV PERISCOPE MOUNTING AND INSTALL SHELF WELDMENT, PART PDM REV: X-013, DRAWING PDM REV: X-003

8 7 6 5 4 3 2 1

D  
C  
B  
A

D  
C  
B  
A



|                  |                      |                           |
|------------------|----------------------|---------------------------|
| SIZE<br><b>B</b> | DWG. NO.<br>D1002493 | REV.<br>V1                |
| SCALE: 1:4       |                      | PROJECTION:  SHEET 2 OF 2 |

8 7 6 5 4 3 2 1