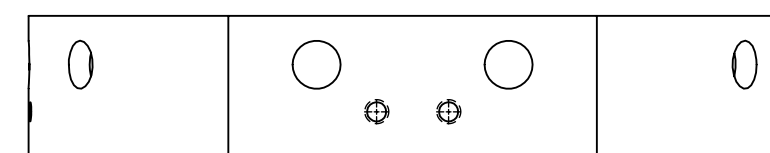
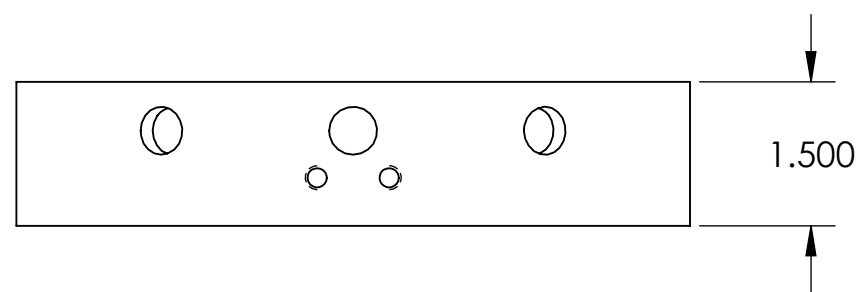
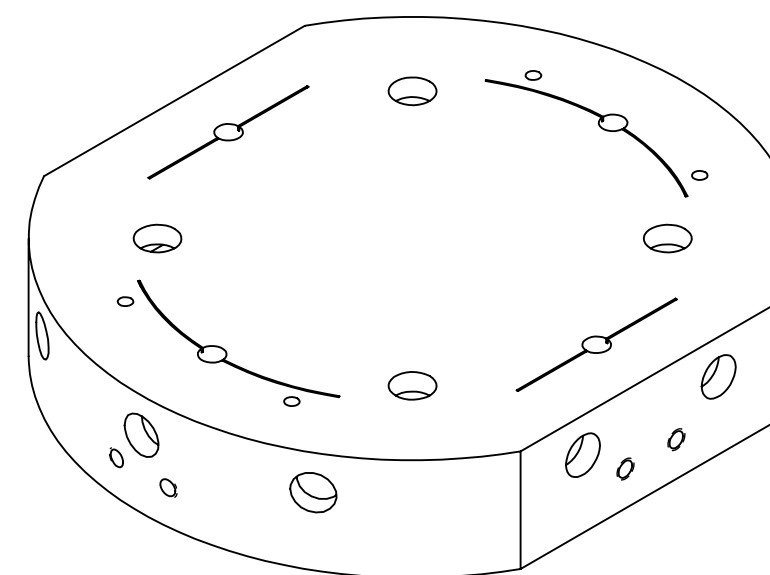
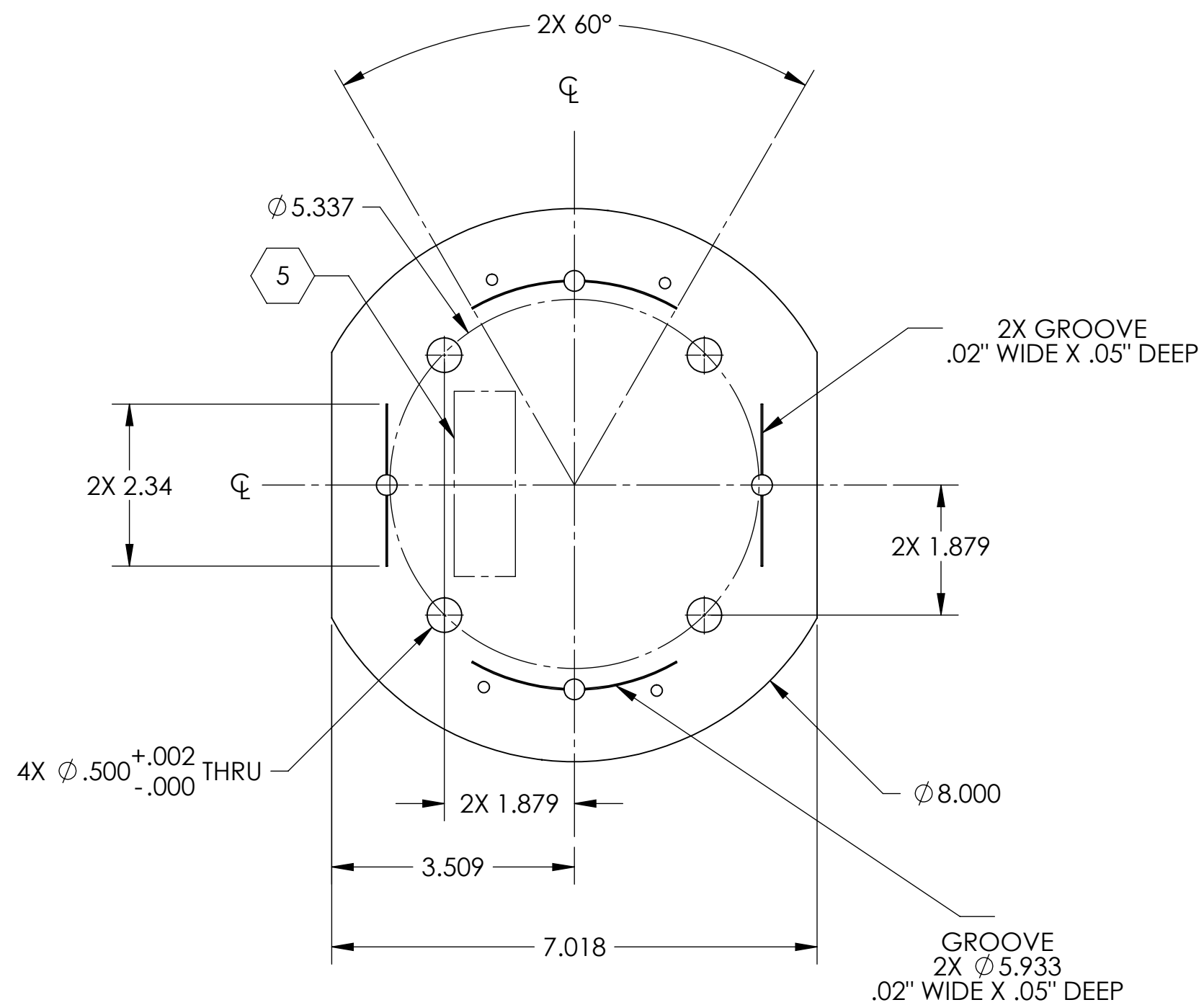


NOTES CONTINUED:

- 5. SCRIBE, ENGRAVE, OR MECHANICALLY STAMP (NO INKS OR DYES) DRAWING PART NUMBER, REVISION (AND VARIANT OR "TYPE" IF APPLICABLE) ON NOTED SURFACE OF PART FOLLOWED ON THE NEXT LINE WITH A THREE DIGIT SERIAL NUMBER. SERIAL NUMBERS START AT 500 FOR THE FIRST ARTICLE AND PROCEED CONSECUTIVELY. USE MINIMUM 0.12" HIGH CHARACTERS, UNLESS THE SIZE OF THE PART DICTATES SMALLER CHARACTERS. A VIBRATORY TOOL MAY BE USED. EXAMPLE: DXXXXXX-VY, TYPE-XX, S/N XXX
- 6. APPROXIMATE WEIGHT = 1.863 LB.
- 7. MACHINE ALL SURFACES TO REMOVE OXIDES AND MILL FINISH, USE OF ABRASIVE REMOVAL TECHNIQUES IS NOT ALLOWED.
- 8. ALL PARTS SHALL BE MANUFACTURED IN ACCORDANCE WITH LIGO SPECIFICATION E0900364.

REV.	DATE	DCN #	DRAWING TREE #
v1	01 MAR 2011	E0900502	E0900353
v2	27 OCT 2011	E1101059	E0900353
-	-	-	-



NOTES AND TOLERANCES: (UNLESS OTHERWISE SPECIFIED)

DIMENSIONS ARE IN INCHES

TOLERANCES:  
 .XX  $\pm .01$   
 .XXX  $\pm .005$

ANGULAR  $\pm 0.5^\circ$

1. INTERPRET DRAWING PER ASME Y14.5-1994.
2. REMOVE ALL SHARP EDGES,  $.02$  MIN.
3. DO NOT SCALE FROM DRAWING.
4. ALL MACHINING FLUIDS MUST BE FULLY SYNTHETIC, FULLY WATER SOLUBLE AND FREE OF SULFUR, SILICONE, AND CHLORINE.

MATERIAL: 6061-T6 Al  
 FINISH: 63  $\mu$ inch

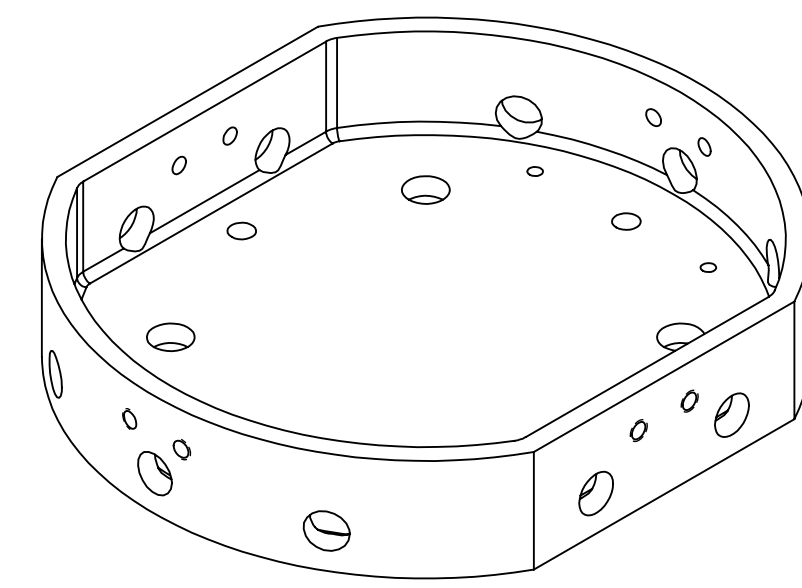
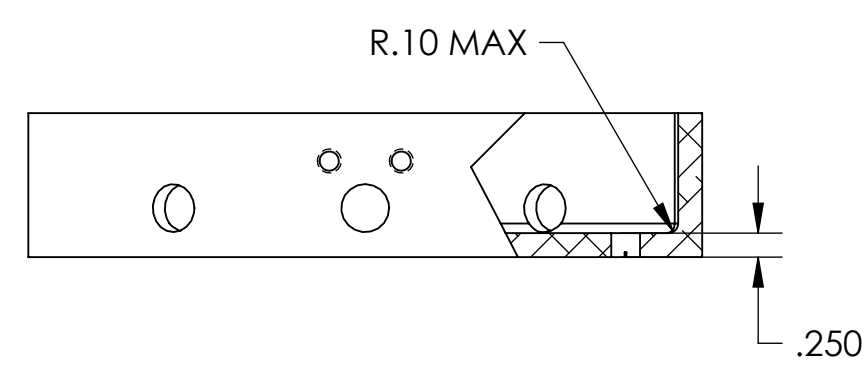
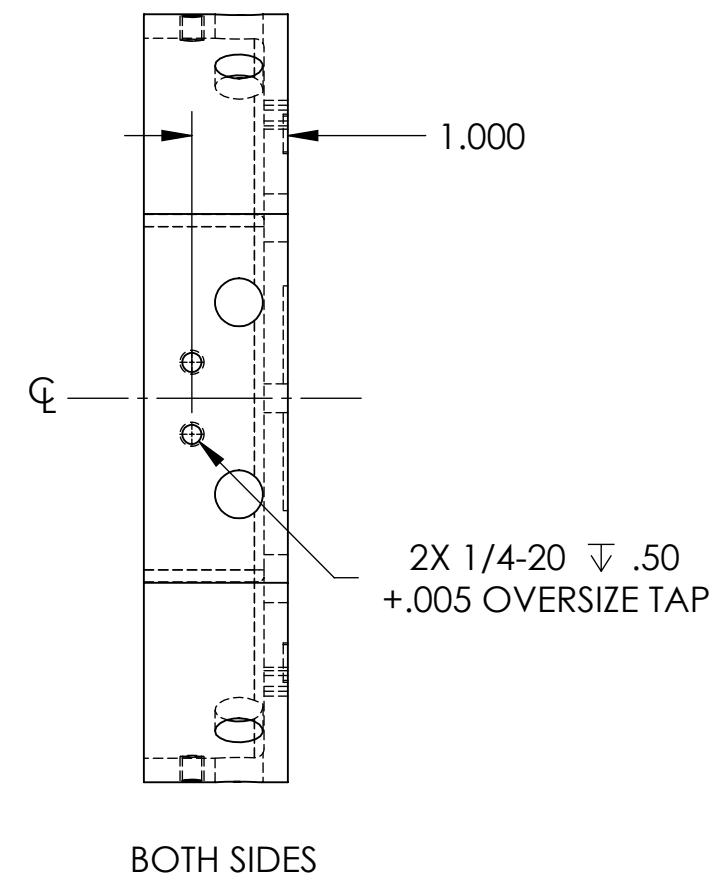
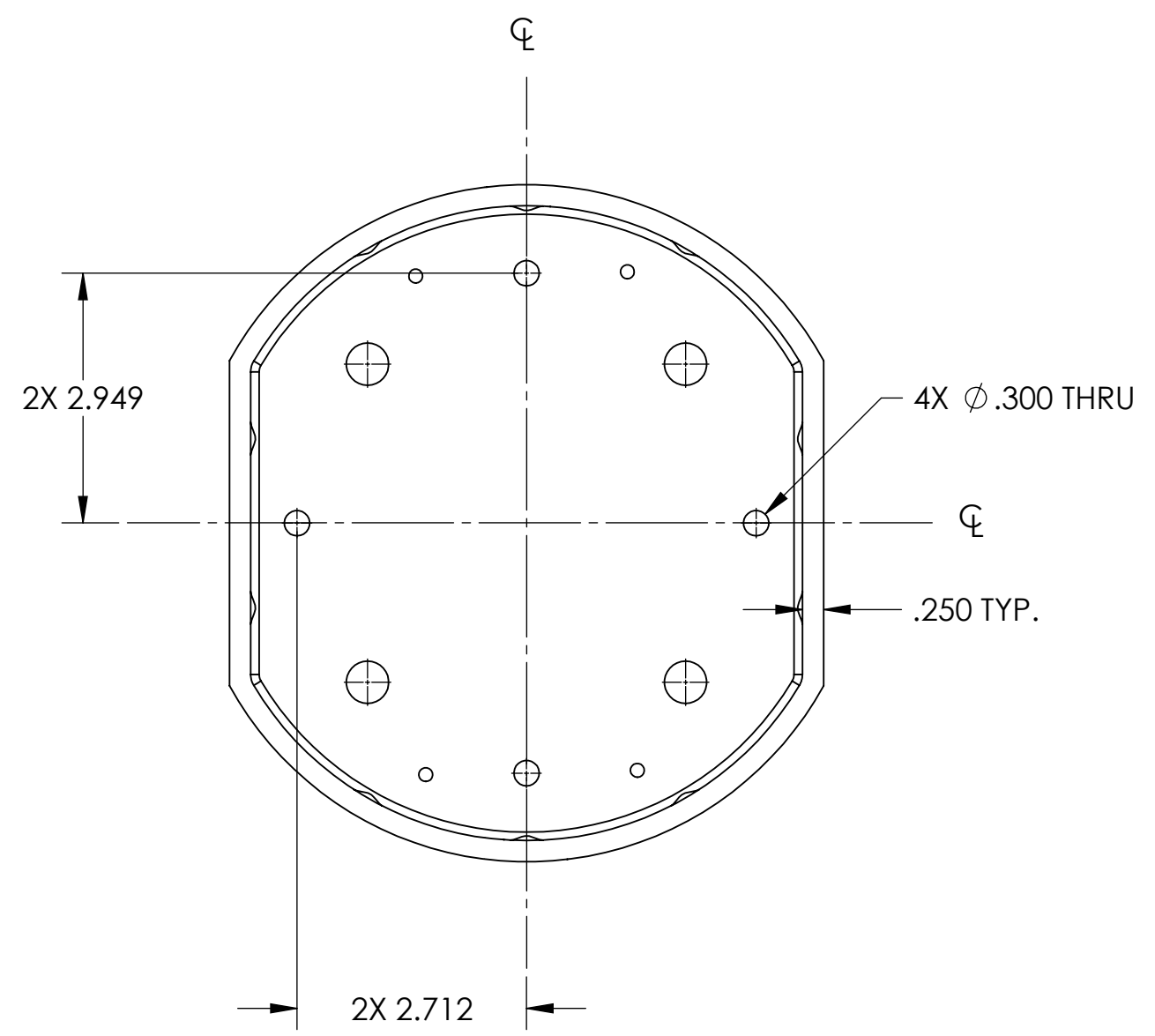
**LIGO** CALIFORNIA INSTITUTE OF TECHNOLOGY  
 MASSACHUSETTS INSTITUTE OF TECHNOLOGY

SYSTEM: ADVANCED LIGO  
 SUB-SYSTEM: SUS


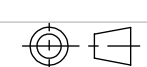
NEXT ASSY: D1002606

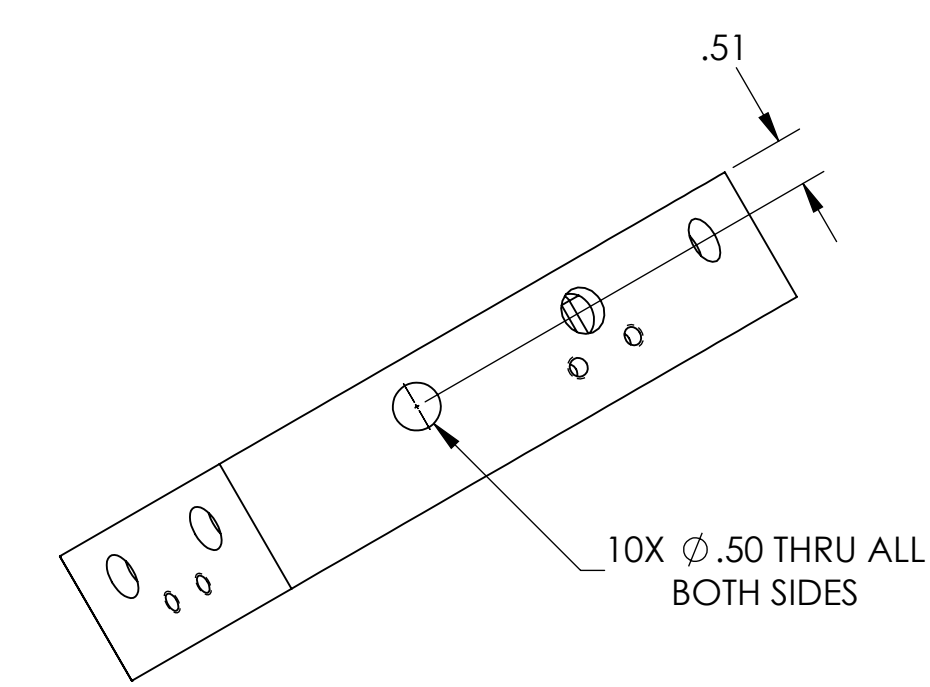
PART NAME: INTERMEDIATE MASS RING FIXTURE

DESIGNER	B. MOORE	06 OCT 2010	SIZE	DWG. NO.	REV.
DRAFTER	B. MOORE	15 NOV 2011	c	D1002607	v2
CHECKER	D. BRIDGES	17 NOV 2011			
APPROVAL			SCALE: 1:2	PROJECTION:	SHEET 1 OF 3

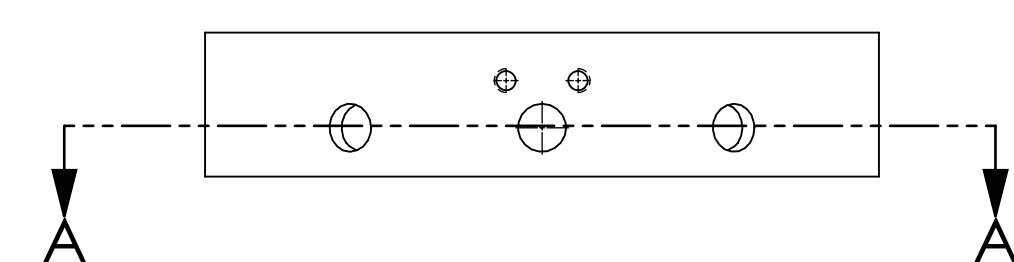
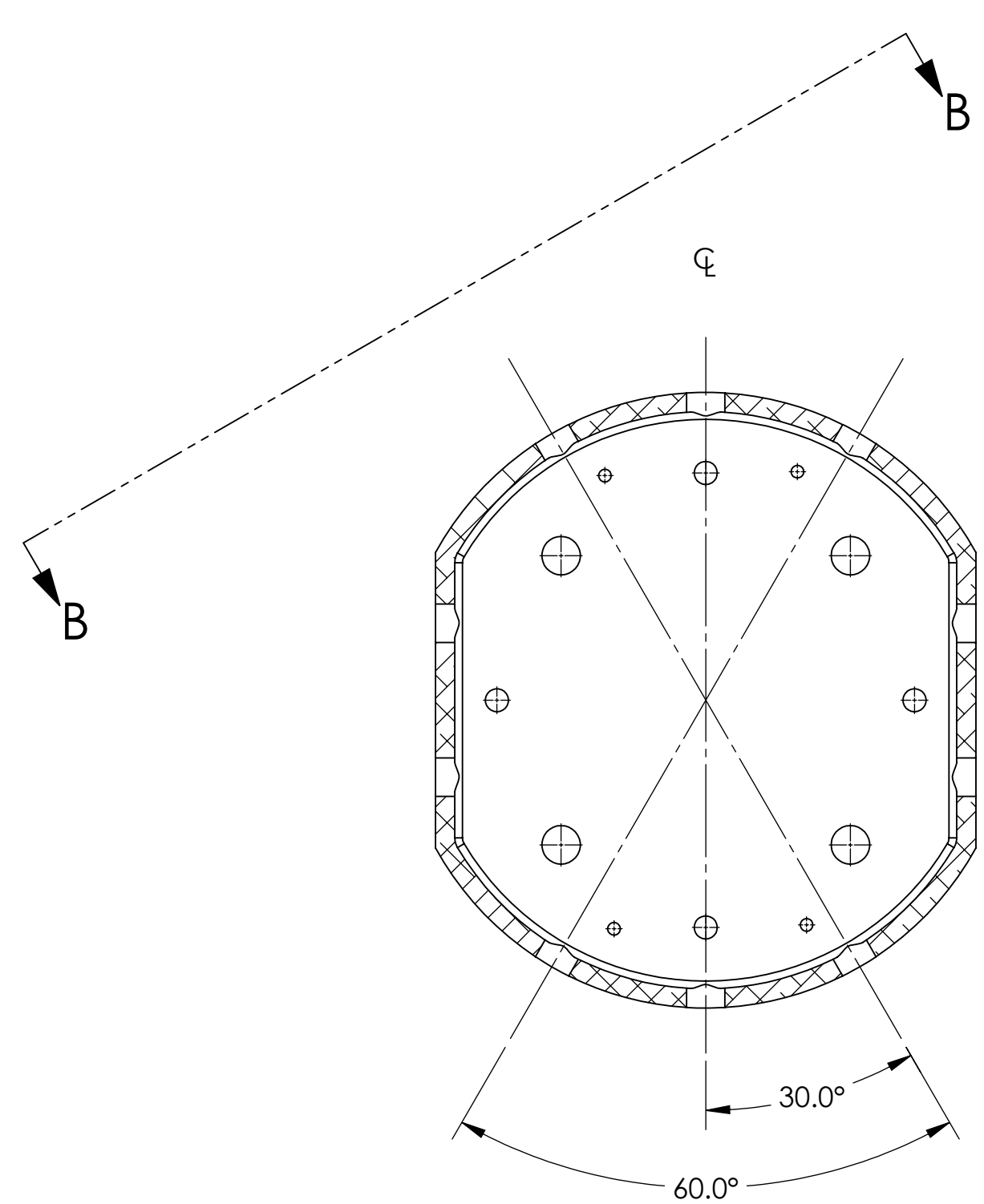



ISOMETRIC VIEW

 <b>LIGO</b> CALIFORNIA INSTITUTE OF TECHNOLOGY MASSACHUSETTS INSTITUTE OF TECHNOLOGY		REV.
SIZE	DWG. NO.	D1002607
<b>C</b>		<b>v2</b>
SCALE: 1:2	PROJECTION:	
		SHEET 2 OF 3



VIEW B-B



 <b>CALIFORNIA INSTITUTE OF TECHNOLOGY</b> <b>MASSACHUSETTS INSTITUTE OF TECHNOLOGY</b>		REV. <b>v2</b>
SIZE <b>C</b>	DWG. NO. <b>D1002607</b>	SHEET 3 OF 3
SCALE: 1:2	PROJECTION: 