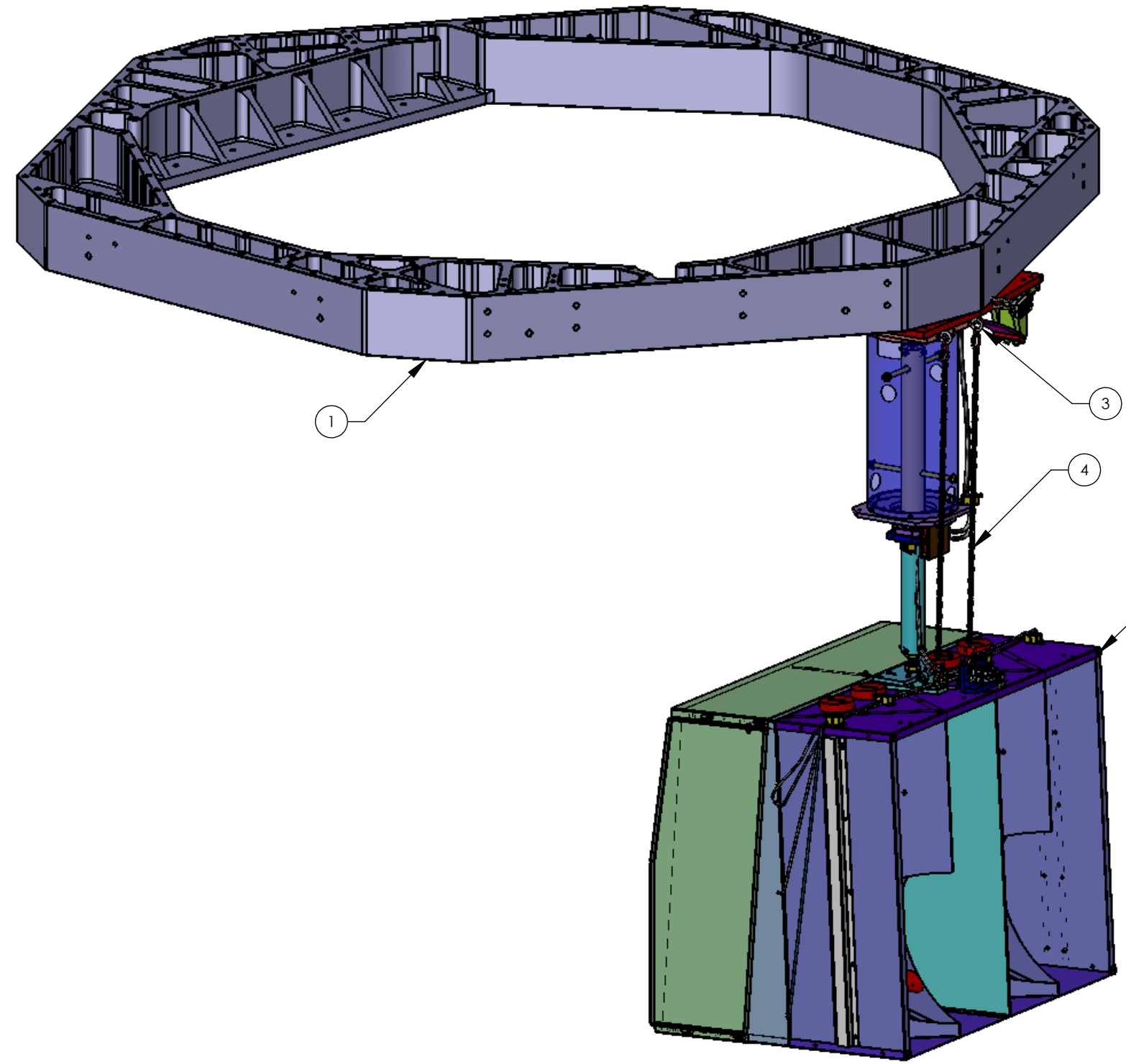


8 7 6 5 4 3 2 1

NOTES CONTINUED:
 5

| REV. | DATE | DCN # | DRAWING TREE # |
|------|-------------|----------|----------------|
| v1 | 09 MAY 2011 | E1100355 | |
| | | | |

D
C
B
A



| 7 | 92240A632 | HEX HD SCREW # 3/8-16X 2, McMASTER | 18-8 SSSL | 6 | 0 |
|----------|--------------|------------------------------------|------------|-------------------------|-------------|
| 6 | 93852A104 | WASHER #3/8, McMASTER | 18-8 SSSL | 6 | 0 |
| 5 | D1001700 | SLC INTERFACE MOUNTING CLAMP | 304 SSSL | 6 | 0 |
| 4 | Chain Safety | Chain ACB Assy | N/A | 2 | 0 |
| 3 | 33045T770 | Eyebolt, .25-20 x 1" Lg., 304 SSSL | | 4 | 0 |
| 2 | D0901376 | ARM CAVITY BAFFLE FINAL ASSY | N/A | 1 | 0 |
| 1 | D0900894 | Stage 0 Bottom, aLIGO BSC ISI | 6061-T6 Al | 1 | 0 |
| ITEM NO. | PART NUMBER | DESCRIPTION | MATERIAL | Def ault /RE Q | SPARE TOTAL |

NOTES AND TOLERANCES: (UNLESS OTHERWISE SPECIFIED)

DIMENSIONS ARE IN INCHES

TOLERANCES:
 .XX ± .03
 .XXX ± .010
 ANGULAR ± 1.0°

1. INTERPRET DRAWING PER ASME Y14.5-1994.
 2. REMOVE ALL SHARP EDGES, .005-.015, FOR MACHINED PARTS. ROUND ALL EDGES APPROXIMATELY R.02 FOR SHEET METAL PARTS.
 3. DO NOT SCALE FROM DRAWING.
 4. ALL MACHINING FLUIDS MUST BE FULLY SYNTHETIC, FULLY WATER SOLUBLE AND FREE OF SULFUR, SILICONE, AND CHLORINE.

MATERIAL N/A FINISH N/A μinch

LIGO CALIFORNIA INSTITUTE OF TECHNOLOGY
 MASSACHUSETTS INSTITUTE OF TECHNOLOGY

SYSTEM ADVANCED LIGO SUB-SYSTEM AOS

PART NAME
ACB INTERFACE PLATE MTG LOCATIONS

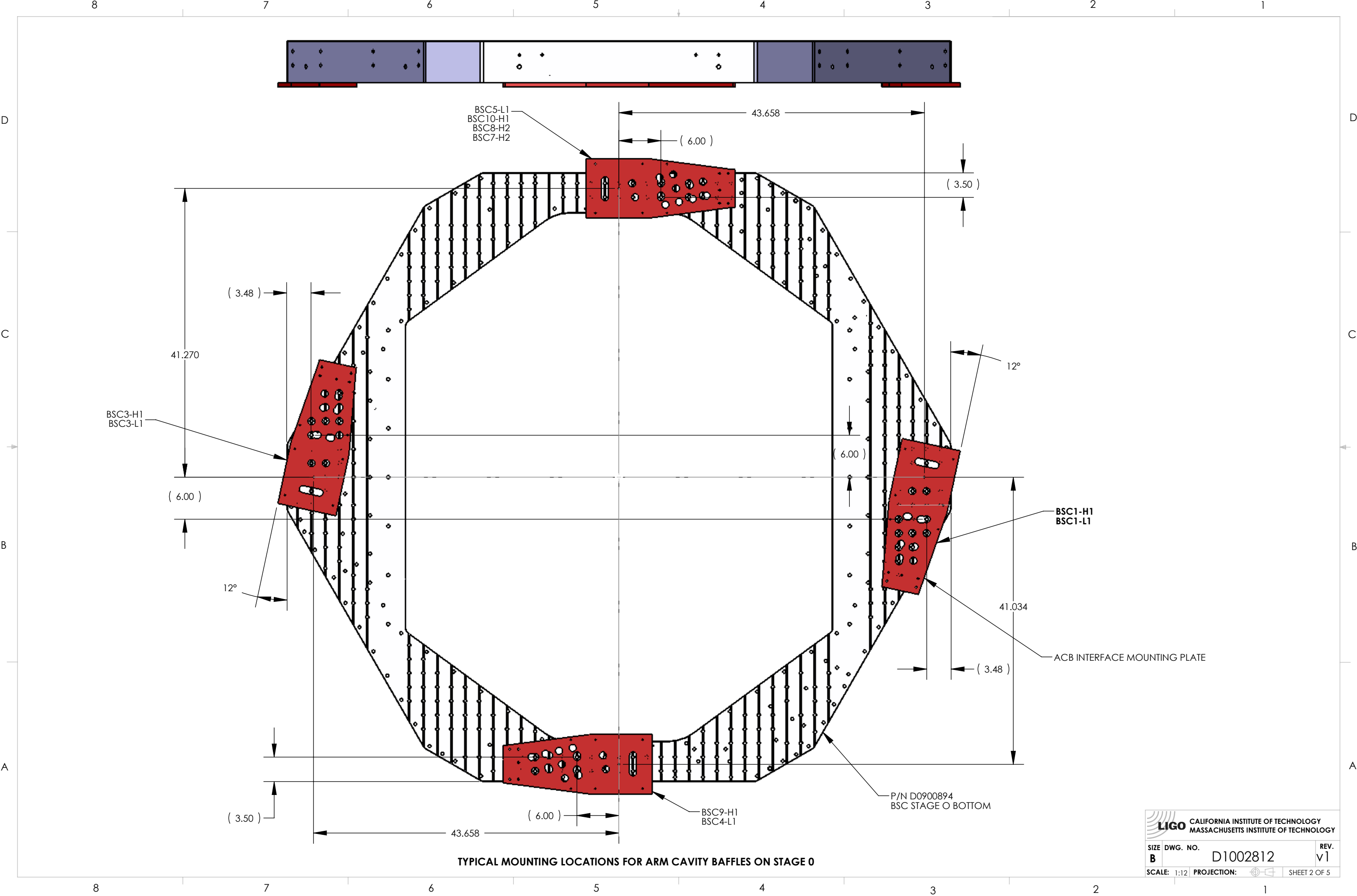
DESIGNER N.Nguyen 06 DEC 2011 SIZE DWG. NO. B D1002812 REV. v1
 DRAFTER N. Nguyen 05 Dec 2011
 CHECKER M. Smith 10 Dec 2011
 APPROVAL D.Coyne 15 Dec 2011

SCALE: 1:12 PROJECTION: SHEET 1 OF 5

8 7 6 5 4 3 2 1

D1002812_AdlIGO_AOS_SLC_ACB Interface Mounting Locations, PART PDM REV: X-019, DRAWING PDM REV: X-013

D1002812_AdLIGO_AOS_SLC_ACB Interface Mounting Locations, PART PDM REV: X-019, DRAWING PDM REV: X-013

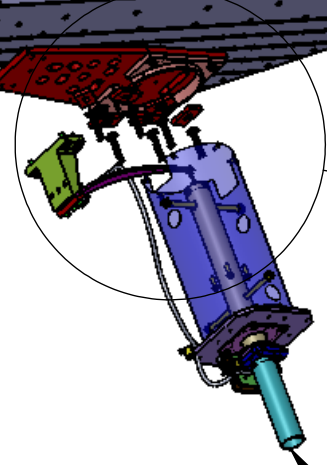
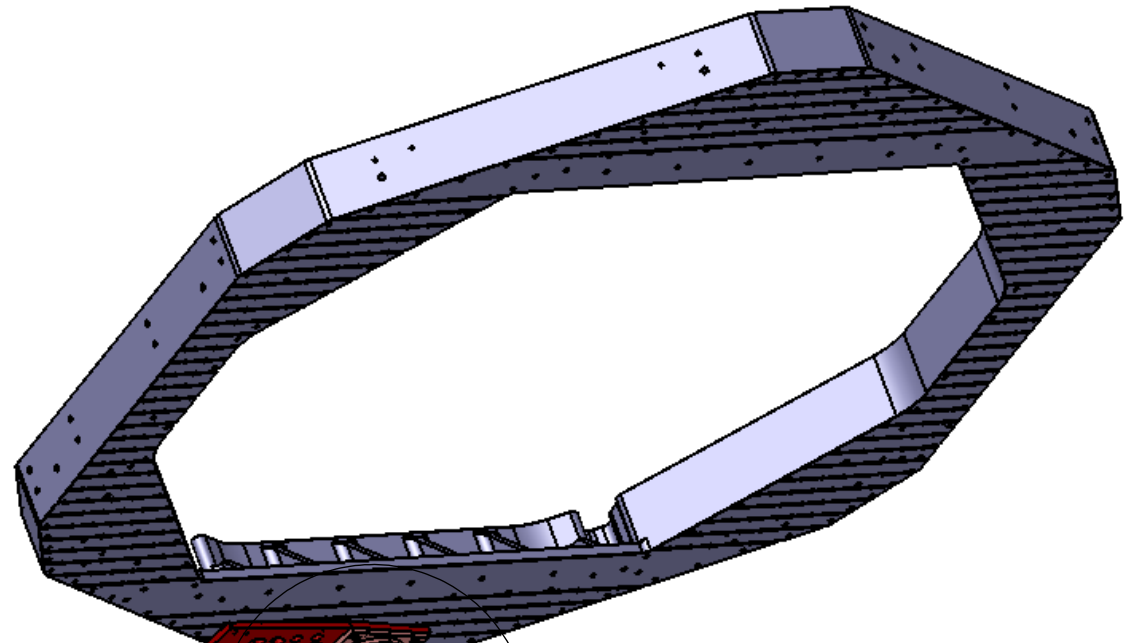


TYPICAL MOUNTING LOCATIONS FOR ARM CAVITY BAFFLES ON STAGE 0

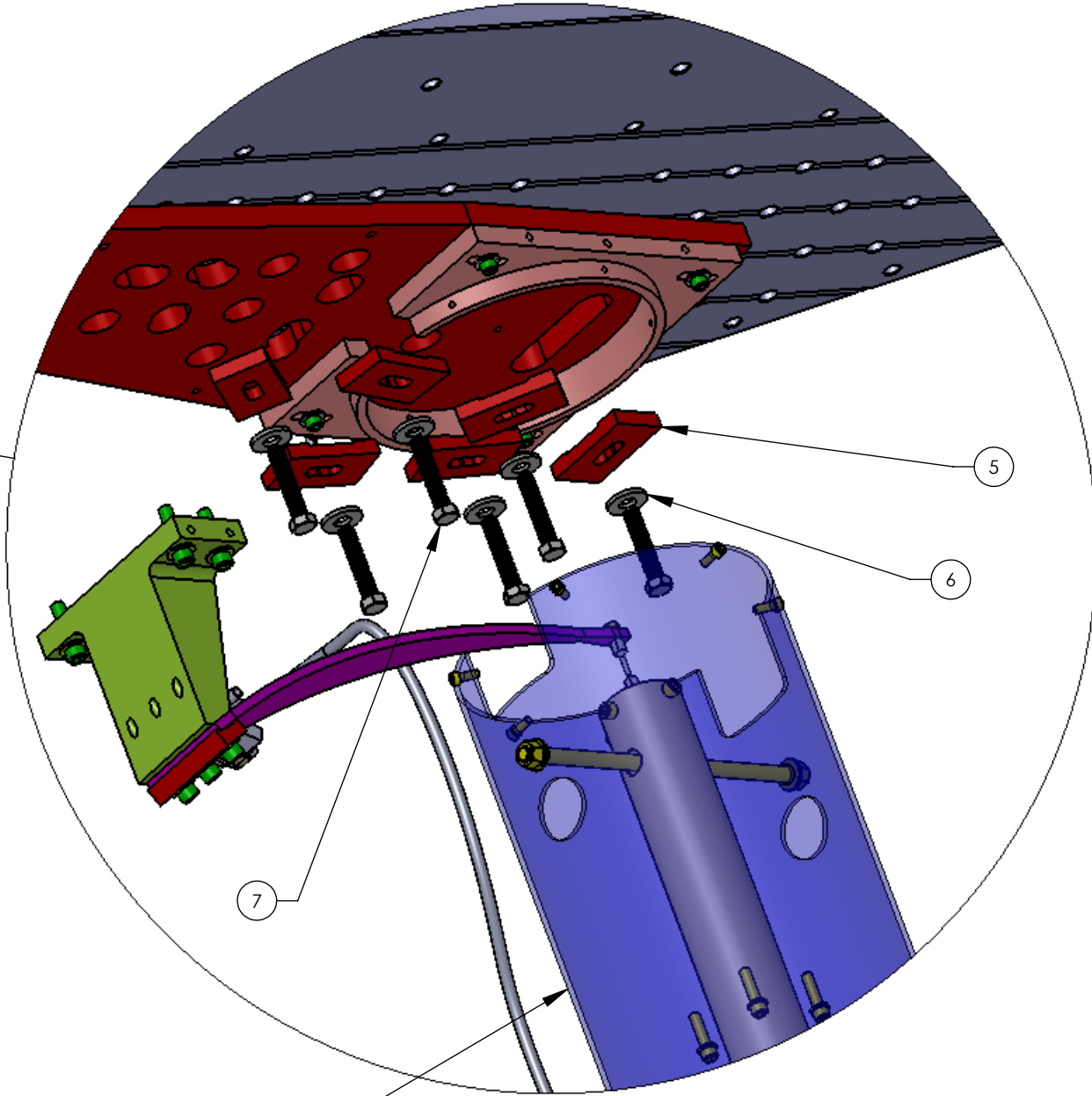
LIGO CALIFORNIA INSTITUTE OF TECHNOLOGY
 MASSACHUSETTS INSTITUTE OF TECHNOLOGY

| | | |
|-------------------------|----------|--------------|
| SIZE | DWG. NO. | REV. |
| B | D1002812 | v1 |
| SCALE: 1:12 PROJECTION: | | SHEET 2 OF 5 |

D1002812_AdLIGO_AOS_SLC_ACB Interface Mounting Locations, PART PDM REV: X-019, DRAWING PDM REV: X-013




(TOP PORTION OF HINGE SHOULD REMAIN ON)



(SHOULD BE UNFASTENED TO ADD ITEMS 5, 6 & 7)

DETAIL A
SCALE 1 : 4

| | |
|---|--------------|
|  CALIFORNIA INSTITUTE OF TECHNOLOGY MASSACHUSETTS INSTITUTE OF TECHNOLOGY | |
| SIZE DWG. NO. B D1002812 | REV. v1 |
| SCALE: 1:12 PROJECTION:  | SHEET 3 OF 5 |

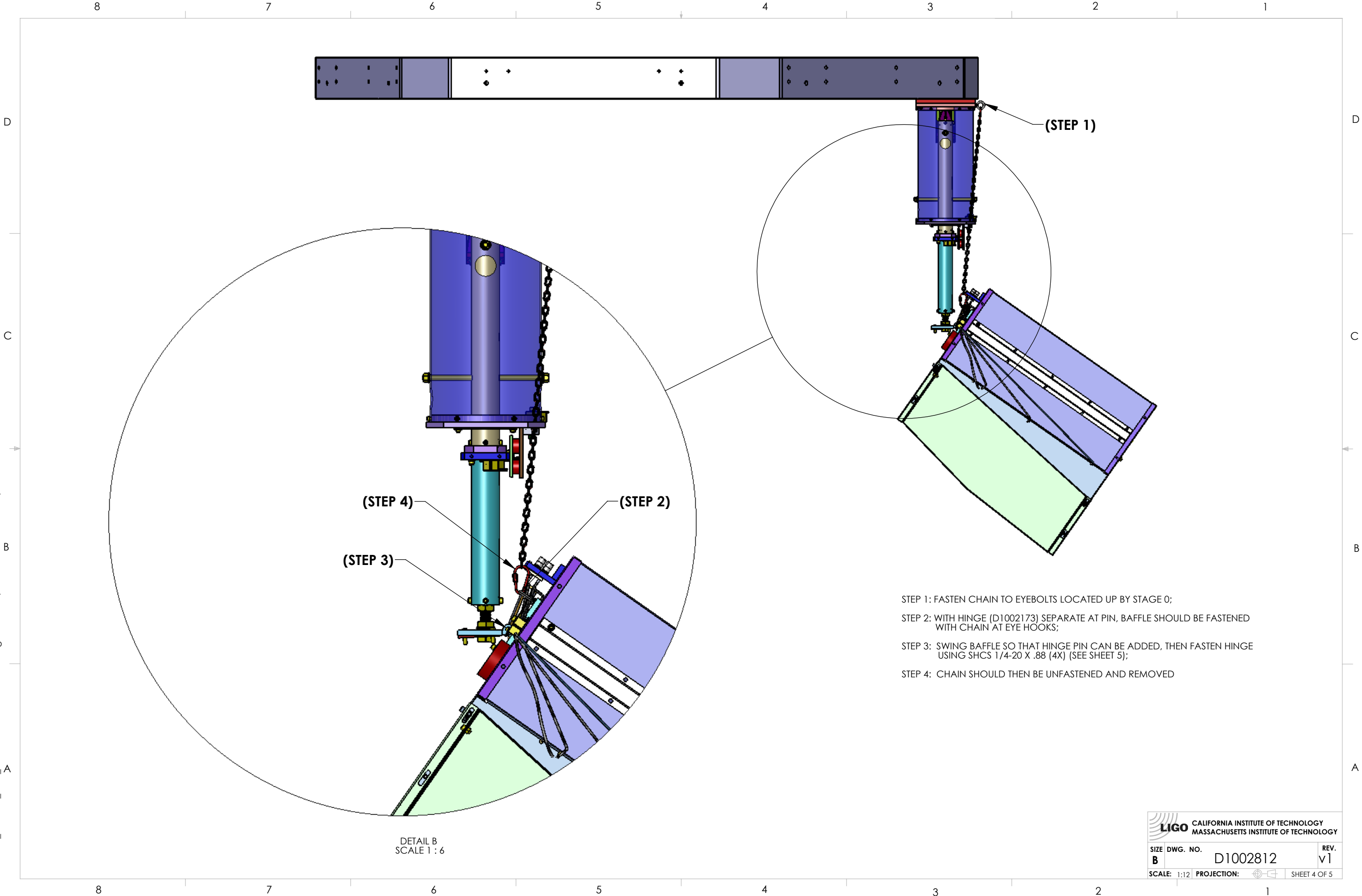
8 7 6 5 4 3 2 1

D
C
B
A

D
C
B
A

8 7 6 5 4 3 2 1

D1002812_AdLIGO_AOS_SLC_ACB Interface Mounting Locations, PART PDM REV: X-019, DRAWING PDM REV: X-013



(STEP 4)



(STEP 2)

(STEP 3)

(STEP 1)

- STEP 1: FASTEN CHAIN TO EYEBOLTS LOCATED UP BY STAGE 0;
- STEP 2: WITH HINGE (D1002173) SEPARATE AT PIN, BAFFLE SHOULD BE FASTENED WITH CHAIN AT EYE HOOKS;
- STEP 3: SWING BAFFLE SO THAT HINGE PIN CAN BE ADDED, THEN FASTEN HINGE USING SHCS 1/4-20 X .88 (4X) (SEE SHEET 5);
- STEP 4: CHAIN SHOULD THEN BE UNFASTENED AND REMOVED

DETAIL B
SCALE 1 : 6

| | |
|---|--|
|  CALIFORNIA INSTITUTE OF TECHNOLOGY MASSACHUSETTS INSTITUTE OF TECHNOLOGY | |
| SIZE B | DWG. NO. D1002812 |
| SCALE: 1:12 | PROJECTION:  SHEET 4 OF 5 |
| REV. v1 | |

D1002812_AdLIGO_AOS_SLC_ACB Interface Mounting Locations, PART PDM REV: X-019, DRAWING PDM REV: X-013

8 7 6 5 4 3 2 1

D

C

B

A

D

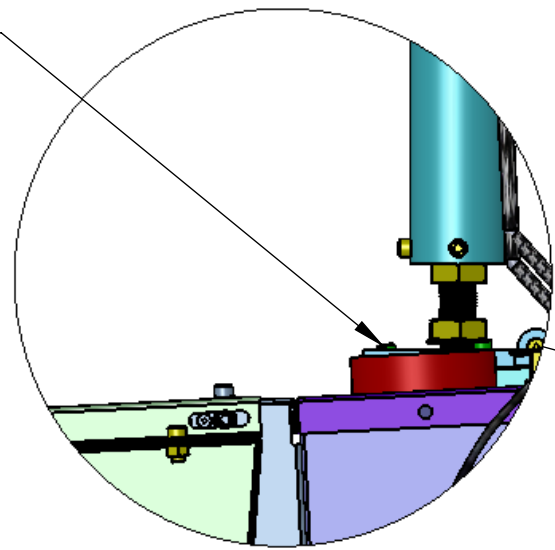
C

B

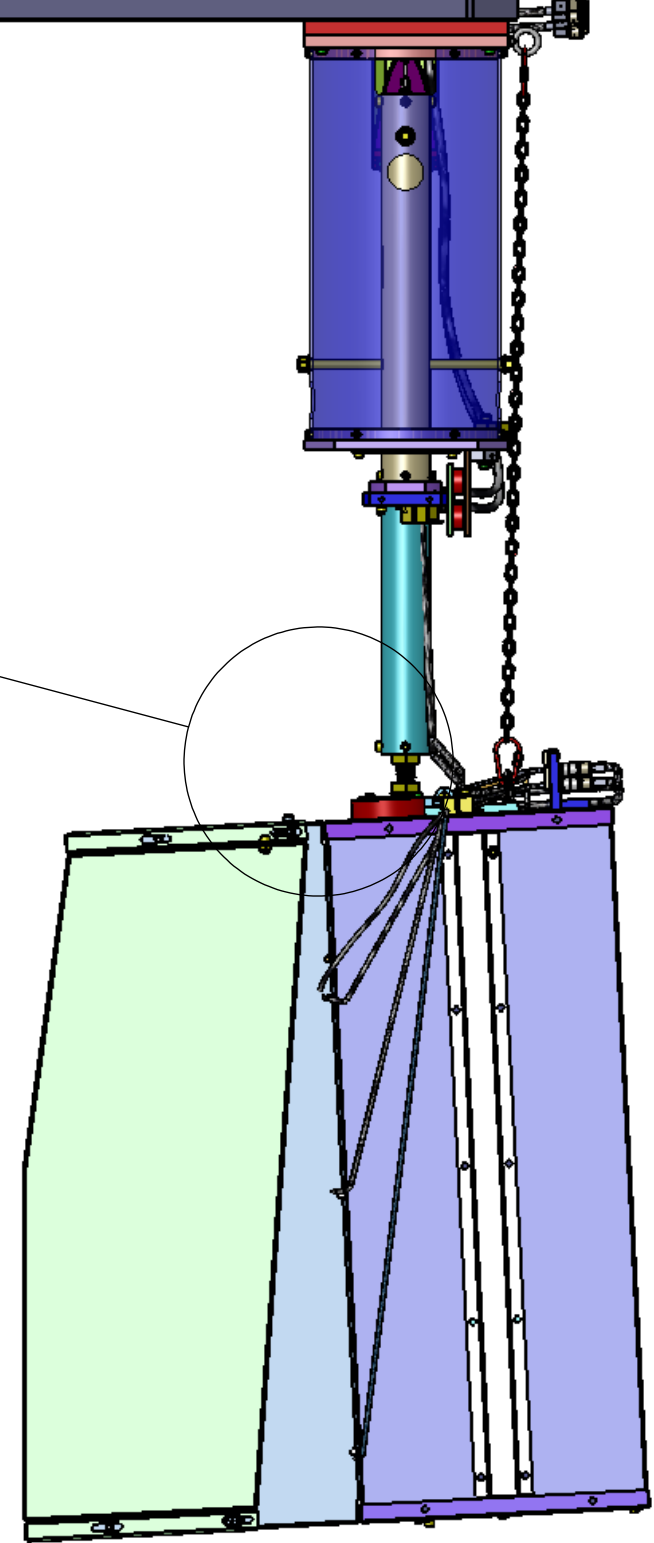
A



(WITH CHAINS REMOVED FASTEN HINGE IN PLACE, USING 4X SHCS1/4-20 X .88)



DETAIL C
SCALE 1 : 4



LIGO CALIFORNIA INSTITUTE OF TECHNOLOGY
MASSACHUSETTS INSTITUTE OF TECHNOLOGY

| | | |
|-------------|----------|--------------|
| SIZE | DWG. NO. | REV. |
| B | D1002812 | v1 |
| SCALE: 1:32 | | PROJECTION: |
| | | SHEET 5 OF 5 |

8 7 6 5 4 3 2 1