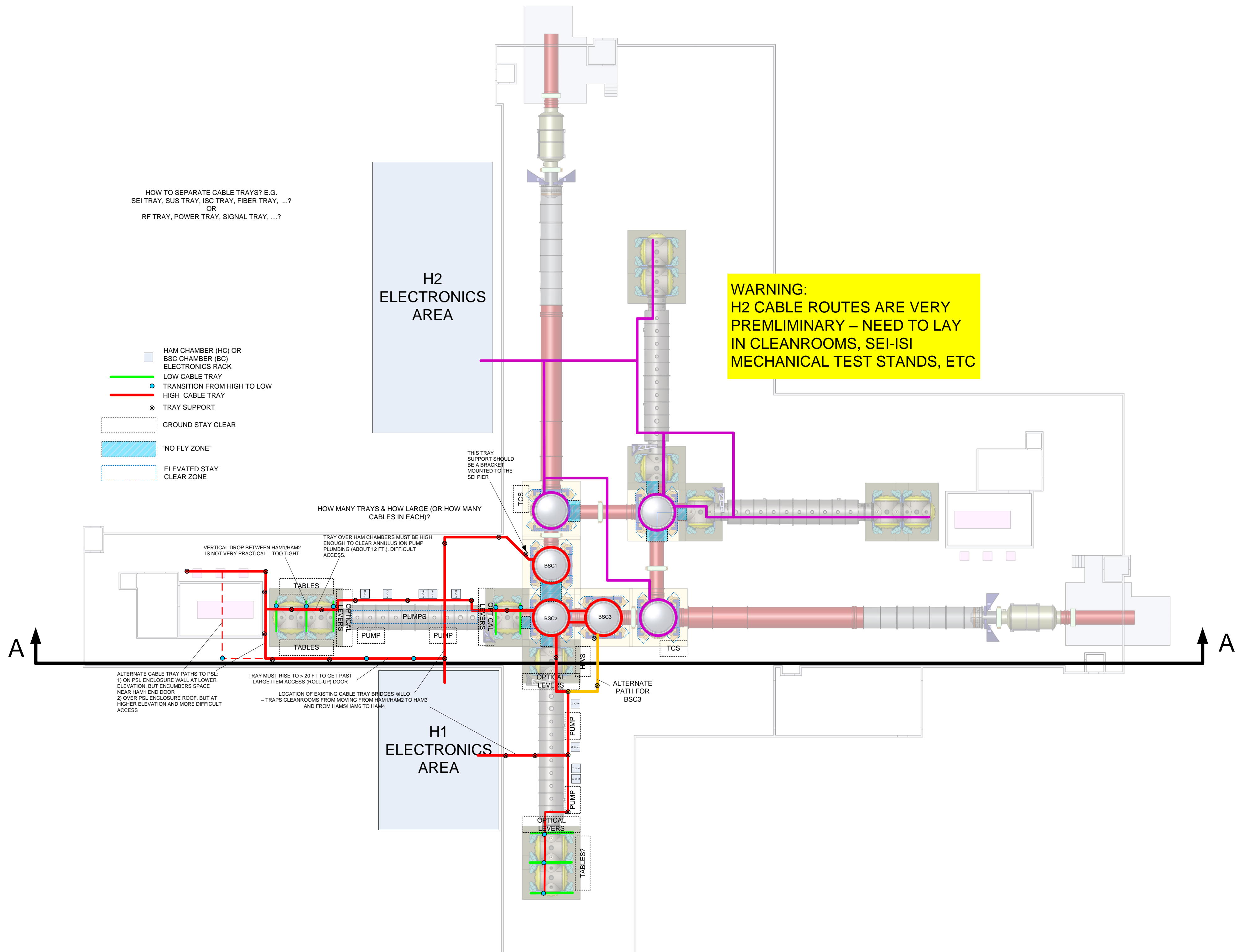


HOW TO SEPARATE CABLE TRAYS? E.G.  
SEI TRAY, SUS TRAY, ISC TRAY, FIBER TRAY, ...?  
OR  
RF TRAY, POWER TRAY, SIGNAL TRAY, ...?

- HAM CHAMBER (HC) OR BSC CHAMBER (BC) ELECTRONICS RACK
- LOW CABLE TRAY
- TRANSITION FROM HIGH TO LOW
- HIGH CABLE TRAY
- TRAY SUPPORT
- GROUND STAY CLEAR
- "NO FLY ZONE"
- ELEVATED STAY CLEAR ZONE

H2  
ELECTRONICS  
AREA

**WARNING:**  
H2 CABLE ROUTES ARE VERY  
PRELIMINARY – NEED TO LAY  
IN CLEANROOMS, SEI-ISI  
MECHANICAL TEST STANDS, ETC



HOW MANY TRAYS & HOW LARGE (OR HOW MANY CABLES IN EACH)?

VERTICAL DROP BETWEEN HAM1/HAM2 IS NOT VERY PRACTICAL – TOO TIGHT

TRAY OVER HAM CHAMBERS MUST BE HIGH ENOUGH TO CLEAR ANNULUS ION PUMP PLUMBING (ABOUT 12 FT.). DIFFICULT ACCESS.

THIS TRAY SUPPORT SHOULD BE A BRACKET MOUNTED TO THE SEI PIER

ALTERNATE CABLE TRAY PATHS TO PSL:  
1) ON PSL ENCLOSURE WALL AT LOWER ELEVATION, BUT ENCUMBERS SPACE NEAR HAM1 END DOOR  
2) OVER PSL ENCLOSURE ROOF, BUT AT HIGHER ELEVATION AND MORE DIFFICULT ACCESS

TRAY MUST RISE TO > 20 FT TO GET PAST LARGE ITEM ACCESS (ROLL-UP) DOOR

LOCATION OF EXISTING CABLE TRAY BRIDGES @LLO – TRAPS CLEANROOMS FROM MOVING FROM HAM1/HAM2 TO HAM3 AND FROM HAM5/HAM6 TO HAM4

ALTERNATE PATH FOR BSC3

H1  
ELECTRONICS  
AREA

A

A

DO WE PROVIDE CABLE TRAYS THAT RING AROUND THE BSC CHAMBERS?  
OR  
JUST PASS BY (LIKE RAILS) ON EITHER SIDE OF THE CHAMBER?

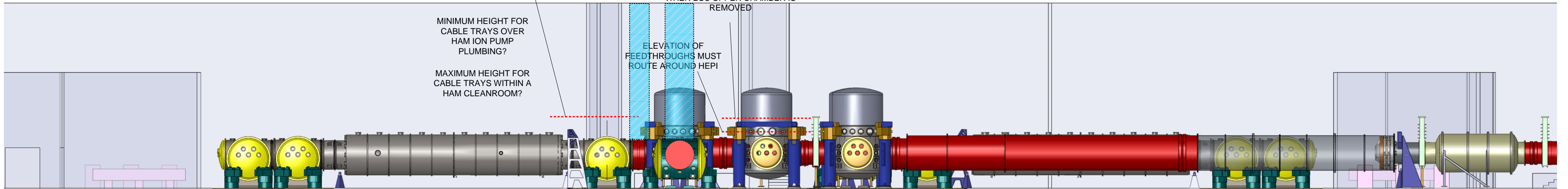
MINIMUM HEIGHT FOR  
CABLE TRAYS OVER A  
HAM DOOR

MINIMUM HEIGHT FOR  
CABLE TRAYS OVER  
HAM ION PUMP  
PLUMBING?

MAXIMUM HEIGHT FOR  
CABLE TRAYS WITHIN A  
HAM CLEANROOM?

ELEVATION ABOVE CROSSBEAM  
INTERFERES WITH ACCESS TO ISI  
WHEN BSC UPPER CHAMBER IS  
REMOVED

ELEVATION OF  
FEEDTHROUGHS MUST  
ROUTE AROUND HEPI



## SECTION A-A

LIFT SPLIT (TWO-PIECE) SPOOLS AT TOP CENTER,  
REMOVE SPOOLS Laterally (HORIZONTALLY),  
THEN UP  
[NEEDED FOR PRC & SRC INITIAL ALIGNMENT]

SPOOL BETWEEN BSC1 AND  
BSC2 CAN ONLY BE REMOVED  
BY LIFTING VERTICALLY  
[NEEDED FOR BS OPTIC INITIAL  
ALIGNMENT]

THE SPOOL BETWEEN BSC3 AND  
BSC2 IS NOT REMOVABLE  
(LOCKED IN BY BSC2  
CROSSBEAM AND SEI PIERS)

